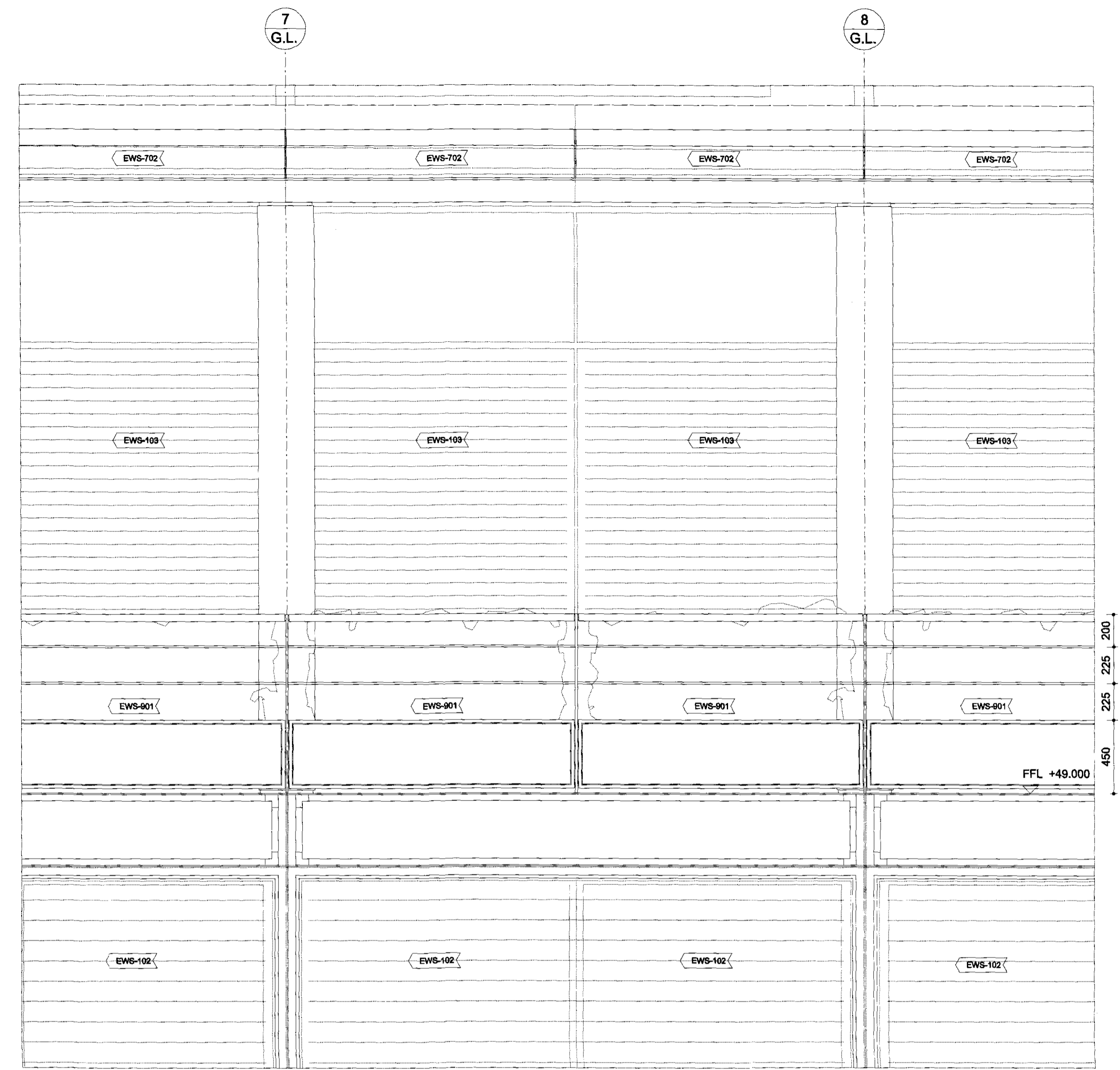
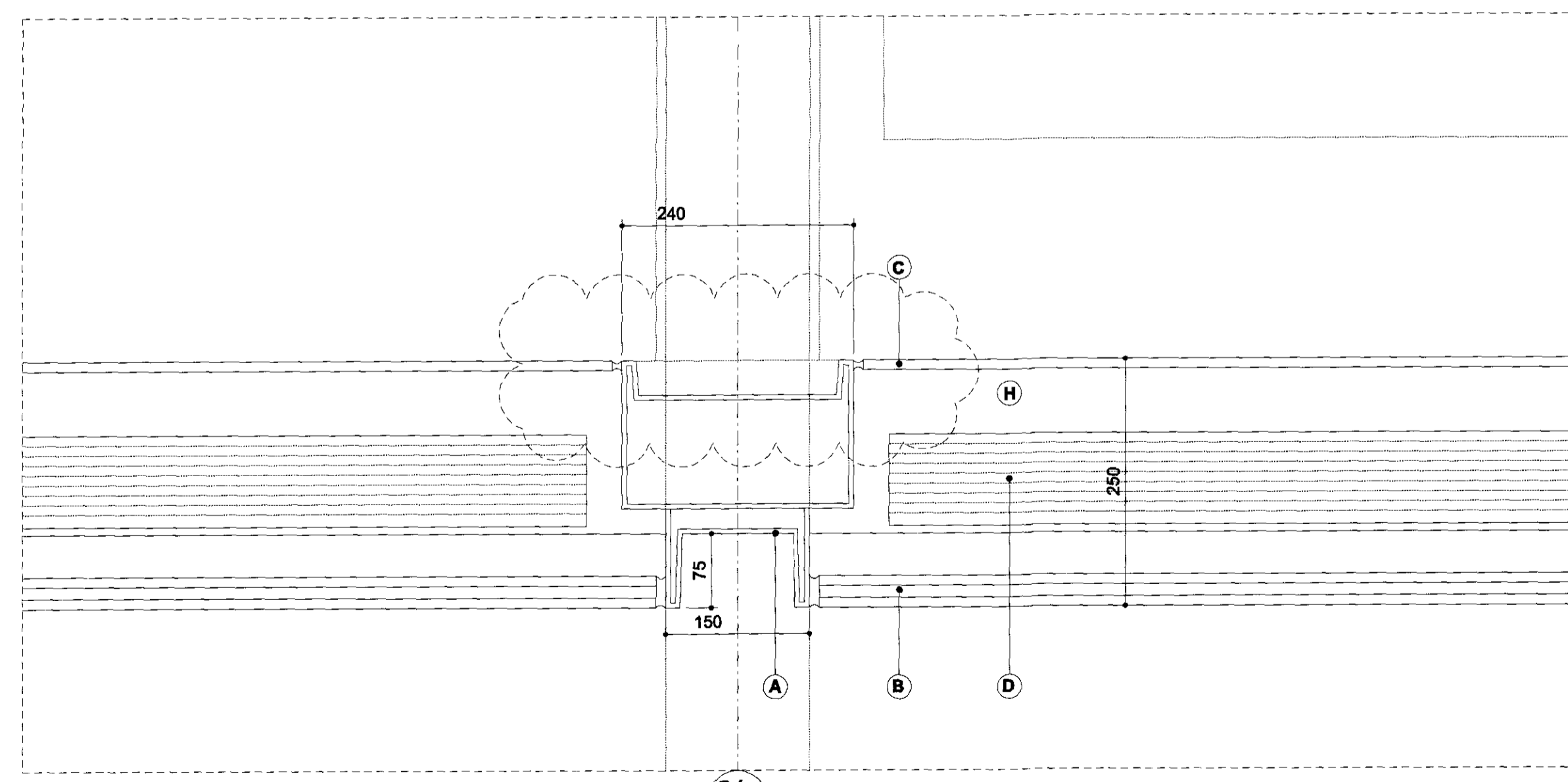


D01: Partial Section

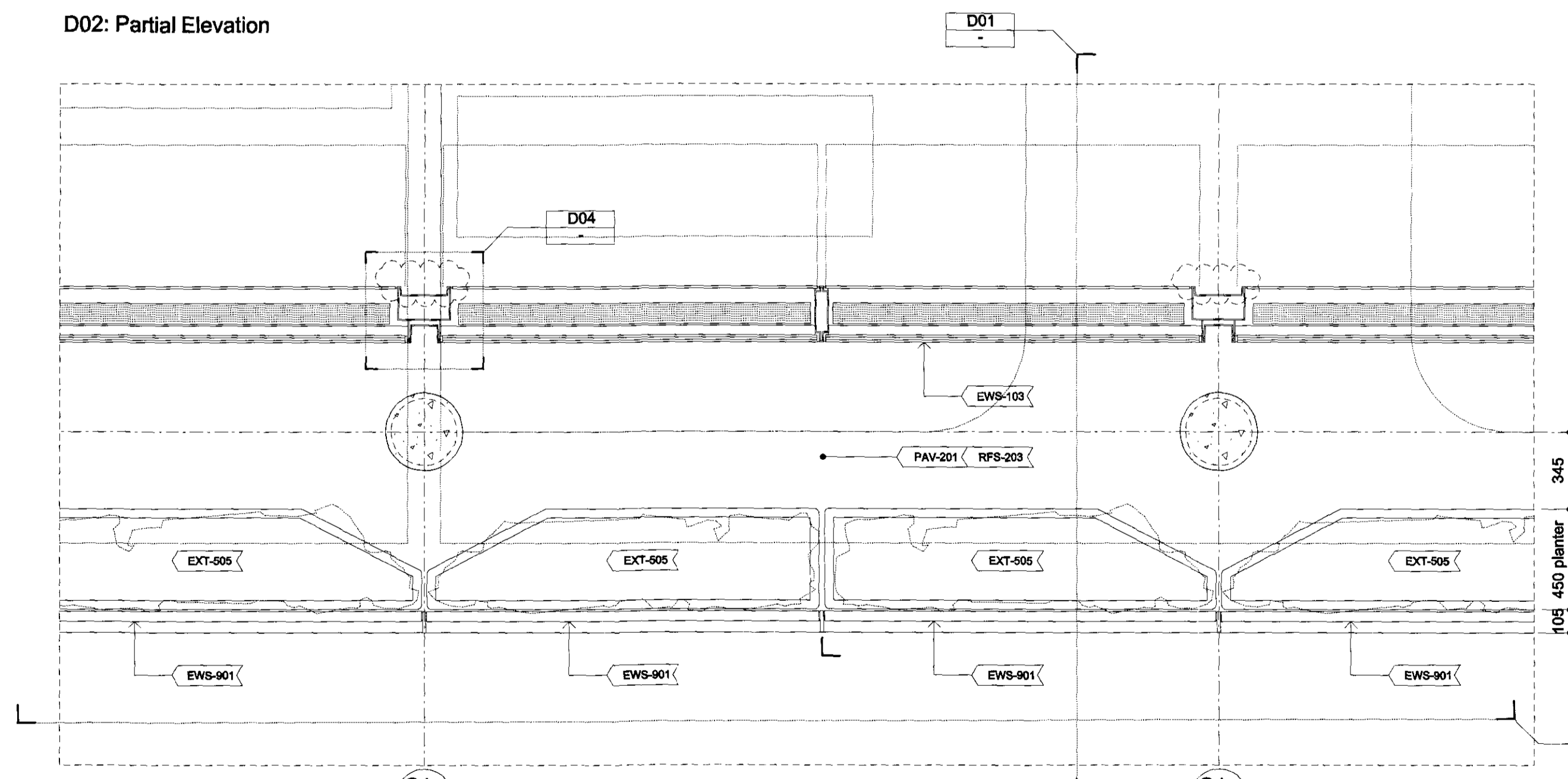
Detail 03 removed: bronze column cladding omitted



D02: Partial Elevation



D04: Detail. Scale 1:5



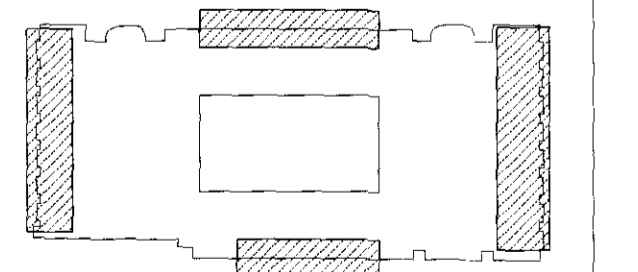
D05: Partial Plan

- General Notes:**
- G1 For Site and Grid setting out refer to A/UCLHAA/3000
 - G2 All dimensions to be checked on site
 - G3 Any discrepancies between drawings to be reported to the Architect immediately.
 - G4 All Levels are above Ordnance Datum (AOD)
 - New Levels are shown thus: EX-20.345
 - Existing Levels are shown thus: EX-20.345
 - Retained Existing Levels: EX-20.345
 - G5 Use figured dimensions only. Do not scale from drawings. IF IN DOUBT, ASK.
 - G6 Refer to Structural Engineers drawings for all structural and services information.
 - G7 For tolerances see the Design Drawings and Specifications
 - G8 For elements of work subject to Contractor's Design, this drawing is indicative of the visual & performance requirements only. The Contractor is responsible for the detailed design and co-ordination of the installation within the parameters defined in the specification, design drawings, contract terms and contract documents.
 - G9 Room numbers are shown thus:
 - 115
 - G10 Door (D) & Window (W) References are shown thus:
 - 115
 - G11 Clear height is shown thus (finished floor to finished soffit)
 - 2750
 - G12 T Sheet Reference shown thus:
 - MS-01
 - G13 Finishes are shown thus:
 - 115
 - G14 Setting Out Points shown thus:
 - SOP
 - G15 Refer to A/UCLHAA/9100 for T Sheet references, and to A/UCLHAA/9110 to 9167 for Architectural Specifications.

Notes

- A Bronze Mullion Extrusion
- B Clear double glazed outer leaf, structural sillon sealed into (A)
- C Flush, pop out horizontal sliding or top hung internal or single glazed units to allow for cavity and blind cleaning and maintenance.
- D Venetian blinds: Interstitial automatic motorized aluminium PPC perforated louvres, raisable and tiltable connected to BMS for remote re-set. Only raisable for maintenance. To provide visual privacy when tilted at day and night.
- E Bronze Transom Extrusion
- H Roller Blind for:
 - a) Visual Privacy if Venetian Blind is not provided
 - b) where required for Room Data sheet

Materials



EWS-103

Work Package	Cost Check	Info/Briefing	Tender	Contract	Construction

Date	Ref.	Revision
18.01.09	A	Issued as Draft under Memo 0264.
30.01.09	B	Issued as Draft under Memo 0296.
06.02.09	C	Issued as Stage D final draft information under Memo 303.
06.03.09	D	Issued as Final Stage D issue under Memo 0357.
20.03.09	E	Memo 391. UCLH Phase 3 Redevelopment for Cancer Services: Tender Issue.
20.03.09	F	In Progress facade package issued to ECH under Memo 0394.
23.04.09	G	Memo 0420. UCLH Phase 3 Redevelopment for Cancer Services: Tender Addendum
05.05.09	H	Memo 0490. UCLH Phase 3 Redevelopment for Cancer Services: Issued for ITT.
11.09.09	J	Memo 0700. UCLH Phase 3 Redevelopment for Cancer Services: Issued for PS2 Facade.

Date	Ref.	Revision
09.10.09	J	Memo 0868. UCLH Phase 3 Redevelopment for Cancer Services: Issue for T1 Solid Roofs
30.10.09	K	Memo 0896. IN043 PS2 External Handrails and Planters
05.03.10	L	T1 External Envelope Package under Memo 1094
08.03.10	L	Issued for Discharge of Planning Conditions under Memo 1405.

Project	UCLH4A - Phase 3 Cancer Centre
Subject	EWS-103 / EWS-410 Typical 5th floor facade type with solid spandrel panels
Architects	Hopkins Architects Ltd 27 Broadway Terrace, London, NW1 6LG T: 020 7724 1751 E: mail@hopkins.co.uk

Sort Code	Drawing Number	Rev.
A / UCLH4A	5004	L
Date	16.01.09	Scale 1:20 at A1