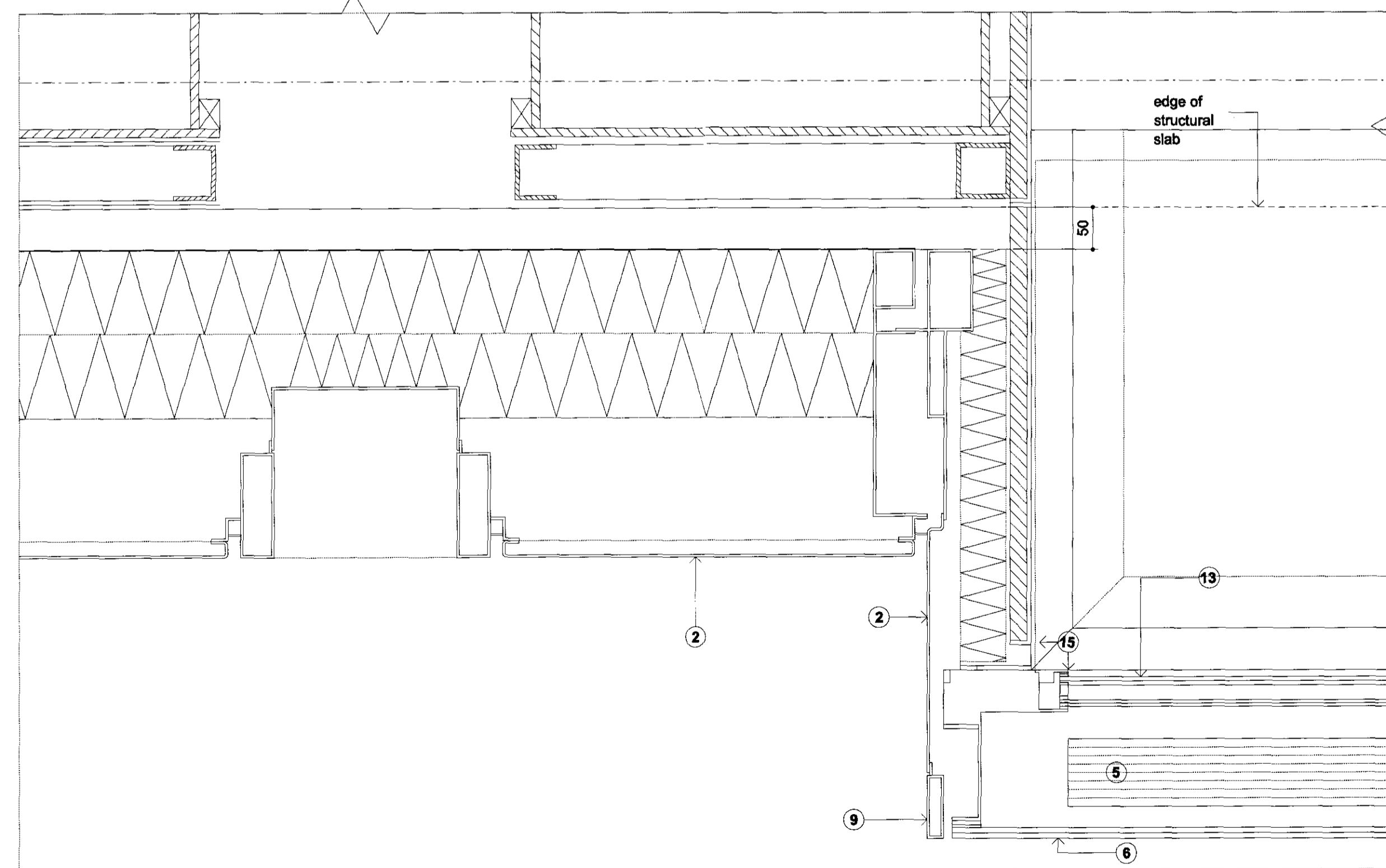
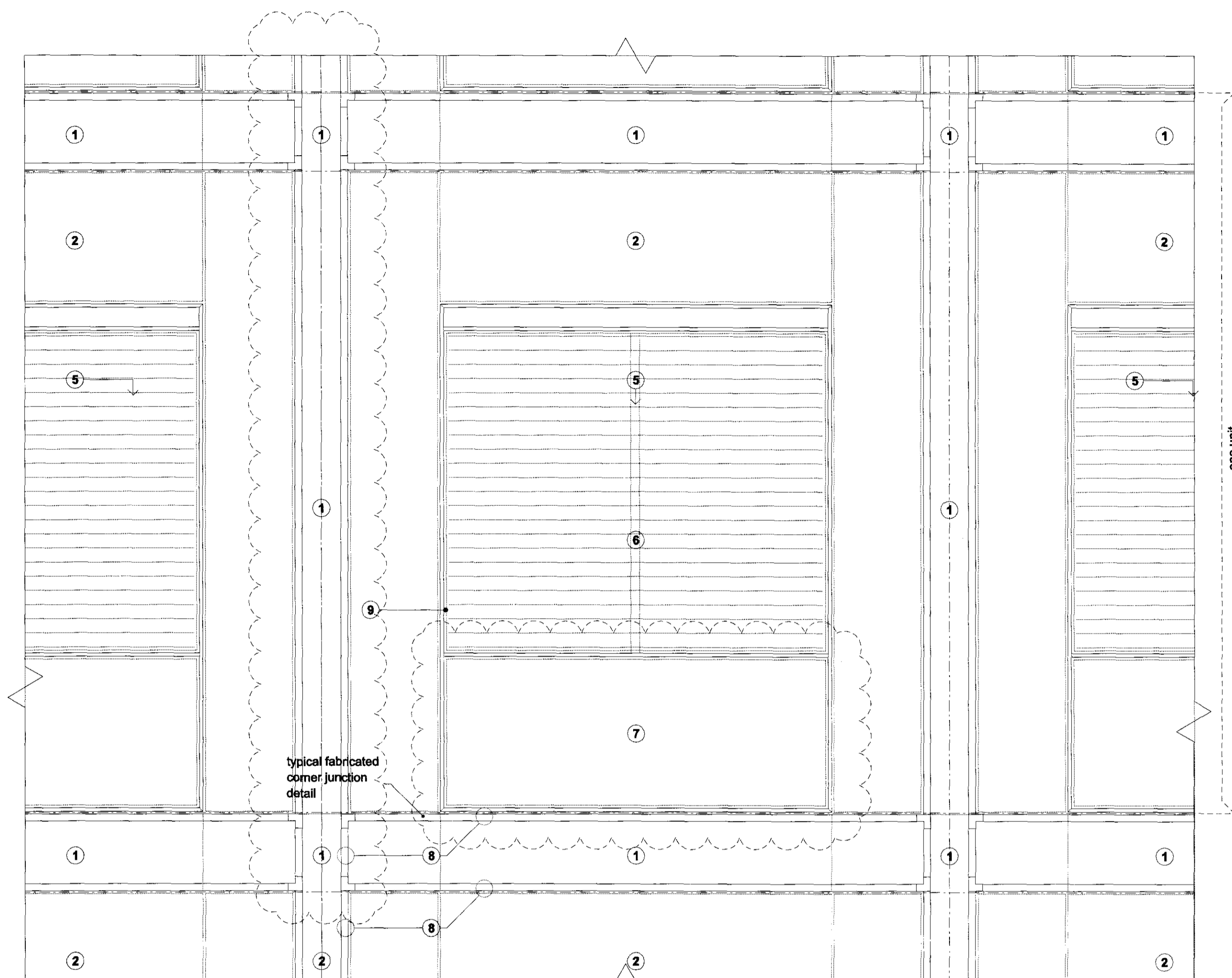


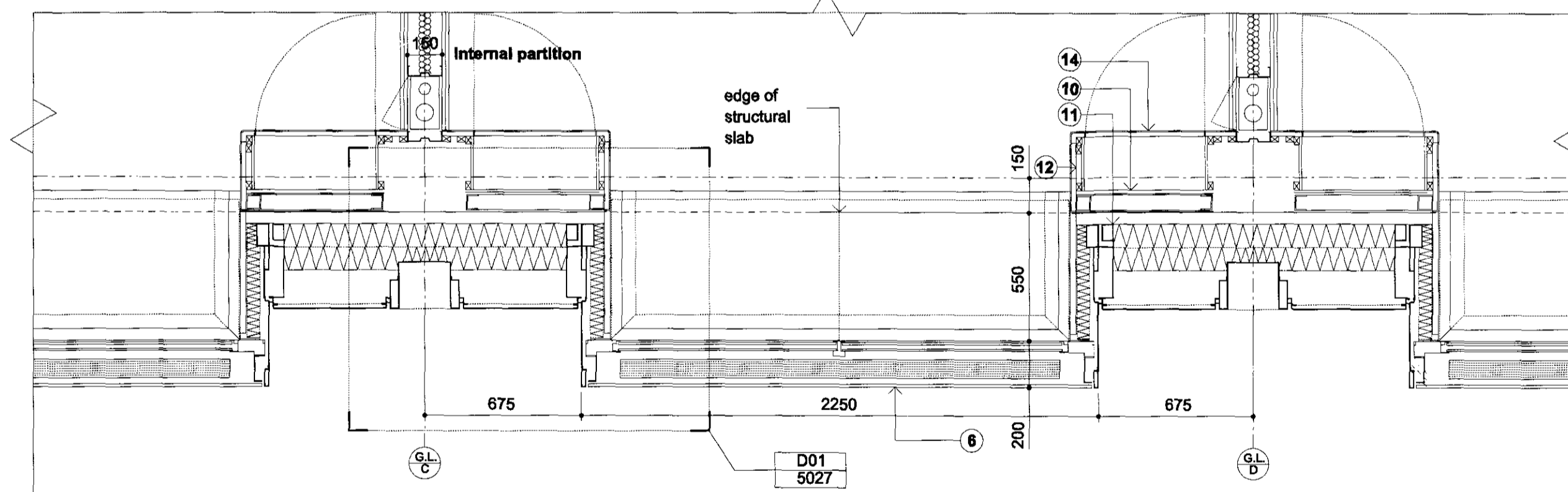
Cross Section



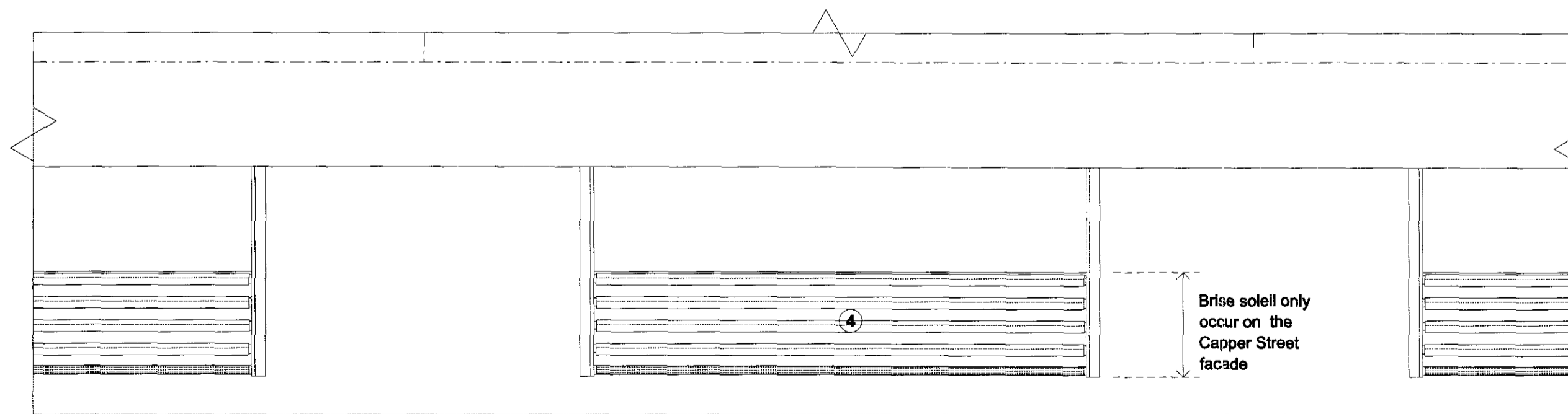
Detail 01. Scale 1:5



Elevation



Plan



Roof plan

- General Notes:
- G1 For Site and Grid setting out refer to AUCLH4A/3000
 - G2 All dimensions to be checked on site
 - G3 Any discrepancies between drawings to be reported to the Architect immediately.
 - G4 All Levels are above Ordnance datum (AOD)
 - New Levels are shown thus: ± 20.345
 - Existing Levels are shown thus: $EX \pm 20.345$
 - Retained Existing Levels: $EX \pm 20.345$
 - G5 Use figured dimensions only. Do not scale from drawings. IF IN DOUBT, ASK.
 - G6 Refer to Structural Engineers drawings for all structural and services information.
 - G7 For tolerances see the Design Drawings and Specifications
 - G8 For elements of work subject to Contractor's Design, this drawing is indicative of the visual & performance requirements only. The Contractor is responsible for the detailed design and co-ordination of the installation within the parameters defined in the specification, design drawings, contract terms and contract documents.
 - G9 Room numbers are shown thus: $\text{R}15$
 - G10 Door(D) & Window (W) References are shown thus: $\text{D}1$, $\text{W}2$
 - G11 Clear height is shown thus (finished floor to finished soffit)
 - G12 T Sheet Reference shown thus: $\text{MS}21$
 - G13 Finishes are shown thus: SOP
 - G14 Setting Out Points shown thus: SOP
 - G15 Refer to AUCLH4A/100 for T Sheet references, and to AUCLH4A/9110 to 9167 for Architectural Specifications.

- Notes
- 1 Bronze channel formed with extrusion mullions & folded sheets
 - 2 Bronze panel formed with folded sheet
 - 3 Bronze head to bay window
 - 4 Bronze brise soleil
 - 5 Venetian blinds: Interstitial automatic motorised aluminium ppc perforated louver, raisable and tiltable connected to BMS for remote re-set. Only raisable for maintenance. To provide visual privacy when tilted at day and night
 - 6 Fixed clear single glazed unit secured with concealed undercut fixing to inner pane
 - 7 Bronze panel insulated base to bay window
 - 8 Bronze extrusion fin
 - 9 Bronze extrusion window frame
 - 10 Lightweight stud wall spanning from floor to floor to take 11, 12 and facade system
 - 11 Composite insulated cladding system
 - 12 Lining to room
 - 13 Openable Double glazed glass pane for access for cleaning and maintenance of blinds and cavity
 - 14 Storage / shelving
 - 15 Aluminum window cill

Materials

- See Materials notes on AUCLH4A/1554.

Typical Bay Planning

Work Package	Cost Check	Info/Briefing	Tender	Contract	Construction

Date	Ref.	Revision
30.09.08	A	Issued for information under Memo 096.
30.10.08	B	Issued for information under Memo 190.
12.11.08	C	Issued for information under Memo 195.
17.11.08	D	Issued under Memo 196 for phase 3.2 TTPD.
21.11.08	E	Issued for Planning Application under Memo 202.
05.12.08	F	Issued for Planning Application under Memo 211.
12.12.08	G	Issued for Planning Application under Memo 218.
17.04.09	H	Issued for Planning Application to UCLH under Memo 441.
28.02.10	J	Issued for internal review under Memo 1378.

Date	Ref.	Revision
08.03.10	K	Issued for Discharge of Planning Conditions under Memo 1406.

Project	UCLH4A - Phase 3 Cancer Centre
Subject	Typical Bay North and South Elevation
Architects	Hopkins Architects Ltd 27 Broadway Terrace, London, NW1 6LG T: 020 7724 1751 E: mail@hopkins.co.uk

Sort Code	Drawing Number	Rev.
A / UCLH4A	1555	K
Date	12.12.08	Scale 1:20 at A1