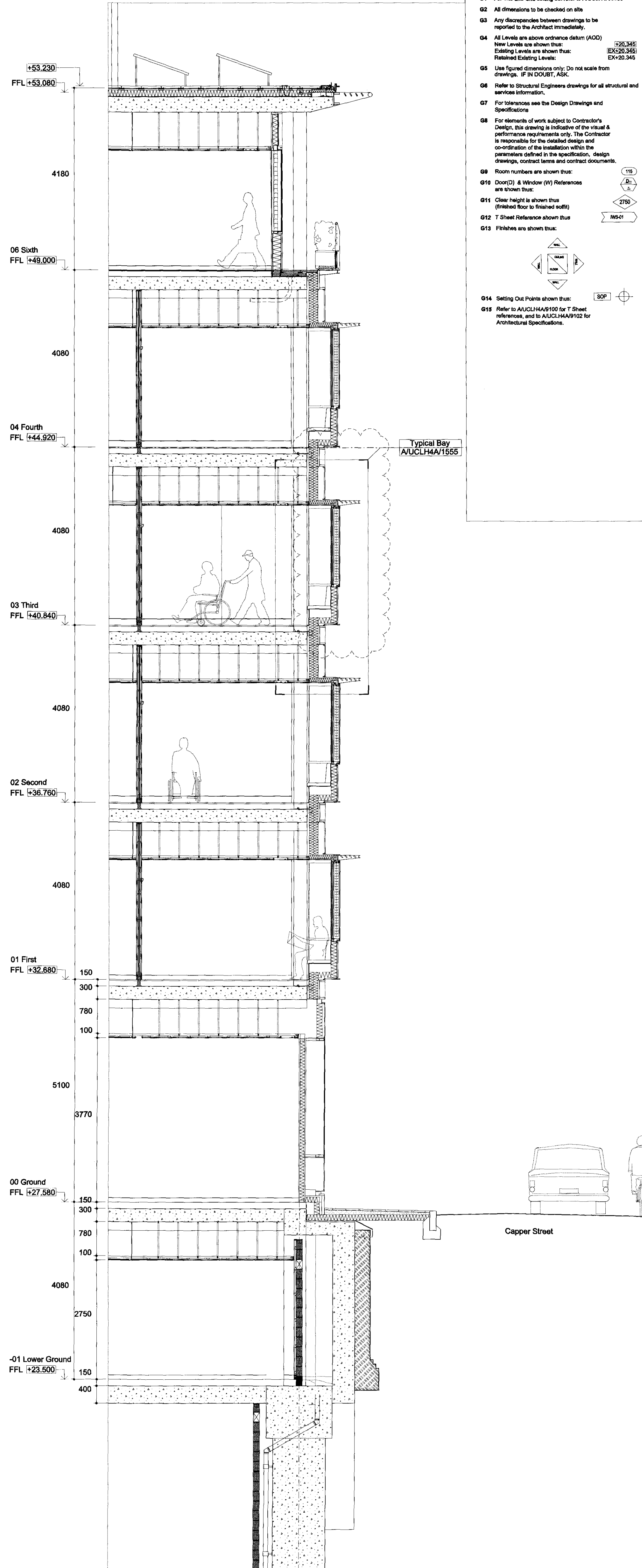


North and South Elevation



Section

- General Notes:**
- G1 For Site and Grid setting out refer to A/UCLH4A/000
 - G2 All dimensions to be checked on site
 - G3 Any discrepancies between drawings to be reported to the Architect immediately.
 - G4 All Levels are above Ordnance datum (AOD)
 - New Levels are shown thus: ∇ 20.345
 - Existing Levels are shown thus: ∇ EX-20.345
 - Retained Existing Levels: ∇ EX-20.345
 - G5 Use figured dimensions only. Do not scale from drawings. IF IN DOUBT, ASK.
 - G6 Refer to Structural Engineers drawings for all structural and services information.
 - G7 For tolerances see the Design Drawings and Specifications
 - G8 For elements of work subject to Contractor's Design, this drawing is indicative of the visual & performance requirements only. The Contractor is responsible for the detailed design and co-ordination of the installation within the parameters defined in the specification, design drawings, contract terms and contract documents.
 - G9 Room numbers are shown thus: 115
 - G10 Door (D) & Window (W) References are shown thus: D-5
 - G11 Clear height is shown thus (finished floor to finished soffit) 2750
 - G12 T Sheet Reference shown thus MS-1
 - G13 Finishes are shown thus: MS-1
 - G14 Setting Out Points shown thus: SOP
 - G15 Refer to A/UCLH4A/010 for T Sheet references, and to A/UCLH4A/012 for Architectural Specifications.

**Typical Bay
Planning**

1553	Work Package	Cost Check	Info/Briefing	Tender	Contract	Construction	Date	Ref.	Revision	Project	Sort Code	Drawing Number	Rev.	
								30.10.08	A	Issued for information under Memo 160.	UCLH4A - Phase 3 Cancer Centre	A/UCLH4A	1553	J
							12.11.08	B	Issued for information under Memo 188.	Double Bay				
							17.11.08	C	Issued under Memo 196 for phase 3.2 ITPD.	South Elevation - Capper Street				
							21.11.08	D	Issued for Planning Application under Memo 202.					
							05.12.08	E	Issued for Planning Application under Memo 211.					
							12.12.08	F	Issued for Planning Application under Memo 219.					
							17.04.09	G	Issued for Planning Application to UCLH under Memo 445.					
							26.02.10	H	Issued for Internal review under Memo 1378	Hopkins Architects Ltd 27 Broadley Terrace, London, NW1 6LG T: 020 7724 1751 E: mail@hopkins.co.uk	Date	12.12.08	Scale	1:50 at A1
							08.03.10	J	Issued for Discharge of Planning Conditions under Memo 1405.					