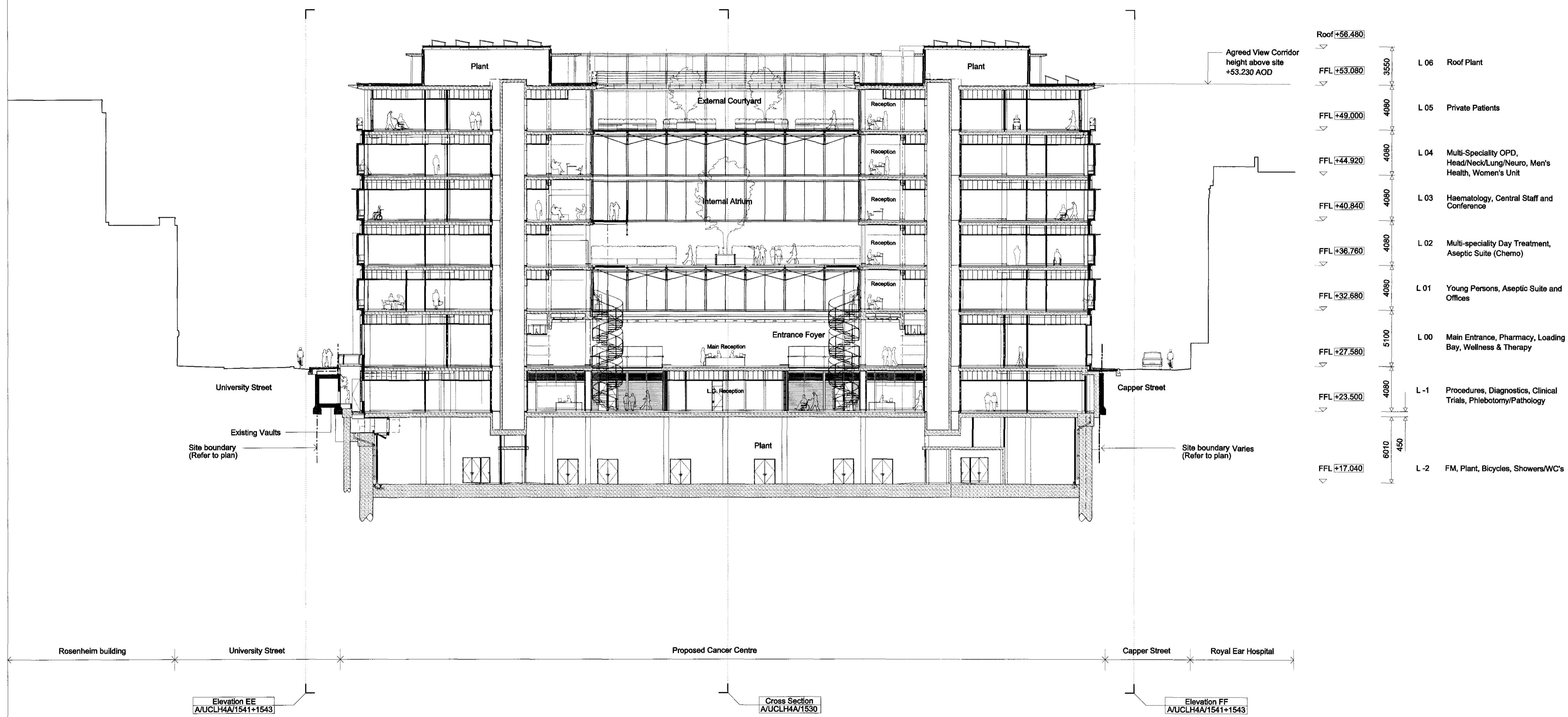


- General Notes:**
- G1 For Site and Grid setting out refer to A/UCLH4A/3000
 - G2 All dimensions to be checked on site
 - G3 Any discrepancies between drawings to be reported to the Architect immediately.
 - G4 All Levels are above Ordnance datum (AOD)
 - Now Levels are shown thus: ∇ +20.345
 - Existing Levels are shown thus: ∇ EX+20.345
 - Retained Existing Levels: ∇ EX+20.345
 - G5 Use figured dimensions only. Do not scale from drawings. IF IN DOUBT, ASK.
 - G6 Refer to Structural Engineers drawings for all structural and services information.
 - G7 For tolerances see the Design Drawings and Specifications
 - G8 For elements of work subject to Contractor's Design, this drawing is indicative of the visual & performance requirements only. The Contractor is responsible for the detailed design and co-ordination of the installation within the parameters defined in the specification, design drawings, contract terms and contract documents.
 - G9 Room numbers are shown thus: 115
 - G10 Door(D) & Window (W) References are shown thus: D1
 - G11 Clear height is shown thus (finished floor to finished soffit) 2750
 - G12 T Sheet Reference shown thus MS-01
 - G13 Finishes are shown thus: SOP
 - G14 Setting Out Points shown thus: SOP
 - G15 Refer to A/UCLH4A/9100 for T Sheet references, and to A/UCLH4A/9110 to 9167 for Architectural Specifications.



Roof	+56.480	3550	L 06	Roof Plant
FFL	+53.080	4080	L 05	Private Patients
FFL	+49.000	4080	L 04	Multi-Specialty OPD, Head/Neck/Lung/Neuro, Men's Health, Women's Unit
FFL	+44.920	4080	L 03	Haematology, Central Staff and Conference
FFL	+40.840	4080	L 02	Multi-speciality Day Treatment, Aseptic Suite (Chemo)
FFL	+36.760	4080	L 01	Young Persons, Aseptic Suite and Offices
FFL	+32.680	5100	L 00	Main Entrance, Pharmacy, Loading Bay, Wellness & Therapy
FFL	+27.580	4080	L -1	Procedures, Diagnostics, Clinical Trials, Phlebotomy/Pathology
FFL	+23.500	450	L -2	FM, Plant, Bicycles, Showers/WC's
FFL	+17.040	6010		

**Long Section
Planning**

Work Package	Cost Check	Info/Briefing	Tender	Contract	Construction

Date	Ref.	Revision
30.09.08	A	Issued for Information under Memo 096.
30.10.08	B	Issued for Information under Memo 190.
07.11.08	C	Issued for Information under Memo 179.
12.11.08	D	Issued for Information under Memo 186.
14.11.08	E	Issued for Information under Memo 192.
17.11.08	F	Issued under Memo 196 for phase 3.2 ITPD.
21.11.08	G	Issued for Planning Application under Memo 202.
05.12.08	H	Issued for Planning Application under Memo 211.
12.12.08	I	Issued for Planning Application under Memo 219.

Date	Ref.	Revision
09.02.09	J	Issued for Planning Application under Memo 318.
26.02.10	K	Issued for internal review under Memo 1373
08.03.10	L	Issued for Discharge of Planning Conditions under Memo 1405.

Project	UCLH4A - Phase 3 Cancer Centre
Subject	Long Section Proposed
Architects	Hopkins Architects Ltd 27 Broadley Terrace, London, NW1 6LG T: 020 7724 1751 E: mail@hopkins.co.uk

Sort Code	Drawing Number	Rev.
A / UCLH4A	1531	L
Date	09.02.09	Scale 1:200 at A1