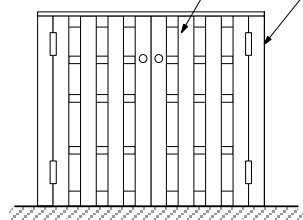
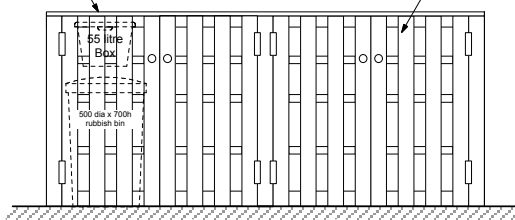


Timber enclosure to accommodate 2 no. 500 X 700 Bins + 2 no. 55 litre boxes
hardwood 'hit and miss walls' and roof

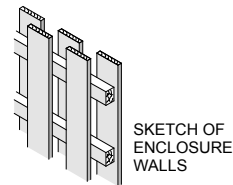


**BIN ENCLOSURE DETAILS
FOR EXISTING LOWER
GROUND FLOOR FLAT 1:25**

Timber enclosure to accommodate 4 no. 500 X 700 Bins + 4 no. 55 litre boxes
hardwood 'hit and miss walls' and roof



**BIN ENCLOSURE DETAILS FOR GROUND
FLOOR FLATS UPWARDS 1:25**



**SKETCH OF
ENCLOSURE
WALLS**

opaque glass to 1.7m
above FFL

white painted timber
windows in same style
as reproduced existing
bay below

Roof tiles to
match existing
(re-use existing
if possible)

Note - this extension was granted
planning permission 20-10-2009,
ref 2009/3473/P (subject to a
Section 106 Legal Agreement)

ROOF BEYOND

ROOF TILES

BRICK FACING

TIMBER CLADDING

GL

GL

GL

GL

GL

GL

GL

GL

GL

GL

GL

GL

GL

GL

GL

GL

GL

GL

GL

GL

GL

GL

GL

GL

GL

GL

GL

GL

GL

GL

GL

GL

GL

GL

GL

GL

GL

GL

GL

GL

GL

GL

GL

GL

GL

GL

GL

GL

GL

GL

GL

GL

GL

GL

GL

GL

GL

GL

GL

GL

GL

GL

GL

GL

GL

GL

GL

GL

GL

GL

GL

GL

GL

GL

GL

GL

GL

GL

GL

GL

GL

GL

GL

GL

GL

GL

GL

GL

GL

GL

GL

GL

GL

GL

GL

GL

GL

GL

GL

GL

GL

GL

GL

GL

GL

GL

GL

GL

GL

GL

GL

GL

GL

GL

GL

GL

GL

GL

GL

GL

GL

GL

GL

GL

GL

GL

GL

GL

GL

GL

GL

GL

GL

GL

GL

GL

GL

GL

GL

GL

GL

GL

GL

GL

GL

GL

GL

GL

GL

GL

GL

GL

GL

GL

GL

GL

GL

GL

GL

GL

GL

GL

GL

GL

GL

GL

GL

GL

GL

GL

GL

GL

GL

GL

GL

GL

GL

GL

GL

GL

GL

GL

GL

GL

GL

GL

GL

GL

GL

GL

GL

GL

GL

GL

GL

GL

GL

GL

GL

GL

GL

GL

GL

GL

GL

GL

GL

GL

GL

GL

GL

GL

GL

GL

GL

GL

GL

GL

GL

GL

GL

GL

GL

GL

GL

GL

GL

GL

GL

GL

GL

GL

GL

GL

GL

GL

GL

GL

GL

GL

GL

GL

GL

GL

GL

GL

GL

GL

GL

GL

GL

GL

GL

GL

GL

GL

GL

GL

GL

GL

GL

GL

GL

GL

GL

GL

GL

GL

GL

GL

GL

GL

GL

GL

GL

GL

GL

GL

GL

GL

GL

GL

GL

GL

GL

GL