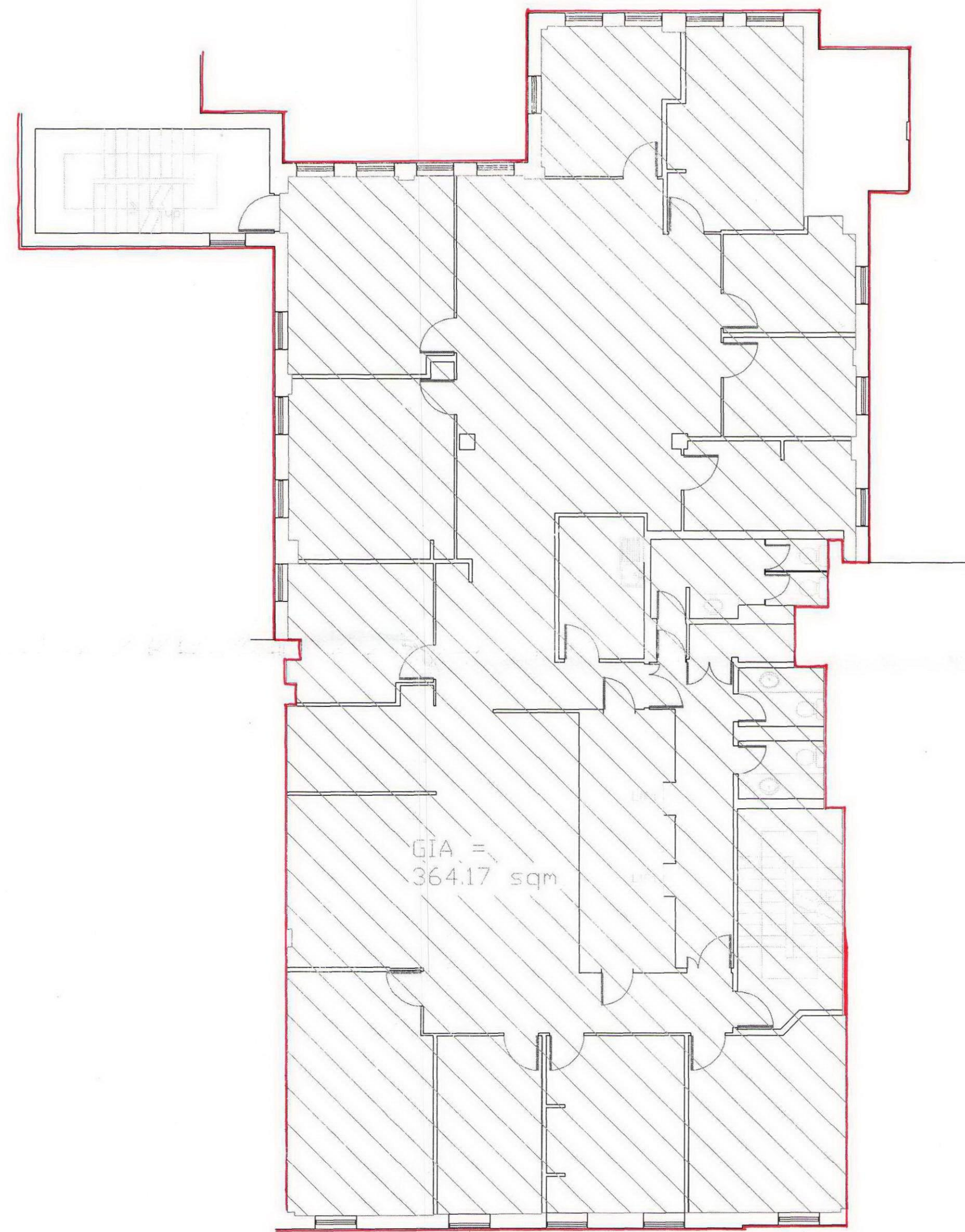


First Floor



Second Floor

15 Bloomsbury Square
Schedule of areas

Floor	Gross Internal area	Net Internal area
	Sq. m.	Sq. m.
Fifth	262.87	84.87
Fourth	321.01	251.25
Third	360.29	295.65
Second	364.17	301.69
First	364.15	300.80
Ground	275.03	136.91 (office area) 50.84 (Retail area)
Basement	630.24	111.55 (office area) 24.65 (Retail area)

Knight Frank
15 Bloomsbury Square
London WC1

Survey Drawing
First and Second Floors

Date: March 2009
Scale: 1:100 on A1

CAD Ref: 1620-02 GIA

Ross Laird
Measured Surveys

Ross Laird Limited
5 Lower King Street
Royston
Hertfordshire SG8 5AL

Telephone: 01763 249949
Facsimile: 01763 242912
email: rosslaird@btinternet.com
www.rosslaird.co.uk

ALL DIMENSIONS TAKEN TO FACE
OF DRY LINING OR WALL CLADDING
IF APPLICABLE

ALTHOUGH EVERY ENDEAVOUR IS MADE TO PROVIDE AN
ACCURATE SURVEY DRAWING IT IS RECOMMENDED THAT
CRITICAL DIMENSIONS SHOULD BE CHECKED ON SITE.
INACCESSIBLE AREAS WILL BE SHOWN USING A BROKEN
LINE.

COLUMN SIZES MUST BE CHECKED FOLLOWING REMOVAL
OF CLADDING.