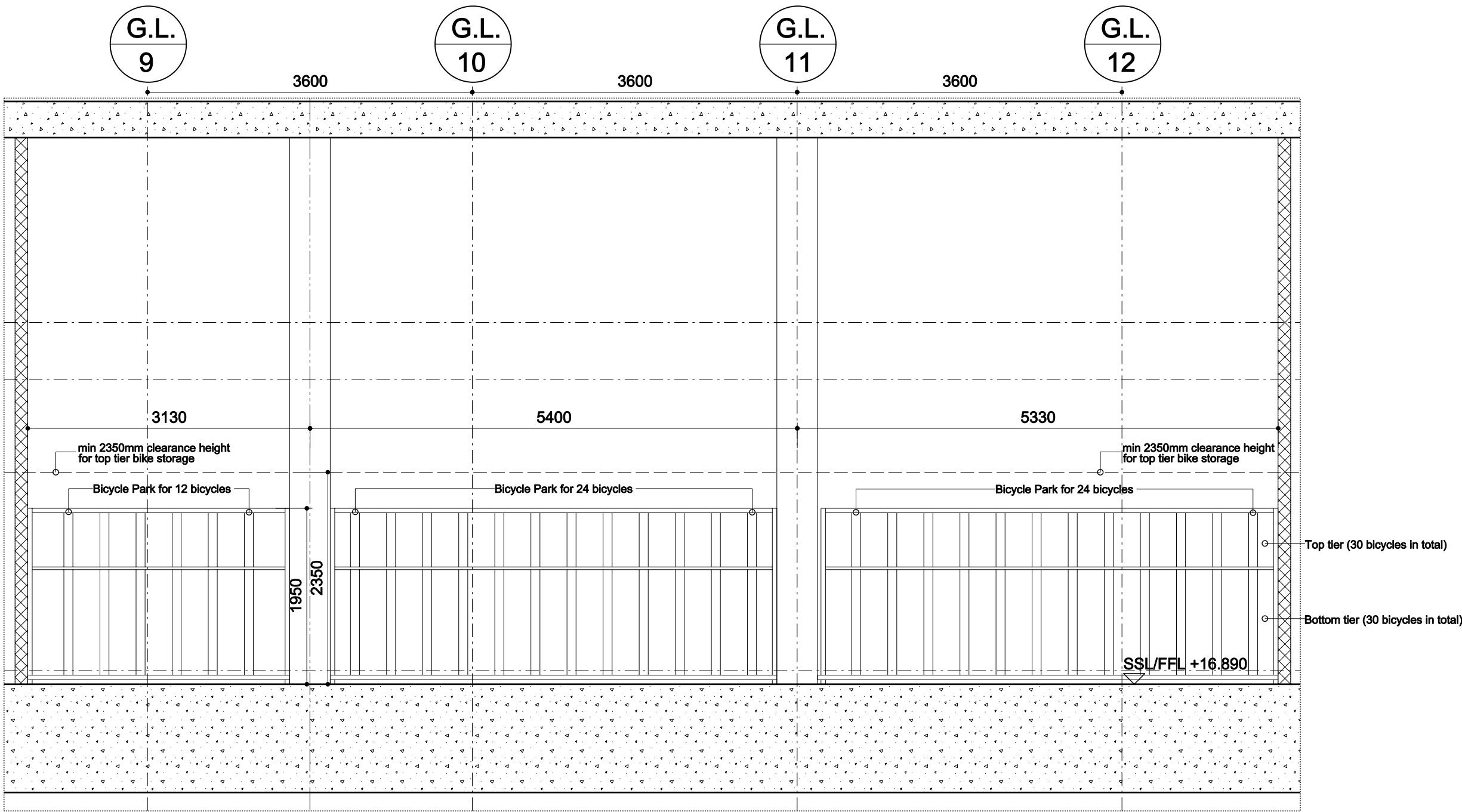
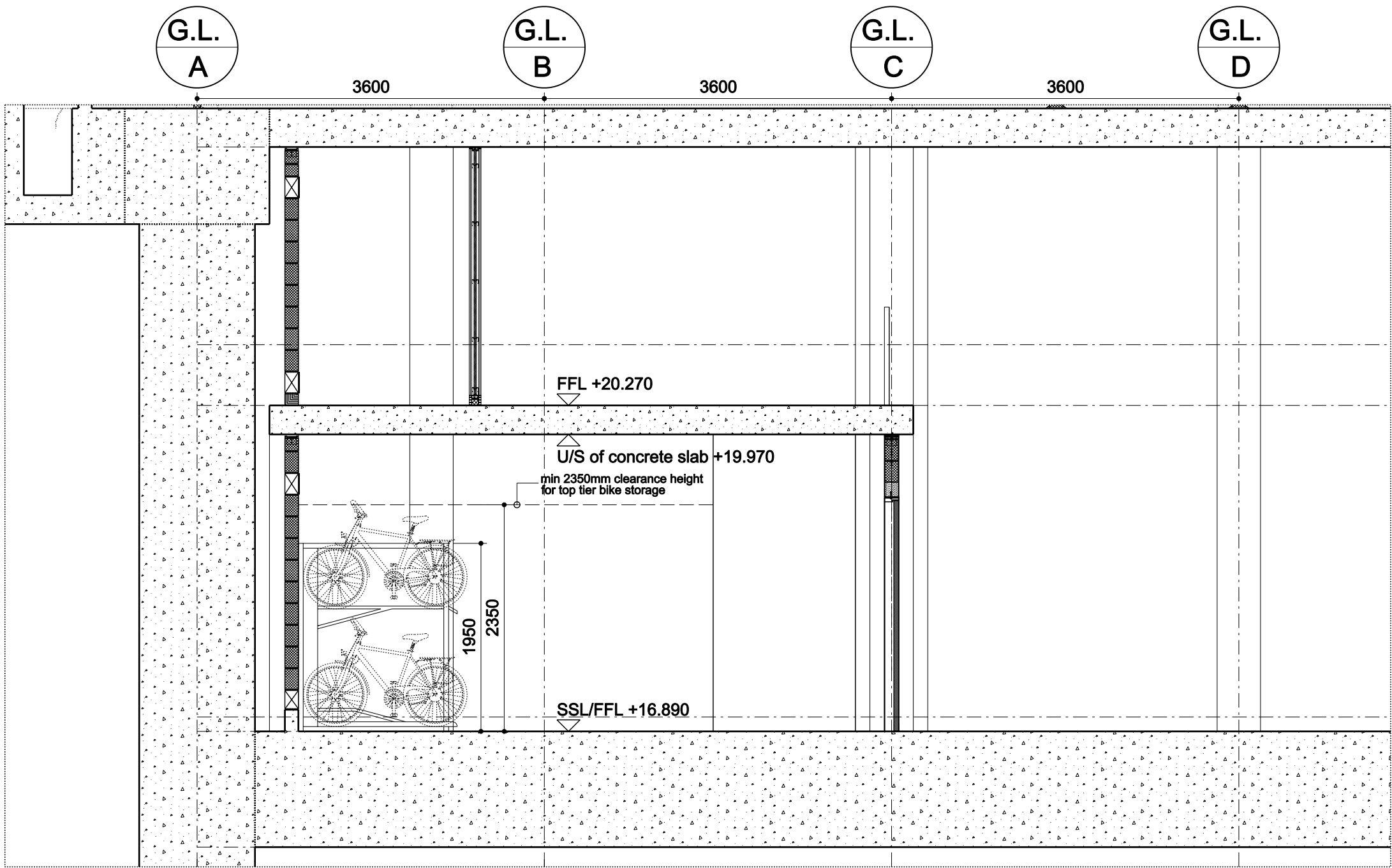


PLAN



INTERNAL ELEVATION A-A



INTERNAL ELEVATION B-B

General Notes:

- G1 For Site and Grid setting out refer to A/UCLH4A/3000
- G2 All dimensions to be checked on site
- G3 Any discrepancies between drawings to be reported to the Architect immediately.
- G4 All Levels are above ordnance datum (AOD)
New Levels are shown thus: 120.345
Existing Levels are shown thus: EX-20.345
Retained Existing Levels: EX-20.345
- G5 Use figured dimensions only. Do not scale from drawings. IF IN DOUBT, ASK.
- G6 Refer to Structural Engineers drawings for all structural and services information.
- G7 For tolerances see the Design Drawings and Specifications
- G8 For elements of work subject to Contractor's Design, this drawing is indicative of the visual & performance requirements only. The Contractor is responsible for the detailed design and co-ordination of the installation within the parameters defined in the specification, design drawings, contract terms and contract documents.
- G9 Room numbers are shown thus: 115
- G10 Door(D) & Window (W) References are shown thus: 115
- G11 Clear height is shown thus: 2750
(finished floor to finished soffit)
- G12 T Sheet Reference shown thus: IWS-01
- G13 Finishes are shown thus: 115
- G14 Setting Out Points shown thus: SOP
- G15 Refer to A/UCLH4A/9100 for T Sheet references, and to A/UCLH4A/9110 to 9167 for Architectural Specifications.

Notes

This drawing has been prepared to discharge Planning Condition No. 6 in A_UCLH4A_9055_A Planning Condition Programme.

NB. Planning Application Ref. - 2008/5900/Letter: 9 June 2009: Decision

For Information

Work Package	Cost Check	Info/Briefing	Tender	Contract	Construction
-					

Date	Ref.	Revision
04.01.10	A	Issued under Memo 1164: Planning Condition 6
06.01.10	B	Memo 1176: Planning Condition 6 - Bicycle Park
15.03.10	C	Issued under Memo 1447 Discharge of Planning Conditions 6 and 8

Date	Ref.	Revision

Project	UCLH4A - Phase 3 Cancer Centre
Subject	Internal Elevation Basement Bicycle Parking
Architects	Hopkins Architects Ltd 27 Broadway Terrace, London, NW1 6LG T: 020 7724 1751 E: mail@hopkins.co.uk

Sort Code	Drawing Number	Rev.
A / UCLH4A	1559	C
Date	04.01.10	Scale 1:50 at A1