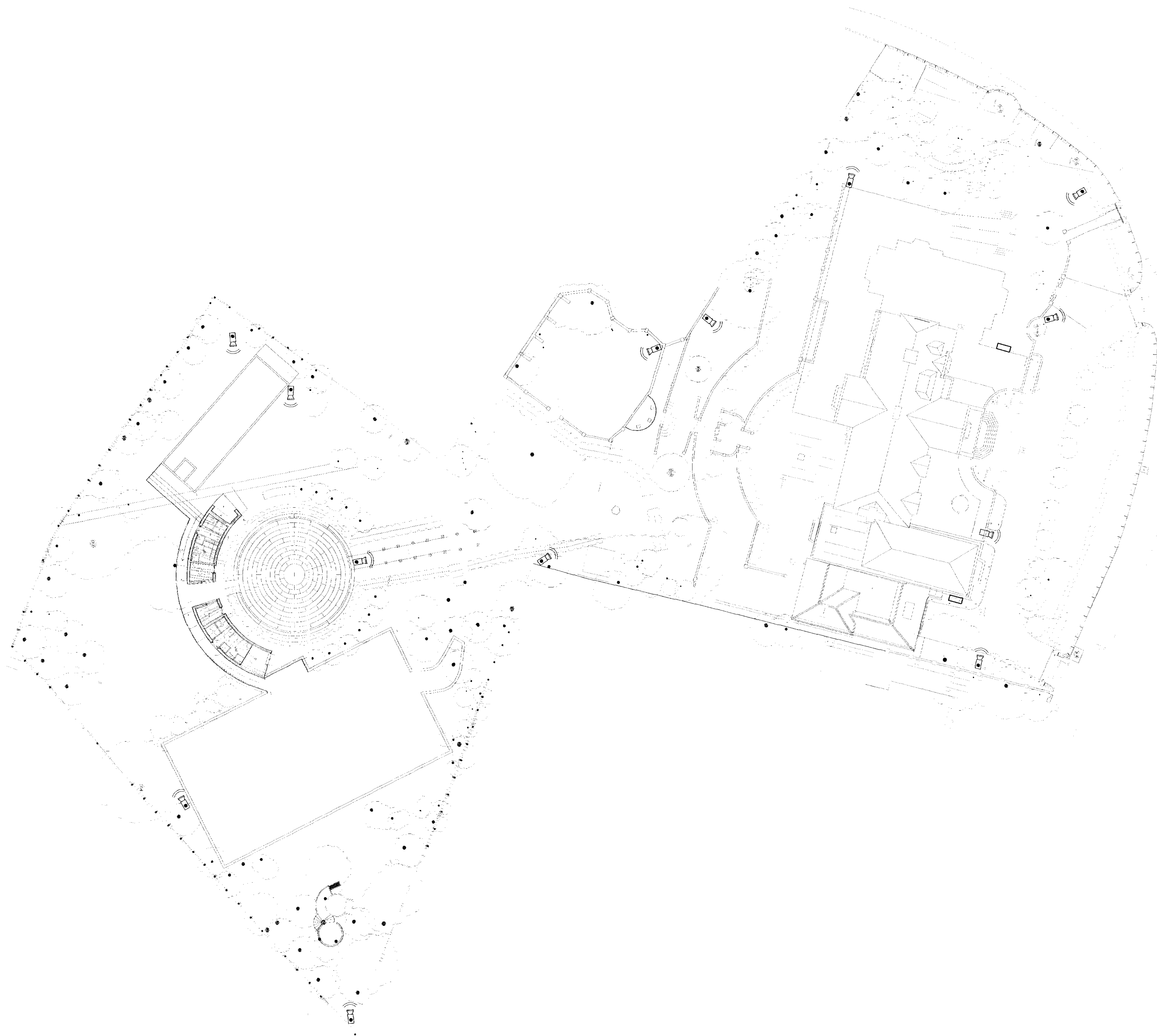





D:\Drawings\1639\WORKING\1639\1639-00115 CCTV\1639-E20.dwg : 15/03/2010 16:45:09, ISO A1



# NOTE

CAMERAS TO LEAVE WILL BE WALL MOUNTED  
CORNER UNITS. GARDEN CAMERAS WILL BE  
COLUMN MOUNTED COLUMN DETAIL WEC.  
TILT OVER SQUARE COLUMNS TPS RANGE  
FINISHED IN BLACK BASE DETAILS.

-  BELL BOXES
-  POLE MOUNTED CCTV CAMERAS
-  MOUNTED ON HOUSE

REVISIONS				
REV.	DATE	DESCRIPTION	CDM Chkd	Chkd

PROJECT CONSULTANTS  
ARCHITECT  
A.I.A.I.  
QUANTITY SURVEYOR  
  
STRUCTURAL DESIGNER  
  
CDM CO-ORDINATOR

THE SYMBOLS USED IN THIS DRAWING ARE  
THE SYMBOLS USED IN THIS DRAWING ARE  
THE SYMBOLS USED IN THIS DRAWING ARE  
THE SYMBOLS USED IN THIS DRAWING ARE



**Slender Winter Partnership**  
**CONSULTING ENGINEERS**  
The Old School, London Road, Westerham, Kent TN16 1DN  
T: 01959 564777 F: 01959 562802 E: [swp@swpltd.co.uk](mailto:swp@swpltd.co.uk)  
SWP Limited, Registered Office: London Road, Westerham, Kent, TN16 1DN  
Registered in England No 3735841

ORIGINATOR  
SLENDER WINTER PARTNERSHIP LIMITED

CLIENT  
LAURENCE KIRSCHER

PROJECT  
SARUM CHASE,  
23 WEST HEATH ROAD, NW3

DRAWING TITLE  
CCTV CAMERA POSITIONS

CAD REF: 1639-E20	CHECKED DATE T.R. AUG.09
SCALE 1:250 @ A1	DRAWN DATE L.J. AUG.09
DRAWING NUMBER 1639-E20	REVISION