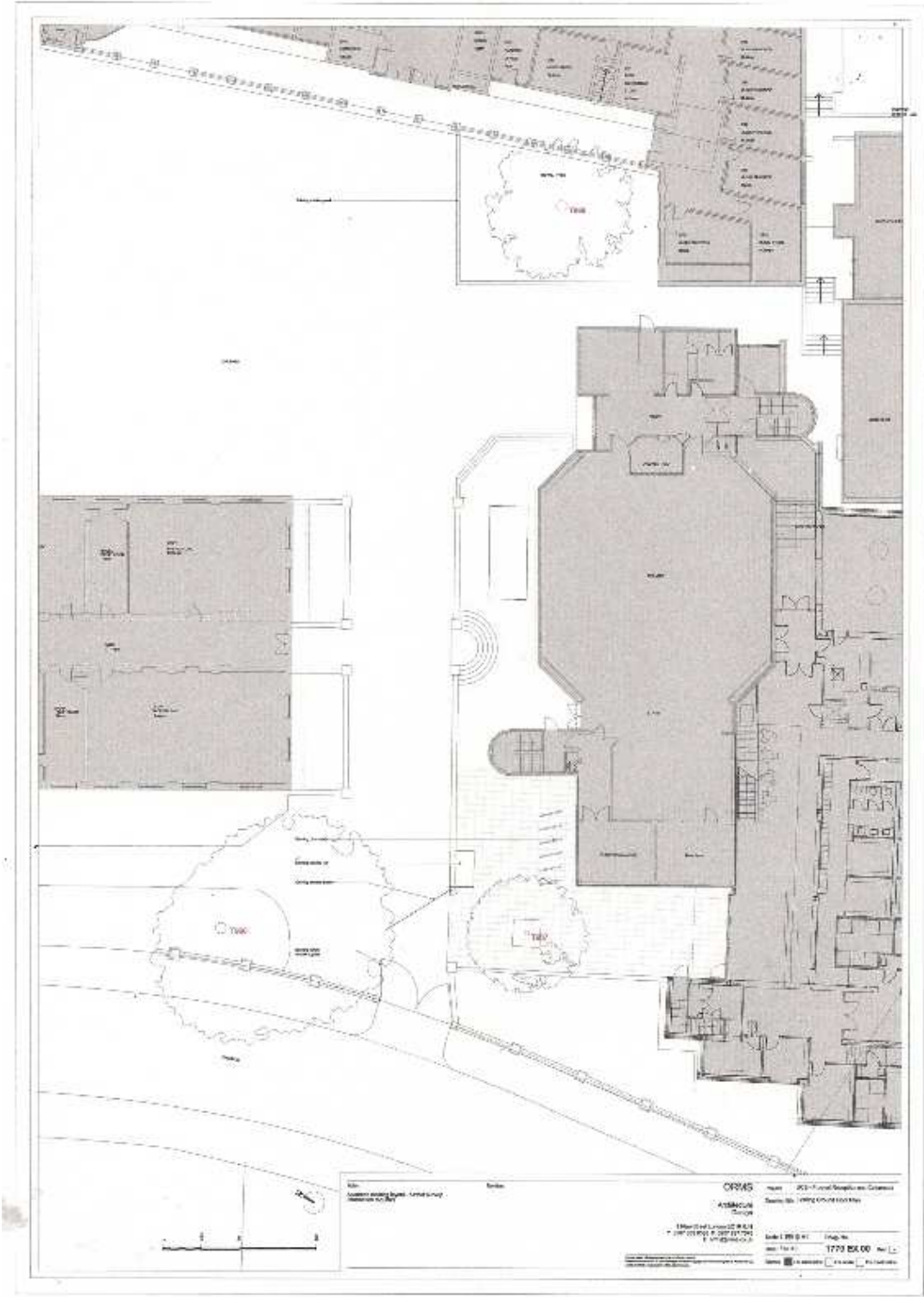


## **Appendix B.1: Existing Site Plan**

**Frognal Reception and Collonade  
University College School  
Frognal  
Hampstead  
London  
NW3 6XH**



**Appendix B.2: Proposed Site Plan /  
Tree Protection Recommendations**

**Frognal Reception and Collonade  
University College School  
Frognal  
Hampstead  
London  
NW3 6XH**

Architectural site plan for the proposed 1770 GA 09 project. The plan shows a large building complex with various rooms, including a large central hall, a kitchen, and several smaller rooms. A pink rectangular area highlights a specific section of the building. A pink curved line indicates a proposed driveway or access point. The plan includes a north arrow, a scale bar, and a legend. The legend identifies the pink area as 'Proposed Driveway' and the pink curved line as 'Proposed Driveway'.

18

## **Appendix C: Photographs**

**Frognal Reception and Collonade  
University College School  
Frognal  
Hampstead  
London  
NW3 6XH**

**C.1 Photograph of T966, University College School**



**C.2 Photograph of T967, University College School**



**C.3 Photograph of T967, University College School**



**C.4 Photograph of T968, University College School**



## **Appendix D: Tree Protection Notice**

**Frognal Reception and Collonade  
University College School  
Frognal  
Hampstead  
London  
NW3 6XH**



## **University College School - Frognal** **CONSTRUCTION SITE NOTICE**

### **Guidance for ALL EMPLOYEES working on site in** **relation to the tree protection**

- There should be no storage of fuels, chemicals or cement based products within the Root Protection Area (RPA) of any of the trees on or near the site during the construction. There should be no fires within 10 metres of the foliage, branches or trunk of any of the trees. Notice boards, telephone cables etc should not be attached to any part of any of the trees.
- The severance of any tree roots encountered larger than 2.5cm in diameter will affect the stability of the tree and therefore this **MUST NOT** occur.
- Whilst undertaking any excavations within the specified Root Protection Area (as below) ANY tree roots encountered over 2.5cm in diameter must be retained. Hand digging is to continue around any such tree roots.
  - T966 – Willow: 10 metres
  - T968 – Oak: 7 metres
- If at any point it is deemed not possible to continue with excavations without having to damage significant tree roots, the Local Authority Tree Officer and / or the appointed Arboricultural Consultant must be contacted before works proceed further.

## **Appendix E: Legislation**

1. *British Standard 5837: 2005 - Guide for Trees in Relation to Construction* (2005).
2. *NJUG Guidelines For The Planning, Installation And Maintenance Of Utility Apparatus in Proximity To Trees* (Issue 2), (November 2007).

## **Appendix B: Green Travel Plan**

---

### Supporting Information

**Version 3**



University College School

Senior School

Frognal  
Hampstead  
London  
NW3 6XH



# SCHOOL TRAVEL PLAN 2007-2010

UCS Senior School Primary Contact:

Keith Garwood

Traffic Officer

University College School  
Frognal  
Hampstead  
London  
NW3 6XH

**Tel:** 020 7435 2215

**Fax:** 020 7433 2111

e-mail: [seniorschool@ucs.org.uk](mailto:seniorschool@ucs.org.uk)

web: [www.ucs.org.uk](http://www.ucs.org.uk)

Version record:

1.0 March 2006

2.0 August 2007

3.0 November 2007

<b>Contents</b>	<b>Page</b>
Section 1: Introduction	4
Section 2: Objectives	13
Section 3: What the School is already doing	15
Section 4: Developing the STP	19
Section 5: Travel Issues identified by the School Community	20
Section 6: Targets	22
Section 7: Action Plan	24
Section 8: Monitoring Strategy	35
Section 9: Sign Off	36

#### **Appendices:**

Appendix 1: Letter of Intent	38
Appendix 2: Baseline Information	39
Appendix 3: Pupil Survey: Feedback and Analysis	40
Appendix 4: Parent Survey: Feedback and Analysis	45
Appendix 5: Staff Survey and Feedback	48
Appendix 6: Consultation and Involvement	49

## Section 1: Introduction

**“Drawing up this School Travel Plan has involved the whole of the School community in raising and sharing a wide variety of ideas, so that priorities, objectives and targets can be defined. It is a living document. It does not simply express our commitment to improving the local environment, but aims also to help us to educate our students in the responsibilities that they will face as tomorrow’s citizens.”**

*Kenneth Durham  
Headmaster,  
UCS*

University College School (UCS), Hampstead is a charity (Number 312748). The School’s governing body and trustees are the UCS Council, who govern The Phoenix School, the UCS Junior Branch and UCS Senior School. It is the Council’s policy that all three Schools should recognise a clear responsibility to the wider community in respect of environmental issues and local traffic flows. Following from this, The Phoenix School and UCS Junior Branch have already worked closely with Camden and TfL in the preparation of School Travel Plans. In their meeting of June 2005, Council resolved that UCS Senior School should do the same. The Headmaster has been fully involved in the early stages of this process and reports regularly to Council on the progress of the Plan. The plan describes the current issues and travel patterns, and sets out what measures can be implemented to encourage a change to a more sustainable travel pattern.

UCS Senior School is an independent day school for some 750 boys aged 11-18. Ninety boys enter the School at the start of Year 7 (age 11) each year, and a further thirty at the start of Year 9 (age 13). The great majority remain until the age of eighteen.

- The School’s LEA number is: 202
- The School’s DfES number is: 202-6018

**Ethos.** Since the earliest days of its foundation as part of University College, London in 1830, UCS has always prized the twin principles of freedom of intellect and respect for individuality. Selecting students with no regard to race or creed, UCS fosters in them a sense of community, alongside a tolerance of and respect for others.

The absence of bells, the insistence on rules that develop rather than restrict, the mix of faiths and backgrounds, the breadth of subjects, and the range of opportunities at the





School all demonstrate the unique intellectual and social liberalism that underpins UCS' reputation.

By offering the fullest range of opportunities for personal and group endeavour, the School teaches the value of commitment and the joy of achievement. UCS is thus not only a place of study, but also of self-discovery and self-expression; a School that places equal value on learning with others, as much as on learning from others.

The ethos of the School is to promote principles of liberal scholarship and to foster a sense of community alongside a tolerance of and respect for the individual. The School places importance on the need to preserve the natural resources of the environment, awareness of road safety and the promotion of a healthy lifestyle.

UCS is proud of its reputation and its history. It is one of the oldest schools in Hampstead and is proud to be an important element of the Hampstead community. Its ethos, its belief in religious tolerance, its excellent academic standards and the loyalty and affection that it inspires in its pupils, fit it well for such a role.

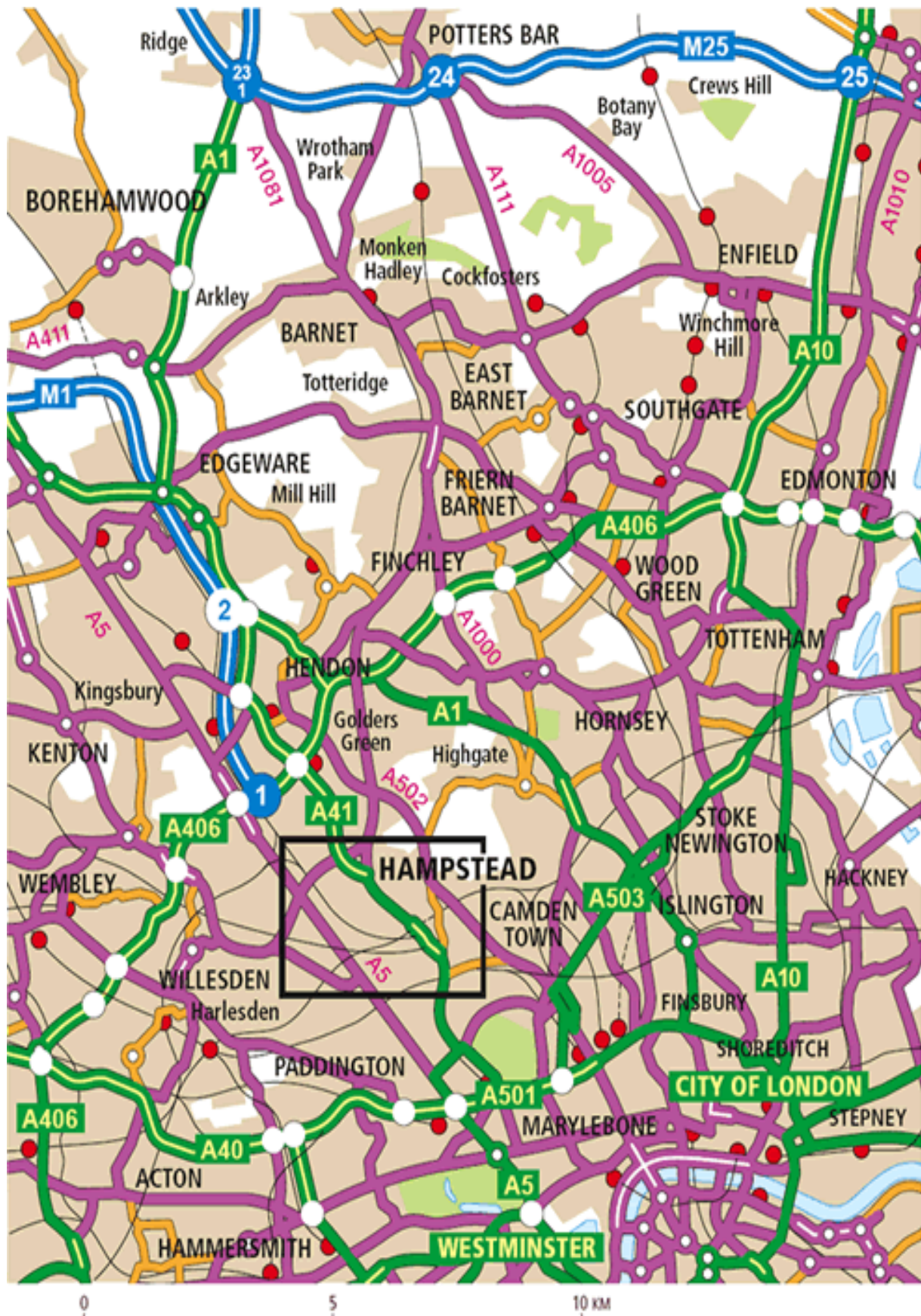
UCS Senior School takes seriously its responsibility to provide its students with the broadest possible education. In particular, the School is keen to instil in its students a strong sense of social responsibility. UCS considers that educating young people to understand the need to preserve natural resources, to be aware of the effects of their attitudes and behaviour on others, to promote the safety of all on the roads, and to appreciate the importance of regular exercise is an essential element of a broad, modern education.



## Location

The School is housed in its own buildings a few minutes walk from Hampstead village and from Finchley Road. The School has specialist facilities for art, design technology, music, science, indoor sport, swimming and ICT, which are all located on site. UCS also has an outdoor sports ground in West Hampstead (See Map 2). The School is:

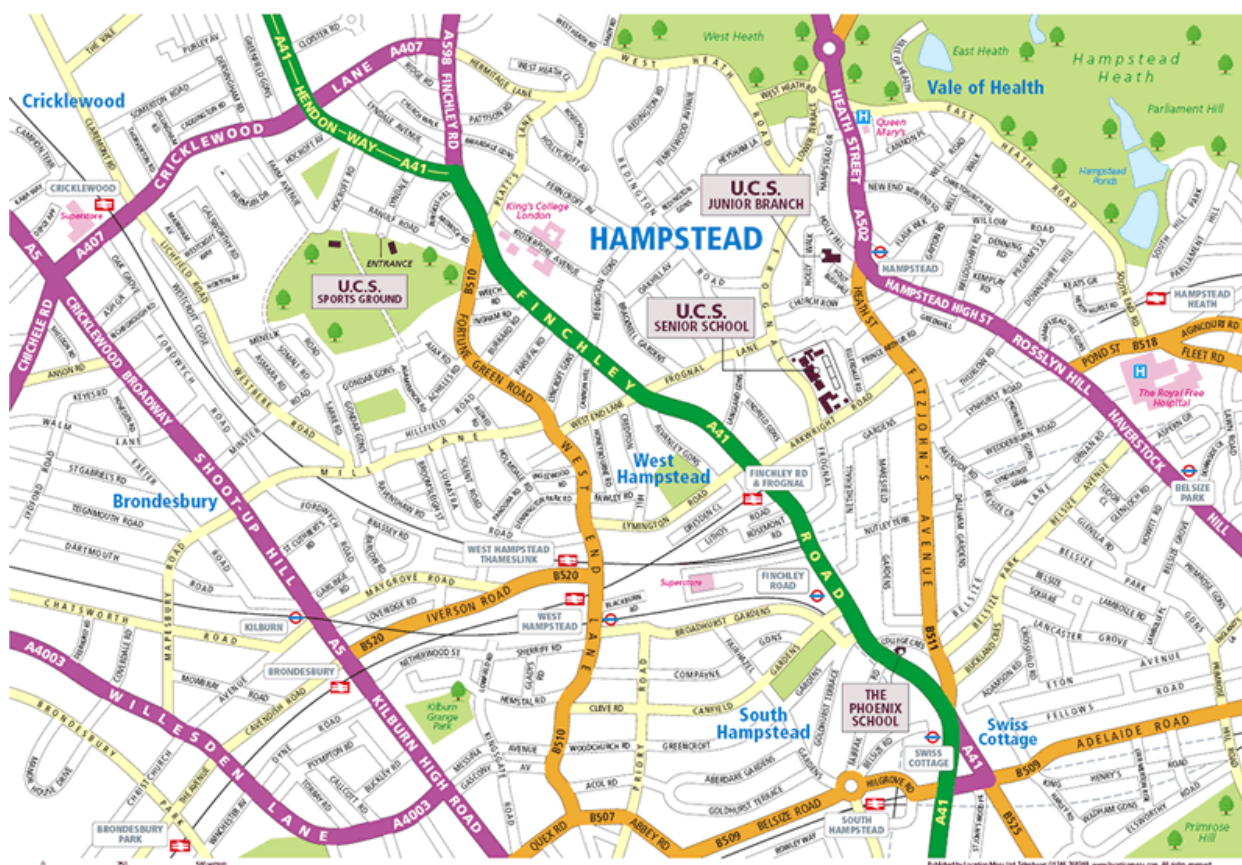
- Is a predominantly local School with a relatively wide catchment area.
- Is located in a residential area with limited Pay-and-Display on-street parking and with no satisfactory stopping places for buses or coaches in the vicinity.
- Is close to the Underground stations at Hampstead and at Finchley Road.
- Is close to the mainline rail stations at West Hampstead and at Finchley Road & Frognal.



**Map 1: Hampstead**  
(See Map 2 for detail)



## Map 2: School and Sports Ground Location



**Catchment Area.** Parents' postcodes areas are as follows and are highly concentrated to the local N and NW areas. Whilst demonstrating that this is a predominantly local school, it also has a relatively wide catchment area, as one would expect from a senior school.

CM16 (3)	<b>N6 (35)</b>	<b>NW1 (18)</b>	SE26 (1)
EC2 (1)	N7 (6)	<b>NW2 (46)</b>	SW1-6 (2)
EN4-5 (6)	<b>N8 (17)</b>	<b>NW3 (138)</b>	W1-8 (10)
HA1-5 (7)	<b>N10 (22)</b>	<b>NW4 (13)</b>	<b>W9 (17)</b>
<b>HA7 (11)</b>	N11 (1)	<b>NW5 (18)</b>	W10-11 (7)
HA8-9 (6)	<b>N12 (16)</b>	<b>NW6 (46)</b>	WD7-17 (3)
<b>N1 (10)</b>	N16 (5)	<b>NW7 (16)</b>	WC1 (1)
<b>N2 (46)</b>	<b>N19 (15)</b>	<b>NW8 (32)</b>	
<b>N3 (37)</b>	<b>N20 (11)</b>	NW9-10 (12)	
N4-5 (13)	N21-22 (2)	<b>NW11 (94)</b>	

## School Terms & Hours

The School operates a standard 3 term academic year. However, terms are generally shorter than for the maintained sector with UCS open for an average of 168 teaching days per year in comparison to about 190 for maintained schools, i.e. ~12% less. The standard School day runs from 08.50 am until 4.00 pm. However, a wide variety of clubs and activities operate outside these hours, including before school hours. To accommodate these activities, and to offer students the opportunity to choose the times at which they travel, the School is open from 07.00 am until 6.00 pm. The School runs a breakfast facility to allow pupils to arrive from 8am onwards. This also staggers the arrival time.

<b>Monday to Friday</b>	<b>Open/Start</b>	<b>Close/Finish</b>
School site	7.00am	6.00pm
<b>Pupils official School timetable</b>	<b>8.50 am</b>	<b>4.00pm</b>
After school clubs (if applicable)	4.00pm	6.00pm

## Transport Links:

**By Foot:** The Senior School entrances on Frognal can be reached from all directions over existing pavements, although physical width limitations and other obstacles, including



street furniture and traffic calming measures combined with occasional overgrowth from gardens make some stretches problematic. Very high traffic density unrelated to the School itself, particularly during the morning rush hour at the junction of Arkwright Road and Frognal, makes road crossing difficult despite the raised pavement crossings in close proximity to the School on Frognal and on Arkwright Road.



There are four entrances to the site, all off Frognal. The top entrance is currently being used for construction work and is closed to all School traffic and pedestrians. The second entrance is a pedestrian gate only and is controlled by digital keypad. The middle gate is sensor controlled for use only by vehicles leaving the site and remains closed otherwise. The lower gate is permanently manned and all visitors must sign in. Any pupils leaving the site must sign out. There is a barrier to control vehicle access to the site

**By Cycle:** Frognal is a designated cycle road. However, at peak times, the large volume of non-school traffic moves along it at less than walking pace, reducing practical use by pupils or staff on bicycles. The School has facilities for the safe storage of bicycles. Although the 60 cycle rack spaces are sufficient for current needs, the provision is nevertheless being increased to cater for intended growth in cycling and in accordance with planning consent conditions imposed by Camden (Application 2007/20121/P). In addition to safe storage for bicycles, the School also provides changing and showering facilities for staff who cycle to work.

