

Continuous perspex lid removable in 1000mm sections

Continuous MS angle with painted finish

Lid to cover cable box to match finish of light fitting removable in 1000mm sections

Fixings into existing brickwork to be made into the centre of the brick as Str. Eng. specification

Light fittings to BAM services specification

Stainless steel blade @ 1000mm c/c sized by str. eng. fixed back to existing brickwork

Continuous MS angle with painted finish

Continuous box for cabled services size TBC by BAM services

Holes for services sized and positioned by BAM services

Light fittings to BAM services specification

Continuous MS angle with painted finish

Continuous 48mm diam stainless steel tube welded to blades to form lighting rig

Stainless steel blade @ 1000mm c/c sized by str. eng.

Holes for services sized and positioned by BAM services

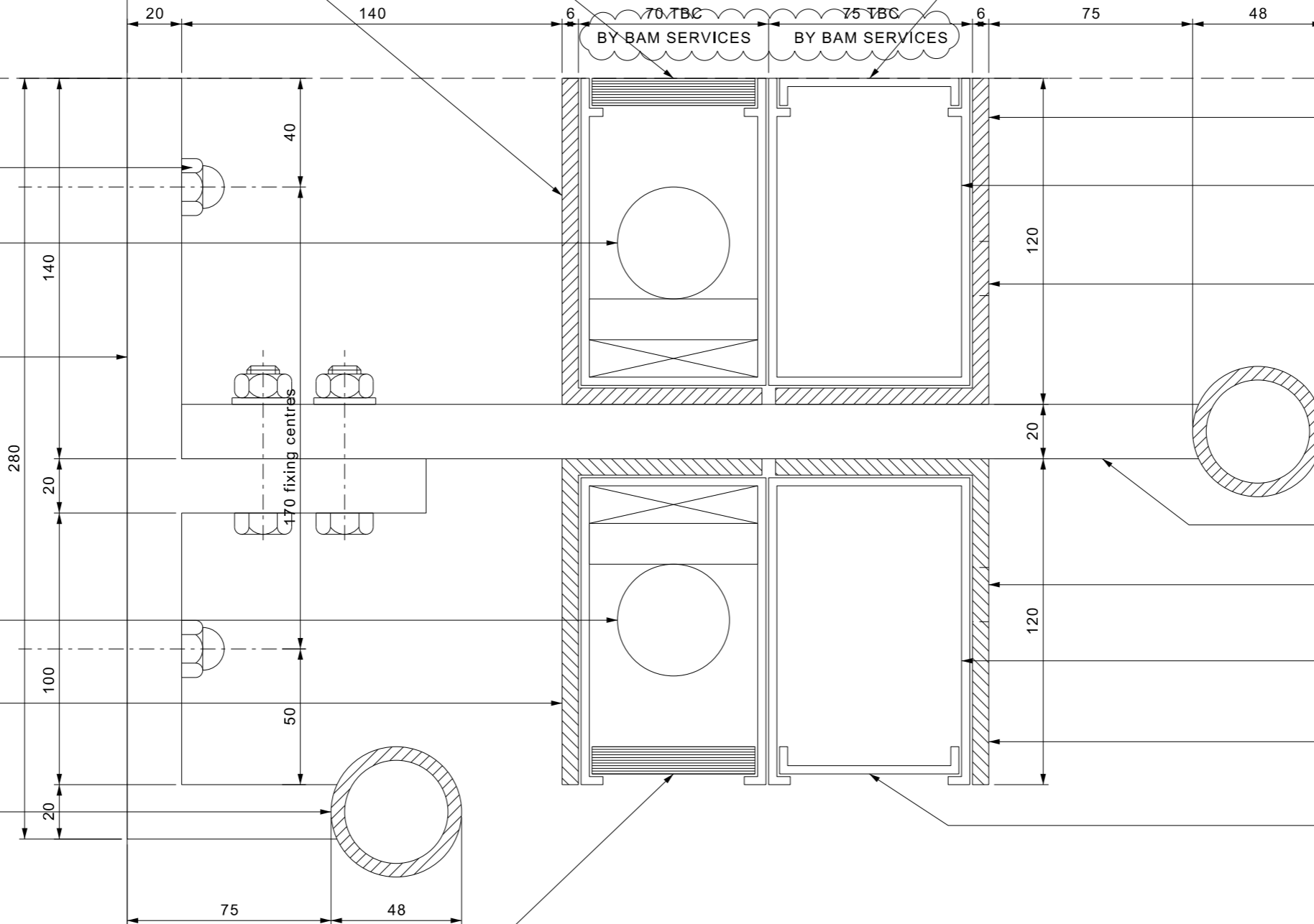
Continuous box for cabled services size TBC by BAM services

Continuous 48mm diam stainless steel tube welded to blades

Continuous perspex lid removable in 1000mm sections

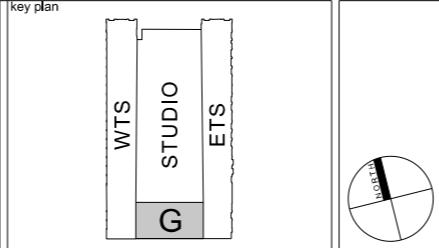
Continuous MS angles with painted finish

Stainless steel lid to cover cable box removable in 1000mm sections



DO NOT SCALE FROM THIS DRAWING

rev	by	date	van	chkd	amendments
2	RP	25.03.10			Revisions as bubbled.
1	RP	16.10.09			Revisions as bubbled.
0	RP	23.07.09			Amended as bubbled, ISSUED FOR CONSTRUCTION
A	RP	08.07.09			Amended as bubbled (S.W. comments)
-	RP	15.06.09			ISSUED FOR COMMENT



weedonpartnership architects
 Quadrant Court
 47-49 Cathorpe Road
 Edgbaston
 Birmingham
 B15 1TH
 T 0121 454 4171
 F 0121 455 9152
 www.weedonpartnership.co.uk
 architects@weedonpartnership.co.uk
 BIW reference 15900-G-A2726

project
ARGENT ESTATES LTD.
EGY KINGS CROSS
 title
CONTRACT NO. 1
GRANARY BUILDING
LIGHTING RAIL

drawing status				
FOR COMMENT				
contract no.	scale		1:2 @ A3	
client ref.	date		JUNE 2009	
drawn by	RP	checked by		
drawing no	15900	G	A2726	2