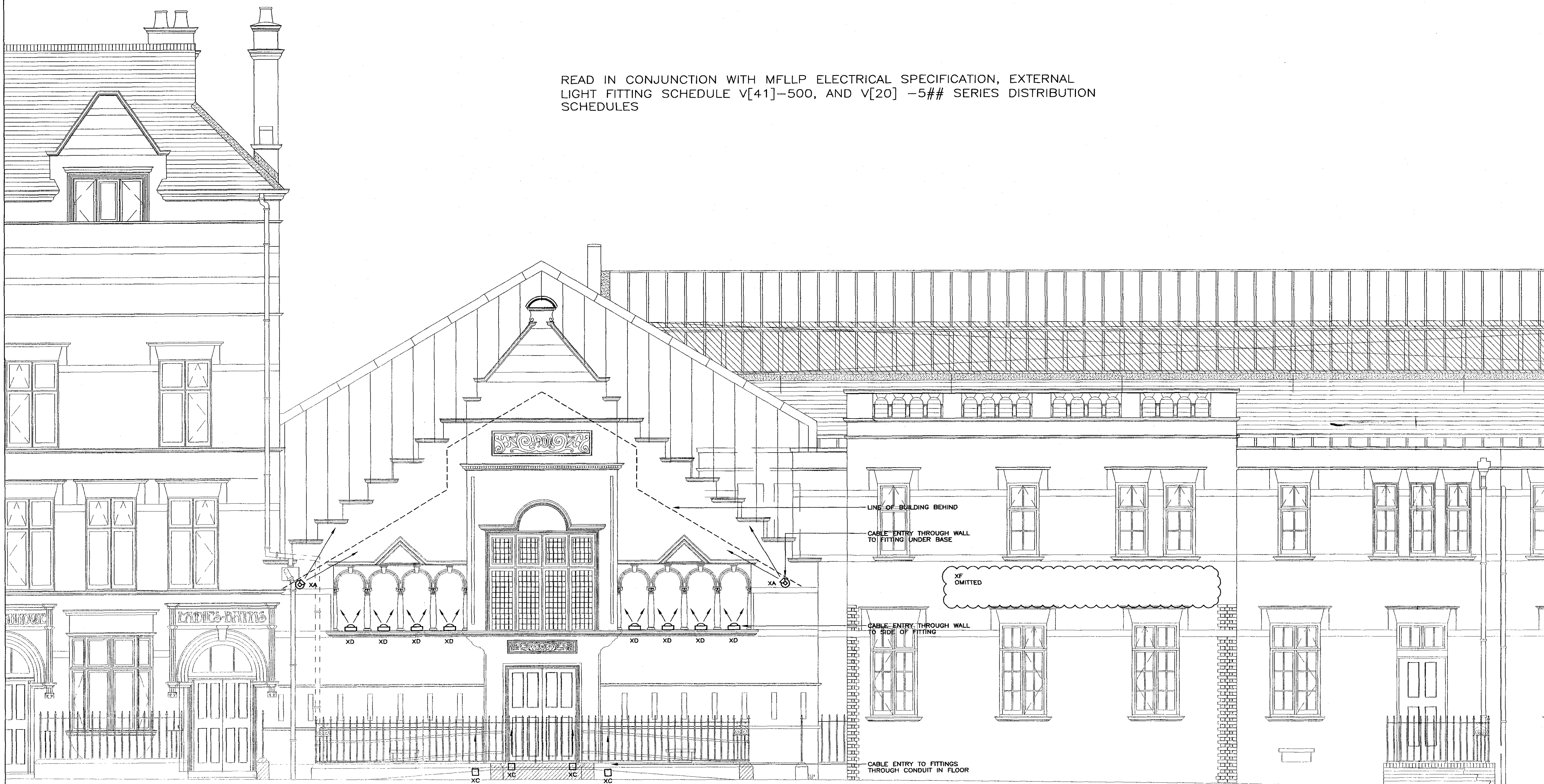


- NOTES:
1. TO BE READ IN CONJUNCTION WITH MFLLP SCHEDULE OF EXTERNAL LIGHT FITTINGS V41-500
 2. ALL CABLES & CONTROL GEAR TO BE HIDDEN

READ IN CONJUNCTION WITH MFLLP ELECTRICAL SPECIFICATION, EXTERNAL LIGHT FITTING SCHEDULE V[41]-500, AND V[20] -5## SERIES DISTRIBUTION SCHEDULES



GRAFTON ROAD ELEVATION
29.00 A.O.D

CONSTRUCTION

D	08/02/10	CONSTRUCTION ISSUE
C	01/12/08	CONSTRUCTION ISSUE
C	23/05/08	TENDER X-REF REVISED TO BE PRICED AS A COST OPTION
B	06/05/08	PRE-TENDER
A	26/01/08	STAGE B
.	26/06/07	1ST STAGE TENDER
.	03/08/07	STAGE D
rev	date	description

maxfordham
ENGINEERING DESIGN ENVIRONMENT

Max Fordham Consulting Engineers
42/43 Gloucester Crescent
London NW1 7PE
t. 020 7267 5161
f. 020 7482 0329
www.maxfordham.com

Max Fordham LLP is a British Limited Liability Partnership Registered in England No OC300029

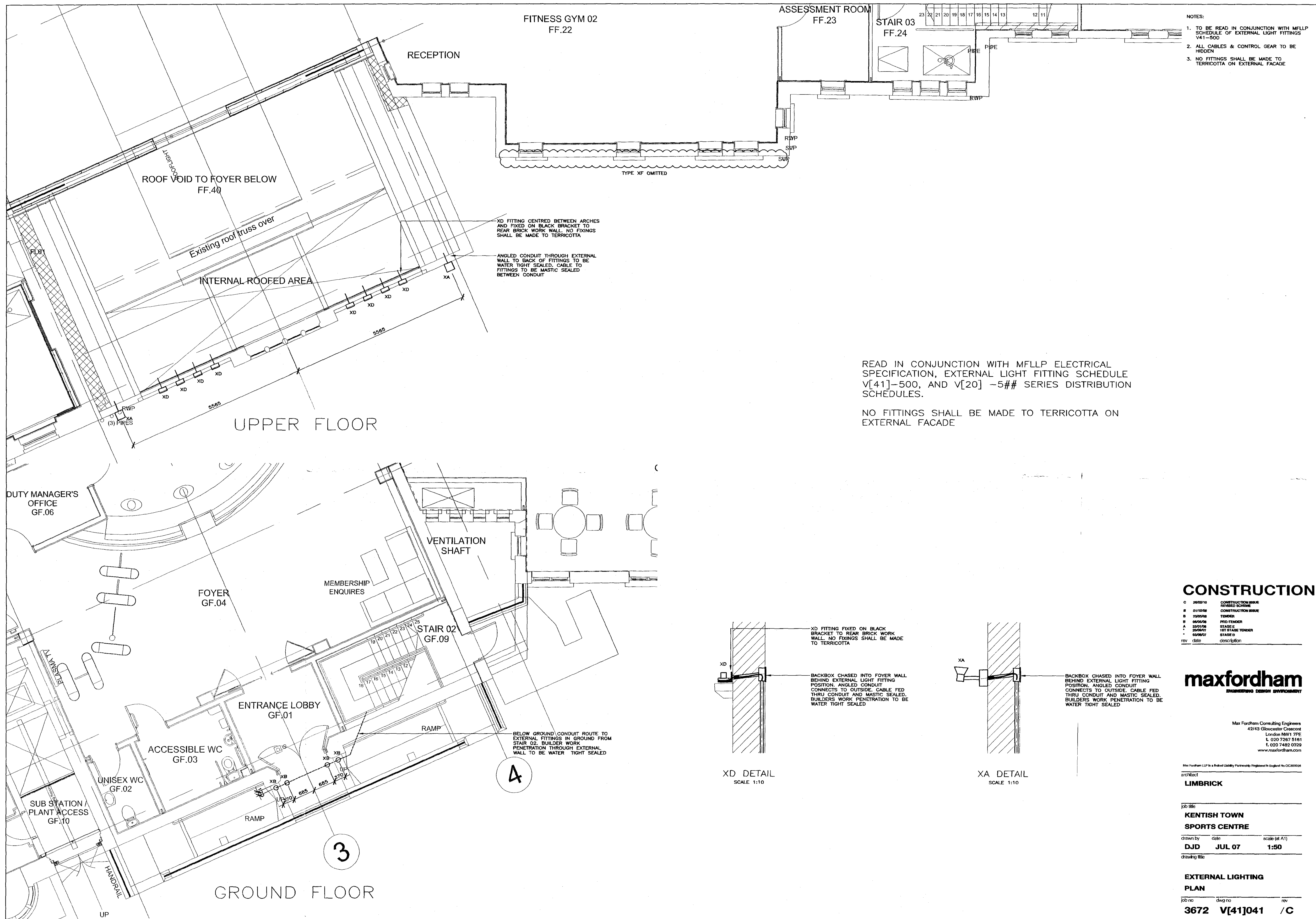
architect
ROBERTS LIMBRICK

job title
**KENTISH TOWN
SPORTS CENTRE**

drawn by date scale (at A1)
DJD JUL 07 1:50

drawing title
**EXTERNAL LIGHTING
ELEVATION**

job no dwg no rev
3672 V[41]040 /D



CONSTRUCTION

rev	date	description
C	26/02/10	CONSTRUCTION ISSUE REVERSED SCHEME
B	01/12/08	CONSTRUCTION ISSUE
#	23/05/08	TENDER
#	08/05/08	PRE-TENDER
A	25/01/08	STAGE E
*	20/06/07	1ST STAGE TENDER
*	03/09/07	STAGE D

maxfordham
ENGINEERING DESIGN ENVIRONMENT

Max Fordham Consulting Engineers
42/43 Gloucester Crescent
London NW1 7PE
t. 020 7267 5161
f. 020 7482 0329
www.maxfordham.com

Max Fordham LLP is a limited liability partnership registered in England No. OC300028

architect
LIMBRICK

job title
**KENTISH TOWN
SPORTS CENTRE**

drawn by date scale (at A1)
DJD JUL 07 1:50

drawing title
**EXTERNAL LIGHTING
PLAN**

job no. dwg no. rev
3672 V[41]041 /C