

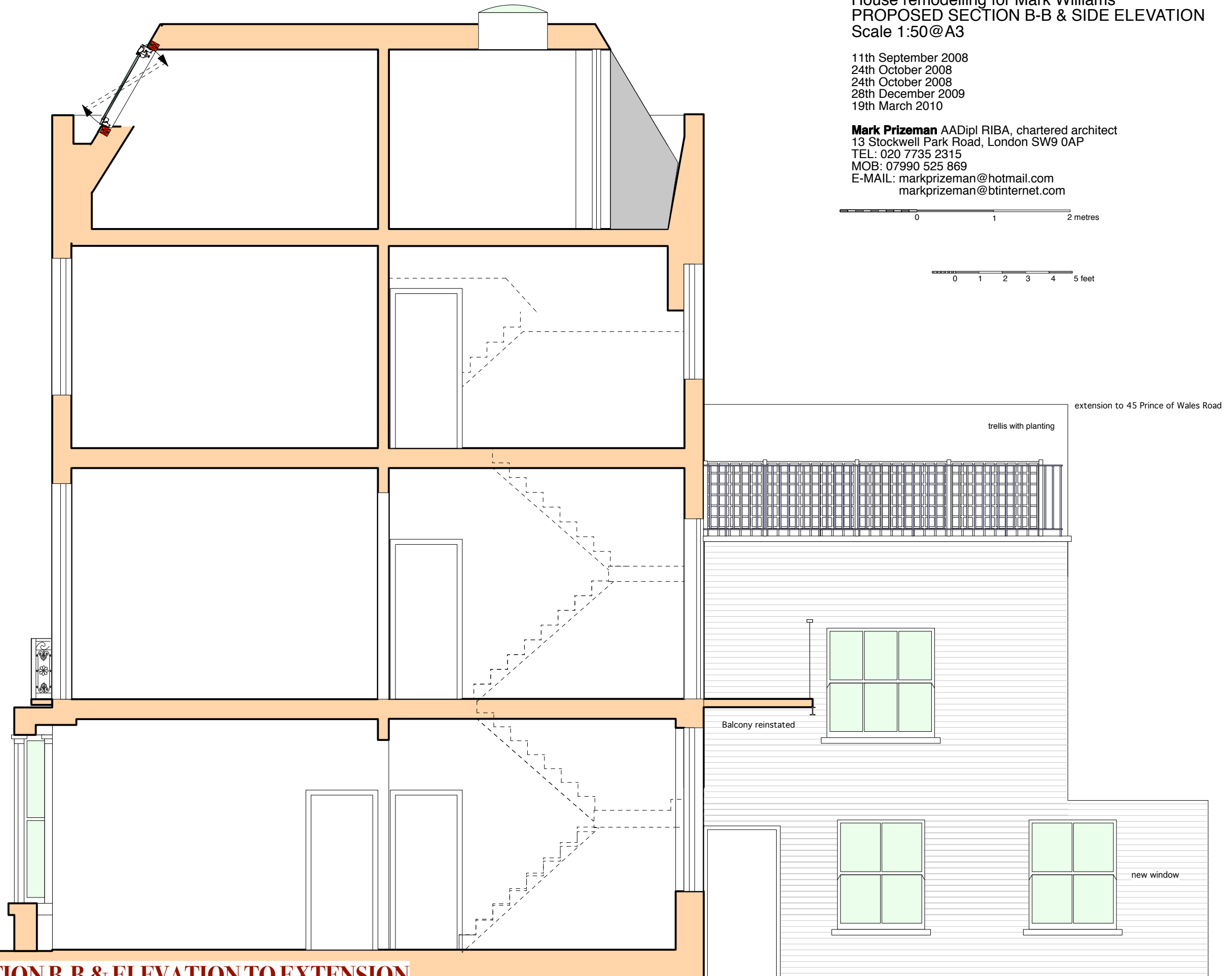
POW 16D - 47 PRINCE OF WALES ROAD, LONDON, NW5 3LJ
House remodelling for Mark Williams
PROPOSED SECTION B-B & SIDE ELEVATION
Scale 1:50@A3

11th September 2008
24th October 2008
24th October 2008
28th December 2009
19th March 2010

Mark Prizeman AADipl RIBA, chartered architect
13 Stockwell Park Road, London SW9 0AP
TEL: 020 7735 2315
MOB: 07990 525 869
E-MAIL: markprizeman@hotmail.com
markprizeman@btinternet.com

0 1 2 metres

0 1 2 3 4 5 feet



PROPOSED SECTION B-B & ELEVATION TO EXTENSION