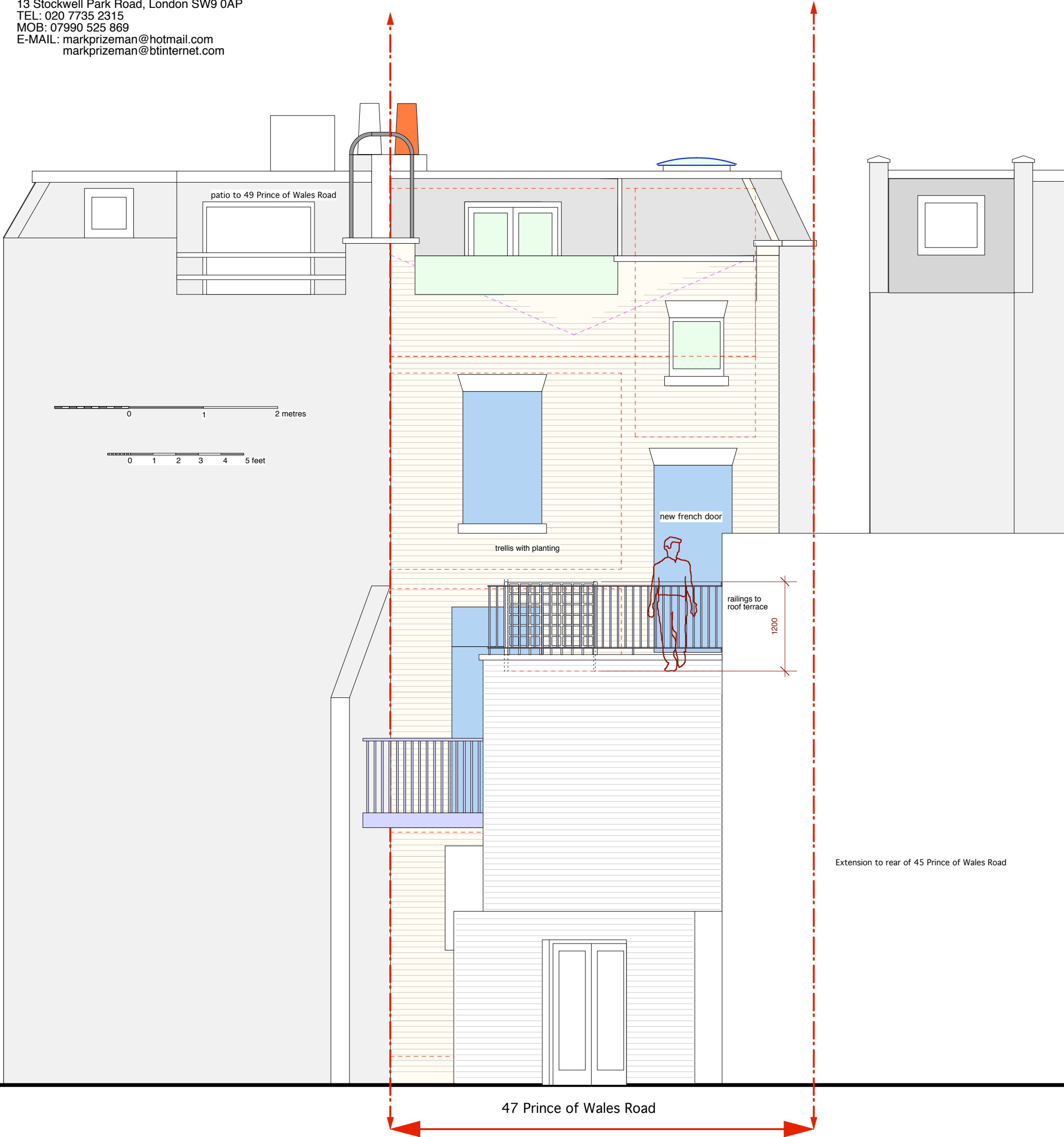


POW 7G - 47 PRINCE OF WALES ROAD, LONDON, NW5 3LJ
House remodelling for Mark Williams
PROPOSED REAR ELEVATION
Scale 1:50@A3

27th April 2008
5th August 2008
11th September 2008
23rd September 2008
24th October 2008
24th October 2008
1st December 2009
19th March 2010

Mark Prizeman AADipl RIBA, chartered architect
13 Stockwell Park Road, London SW9 0AP
TEL: 020 7735 2315
MOB: 07990 525 869
E-MAIL: markprizeman@hotmail.com
markprizeman@btinternet.com



PROPOSED REAR ELEVATION