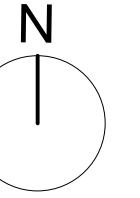


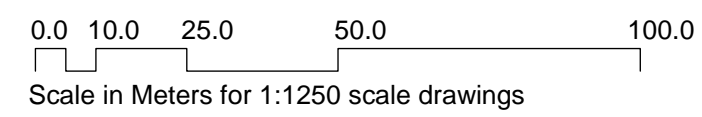
Do not scale from this drawing. All dimensions should be checked on site for accuracy.



--- Site Boundary

--- Adjoining Site in Ownership of Applicant

01 LOCATION PLAN
A0090 EXISTING 1:1250



This is a detailed street map of a section of London, specifically the area around Southampton Place and High Holborn. The map shows the following features:

- Streets:** Southampton Place, High Holborn, Southampton Row, and Barter Street are labeled.
- Buildings:** Numerous building footprints are shown, including a large building complex in the center and smaller structures along the streets.
- Highlighted Area:** A specific area is outlined with a red dashed line, and a smaller section within it is outlined with a blue dashed line. A black arrow points to a location on Southampton Place, near the intersection with the highlighted area.
- Other Labels:** "Sicilian House" is labeled near the top right. "New Development detail not shown" is written in the lower right quadrant. Various numbers (e.g., 5, 6, 7, 8, 9, 10, 13, 18, 126, 127, 129, 130, 208, 210, 212, 215 to 222, 3 to 9) are placed along the streets, likely indicating house numbers or plot identifiers.

A: Site location plan scale changed from 1:1000 to 1:1250 at request of Camden Borough Council. 04.11.09 - MC

Revisions

Canaway Fleming Architects Ltd
The Dutch House
307-308 High Holborn
London WC1V 7LL
T: 020 7430 2262
F: 020 7430 2274
E: mailbox@canawayfleming.com

Project 8 Southampton Place, London.

Date October 2009 Scale 1:1250 @ A1
1:200 @ A1

© Copyright Canaway Fleming Architects Ltd.

Project 058	Origin A	No. 0090	Revision A
Status PLANNING	Drawn LH		Checked MC

02 SITE PLAN
A0090 EXISTING 1:200

