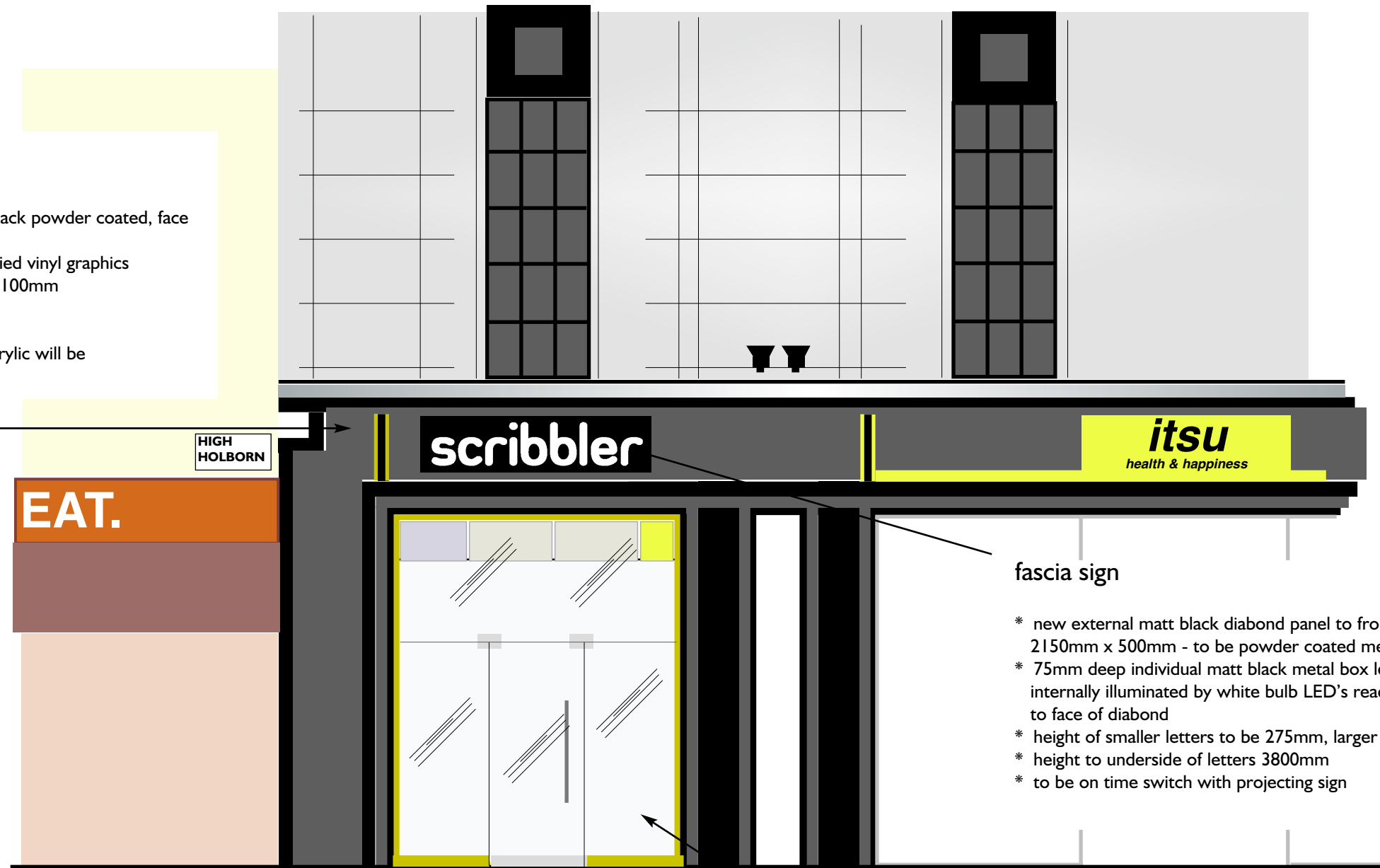


- * 800mm x 800mm x 100mm deep
- * to be powder coated metal frame, matt black powder coated, face fixed to existing stone fascia
- * double sided with acrylic panels, with applied vinyl graphics
- * height of letters reading 'scribbler' to be 100mm
- * height to underside of sign 3700mm
- * to be on time switch with fascia sign
- * only the words 'scribbler' in white opal acrylic will be internally illuminated to both faces

A diagram of a square panel. To the left of the square is a vertical dimension line with tick marks at the top and bottom, labeled "800mm". Below the square is a horizontal dimension line with tick marks at the left and right, labeled "800mm". The square itself is light blue and contains a faint, diagonal watermark that reads "scribble" over a stylized "sc".



shopfront

- * glass shopfront entrance screen set in powder coated aluminium frame incorporating centre 900mm wide x 2100mm high single leaf 12mm toughened safety glass door with 2 x equal 12mm s/glass side panels with 1 x 12mm s/glass header to full width
- * colour of frame to match pantone 397u
- * framework to base of shopfront to be 100mm high bottom rail
- * all door fittings to be "dorma ' or similar in satin finish s/steel 100mm locking bottom rail, top pivot patch, top corner lock patch and standard 25mm dia. 720mm long back to back pull handles
- * all glass 12mm clear thermally toughened safety glass to BS EN121150-2; 2004 glass in buildings

11 march 2010 - confirmation that scribbler only will be internally illuminated on the projecting sign



SITE ADDRESS		SCRIBBLER - 236A HIGH HOLBORN WC1V 7DN			
DRAWING NAME		proposed shopfront		SCALE 1 : 50	
DRAWING NUMBER		005		REVISION	
				A	
JOB NUMBER		9532 / 10		DATE January 2010	
ISHERWOOD design company					
3 Madrid Road London SW13 9PF email-ipddesign@aol.com					
telephone 020 8748 7889 fax 020 8412 0131 mobile 07762 547363					