

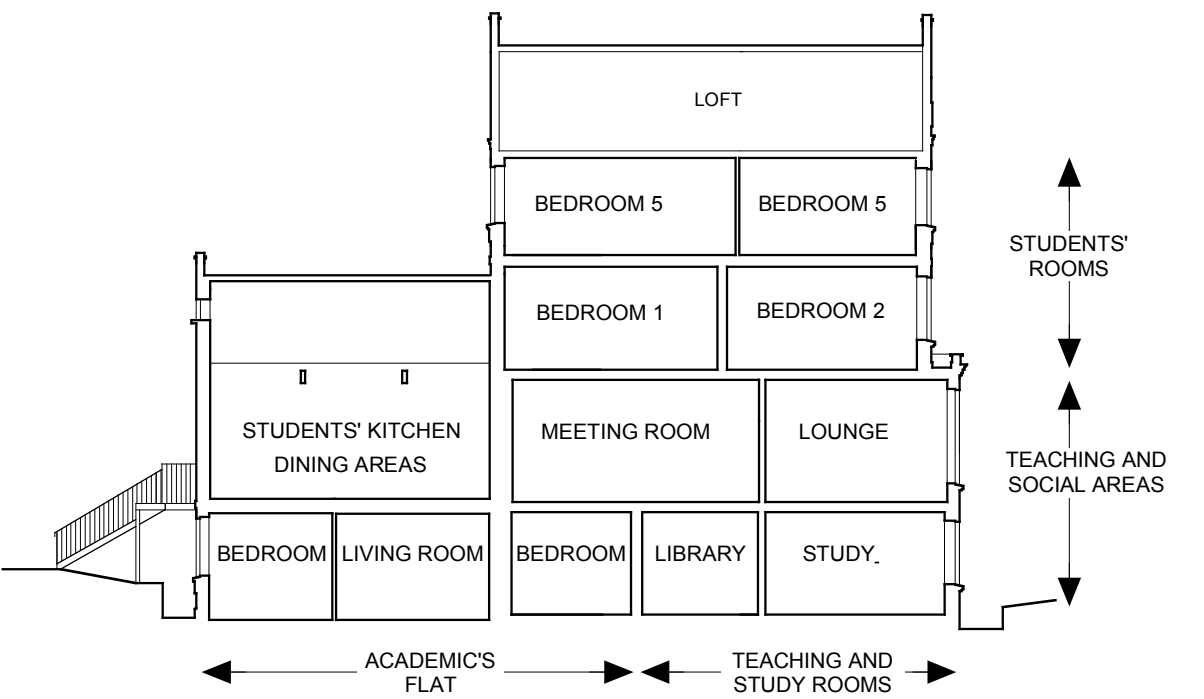
Worrell House
36 Steele's Road - London NW3



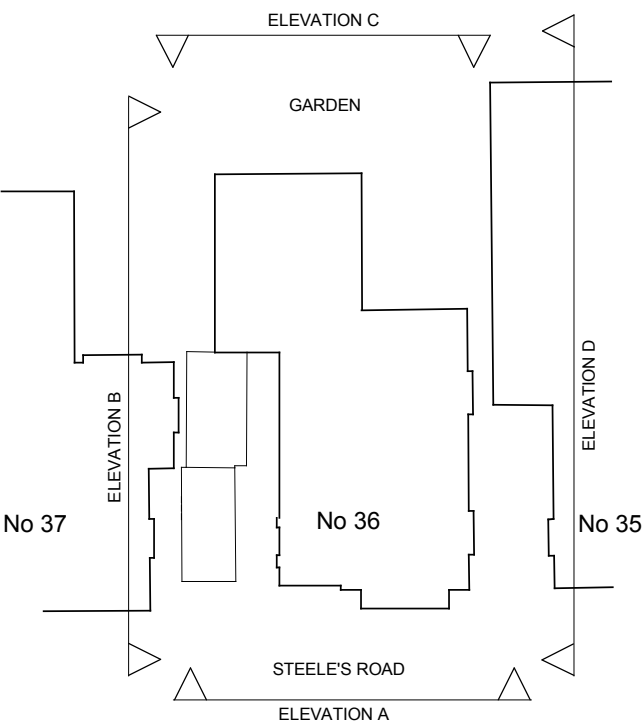
ELEVATION A
PROPOSED no change



ELEVATION B PROPOSED



BUILDING ORGANISATION - PROPOSED



ELEVATION LAYOUT

REVISION A - 8th April 2010

Amendment following planning officer's site visit on 8th April - proposed new window to bathroom omitted - existing door/fanlight retained.

Brod Wight
ARCHITECTS

TEL 020 7722 0810 FAX 020 7722 0939 E MAIL office@brodwight.co.uk WEB www.brodwight.co.uk
75 Haverstock Hill London NW3 4SL

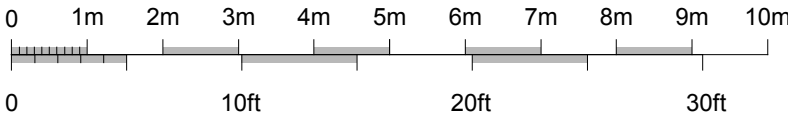
WAKE FOREST UNIVERSITY - PROPOSALS
WORRELL HOUSE - 36 STEELE'S ROAD - LONDON NW3
ELEVATIONS - 1

989-AP1-04A

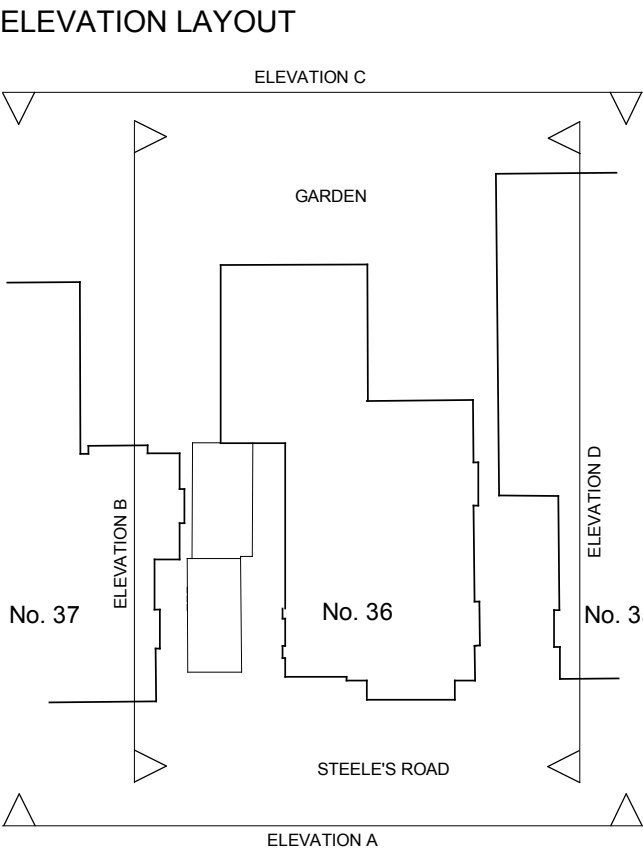
Date January 2010 Scale 1:100 (A2) This drawing is copyright

Revisions

1:100 at A2 SIZE
1:50 at A0 SIZE

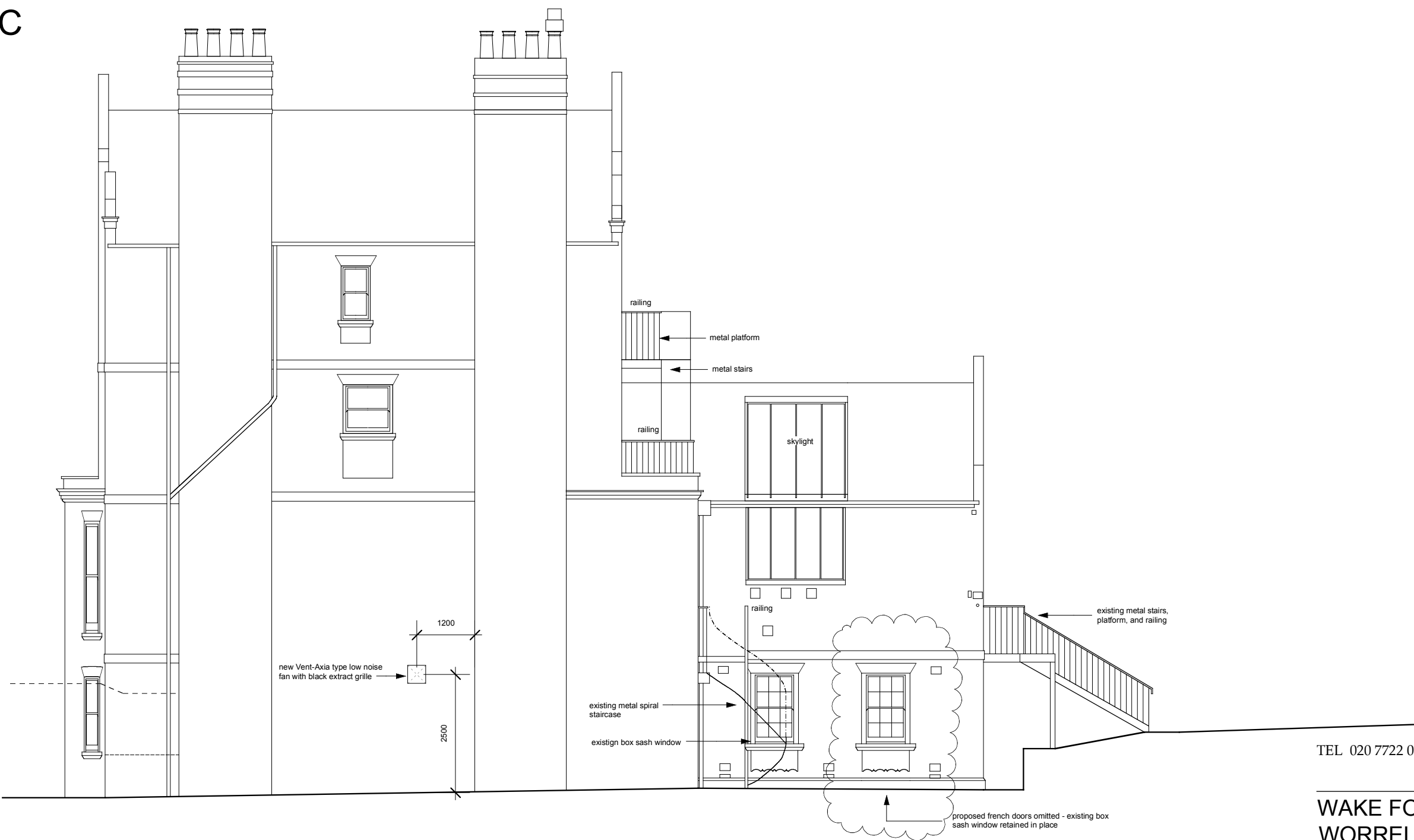


Worrell House
36 Steele's Road - London NW3



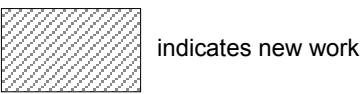
DATUM 48.00m A.O.D.

ELEVATION C
PROPOSED

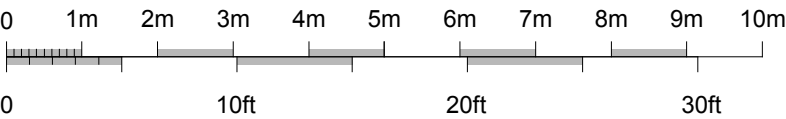


DATUM 48.00m A.O.D.

ELEVATION D PROPOSED



1:100 at A2 SIZE
1:50 at A0 SIZE



REVISION B - 8th April 2010
Amendment following planning officer's site visit on 8th April - proposed french doors to bedroom 1 omitted - existing box sash window retained.

REVISION A - 17th February 2010
Vent fan to library shown on Elevation D

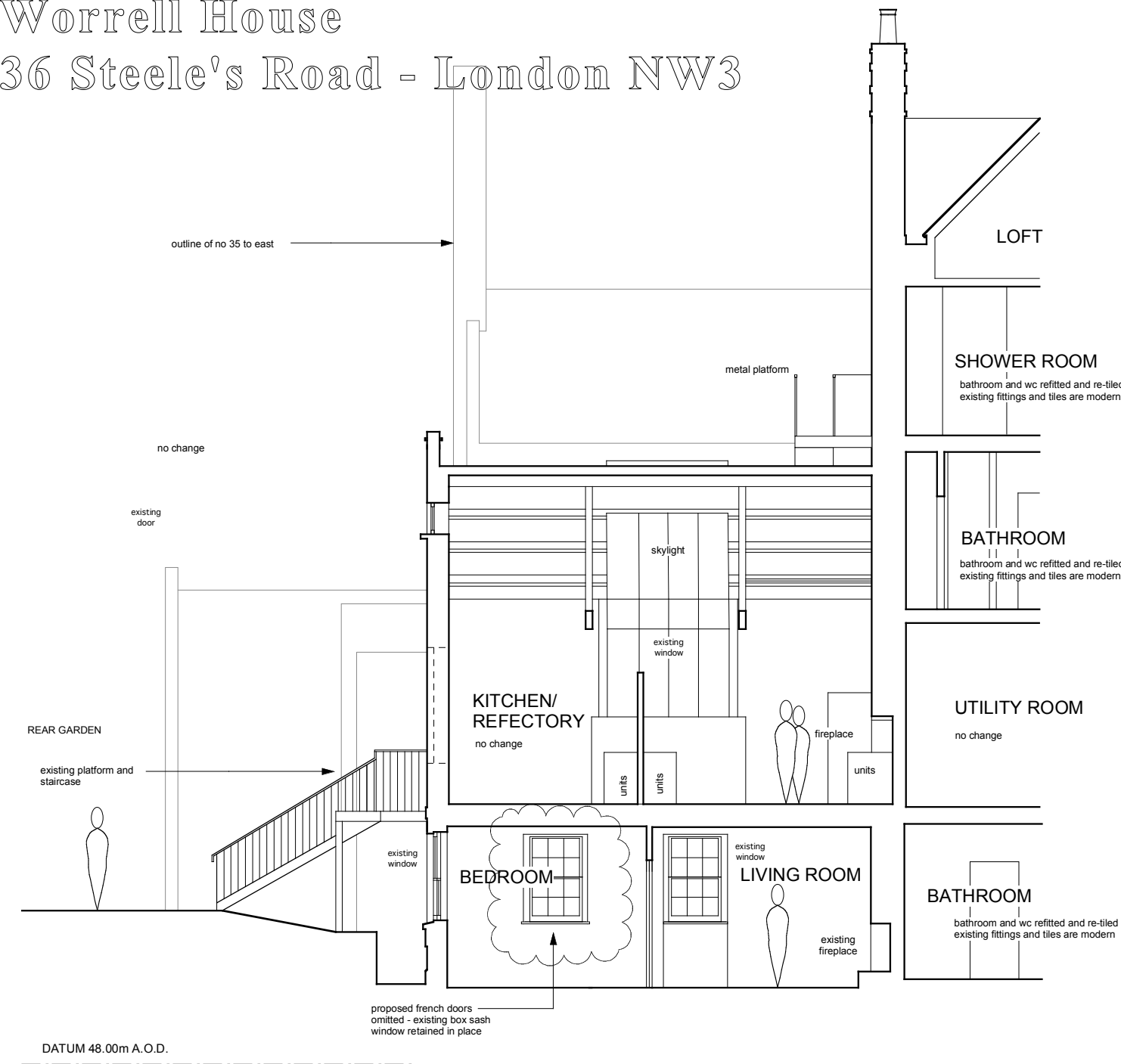
Brod Wight
ARCHITECTS

TEL 020 7722 0810 FAX 020 7722 0939 E MAIL office@brodwight.co.uk WEB www.brodwight.co.uk
75 Haverstock Hill London NW3 4SL

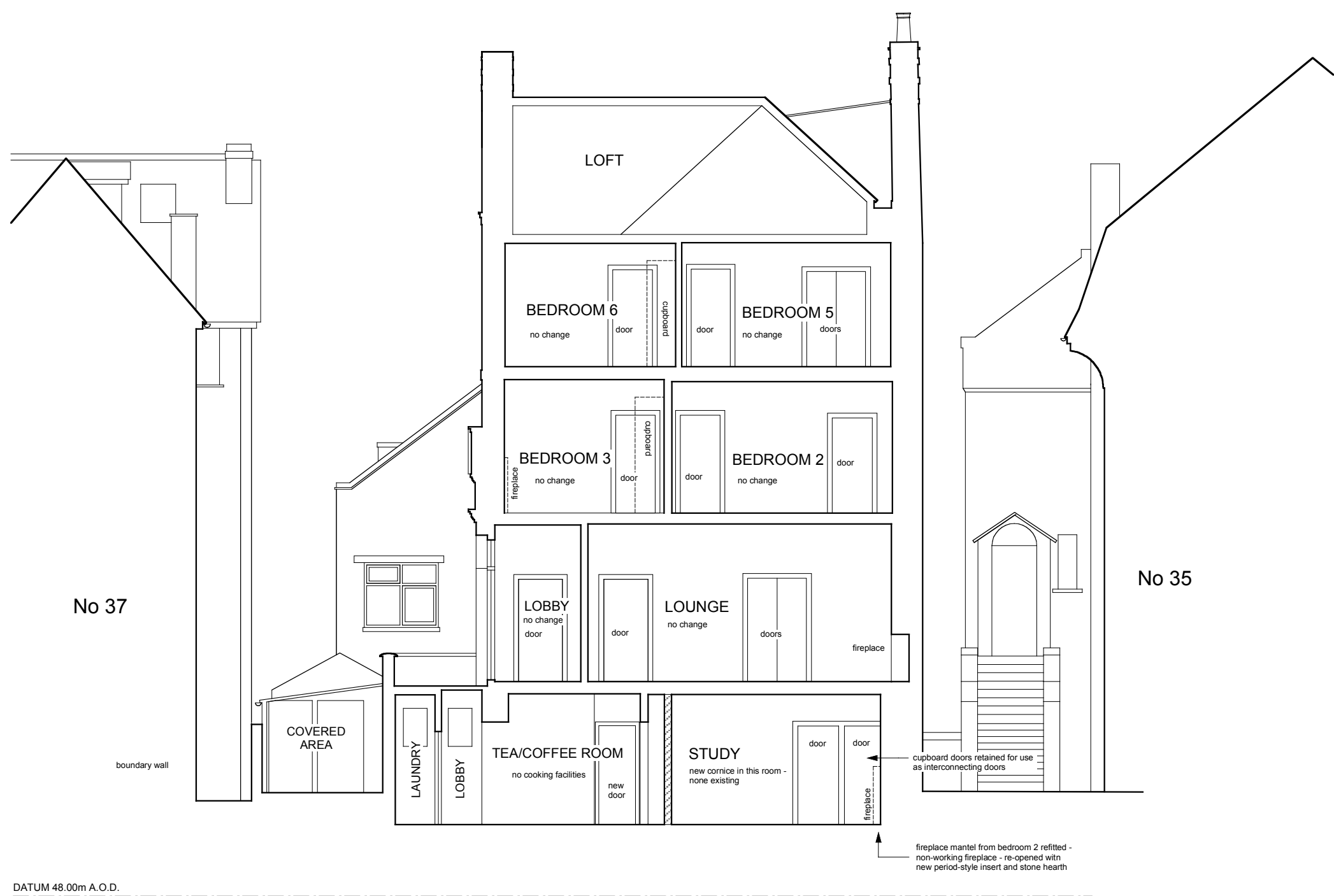
WAKE FOREST UNIVERSITY - PROPOSALS
WORRELL HOUSE - 36 STEELE'S ROAD - LONDON NW3
ELEVATIONS - 2 **989-AP1-05B**

Date January 2010 Scale 1:100 (A2) This drawing is copyright Revisions

Worrell House
36 Steele's Road - London NW3

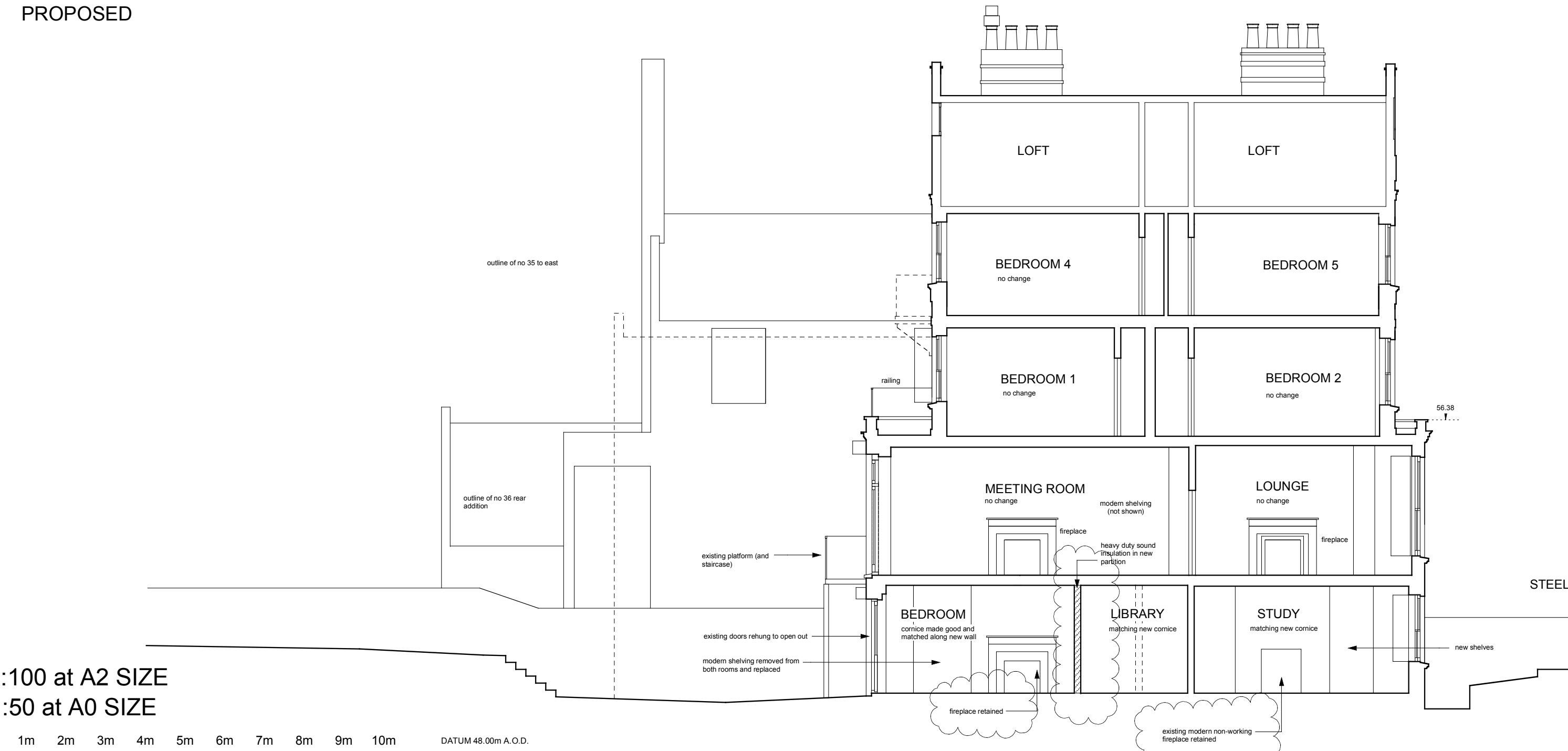
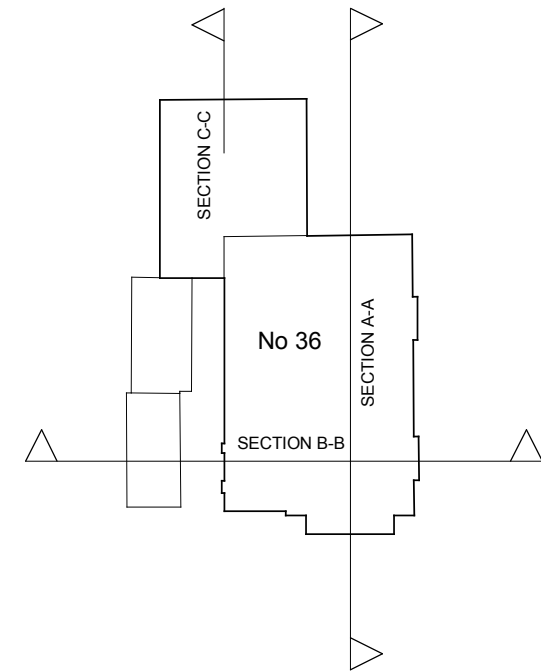


SECTION C-C
PROPOSED



SECTION B-B PROPOSED

SECTION LAYOUT



SECTION A-A PROPOSED

REVISION A - 8th April 2010

- Amendments following planning officer's site visit on 8th April:
1. Partition between bedroom 2 relocated and bedroom 2 fireplace retained in place.
 2. Modern fireplace in study retained in place.
 3. Proposed french doors to bedroom 1 omitted - existing box sash window retained.

Brod Wight
ARCHITECTS

TEL 020 7722 0810 FAX 020 7722 0939 E MAIL office@brodwight.co.uk WEB www.brodwight.co.uk
75 Haverstock Hill London NW3 4SL

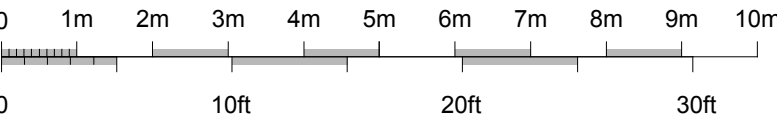
WAKE FOREST UNIVERSITY - PROPOSALS
WORRELL HOUSE - 36 STEEL'S ROAD - LONDON NW3
SECTIONS

989-AP1-06A

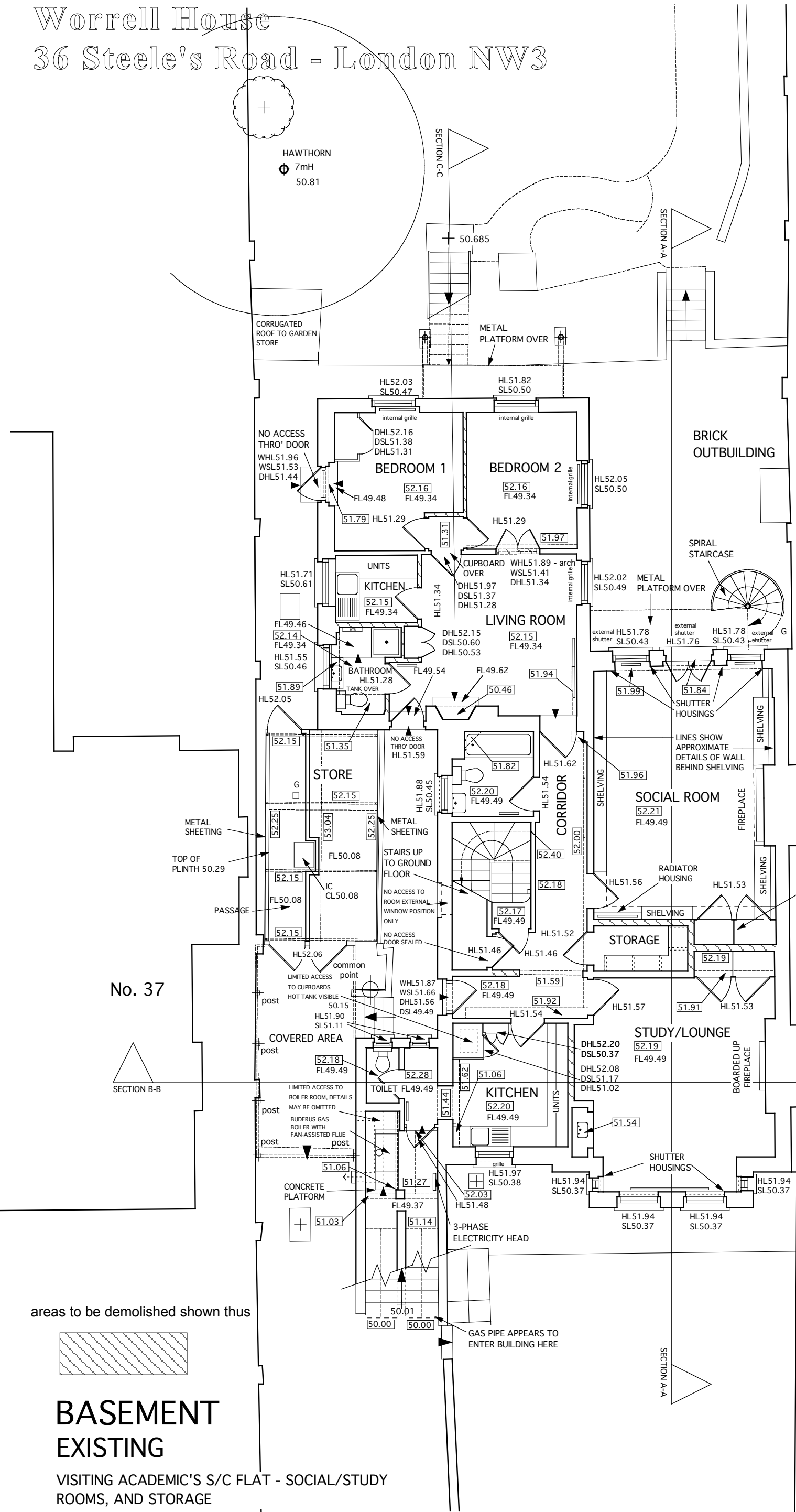
Date January 2010 Scale 1:100 (A2) This drawing is copyright

Revisions

1:100 at A2 SIZE
1:50 at A0 SIZE

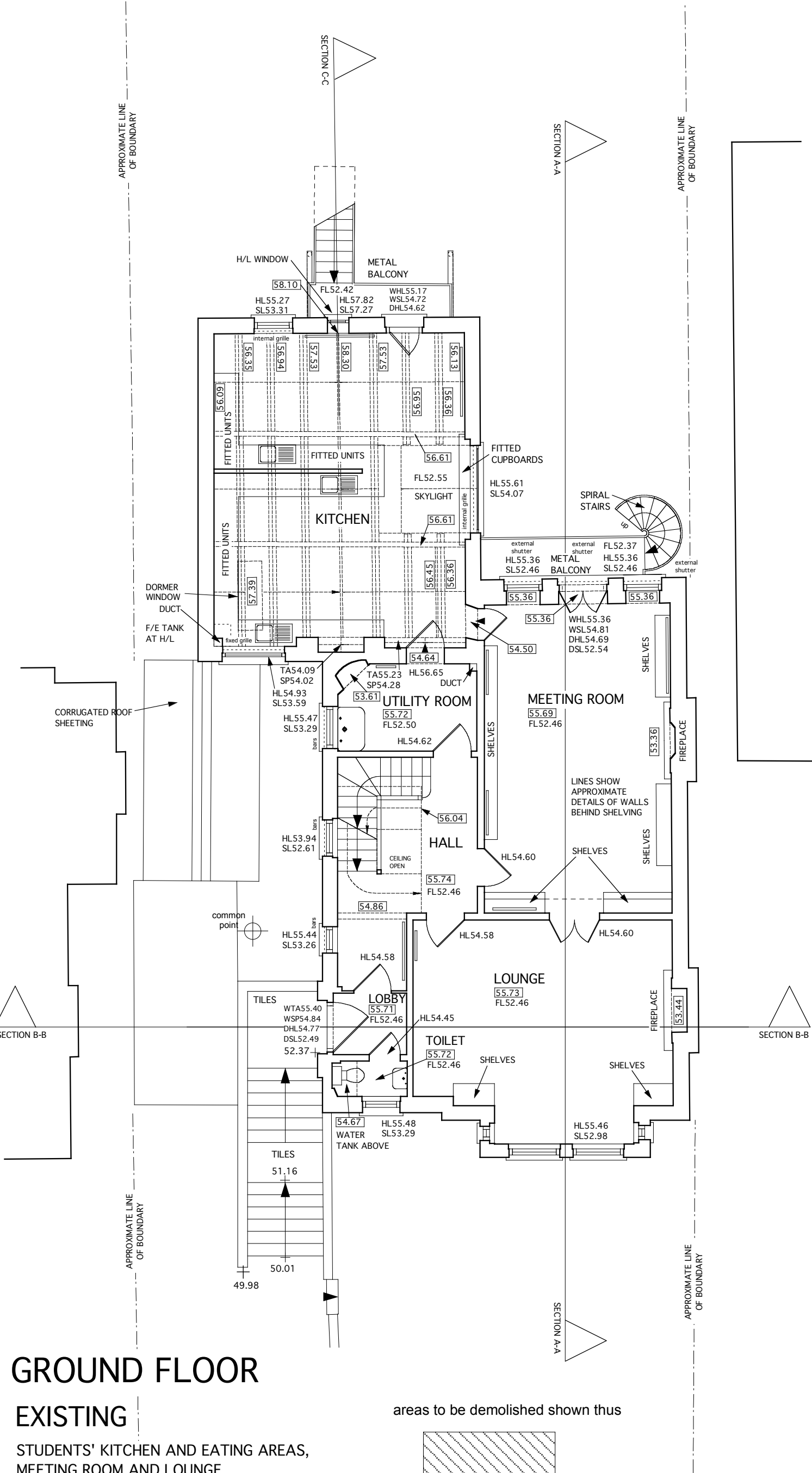


Worrell House
36 Steele's Road - London NW3



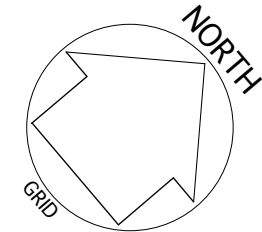
GROUND FLOOR EXISTING

STUDENTS' KITCHEN AND EATING AREAS, MEETING ROOM AND LOUNGE



REVISION A - 8th April 2010

Amendment following planning officer's site visit on 8th April - social room fireplace and chimney breast shown.



- NOTES:-
1. The accuracy and content of this drawing are dependent on the original specification and EDI should be consulted before use of other scales or use in CAD form.
 2. Where underground services are shown, all reasonable care has been taken within the spirit of the original specification and requirement. Before use of this information the user should consult EDI and satisfy themselves of the completeness and accuracy of such detail before undertaking any works. Due to the nature of this work and the limitations imposed by ground conditions and the detection equipment no guarantee can be given that all services have been recorded.
 3. All reasonable care has been taken in the survey detail represented on this drawing but any discrepancies must be reported to EDI immediately. Our aim is to produce the best possible results within the specification and cost constraints of our clients. Any comments are most welcome.
 4. All levels and co-ordinates are related to the datums described. Levels shown at kerbs are channel level unless stated.
 5. Building has been orientated square to the page and drawing moved to an arbitrary position.

LEGEND		Building Level Details
Features:	V Vent	D Door
AB Air Brick	VP Vent Pipe	EL Eaves cLevel
BD Bollard	WM Water Meter	FL Floor Level
BS Basin	WO Wash Out	FRL Flat Roof Level
CL Cover Level	WP Waste Pipe	HL Head Level
DPC Damp-proof Course		PPL Parapet Level
DCH Drainage Channel	Finishes:	RL Ridge Level
ER Earth Rod	B Brickwork	SL Sill Level
G Gully	BB Breeze Block	SP Springer of Arch
GV Gas Valve	C Concrete	TA Top of Arch
IC Inspection Cover	CLT Ceiling Tiles	W Window
IL Invert Level	CP Carpet	
JBX Junction Box	CPT Carpet Tiles	12.34 Ceiling/Beam Soffit
PM Parking Meter	CR Concrete Render	
RAD Radiator	CT Ceramic Tiles	
RE Rodding Eye	FT Floor Tiles	
RNP Road Name Plate	HBD Hardboard	
RSJ Rolled Steel Joist	L Linoleum	
RWP Rain Water Pipe	P Plaster	
SD Service Duct	S Steel work	
SV Stop Valve	T Timber	
UTL Unable to lift	VT Vinyl Tiles	


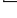






EDI SURVEYS LTD

163-165 RANELAGH ROAD - IPSWICH - SUFFOLK IP2 0AH

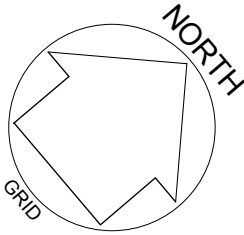
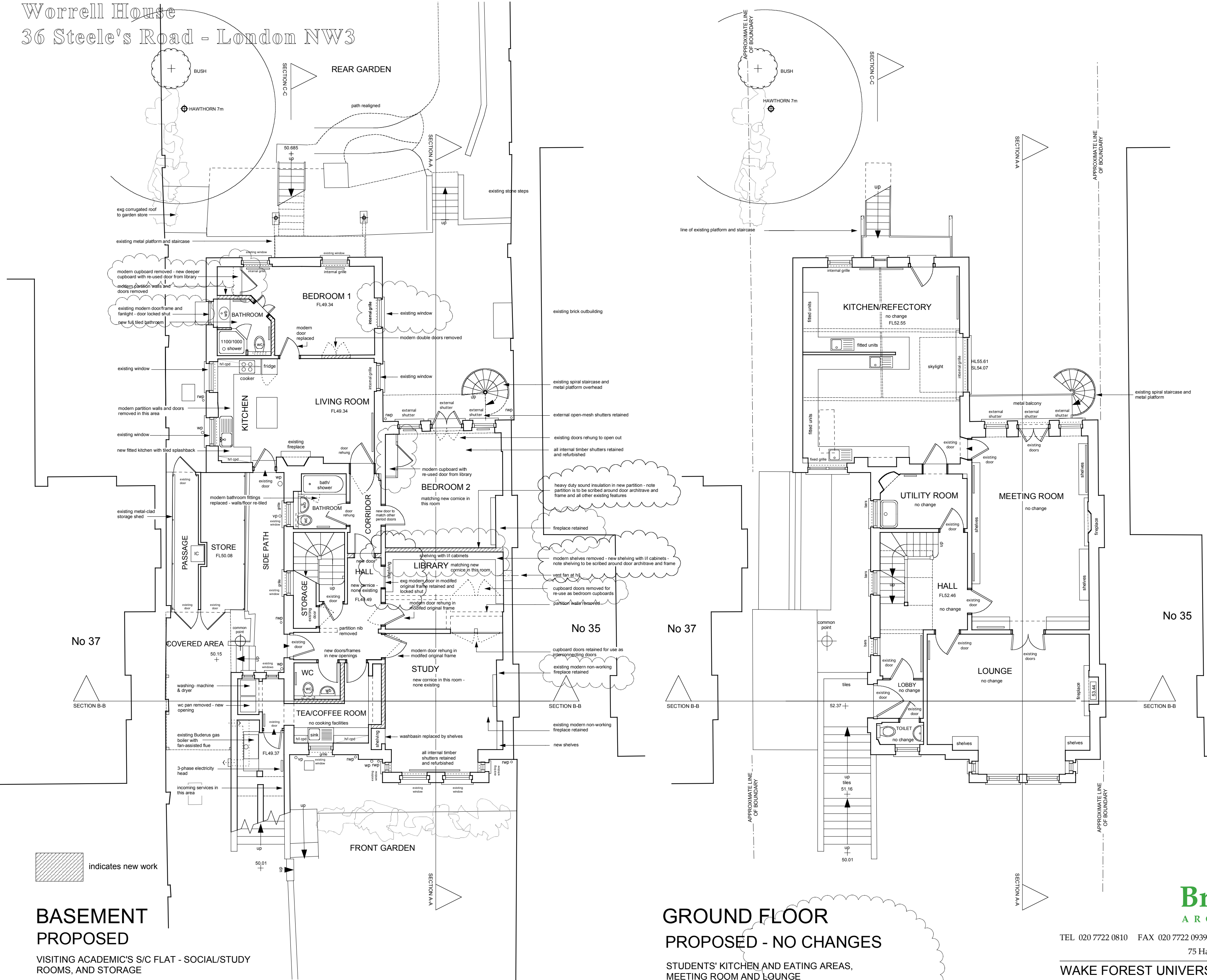
www.edisurveys.co.uk Tel : (01473) 211222 Fax: (01473) 221660

Email: enquiry@edisurveys.co.uk

ISO 9001 REGISTERED FIRM

	PROJECT	Job No.	11308/F/01-02
	WORRELL HOUSE 36 STEELE'S ROAD LONDON NW3 4RG	Scale	1:100 @ A2
		Surveyor	M.Wiskin
		Date	May 2009
		Checked	GMP
	CLIENT BROD WIGHT ARCHITECTS 75 HAVERSTOCK HILL HAMPSTEAD LONDON NW3 4SL	SURVEY CONTROL NOTES: The horizontal control of this survey is based on Ordnance Survey grid as translated from GPS coordinates using the OSTN02 transformation supplied by the OS. We have applied a reverse scale factor to maintain true ground distances, based on station STGPS1. The vertical control of this survey is based on OS datum as translated from GPS coordinates using the OSGM02 transformation as supplied by the OS. This may differ from the existing OS benchmarks in the area which should be disregarded; all levels should be taken from EDI survey stations.	
			
			
			
			
	for		
	WAKE FOREST UNIVERSITY		
	BASEMENT AND GROUND FLOOR PLANS		
	DRAWING No.		
	989-AP1-S02A		

Worrell House
36 Steele's Road - London NW3



- REVISION B - 13th April 2010**
- Amendments following further discussion with planning officer:
1. New partition between bedroom 2 and library noted as scribed around retained door, frame, and architrave, and other existing features.
 2. Existing library door and frame/architrave retained (and locked shut).
- REVISION A - 8th April 2010**
- Amendments following planning officer's site visit on 8th April:
1. Partition between bedroom 2 relocated and bedroom 2 fireplace retained in place.
 2. Modern fireplace in study retained in place.
 3. Cupboard doors in library re-used as doors to new cupboards in bedrooms 1 and 2.
 4. Proposed french doors to bedroom 1 omitted - existing box sash window retained.
 5. Proposed new window to bathroom omitted - existing door/fanlight retained.

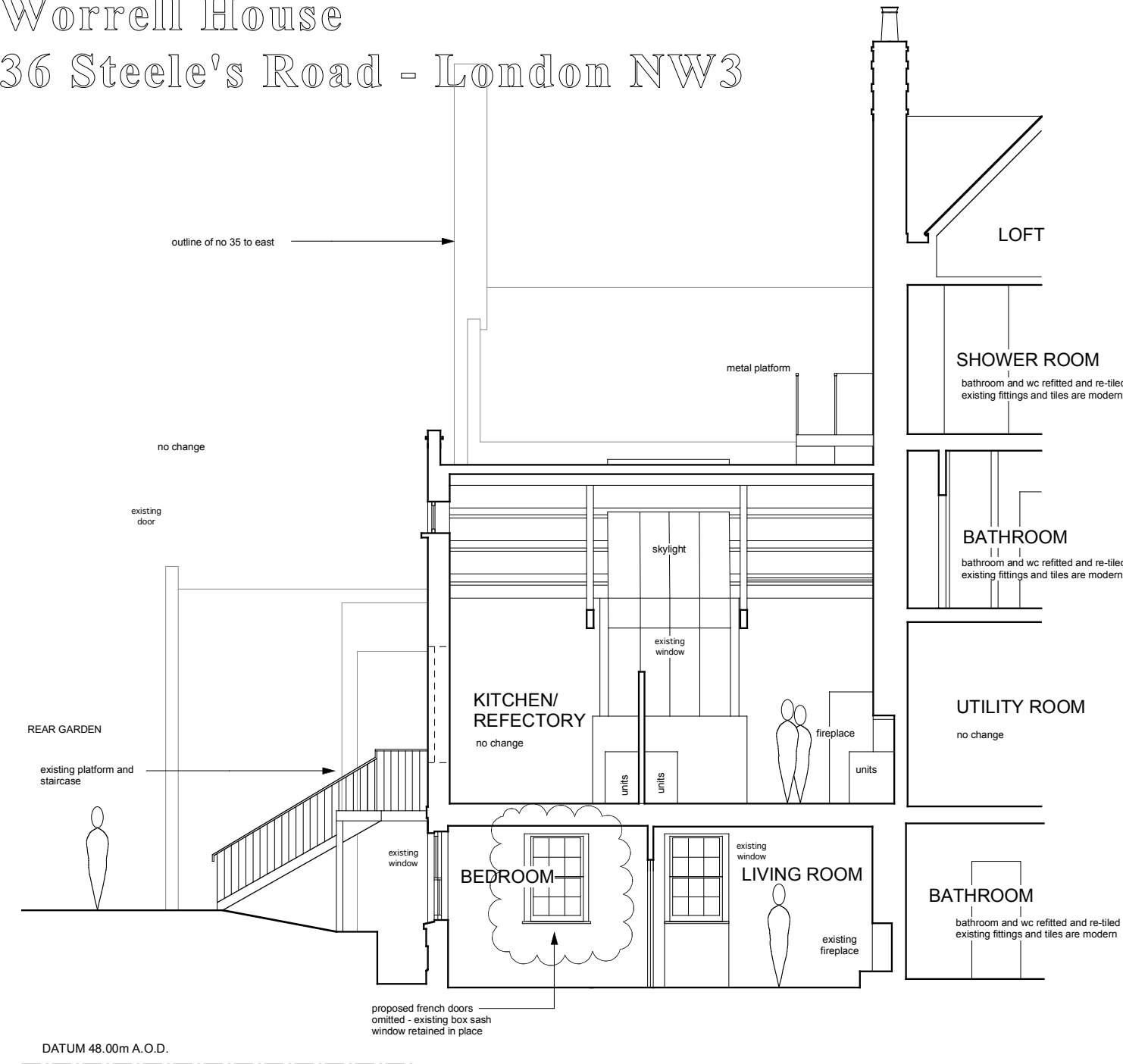
Brod Wight
ARCHITECTS

TEL 020 7722 0810 FAX 020 7722 0939 E MAIL office@brodwight.co.uk WEB www.brodwight.co.uk
75 Haverstock Hill London NW3 4SL

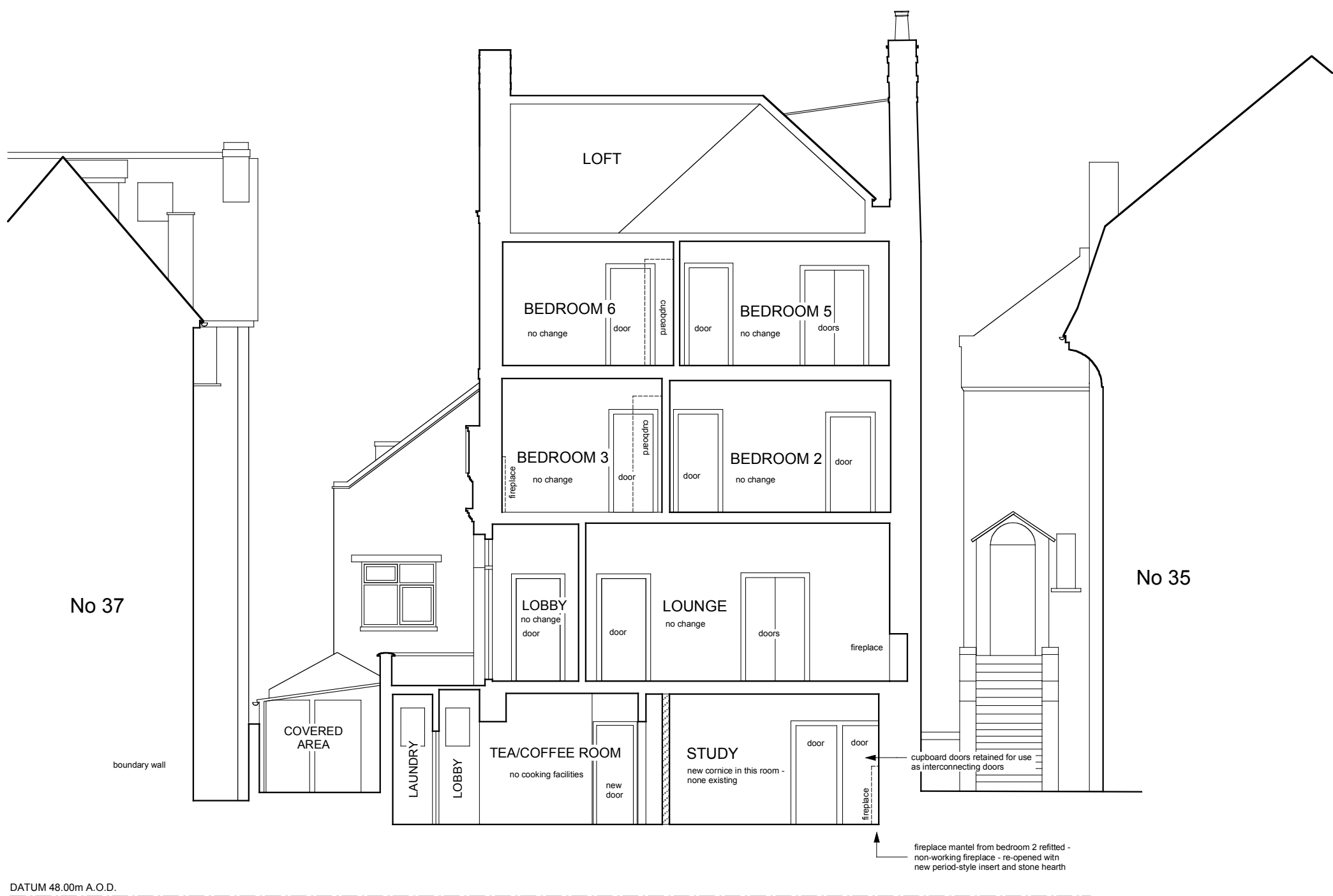
WAKE FOREST UNIVERSITY - PROPOSALS
WORRELL HOUSE - 36 STEELE'S ROAD - LONDON NW3
BASEMENT AND GROUND FLOOR PLANS
989-AP1-02B

Date January 2010 Scale 1:100 (A2) This drawing is copyright Revisions

Worrell House
36 Steele's Road - London NW3

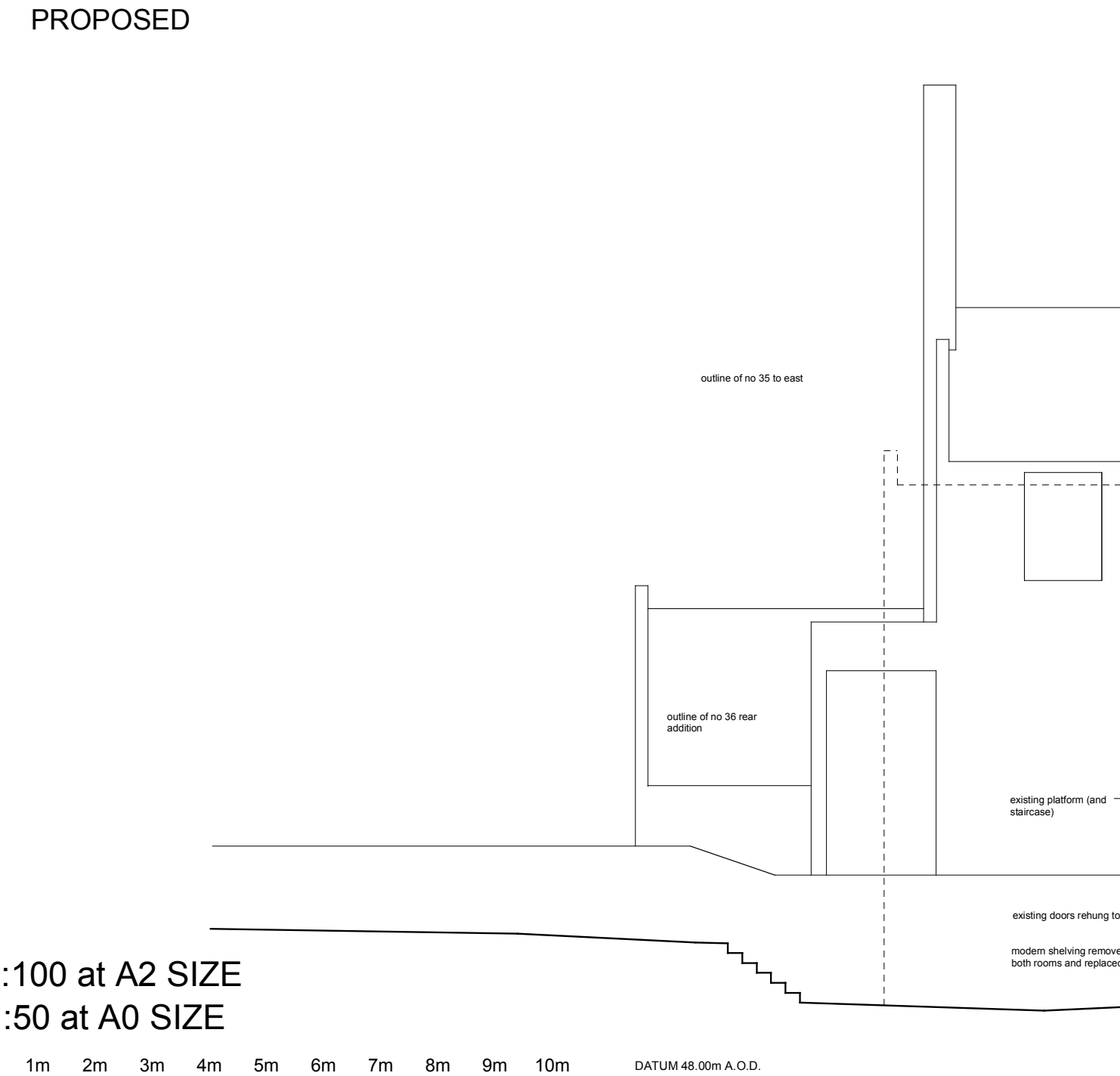
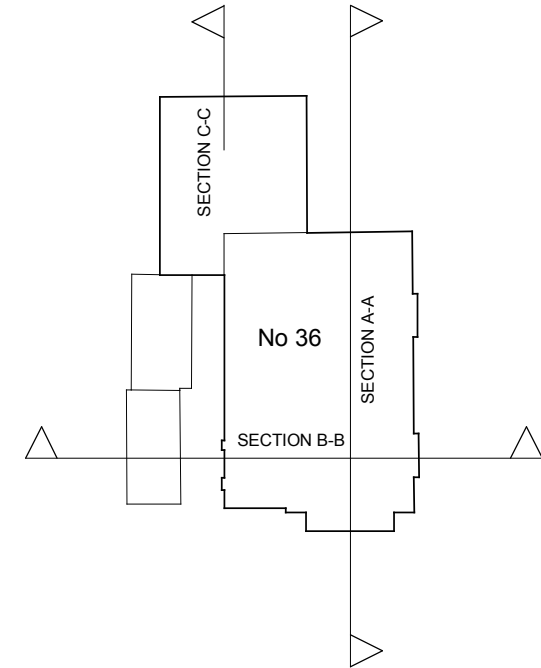


SECTION C-C
PROPOSED

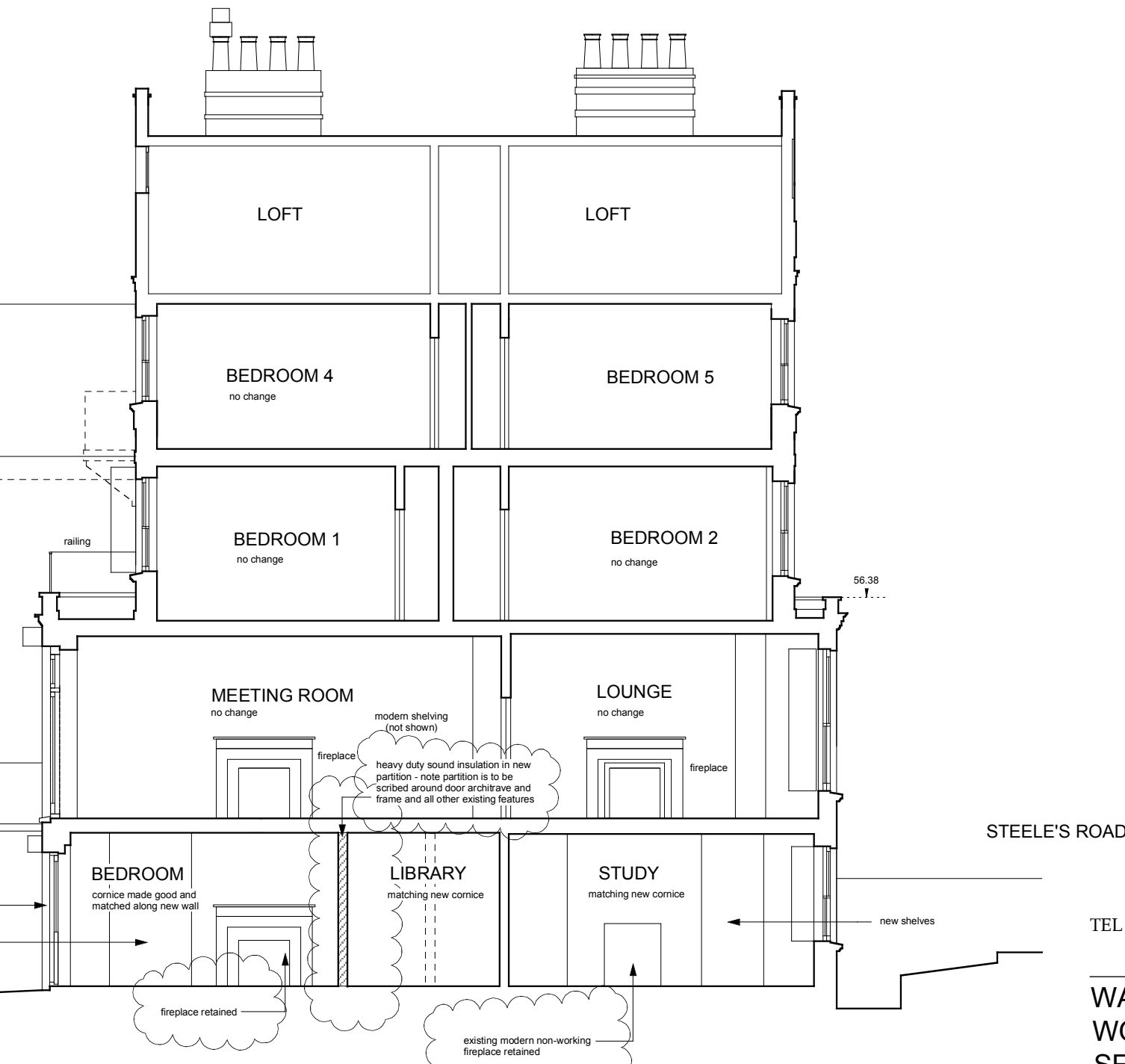


SECTION B-B PROPOSED

SECTION LAYOUT



SECTION A-A PROPOSED



REVISION B - 13th April 2010

Amendments following further discussion with planning officer:
1. New partition between bedroom 2 and library noted as scribed around retained door, frame, and architrave, and other existing features.

REVISION A - 8th April 2010

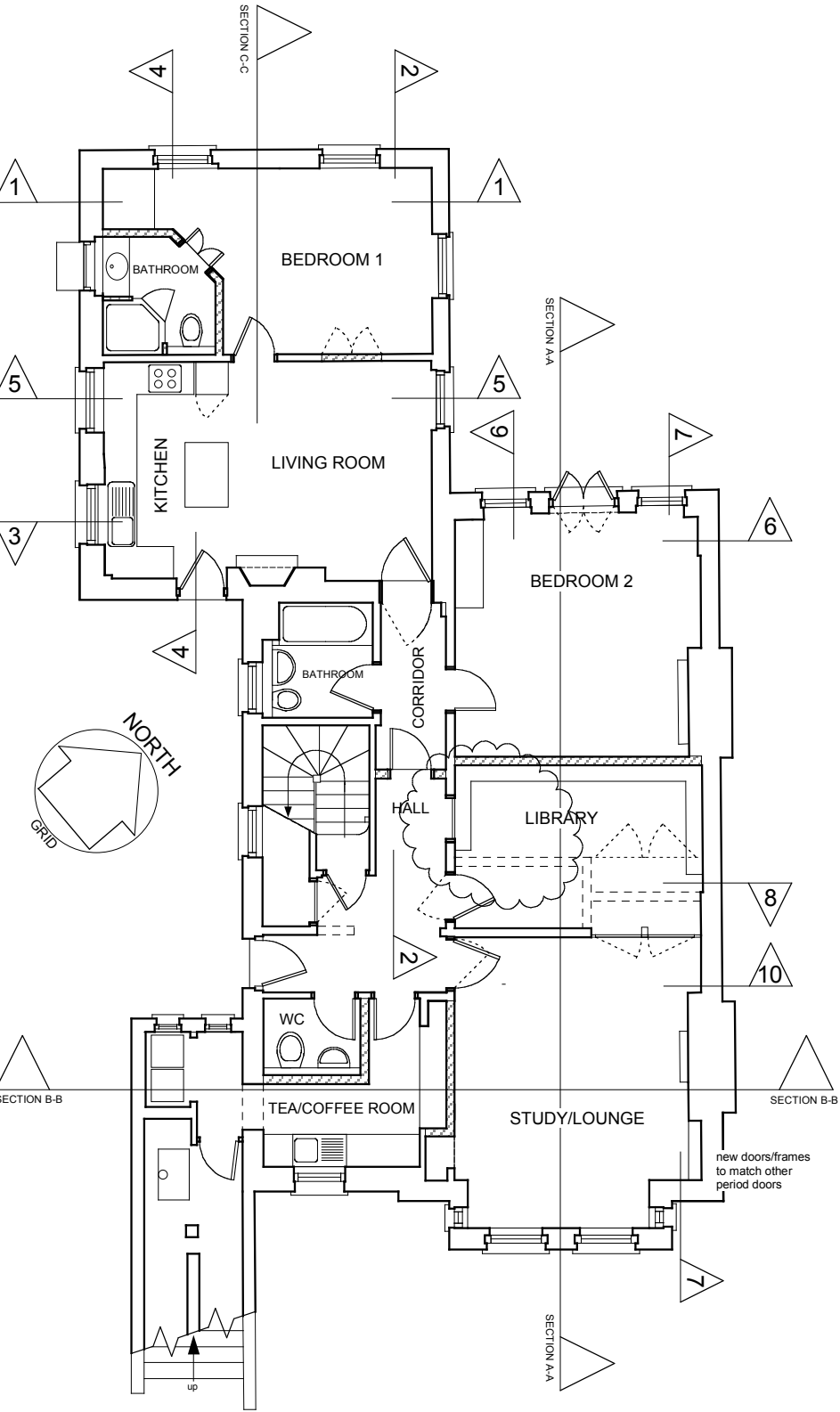
Amendments following planning officer's site visit on 8th April:
1. Partition between bedroom 2 relocated and bedroom 2 fireplace retained in place.
2. Modern fireplace in study retained in place.
3. Proposed french doors to bedroom 1 omitted - existing box sash window retained.

Brod Wight
ARCHITECTS

TEL 020 7722 0810 FAX 020 7722 0939 E MAIL office@brodwight.co.uk WEB www.brodwight.co.uk
75 Haverstock Hill London NW3 4SL

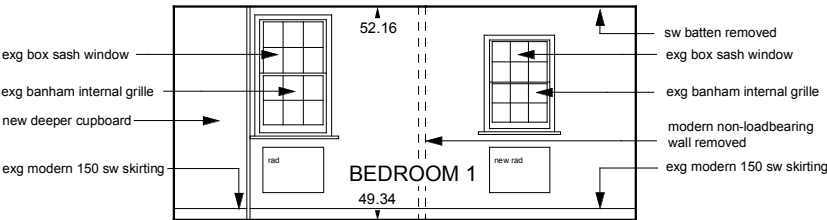
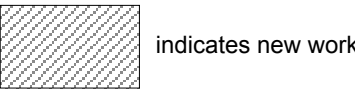
WAKE FOREST UNIVERSITY - PROPOSALS
WORRELL HOUSE - 36 STEELE'S ROAD - LONDON NW3
SECTIONS **989-AP1-06B**

Worrell House
36 Steele's Road - London NW3



PROPOSED BASEMENT - KEY PLAN

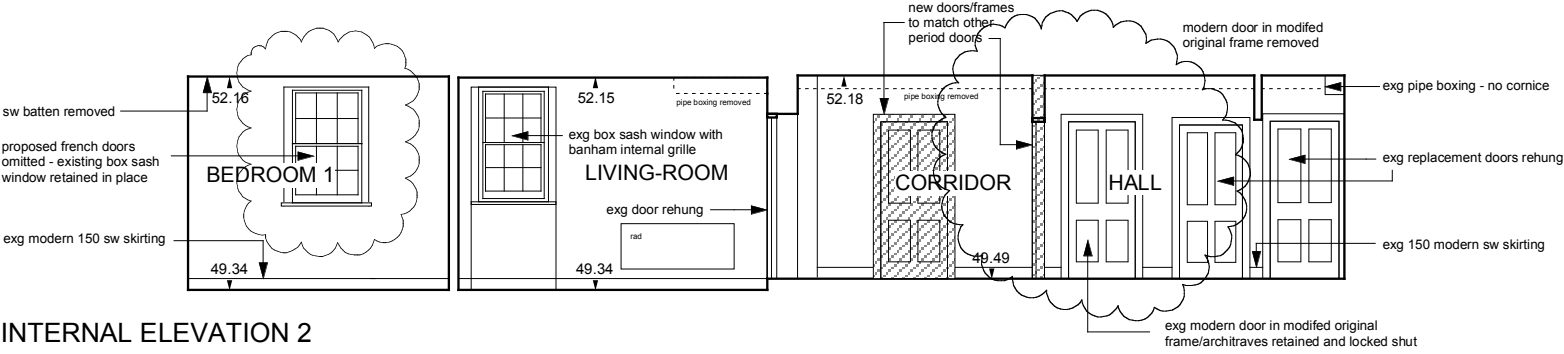
NOT TO SCALE - MAIN SECTIONS REFER TO DRAWING AP1-06



INTERNAL ELEVATION 1

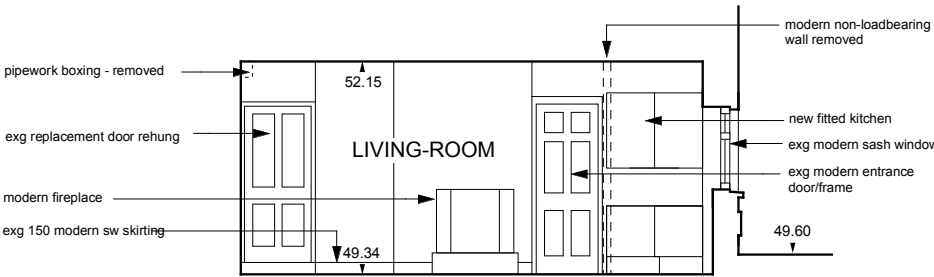
datum 48.00m

both existing windows eased, adjusted, and weatherstripped



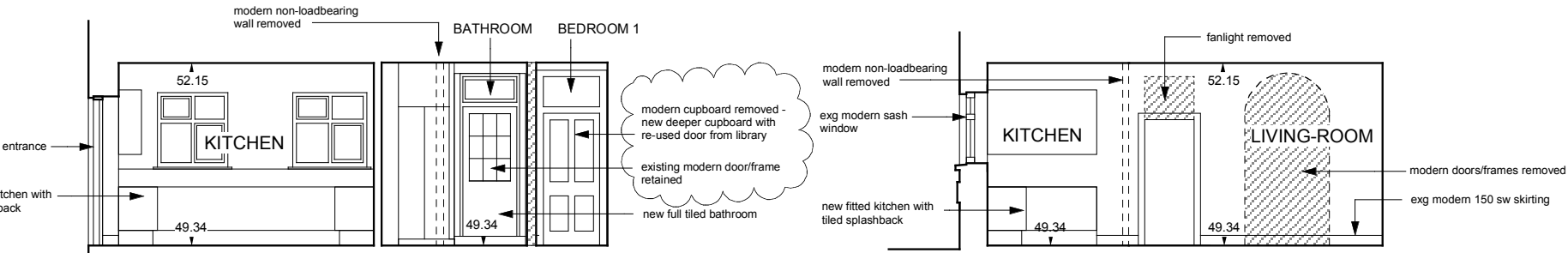
INTERNAL ELEVATION 2

datum 48.00m



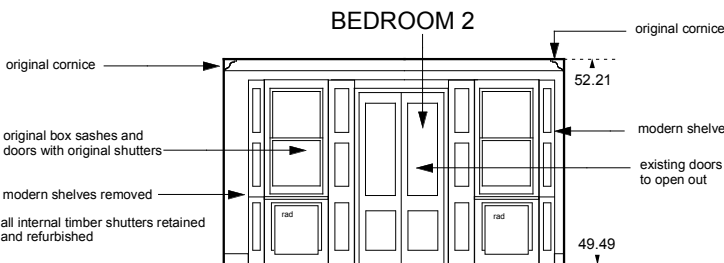
INTERNAL ELEVATION 3

datum 48.00m



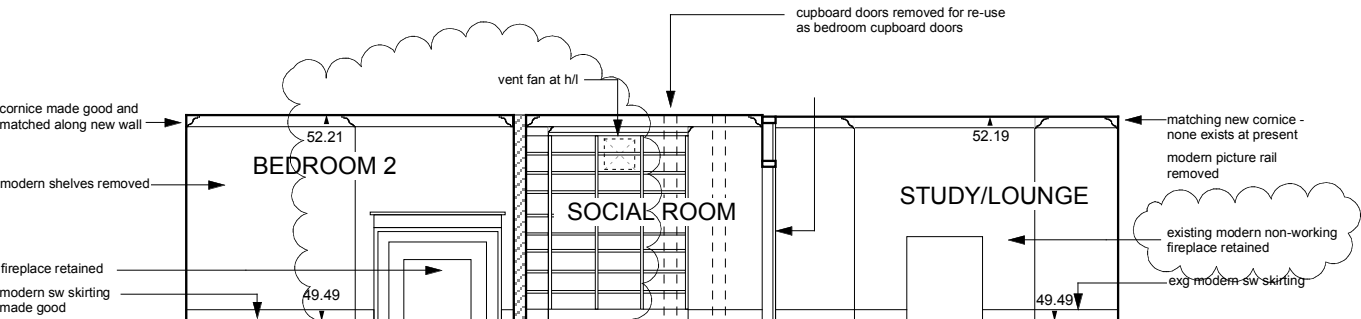
INTERNAL ELEVATION 4

INTERNAL ELEVATION 5

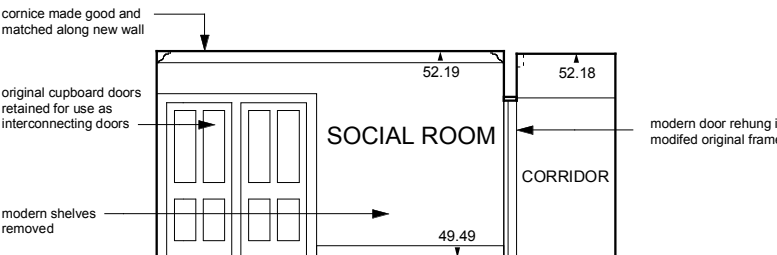


INTERNAL ELEVATION 6

datum 48.00m

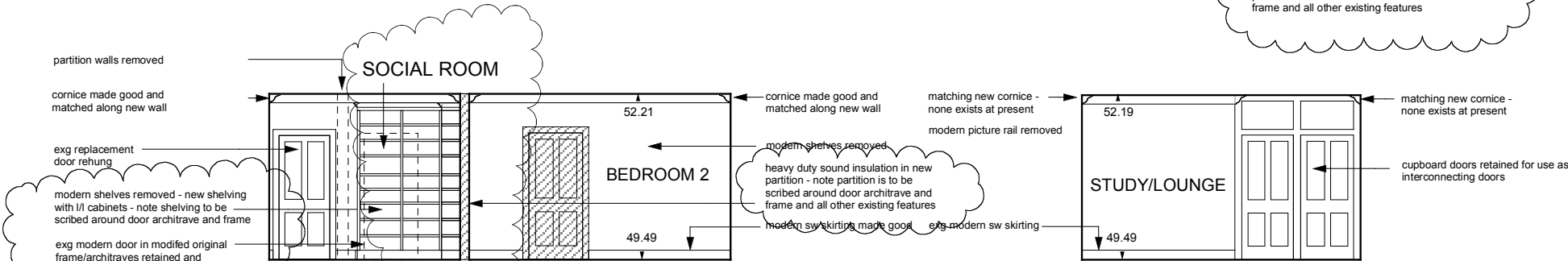


INTERNAL ELEVATION 7



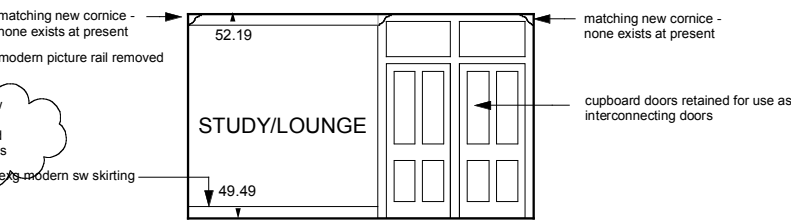
INTERNAL ELEVATION 8

datum 48.00m



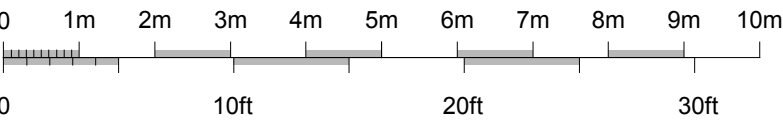
INTERNAL ELEVATION 9

datum 48.00m



INTERNAL ELEVATION 10

ELEVATIONS - 1:100 at A2 SIZE
 1:50 at A0 SIZE



REVISION B - 13th April 2010

- Amendments following further discussion with planning officer:
 1. New partition between bedroom 2 and library noted as scribed around retained door, frame, and architrave, and other existing features.
 2. Existing library door and frame/architrave retained (and locked shut).

REVISION A - 8th April 2010

- Amendments following planning officer's site visit on 8th April:
 1. Partition between bedroom 2 relocated and bedroom 2 fireplace retained in place.
 2. Modern fireplace in study retained in place.
 3. Cupboard doors in library re-used as doors to new cupboards in bedrooms 1 and 2.
 4. Proposed french doors to bedroom 1 omitted - existing box sash window retained.
 5. Proposed new window to bathroom omitted - existing door/fanlight retained.

Brod Wight
 ARCHITECTS

TEL 020 7722 0810 FAX 020 7722 0939 E MAIL office@brodwight.co.uk WEB www.brodwight.co.uk
 75 Haverstock Hill London NW3 4SL

WAKE FOREST UNIVERSITY - PROPOSALS
 WORRELL HOUSE - 36 STEELE'S ROAD - LONDON NW3
 INTERNAL ELEVATIONS - PROPOSED 989-AP1-08B

Date February 2010 Scale 1:100 (A2) This drawing is copyright Revisions