

WALLACE HOUSE, FITZROY PARK N6 6HT

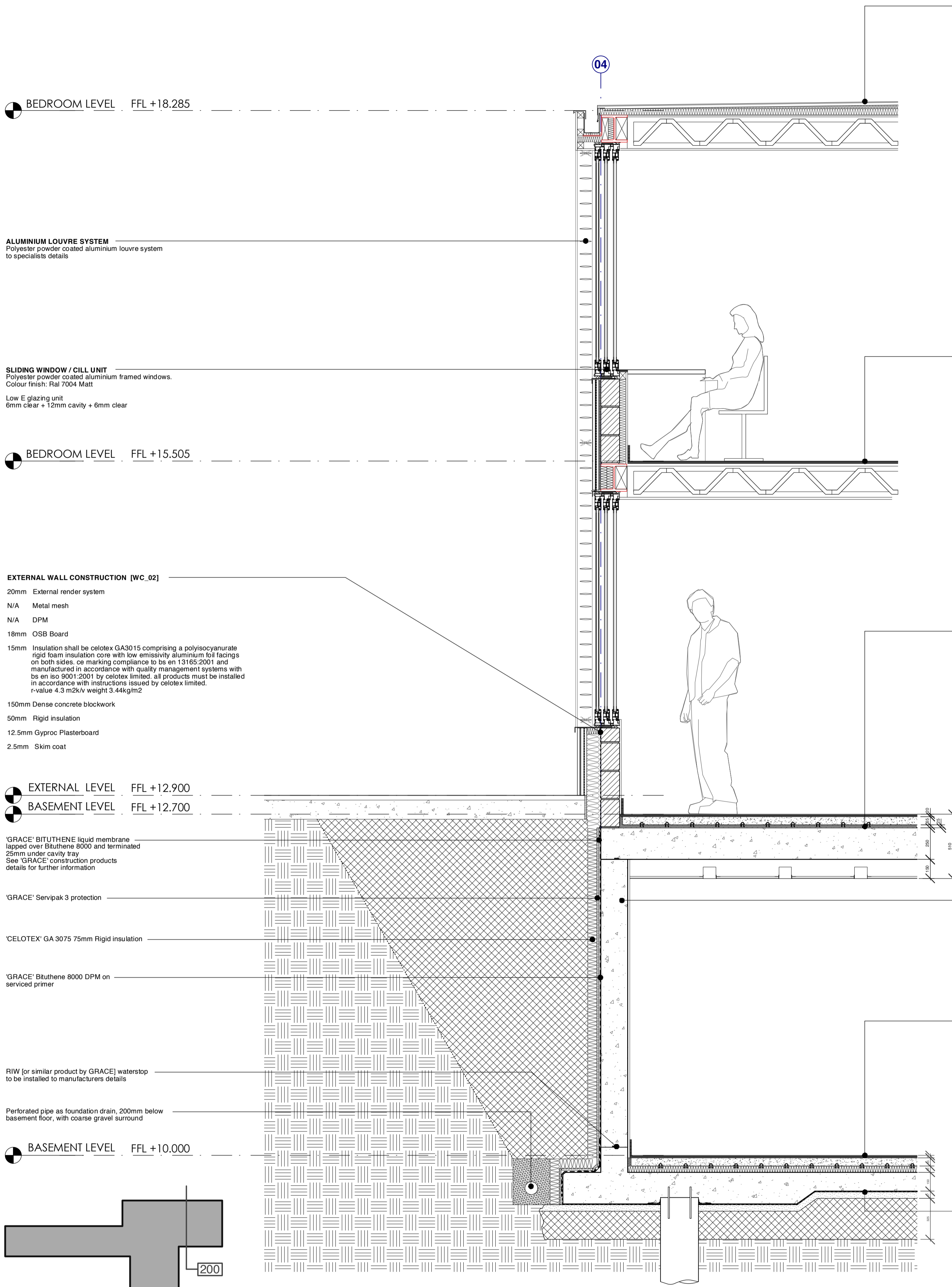
PLANNING APPLICATION

REVISED PROPOSALS TO PREVIOUSLY APPROVED.

AUGUST 2009



PROPOSED DETAILS



ROOF CONSTRUCTION [RC_01]
 5mm Single ply membrane system
 100mm Insulation cut to falls. Min 1 in 80 fall
 200mm Metal open web joists to Structural Engineers details
 12.5mm Gyproc Plasterboard
 2.5mm Skim coat

FIRST FLOOR CONSTRUCTION [FC_03]
 20mm Carpet or timber with appropriate underlay to use with underfloor with less than 1.5 tog.
 18mm Plyboard
 200mm Metal open web joists to Structural Engineers details
 12.5mm Gyproc Plasterboard
 2.5mm Skim coat

GROUND FLOOR CONSTRUCTION [FC_02]
 20mm Carpet or timber with appropriate underlay to use with underfloor with less than 1.5 tog.
 65mm Sand cement screed
 -- Wavin underfloor heating system for screed with pipes stapled to the rigid insulation to comprise of 16mm pipe laid at 200mm centres. Please refer to manufacturers details.
 25mm Insulation shall be Celotex FF3025L 25mm thick comprising a polyisocyanurate rigid foam insulation core with low emissivity aluminium foil facings on both sides. CE marking compliance to BS EN 13165-2:2001 and manufactured in accordance with quality management systems with BS EN ISO 9001:2001 by Celotex Limited. All products must be installed in accordance with instructions issued by Celotex Limited.
 R-Value 2.15 m²K/V
 Weight 1.82kg/m²
 250mm Reinforced insitu concrete slab to Engineers details
 12.5mm Gyproc Plasterboard
 2.5mm Skim coat

BASEMENT WALL CONSTRUCTION [WC_01]
 15mm Plasterboard and skim
 215mm Reinforced concrete wall to Structural Engineers details
 5mm 'GRACE' Bituthene 8000 liquid membrane. Please refer to manufacturers details
 25mm 'GRACE' Servipak 3 protection
 75mm 'CELOTEX' GA 3075 75mm Rigid insulation

BASEMENT FLOOR CONSTRUCTION [FC_01]
 20mm Carpet or timber with appropriate underlay to use with underfloor with less than 1.5 tog.
 65mm Sand cement screed
 -- Wavin underfloor heating system for screed with pipes stapled to the rigid insulation to comprise of 16mm pipe laid at 200mm centres. Please refer to manufacturers details.
 50mm Insulation shall be Celotex FF3050L 50mm thick comprising a polyisocyanurate rigid foam insulation core with low emissivity aluminium foil facings on both sides. CE marking compliance to BS EN 13165-2:2001 and manufactured in accordance with quality management systems with BS EN ISO 9001:2001 by Celotex Limited. All products must be installed in accordance with instructions issued by Celotex Limited.
 R-Value 2.15 m²K/V
 Weight 1.82kg/m²
 150mm Reinforced insitu concrete slab to Engineers details
 -- GRACE Preprufe 300R waterproof membrane. Please refer to manufacturers data
 50mm Sand blinding
 325mm Well consolidated hardcore
 GRACE Preprufe DPM system on concrete blinding

BEDROOM LEVEL FFL +18.285

ALUMINIUM LOUVRE SYSTEM
 Polyester powder coated aluminum louvre system to specialists details

SLIDING WINDOW / CILL UNIT
 Polyester powder coated aluminum framed windows. Colour finish: Ral 7004 Matt
 Low E glazing unit
 6mm clear + 12mm cavity + 6mm clear

BEDROOM LEVEL FFL +15.505

EXTERNAL WALL CONSTRUCTION [WC_02]
 20mm External render system
 N/A Metal mesh
 N/A DPM
 18mm OSB Board
 15mm Insulation shall be celotex GA3015 comprising a polyisocyanurate rigid foam insulation core with low emissivity aluminium foil facings on both sides. CE marking compliance to be en 13165-2:2001 and manufactured in accordance with quality management systems with be en iso 9001:2001 by celotex limited. all products must be installed in accordance with instructions issued by celotex limited.
 r-value 4.3 m²K/V weight 3.44kg/m²
 150mm Dense concrete blockwork
 50mm Rigid insulation
 12.5mm Gyproc Plasterboard
 2.5mm Skim coat

EXTERNAL LEVEL FFL +12.900
 BASEMENT LEVEL FFL +12.700

'GRACE' BITUTHENE 8000 liquid membrane lapped over Bituthene 8000 and terminated 25mm under cavity tray See 'GRACE' construction products details for further information

'GRACE' Servipak 3 protection

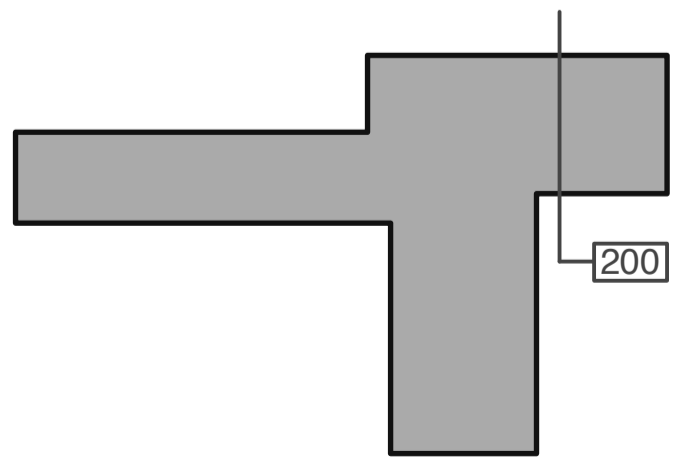
'CELOTEX' GA 3075 75mm Rigid insulation

'GRACE' Bituthene 8000 DPM on serviced primer

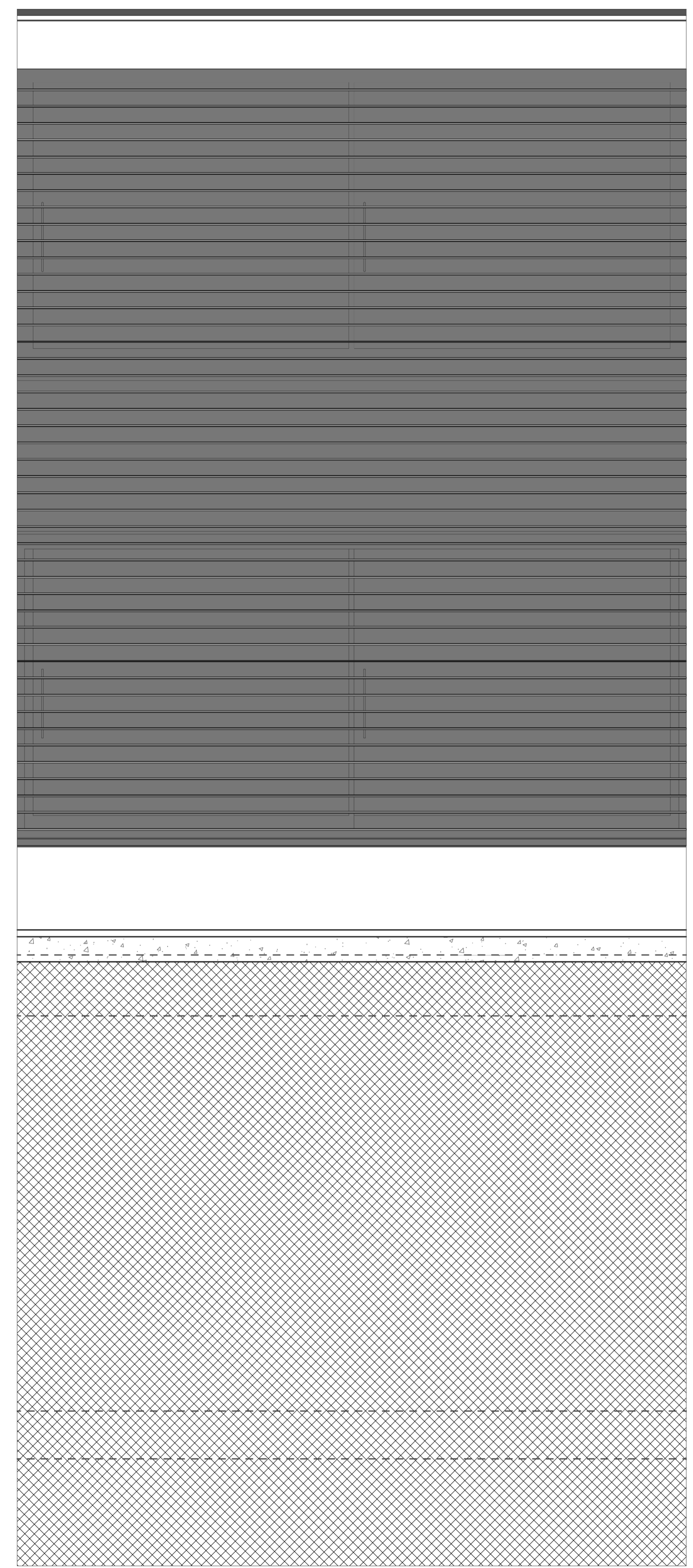
RIW (or similar product by 'GRACE') waterstop to be installed to manufacturers details

Perforated pipe as foundation drain, 200mm below basement floor, with coarse gravel surround

BASEMENT LEVEL FFL +10.000



01 SECTION 200 - GA SCALE 1:10@A1 1:20@A3



01 ELEVATION 200 - GA SCALE 1:15@A1

REVISIONS

BUILDING CONTROL

MOOARC 198 BLACKSTOCK RD LONDON N5 1EN T 020 7354 1729 F 020 7354 1730 E studio@mooarc.com	
PROJECT WALLACE HOUSE, FITZROY PARK, LONDON, N6 6HT	DATE JULY 2009
TITLE ELEVATION / SECTION STUDY 01	SCALE 1:10
	213_200

A1 ORIGINAL

THIS DRAWING IS NOT TO BE SCALED DIMENSIONS TO BE CHECKED ON SITE COPYRIGHT MOOARC LTD

BEDROOM LEVEL FFL +18.285

ALUMINIUM LOUVRE SYSTEM
Polyester powder coated aluminium louvre system to specialists details

FIXED WINDOW / CILL UNIT
Polyester powder coated aluminium framed windows. Colour finish: Ral 7004 Matt
Low E glazing unit
6mm clear + 12mm cavity + 6mm clear

EXTERNAL WALL CONSTRUCTION [WC_03]
20mm Travertine cladding panel. Supplied by Chelsea Artisans Ltd ref: Diamond Ultraite
150mm Cladding system by Shackerley or Downer Cladding Systems
75mm Insulation shall be celotex GA3075 comprising a polyisocyanurate rigid foam insulation core with low emissivity aluminium foil facings on both sides. CE marking compliance to be en 13165:2001 and manufactured in accordance with quality management systems with BS EN ISO 9001:2001 by Celotex Limited. All products must be installed in accordance with instructions issued by celotex limited. R-value 4.3 m2K/V weight 3.44kg/m2
215mm Dense concrete blockwork
12.5mm Gyproc Plasterboard
2.5mm Skim coat

BEDROOM LEVEL FFL +15.505

EXTERNAL WALL CONSTRUCTION [WC_02]

20mm External render system
N/A Metal mesh
N/A DPM
18mm OSB Board
15mm Insulation shall be celotex GA3015 comprising a polyisocyanurate rigid foam insulation core with low emissivity aluminium foil facings on both sides. CE marking compliance to be en 13165:2001 and manufactured in accordance with quality management systems with BS EN ISO 9001:2001 by Celotex Limited. All products must be installed in accordance with instructions issued by celotex limited. R-value 4.3 m2K/V weight 3.44kg/m2

150mm Dense concrete blockwork
50mm Rigid insulation
12.5mm Gyproc Plasterboard
2.5mm Skim coat

EXTERNAL LEVEL FFL +12.900

BASEMENT LEVEL FFL +12.700

'GRACE' BITUTHENE liquid membrane lapped over Bituthene 8000 and terminated 25mm under cavity tray
See 'GRACE' construction products details for further information

'GRACE' Servipak 3 protection

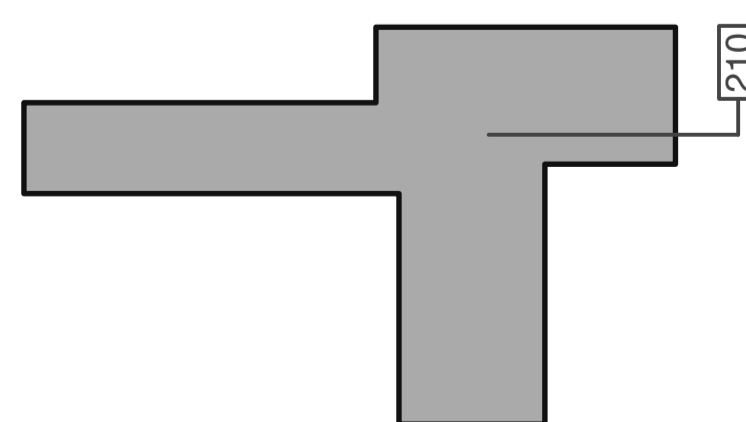
'CELOTEX' GA 3075 75mm Rigid insulation

'GRACE' Bituthene 8000 DPM on serviced primer

RiW (or similar product by GRACE) waterstop to be installed to manufacturers details

Perforated pipe as foundation drain, 200mm below basement floor, with coarse gravel surround

BASEMENT LEVEL FFL +10.000



01 SECTION 210 - GA SCALE 1:10@A1 1:20@A3

ROOF CONSTRUCTION [RC_01]
5mm Single ply membrane system
100mm Insulation cut to falls. Min 1 in 80 fall
200mm Metal open web joists to Structural Engineers details
12.5mm Gyproc Plasterboard
2.5mm Skim coat

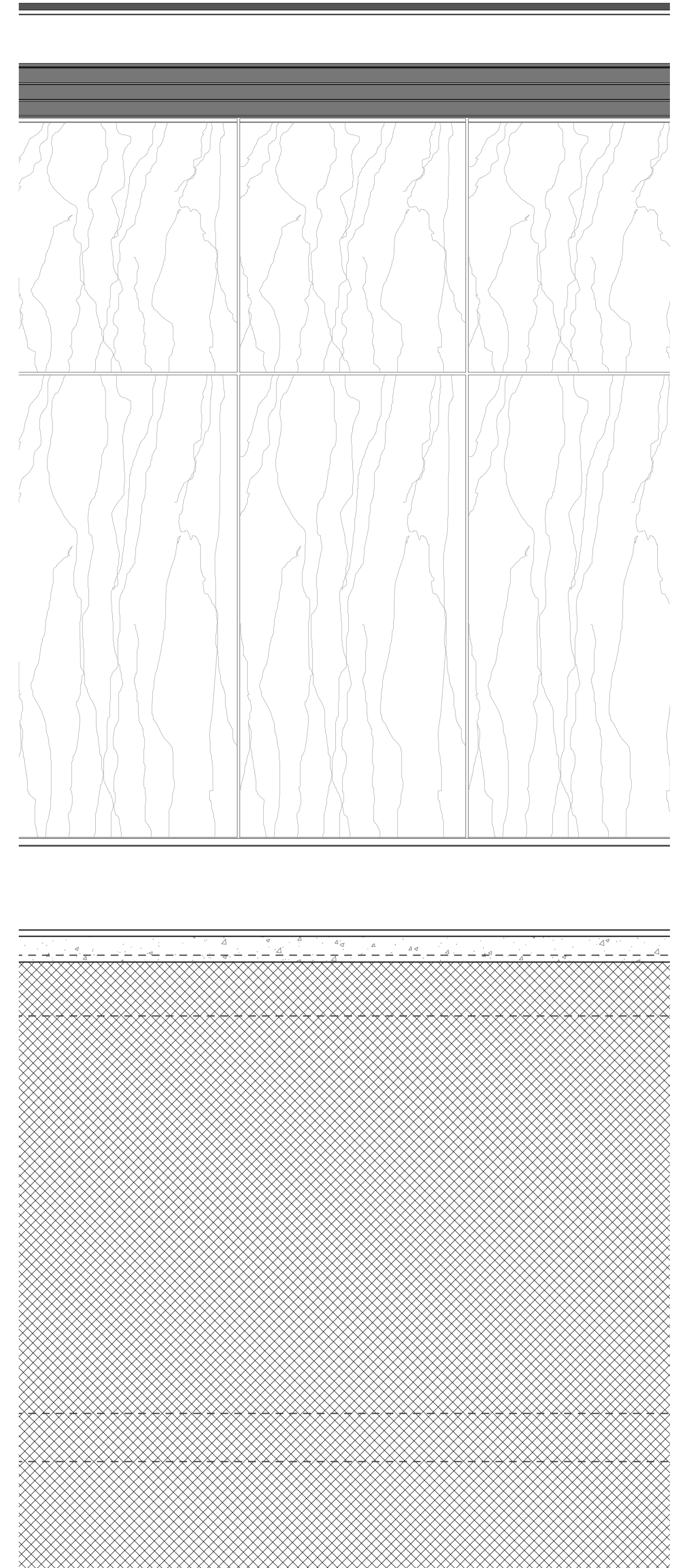
FIRST FLOOR CONSTRUCTION [FC_03]
20mm Carpet or timber with appropriate underlay to use with underfloor with less than 1.5 tog.
18mm Plyboard
200mm Metal open web joists to Structural Engineers details
12.5mm Gyproc Plasterboard
2.5mm Skim coat

GROUND FLOOR CONSTRUCTION [FC_02]
20mm Carpet or timber with appropriate underlay to use with underfloor with less than 1.5 tog.
65mm Sand cement screed
-- Wavin underfloor heating system for screed with pipes stapled to the rigid insulation to comprise of 16mm pipe laid at 200mm centres. Please refer to manufacturers details.
25mm Insulation shall be Celotex FF3025L 25mm thick comprising a polyisocyanurate rigid foam insulation core with low emissivity aluminium foil facings on both sides. CE marking compliance to BS EN 13165:2001 and manufactured in accordance with quality management systems with BS EN ISO 9001:2001 by Celotex Limited. All products must be installed in accordance with instructions issued by Celotex Limited. R-Value 2.15 m2K/V Weight 1.82kg/m2
250mm Reinforced insitu concrete slab to Engineers details
12.5mm Gyproc Plasterboard
2.5mm Skim coat

BASEMENT WALL CONSTRUCTION [WC_01]
15mm Plasterboard and skim
215mm Reinforced concrete wall to Structural Engineers details
5mm 'GRACE' Bituthene 8000 liquid membrane. Please refer to manufacturers details
25mm 'GRACE' Servipak 3 protection
75mm 'CELOTEX' GA 3075 75mm Rigid insulation

BASEMENT FLOOR CONSTRUCTION [FC_01]
20mm Carpet or timber with appropriate underlay to use with underfloor with less than 1.5 tog.
65mm Sand cement screed
-- Wavin underfloor heating system for screed with pipes stapled to the rigid insulation to comprise of 16mm pipe laid at 200mm centres. Please refer to manufacturers details.
50mm Insulation shall be Celotex FF3050L 50mm thick comprising a polyisocyanurate rigid foam insulation core with low emissivity aluminium foil facings on both sides. CE marking compliance to BS EN 13165:2001 and manufactured in accordance with quality management systems with BS EN ISO 9001:2001 by Celotex Limited. All products must be installed in accordance with instructions issued by Celotex Limited. R-Value 2.15 m2K/V Weight 1.82kg/m2
150mm Reinforced insitu concrete slab to Engineers details
-- GRACE Preprufe 300R waterproof membrane. Please refer to manufacturers data
50mm Sand blinding
325mm Well consolidated hardcore

GRACE Preprufe DPM system on concrete blinding



01 ELEVATION 210 - GA SCALE 1:15@A1

REVISIONS

BUILDING CONTROL

MOOARC 198 BLACKSTOCK RD LONDON N5 1EN T 020 7354 1729 F 020 7354 1730 E studio@mooarc.com

PROJECT WALLACE HOUSE, FITZROY PARK, LONDON, N6 6HT DATE JULY 2009
TITLE ELEVATION / SECTION STUDY 01 SCALE 1:10 213_210

A1 ORIGINAL

THIS DRAWING IS NOT TO BE SCALED DIMENSIONS TO BE CHECKED ON SITE COPYRIGHT MOOARC LTD

ROOF CONSTRUCTION [RC_01]

- 5mm Single ply membrane system
- 100mm Insulation cut to falls. Min 1 in 80 fall
- 200mm Metal open web joists to Structural Engineers details
- 12.5mm Gyproc Plasterboard
- 2.5mm Skim coat

BEDROOM LEVEL FFL +18.285

FIRST FLOOR CONSTRUCTION [FC_03]

- 20mm Carpet or timber with appropriate underlay to use with underfloor with less than 1.5 tog.
- 18mm Plyboard
- 200mm Metal open web joists to Structural Engineers details
- 12.5mm Gyproc Plasterboard
- 2.5mm Skim coat

BEDROOM LEVEL FFL +15.505

GROUND FLOOR CONSTRUCTION [FC_02]

- 20mm Carpet or timber with appropriate underlay to use with underfloor with less than 1.5 tog.
- 65mm Sand cement screed
 - Wavin underfloor heating system for screed with pipes stapled to the rigid insulation to comprise of 16mm pipe laid at 200mm centres. Please refer to manufacturers details.
- 25mm Insulation shall be Celotex FF302SL 25mm thick comprising a polyisocyanurate rigid foam insulation core with low emissivity aluminium foil facings on both sides. CE marking compliance to BS EN 13165:2001 and manufactured in accordance with quality management systems with BS EN ISO 9001:2001 by Celotex Limited. All products must be installed in accordance with instructions issued by Celotex Limited.
 - R-Value 2.15 m²K/V
 - Weight 1.82kg/m²
- 250mm Reinforced insitu concrete slab to Engineers details
- 12.5mm Gyproc Plasterboard
- 2.5mm Skim coat

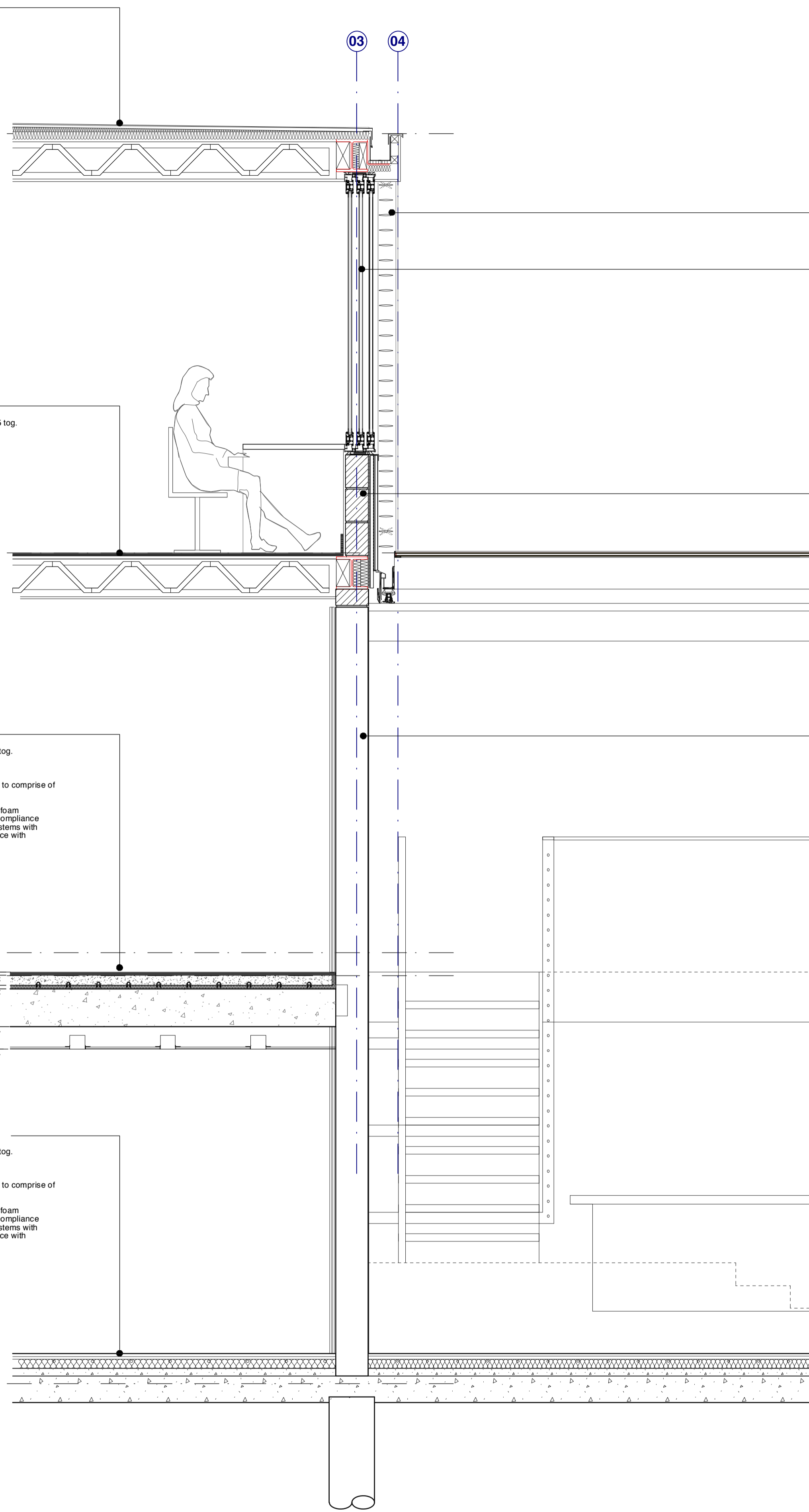
EXTERNAL LEVEL FFL +12.900

BASEMENT LEVEL FFL +12.700

BASEMENT FLOOR CONSTRUCTION [FC_01]

- 20mm Carpet or timber with appropriate underlay to use with underfloor with less than 1.5 tog.
- 65mm Sand cement screed
 - Wavin underfloor heating system for screed with pipes stapled to the rigid insulation to comprise of 16mm pipe laid at 200mm centres. Please refer to manufacturers details.
- 50mm Insulation shall be Celotex FF3050L 50mm thick comprising a polyisocyanurate rigid foam insulation core with low emissivity aluminium foil facings on both sides. CE marking compliance to BS EN 13165:2001 and manufactured in accordance with quality management systems with BS EN ISO 9001:2001 by Celotex Limited. All products must be installed in accordance with instructions issued by Celotex Limited.
 - R-Value 2.15 m²K/V
 - Weight 1.82kg/m²
- 150mm Reinforced insitu concrete slab to Engineers details
 - GRACE Preprufe 300R waterproof membrane. Please refer to manufacturers data
- 50mm Sand blinding
- 325mm Well consolidated hardcore

BASEMENT LEVEL FFL +10.000

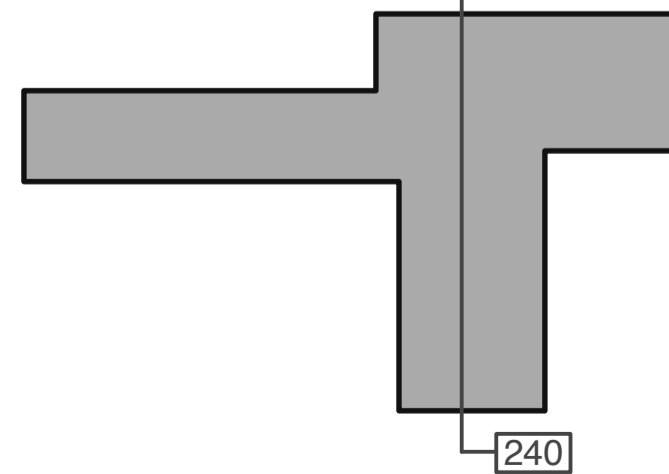
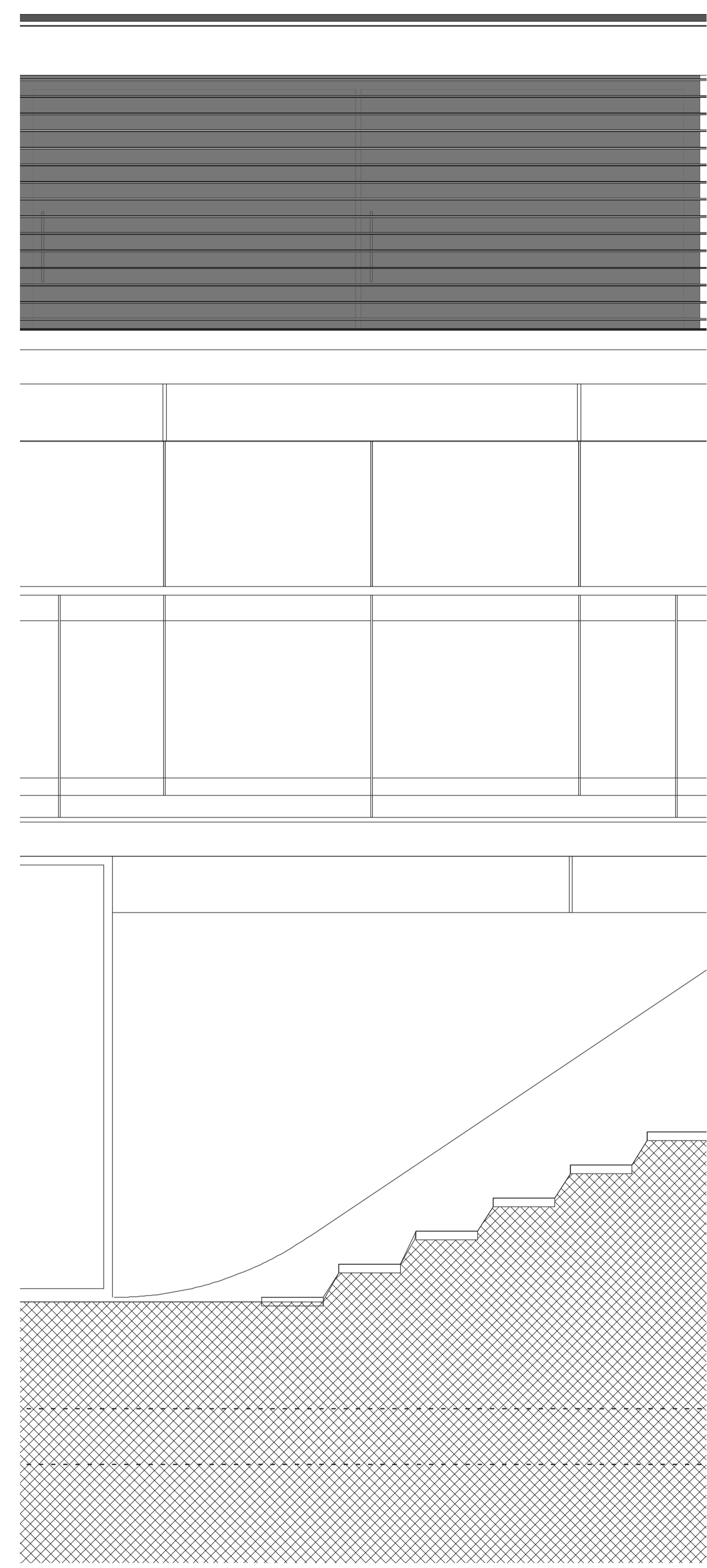


ALUMINIUM LOUVRE SYSTEM
Polyester powder coated aluminum louvre system to specialists details

SLIDING WINDOW / CILL UNIT
Polyester powder coated aluminium framed windows. Colour finish: Ral 7004 Matt
Low E glazing unit
6mm clear + 12mm cavity + 6mm clear

EXTERNAL WALL CONSTRUCTION [WC_03]
20mm Travertine cladding panel. Supplied by Chelsea Artisans Ltd ref. Diamond Ultraite
150mm Cladding system by Shackerley or Downer Cladding Systems
75mm Insulation shall be celotex GA3075 comprising a polyisocyanurate rigid foam insulation core with low emissivity aluminium foil facings on both sides. CE marking compliance to BS EN 13165:2001 and manufactured in accordance with quality management systems with BS EN ISO 9001:2001 by celotex limited. All products must be installed in accordance with instructions issued by celotex limited.
r-value 4.3 m²K/v weight 3.44kg/m²
215mm Dense concrete blockwork
12.5mm Gyproc Plasterboard
2.5mm Skim coat

EXISTING 215MM BLOCKWORK WALL CONSTRUCTION



01 SECTION 240 - GA SCALE 1:10@A1 1:20@A3

01 ELEVATION 240 - GA SCALE 1:15@A1

<p>REVISIONS</p>	<p>BUILDING CONTROL</p>		<p>MOOARC 198 BLACKSTOCK RD LONDON N5 1EN T 020 7354 1729 F 020 7354 1730 E studio@mooarc.com</p>	
			<p>PROJECT WALLACE HOUSE, FITZROY PARK, LONDON, N6 6HT</p>	<p>DATE JULY 2009</p>