

NET :

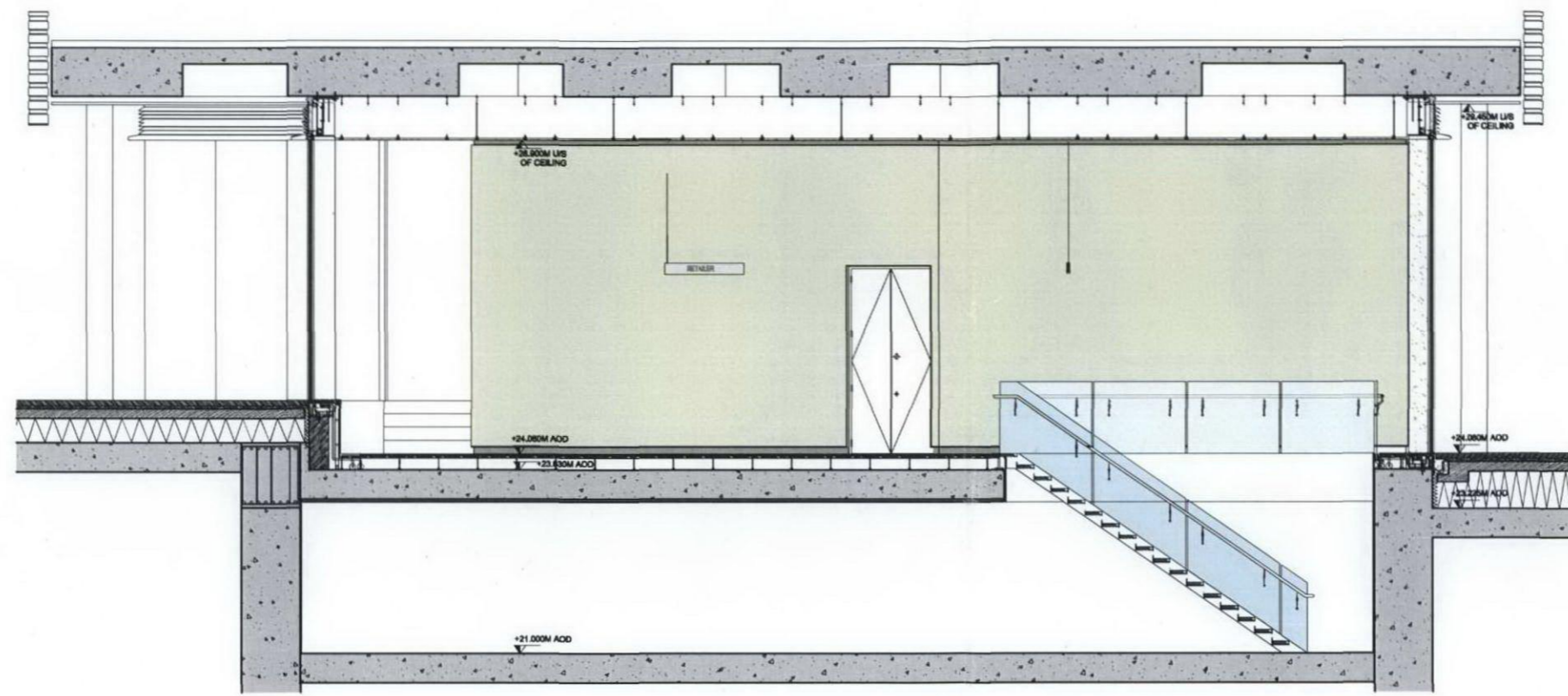


VENEER PLASTER
Contractor: BDL GROUP PLC
Manufacturer/Supplier: Armourcoat Ltd
Product reference: Armourcoat Polish Plas
Colour/Finish: RAL 9002 / Spatula finish
Contact: www.ARMOURCOAT.com
Refer to FPA specification M20 and drawing series 26000

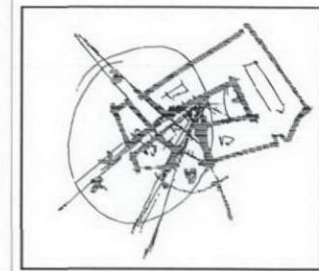
| INDEX | DESCRIPTION | DATE |
|-------|------------------------|-------|
| 01 | ISSUED FOR INFORMATION | dd mm |

2009/5889/P

FILE COPY



1 RETAIL UNIT 5 SECTION A-A CORE5
SCALE : 1:50 @ A1



Central St. Giles London

APPLICANT
LEGAL & GENERAL ASSURANCE SOCIETY LTD.
Bucklersbury House, 3 Queen Victoria Street
London EC4N 3BH
tel: +44 (0)20 7528 6500 fax: +44 (0)20 7528 6848

DEVELOPER
STANHOPE PLC
Norfolk House, 31 St James Square London SW1Y 4JJ
tel: +44 (0)20 7170 1700 fax: +44 (0)20 7170 1701
e-mail: ma@stanhope.plc.uk

ARCHITECTS
RENZO PIANO BUILDING WORKSHO
34, rue des Archives 75004 Paris
tel: +33 (0)1 44 61 48 00 fax: +33 (0)1 42 78 01 98
FLETCHER PRIEST ARCHITECTS LONDON + KÖLN
Middlesex House, 34/42 Cleveland St, London W1T 4JE
tel: +44 (0)20 7034 2200 fax: +44 (0)20 7637 5347
internet: www.fletcherpriest.com

ENGINEERING CONSULTANT
OVE ARUP & PARTNERS
13 Fitzroy Street London W1P 9HD
tel: +44 (0)20 7636 1531 fax: +44 (0)20 7580 3924
e-mail: www.arup.com

INFORMATION

SENDER
FLETCHER PRIEST

TITLE
CORE 4 RETAIL UNIT 5 SECTION A-A

DATE 22 04 2009 SCALE 1:50 @ A1

DRAWN BY LC CHECKED BY MM

PLAN N° FP-R2-SC-L00-20744 REVISION 01

2009/5889/P

