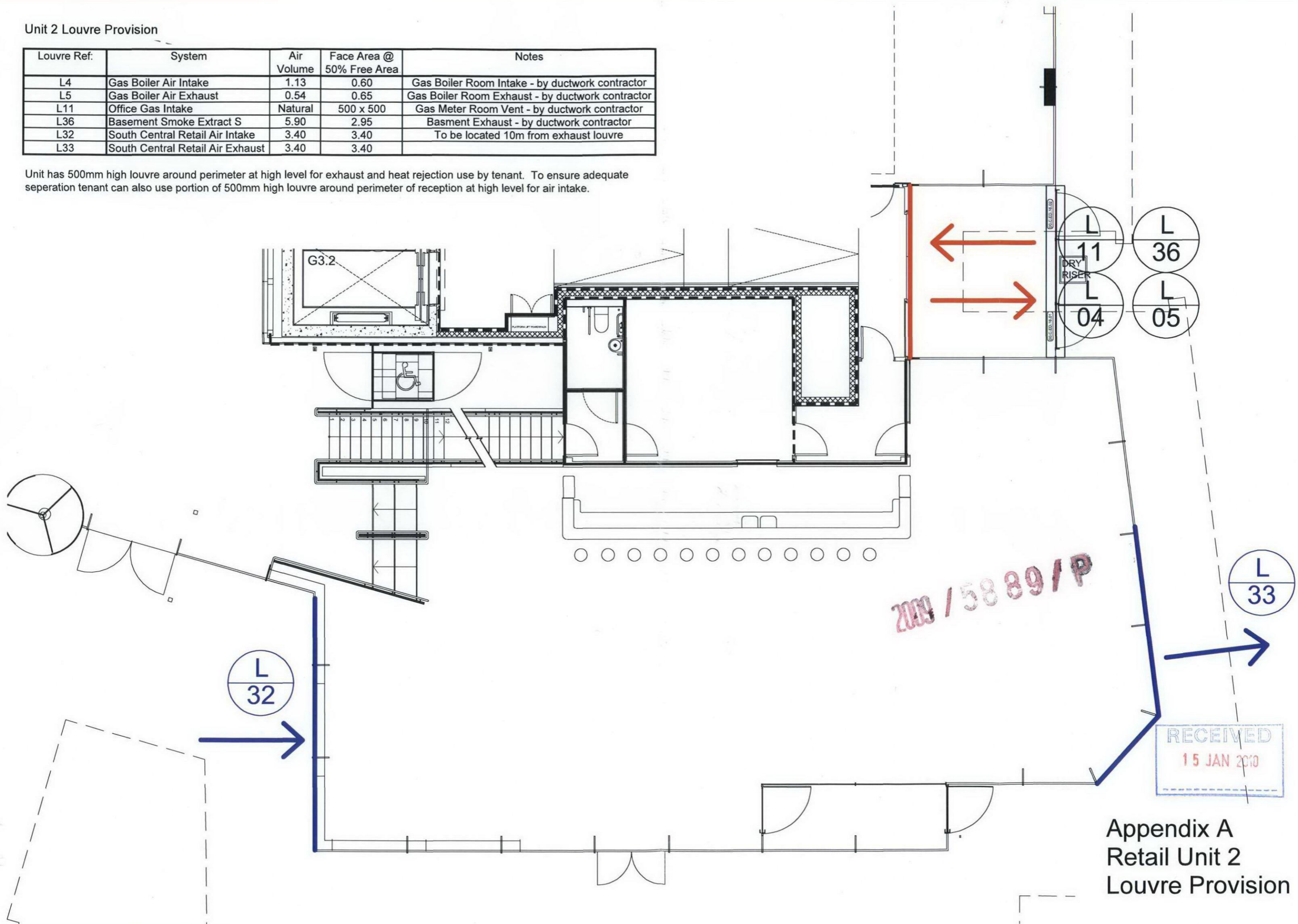


Unit 2 Louvre Provision

| Louvre Ref. | System | Air Volume | Face Area @ 50% Free Area | Notes |
|-------------|----------------------------------|------------|---------------------------|--|
| L4 | Gas Boiler Air Intake | 1.13 | 0.60 | Gas Boiler Room Intake - by ductwork contractor |
| L5 | Gas Boiler Air Exhaust | 0.54 | 0.65 | Gas Boiler Room Exhaust - by ductwork contractor |
| L11 | Office Gas Intake | Natural | 500 x 500 | Gas Meter Room Vent - by ductwork contractor |
| L36 | Basement Smoke Extract S | 5.90 | 2.95 | Basement Exhaust - by ductwork contractor |
| L32 | South Central Retail Air Intake | 3.40 | 3.40 | To be located 10m from exhaust louvre |
| L33 | South Central Retail Air Exhaust | 3.40 | 3.40 | |

Unit has 500mm high louvre around perimeter at high level for exhaust and heat rejection use by tenant. To ensure adequate separation tenant can also use portion of 500mm high louvre around perimeter of reception at high level for air intake.



Appendix A
Retail Unit 2
Louvre Provision