

KEY :

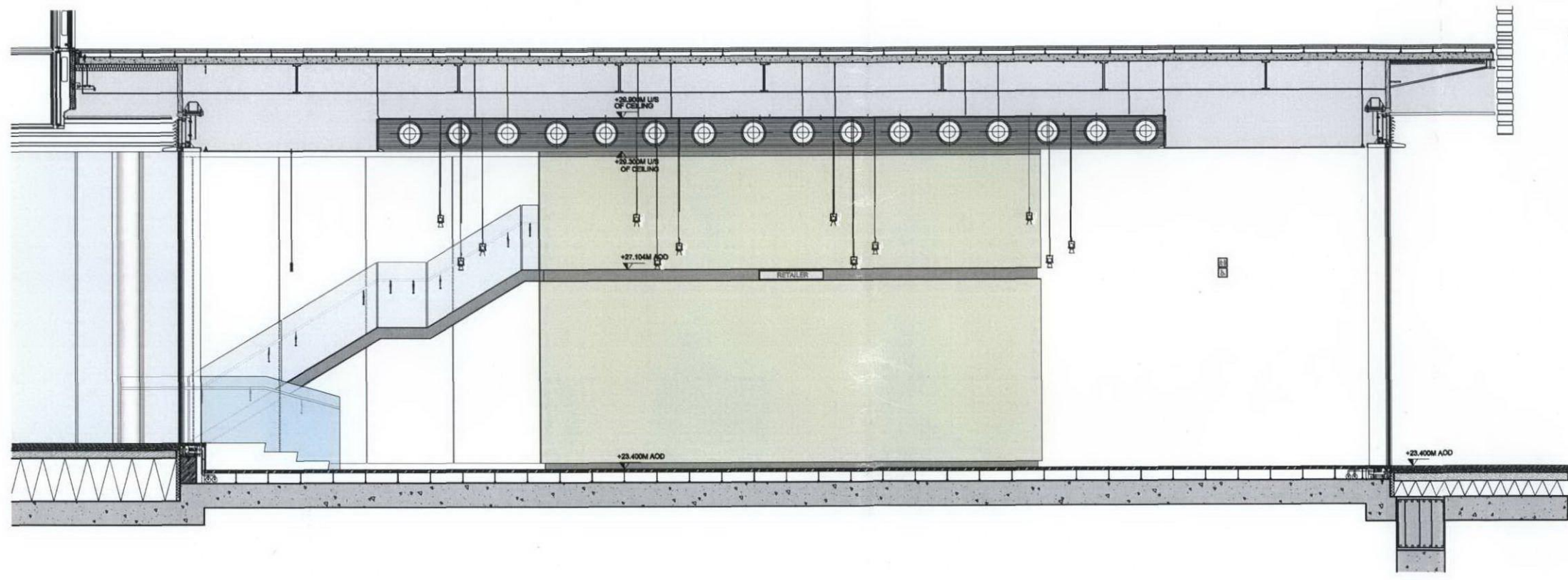
- 
PLASTER BOARD
 Contractor: BDL GROUP PLC
 Manufacturer/Supplier: Armourcoat Ltd
 Product reference: Armourcoat Polish Plaster
 Colour/Finish: RAL 9002 / Spatula finish
 Contact: www.ARMOURCOAT.com
 Refer to FPA specification M20 and drawing series 26000

- 
NOZZLE
 Manufacturer/Supplier: Trox
 Contact: www.trox.com
 Product reference: DUK-V
 Colour/Finish: RAL 9002/PPC
 Refer to ARUP specification and FPA drawing series 35000

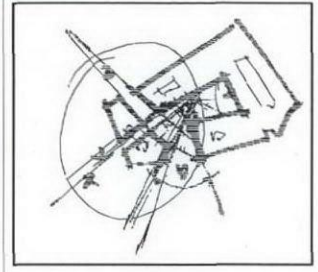
- 
 Manufacturer/Supplier: Trox
 Contact: www.trox.com
 Product reference: Type AH
 Colour/Finish: RAL 9002/PPC
 Refer to ARUP specification and FPA drawing series 35000

2009 / 5889 / P

FILE COPY



1 RETAIL UNIT 2 SECTION A-A CORE1
SCALE : 1:50 @ A1



**Central St. Giles
London**

APPLICANT
LEGAL & GENERAL ASSURANCE SOCIETY LTD.
 Bucklebury House, 3 Queen Victoria Street
 London EC4N 8NH
 tel: +44 (0)20 7528 6500 fax: +44 (0)20 7528 6848

DEVELOPER
STANHOPE PLC
 Norfolk House, 31 St James Square London SW1Y 4JU
 tel: +44 (0)20 7170 1700 fax: +44 (0)20 7170 1701
 e-mail: mail@stanhope.plc.uk

ARCHITECTS
RENZO PIANO BUILDING WORKSHOP
 34, rue des Archives 75004 Paris
 tel: +33 (0)1 44 61 49 00 fax: +33 (0)1 42 78 01 98
FLETCHER PRIEST ARCHITECTS LONDON + KÖLN
 Middlesex House, 34/42 Cleveland St. London W1T 4JE
 tel: +44 (0)20 7034 2200 fax: +44 (0)20 7637 5347
 internet: www.fletcherpriest.com

ENGINEERING CONSULTANT
OVE ARUP & PARTNERS
 13 Fitzroy Street London W1P 9HD
 tel: +44 (0)20 7638 1531 fax: +44 (0)20 7580 3924
 e-mail: www.arup.com

INFORMATION

SENDER
 FLETCHER PRIEST

TITLE
 CORE 1 RETAIL UNIT 2 SECTION

DATE 22 04 2009 **SCALE** 1:50 @ A1
DRAWN BY LC **CHECKED BY** MM
PLAN N° FP-C1-SC-L00-20719 **REVISION** 0

