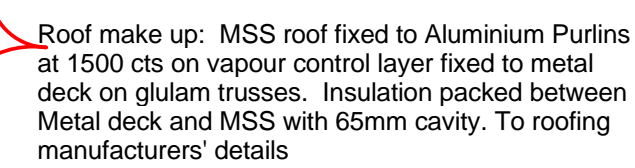


## 4 GLULAM TRUSS 4 AND CONNECTIONS



**GUTTER:** Steel gutter to PH eng. details / specification, on separation layer of bituminous DPC to lap with roofing vapour barrier; gutter restrained with bracket at 700mm cnsrs & screw fixed back to timber structure behind.

**TIMBER SUPPORT STRUCTURE:** WBP exterior quality plywood & treated sw timber on EPDM for gutter support.

2 layers of 80mm Pack Rockwool insulation or  
similar approved at eaves level

Base plate fixed to pad stone on top of heritage wall  
to struc eng detail

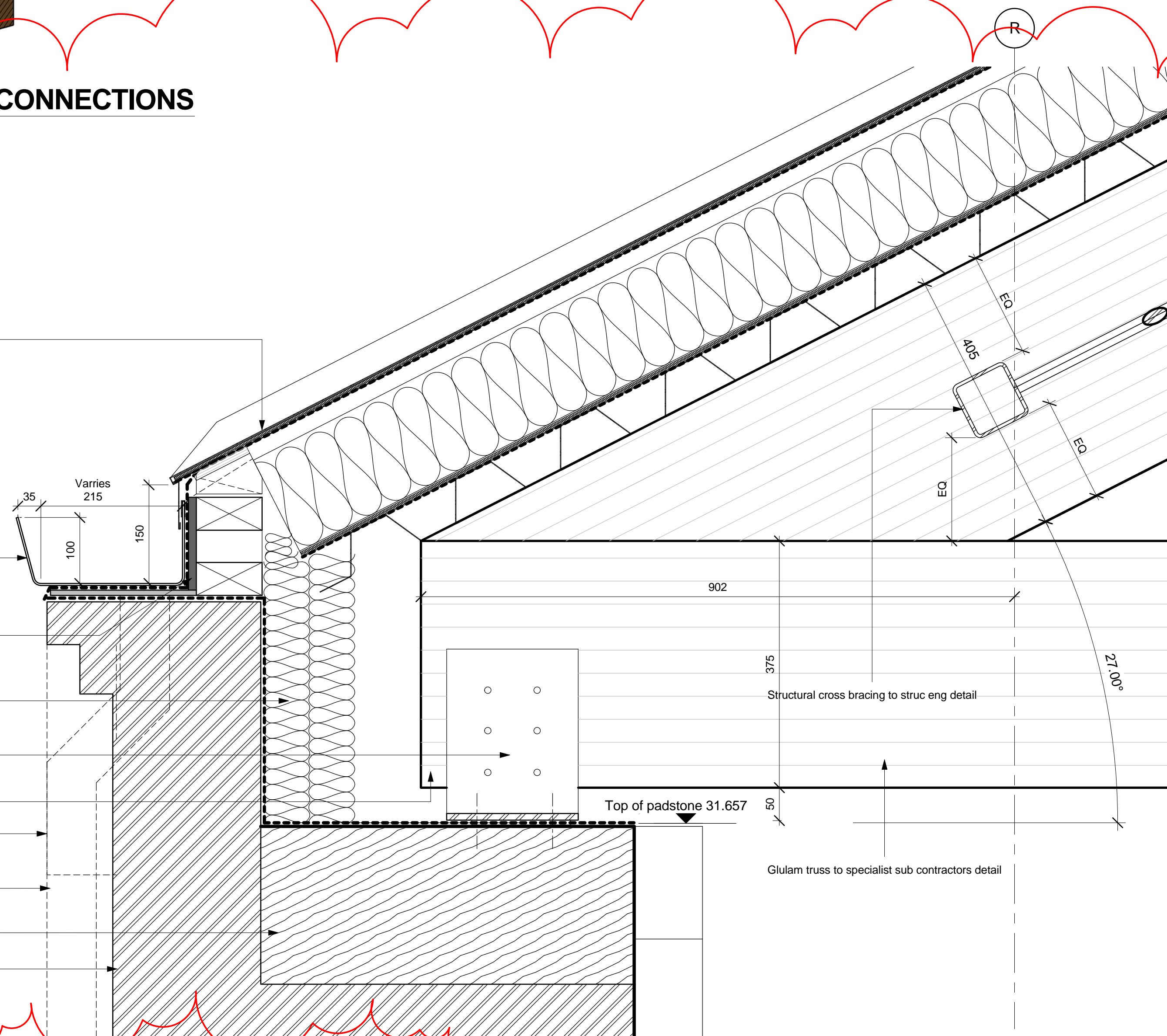
GLULAM: New 405x150mm glulam truss / rafter

Dashed line showing take hopper to R. Gilmuth's design. Brick corbeling to be cut bak around hoppers

RWP: Cast iron round rain water downpipes, at locations shown on plans/elevations. Backing plate to be provided to cover existing recesses as shown on elevations

locations of new trusses to S.E. details.

**BRICKWORK:** Works to existing brickwork arches etc to recommendations from specialist report.

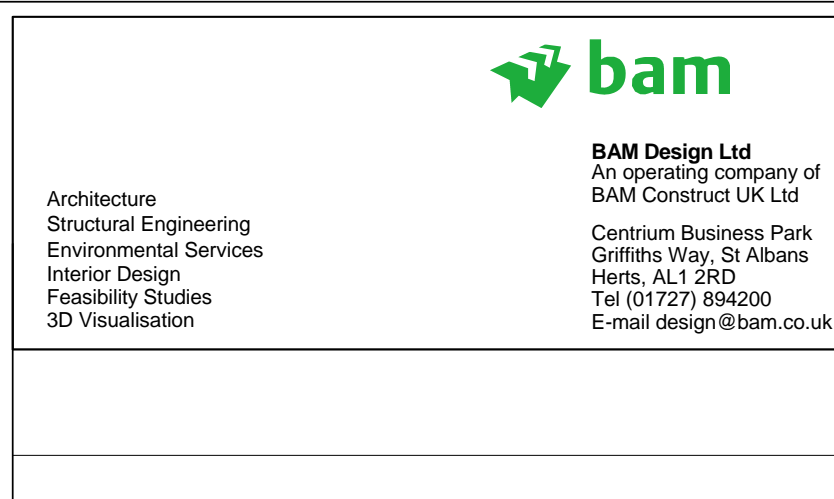
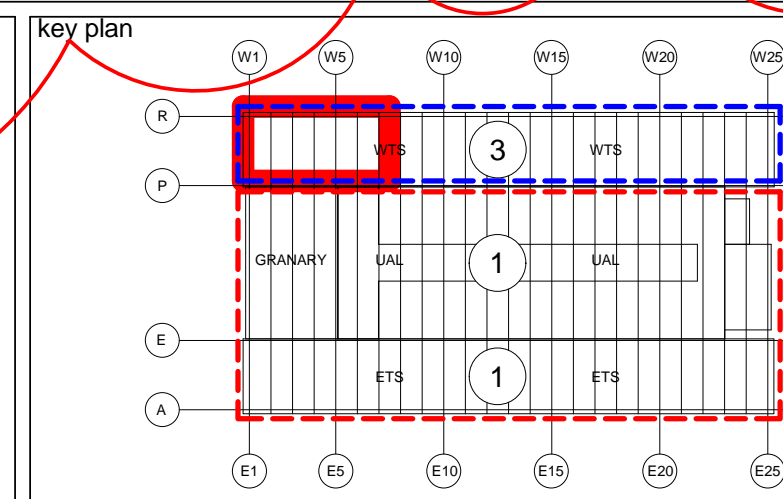


## 1 Typical WTS Eaves Detail in Stables Area

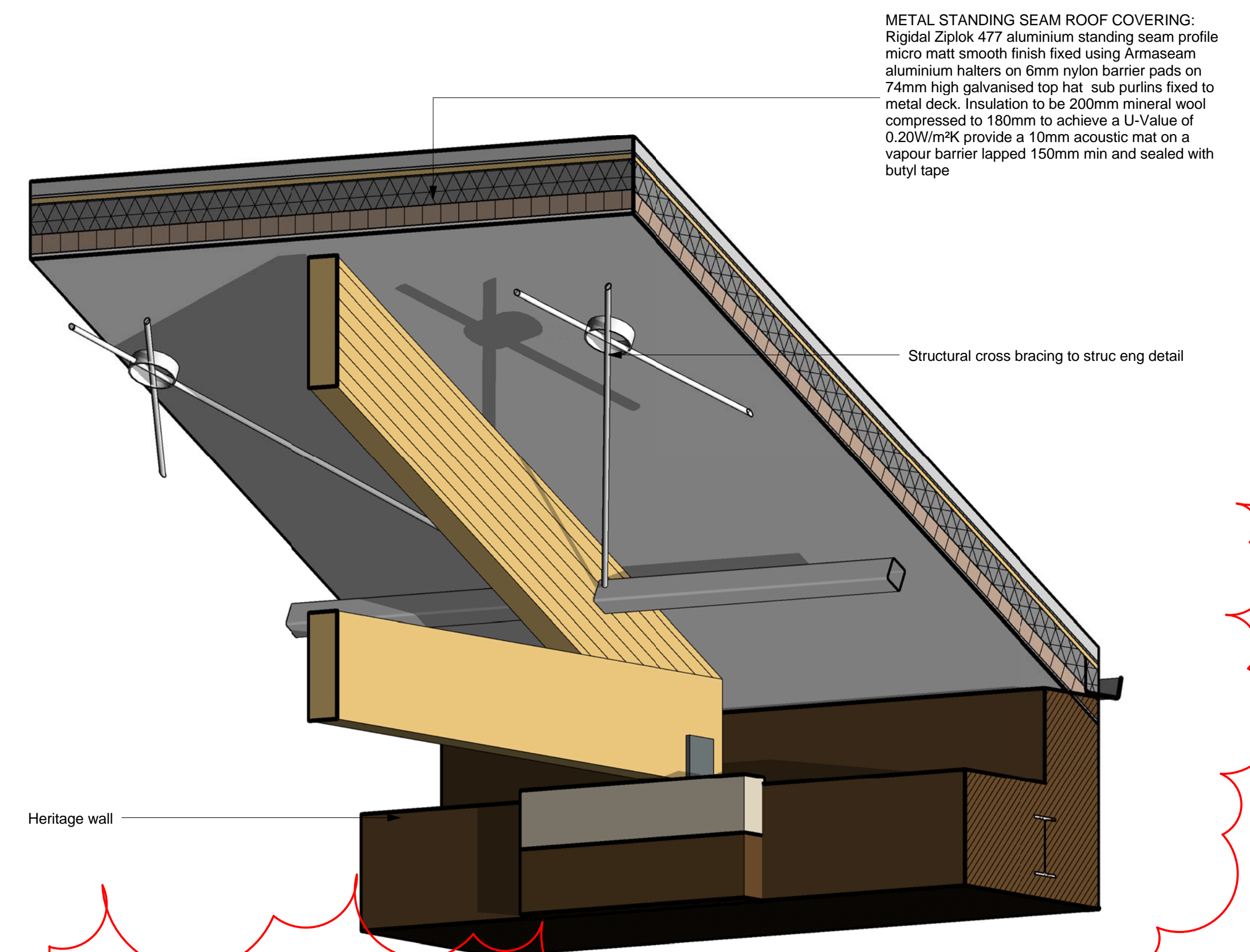
## DO NOT SCALE FROM THIS DRAWING

Note:- All dimensions to be checked on site, levels vary along heritage wall and will need to be confirmed on site before fabricating any glulams. For any connection details with wind posts to heritage wall refer to AKS Ward drawings. All wind posts / structure to be set out from heritage wall and not grid lines. Each glulam / wind post location is to be individually surveyed by subcontractor. Glulam and wind posts connections all to be constructed as BAM Design series of details.

D	MW	16 08 09		MAN	Glulam types removed. Details added. Title amended. Drawing Status amended. All inline with revised WTS scheme.
C	MW	28 04 09		JC	DRAWING STATUS AMENDED
B	MW	27 03 09		JC	Drawing updated to SW comments.
rev	by	date	van 200	chkd	amendments



## 2 3D View of Glulam Eaves Detail in Stables Area



**METAL STANDING SEAM ROOF COVERING:**  
Rigidal Ziplok 477 aluminium standing seam profile  
micro matt smooth finish fixed using Armasseam  
aluminium halters on 6mm nylon barrier pads on  
74mm high galvanised top hat sub purlins fixed to  
metal deck. Insulation to be 200mm mineral wool  
compressed to 180mm to achieve a U-Value of  
0.20W/m<sup>2</sup>K provide a 10mm acoustic mat on a  
vapour barrier lapped 150mm min and sealed with  
butyl tape

- Structural cross bracing to struc eng detail

project	<b>ARGENT ESTATES Ltd</b>	
	<b>EGY - KINGS CROSS CENTRAL</b>	
	<b>3753</b>	<b>3</b>
title	<b>WTS GLULAM'S (SHEET 2 OF 2)</b>	

drawing status				
CONSTRUCTION				
contract no.		scale		
LN0217		As indicated @ A1		
client ref.		date		
ARGENT		03/03/09		
drawn by		checked by		
MW		JC		
drawing no				
3753		ARCH		D