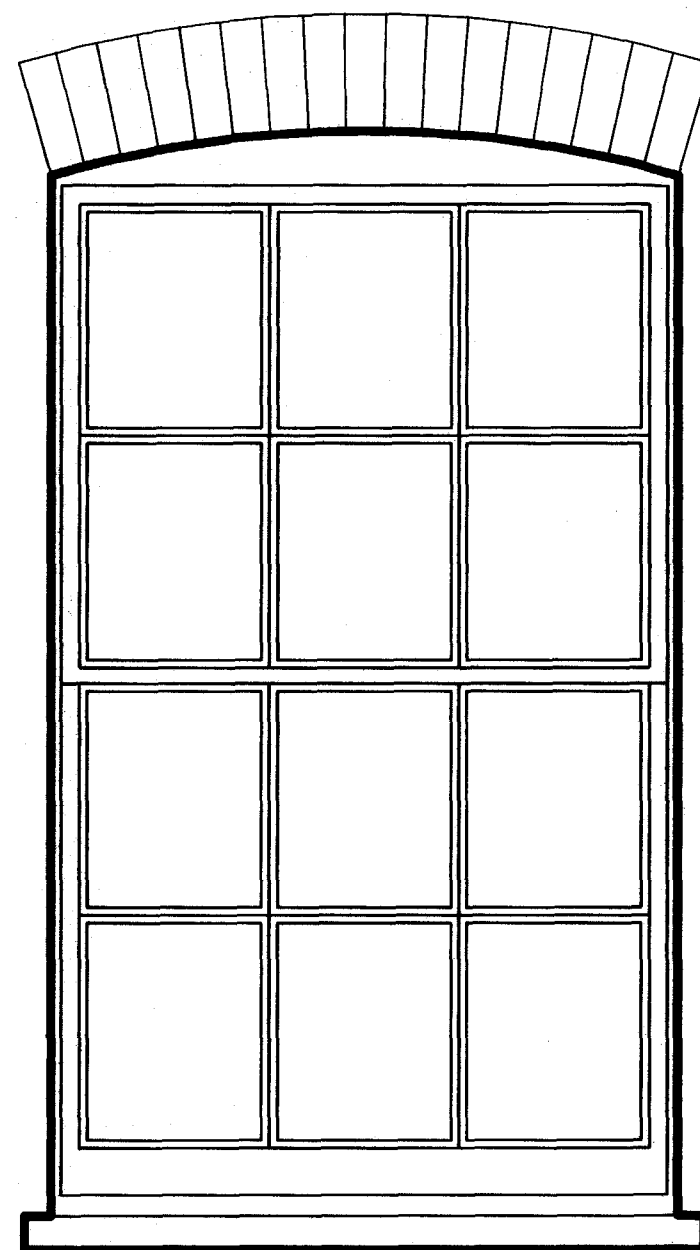


BRICK ARCH WITH  
RC LINTOL BEHIND



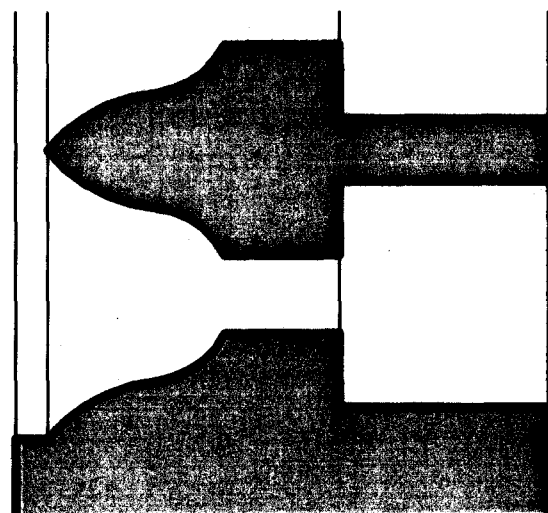
GROUND FLOOR

NEW SECOND HAND STOCK BRICK  
ARCH TO MATCH EXISTING OPENINGS  
ON REAR ELEVATIONS

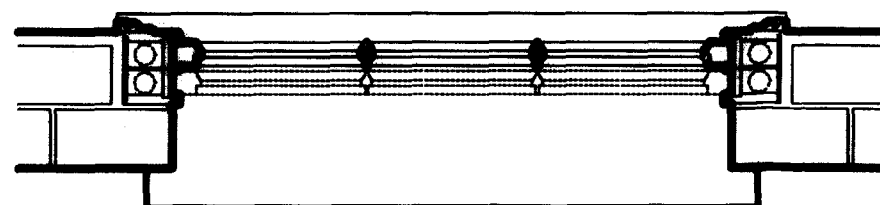
NEW MASONRY OPENING WITH  
SECOND HAND STOCK ARCH  
OVER AND PAINTED CAST SILL  
ALL DETAILED TO MATCH EXISTING  
WINDOWS ON REAR ELEVATION  
PAINT FINISH SOFTWOOD WINDOW  
WITH HARDWOOD SILL  
TRADITIONAL DOUBLE HUNG COUNTERWEIGHT  
SLIDING SASHES

JOINERY PROFILES AND GLAZING  
BARS ALL TO MATCH ORIGINAL  
WINDOWS

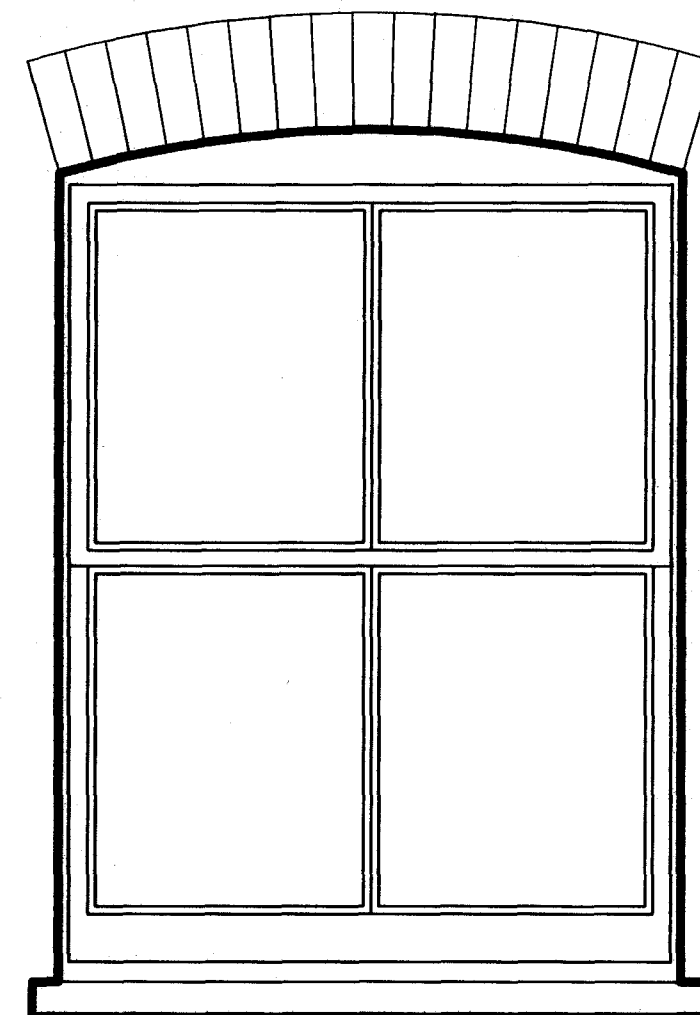
NEW PAINTED CONCRETE SILL  
TO MATCH EXISTING WINDOWS  
ON REAR ELEVATIONS



FULL SIZE JOINERY  
PROFILES FROM EXISTING  
GROUND FLOOR SASH



NEW WINDOW SITS BEHIND  
HALF BRICK REVEALS ALL  
TO MATCH EXISTING WINDOWS  
ON REAR ELEVATIONS



SECOND FLOOR

NOTE: FIRST FLOOR WINDOW TO  
REAR EXTENSION RE-USING  
EXISTING JOINERY SASH WINDOW  
TO BE REMOVED FROM LANDING

RECEIVED  
22 DEC 2009

PROPOSED

0 1m

REAR EXTENSION NEW WINDOWS

3 CHAMBERLAIN STREET

STEPHEN BRANDES ARCHITECTS

SCALE 1:20 @ A4

NOV 09

526 LB 108