

THE NUAIRE HEAT RECOVERY UNITS MRXBOX SIZE 90 L WOULD BE A GOOD SELECTION FOR FRESH AIR SUPPLY AND EXTRACT WITH HEAT RECOVERY UP TO 95% AND COME WITH A 5 YEAR WARRANTY

THEY ARE  
540mm deep  
875mm wide  
670mm high  
access at front required  
800mm wide x 1200mm high  
40kg weight

SPACE REQUIRED AT TOP TO CONNECT 4 X 180mm DUCTS (450mm MIN)

PROPOSED LOCATIONS

50mm Ø HEATING COIL IN STORE ROOM WITH IV'S AND TRV

NEW 100mm SOIL CONNECTION TO EXISTING BELOW SLAB DRAINAGE MANHOLE WITH NEW 100mm SVP TO ABOVE NEW TOILET AND BASIN CONNECTIONS AS INDICATED

DAIKIN VRV EXTERNAL REAT RECOVERY HEAT PUMP INVERTER CONTROLLED MODEL REVQ 8 F WITHIN SPECIAL ACOUSTIC ENCLOSURE WITH FACE ACCESS ALL SIDES WITH LOUVERES TOP DISCHARGE WITH ATTENUATOR 2500mm H x 1800mm W x 1000mm D

4 No. EXISTING GAS RISERS TO 1st, 2nd, 3rd & 4th FLOORS TO BE RETAINED GAS FLOOR SERVICE REMOVED

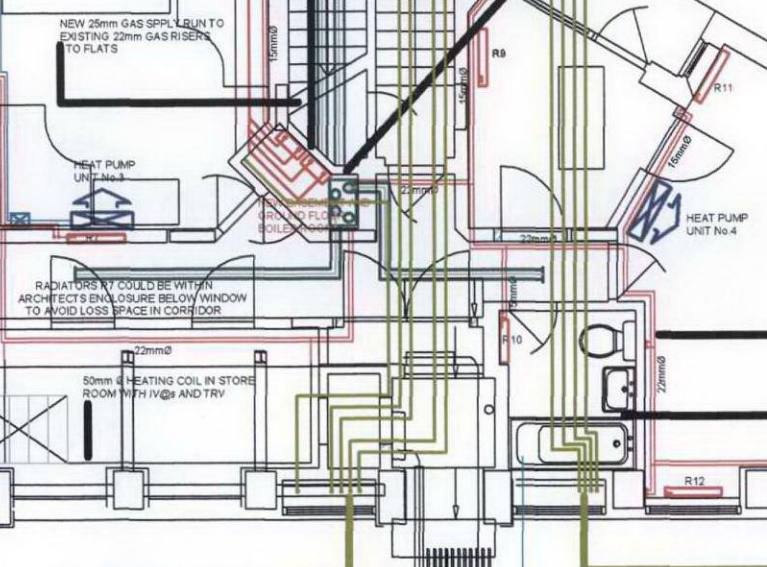
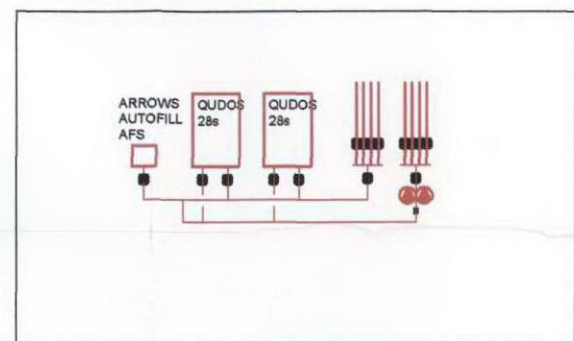
NEW BOILER FLUE AND AIR INTAKE FIXED TO WALL IN SAME WAY AS EXISTING GAS SUPPLIES AND TERMINATED 6 METRES ABOVE EXTERNAL LANDING LEVEL

TWO WALL GAS FIRED BOILERS KESTON CONDENSING ROOM SEALED WITH SYSTEM AUTO MAKE-UP AND EXPANSION VESSEL INVERTER CONTROLLED HEATING PUMPS DUTY / STANDBY KESTON COMPENSATED CONTROLS WITH OUTSIDE AND INTERNAL SENSOR (IN RECEPTION OFFICE)

2 No. 50mmØ PVC AIR INTAKES AND 2 No. 50mmØ PVC BOILER FLUES THE FLUE TERMINATIONS BEING ABOVE OR CLEAR OF WINDOWS TO COMPLY WITH BUILDING REGULATIONS

THE NUAIRE HEAT RECOVERY UNITS MRXBOX SIZE 90 S WOULD BE A GOOD SELECTION FOR FRESH AIR SUPPLY AND EXTRACT WITH HEAT RECOVERY UP TO 95% AND COME WITH A 5 YEAR WARRANTY

THEY ARE  
320mm deep  
580mm wide  
620mm high  
28kg weight  
SPACE REQUIRED AT TOP TO CONNECT 4 X 125mm DUCTS



ALL HEATING FLOW AND RETURN PIPEWORK TO BE CONCEALED WITHIN VOIDS ALL DROPS TO LOW LEVEL TO BE WITHIN VOIDS ONLY EXPOSED PIPEWORK TO BE THE CONNECTIONS AT THE BOTTOM OF RADIATORS

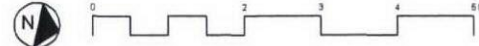
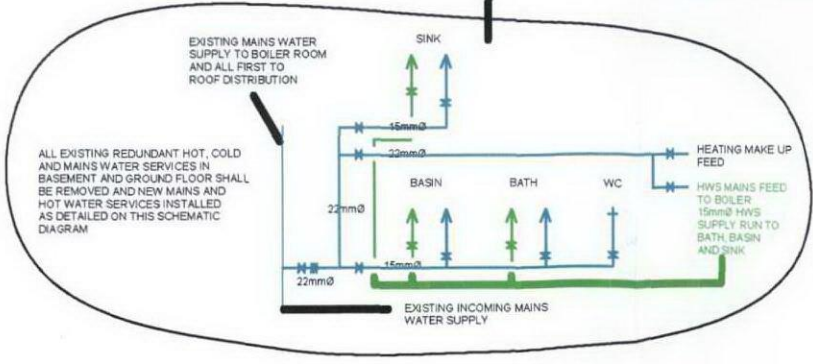
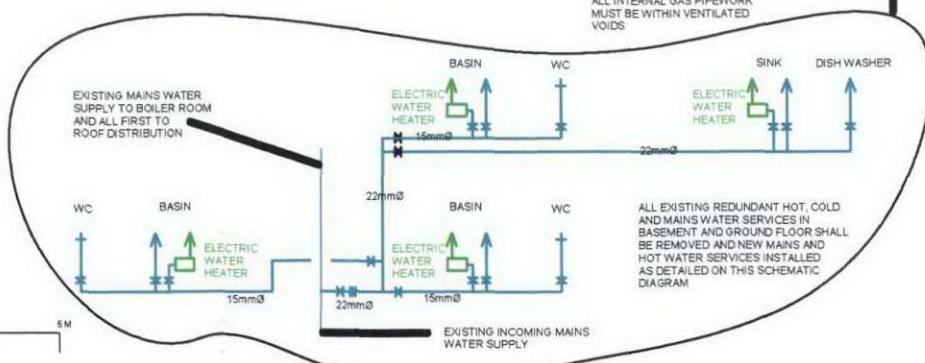
EXISTING BATHROOM SANITARY WARE AND DRAINAGE SERVICES TO REMAIN AS INSTALLED NEW MAINS AND HOT WATER SERVICES SHALL BE INSTALLED AS DETAILED ON SCHEMATIC

FOUR NEW 32mm GAS SUPPLIES RUN TO EXISTING RISER LOCATION ONE NEW 32mm GAS SUPPLY RUN TO NEW OFFICE BOILER PLANT WITH ISOLATION VALVES

N.B. ALL INTERNAL GAS PIPEWORK MUST BE WITHIN VENTILATED VOIDS

EXISTING INCOMING MAINS WATER SUPPLY

N.B. ALL INTERNAL GAS PIPEWORK MUST BE WITHIN VENTILATED VOIDS



# BASEMENT LEVEL

Rev	Author	Checked	Drawn	Date	By
1	JAW	KT	KT	15/01/2010	KT

UNIT & SERVICE ENGINEERS PARK, 30 WEST HILL, BRISTOL, GLYPS 15 3AD  
TELEPHONE 01175 147770  
FAX 01175 147771  
EMAIL: info@unit.co.uk

**B.W.S. PARTNERSHIP**  
BUILDING SERVICES CONSULTANTS

Project: **83-89 KINGS CROSS ROAD LONDON WC1**

Drawn: **CIRCLE ANGLIA**

**BASEMENT LEVEL MECHANICAL SERVICES LAYOUT**

Rev: JAW 2/10  
Drawn by: KT  
Approved by: JAW  
Date: 15/01/10

Drawing Number: BWS-499-501  
EAO Number: BWS-499-501  
Tender Issue: 1/01/10