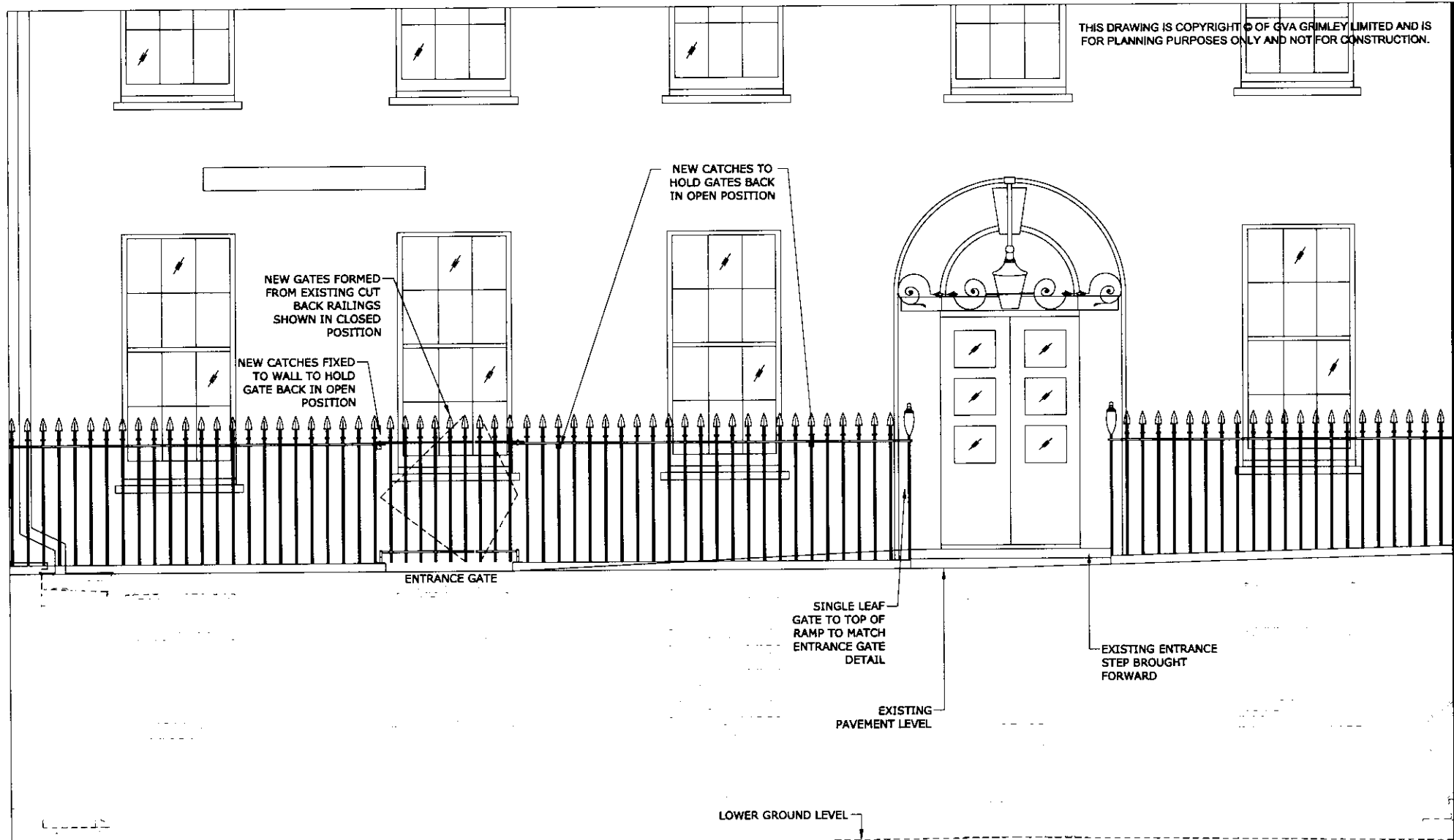


THIS DRAWING IS COPYRIGHT © OF GVA GRIMLEY LIMITED AND IS FOR PLANNING PURPOSES ONLY AND NOT FOR CONSTRUCTION.



**RECEIVED**  
14 APR 2010

**GVA Grimley** 08449 02 03 04  
www.gvagrimley.co.uk

10 Stratton Street,  
London W1J 8JR

PROJECT NAME GRAYS INN, 5 VERULAM BUILDING DDA ACCESS SCHEME	SCALE @ A4 1:50	DRAWN JC	CHECKED SC	DATE 12-04-2010
CLIENT THE HONORABLE SOCIETY OF GRAYS INN	OFFICE ID 02B	PROJECT No. 005071		
DRAWING TITLE PROPOSED ELEVATION SHOWING NEW GATES IN CLOSED POSITION	DRAWING No. PL-04	REV -		

A4, 1:1  
REV REVISION DETAILS BY CHKD DATE

PLANNING