

Plant Schedule

Specimen shrubs/small trees

No.	Species Name	Height	Pot Size	Specification
6 No.	Amelanchier lamarckii	150-175cm	35L	Multi-Stem, min 3No stems
6 No.	Rhus typhina	125-150cm	40-50L	Multi-Stem, min 3No stems

Shrubs

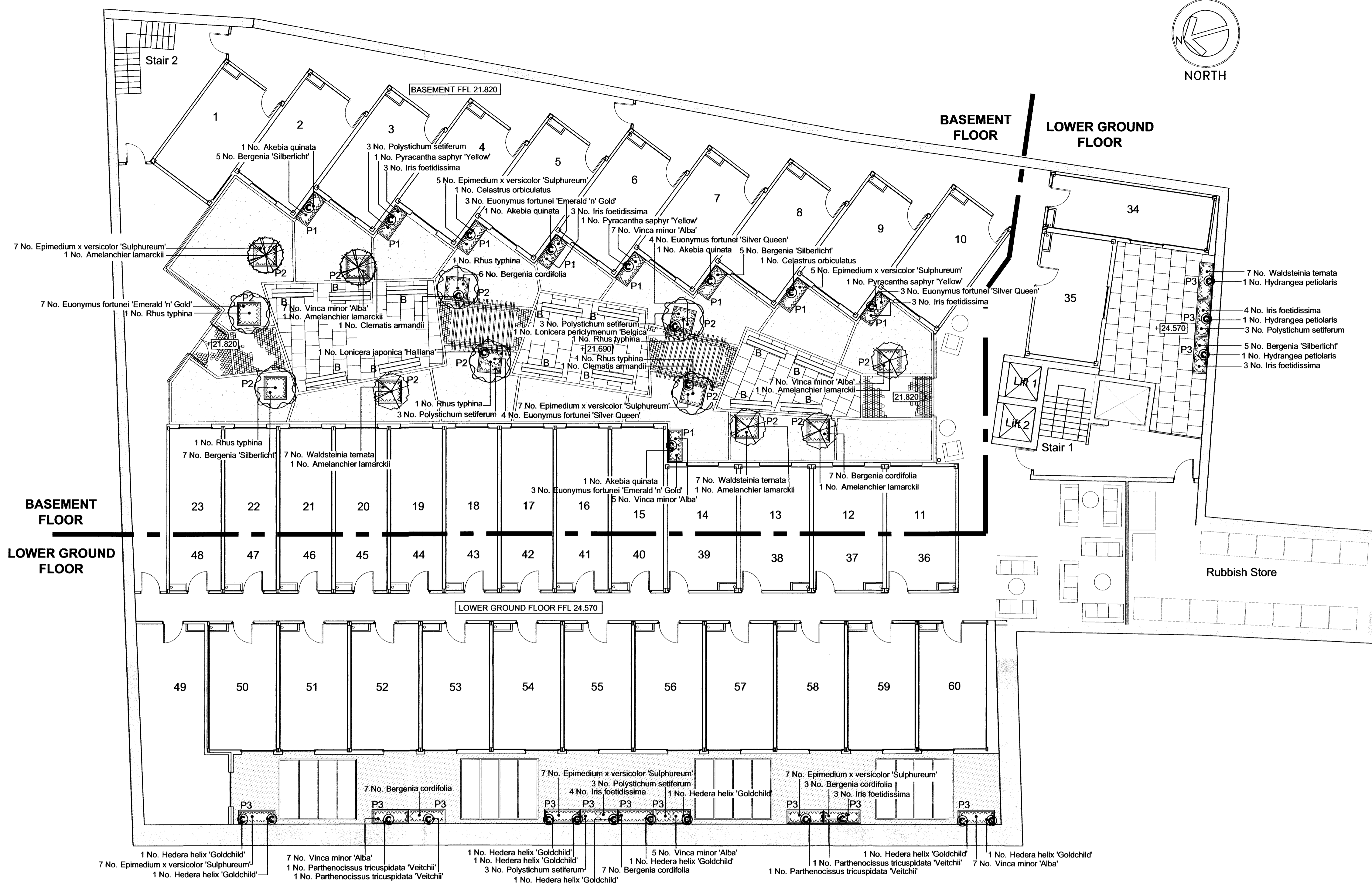
No.	Species Name	Height	Pot Size	Specification
13 No.	Euonymus fortunei 'Emerald 'n' Gold'	25-30cm	2L	
11 No.	Euonymus fortunei 'Silver Queen'	25-30cm	2L	
45 No.	Vinca minor 'Alba'		2L	30-40cm spread

Climbers / wall trained shrubs

No.	Species Name	Height	Pot Size	Specification
4 No.	Akebia quinata	60-80cm	3L	On cane
2 No.	Celastrus orbiculatus	60-80cm	3L	On cane
2 No.	Clematis armandii	80-100cm	7.5L	On cane
9 No.	Hedera helix 'Goldchild'	60-80cm	3L	On cane
3 No.	Hydrangea petiolaris	60-80cm	5-7.5L	On Frame
1 No.	Lonicera japonica 'Halliana'	60-80cm	3L	On cane
1 No.	Lonicera periclymenum 'Belgica'	60-80cm	3L	On cane
4 No.	Parthenocissus tricuspidata 'Veitchii'	80-100cm	3L	On Frame
3 No.	Pyracantha saphyr 'Yellow'	125cm +	15L	On Frame

Herbaceous

No.	Species Name	Pot Size
22 No.	Bergenia 'Siberlicht'	2L
30 No.	Bergenia cordifolia	2L
45 No.	Epimedium x versicolor 'Sulphureum'	2L
23 No.	Iris foetidissima	2L
18 No.	Polystichum setiferum	2L
21 No.	Waldsteinia ternata	1L



KEY

- In-situ white concrete panels with white stones in surface, ground flat. Panels formed inside frame, created using of 100x250x200mm deep Chartres concrete sett edging from Formpave. Purbeck colour and Olden finish.
- Stone chipping surface, aggregate size 10-14mm. Choice of stone to be determined.
- 600x600x50mm PCC slab paving laid in a staggered pattern. Slabs to be from Marshalls Saxon range in Natural colour. Slabs to be framed using Chartres concrete sett edging.
- 100x100x60mm Chartres concrete cobbles from Formpave, laid in a staggered pattern. Cobbles to be in Purbeck colour and Olden finish, being framed using Chartres concrete sett edging.
- Timber pergola over walkways

- Benches, 350 wide x 2000mm long, with timber seat on steel supports. Exact design to be determined.
- Timber planter, 1400x600x1000mm high. Exact design to be determined.
- Timber planter for larger specimens, 1000x1000x1000mm high. Exact design to be determined.
- Timber planter, 1600x600x750mm high. Exact design to be determined.
- Proposed Levels
- Large specimen shrubs
- Shrub and ground cover planting
- Climbing plants / wall trained shrubs

NOTES:

- Climbing plants and wall trained shrubs within courtyard are to be supported using vine eyes and wires. Exact detail to be determined. All other climbing plants proposed will be self supported by aerial roots
- Each timber planter is to be lined with plastic sheet where required, given drainage holes in base, have a 125mm deep layer of clean stone across the bottom for drainage covered by a layer of geotextile filter fabric that wraps up the sides, filled to within 125mm of the top using a soil based peat free compost and after being planted the surface covered with a 75mm depth of cocoa shell mulch.
- Timber planters to be watered using a trickle irrigation system.
- For details of landscape proposals on other floors, read in conjunction with drawings HPG393/Drg 102, Drg 103 and Drg 104

Client: **Hallmark Property Group**

Project: **STUDENT HOUSING HARMOD STREET**

Title: **Landscape Proposals Basement and Lower Ground Floor**

Drg by: **ST** Date: **March 2010** Scale: **1:100 @ A1**

Chkd by: **HPG393/Drg 101** Rev:

1.17 PAINTWORKS, BATH ROAD, BRISTOL, BS4 3EH Tel: 0117 300 5330