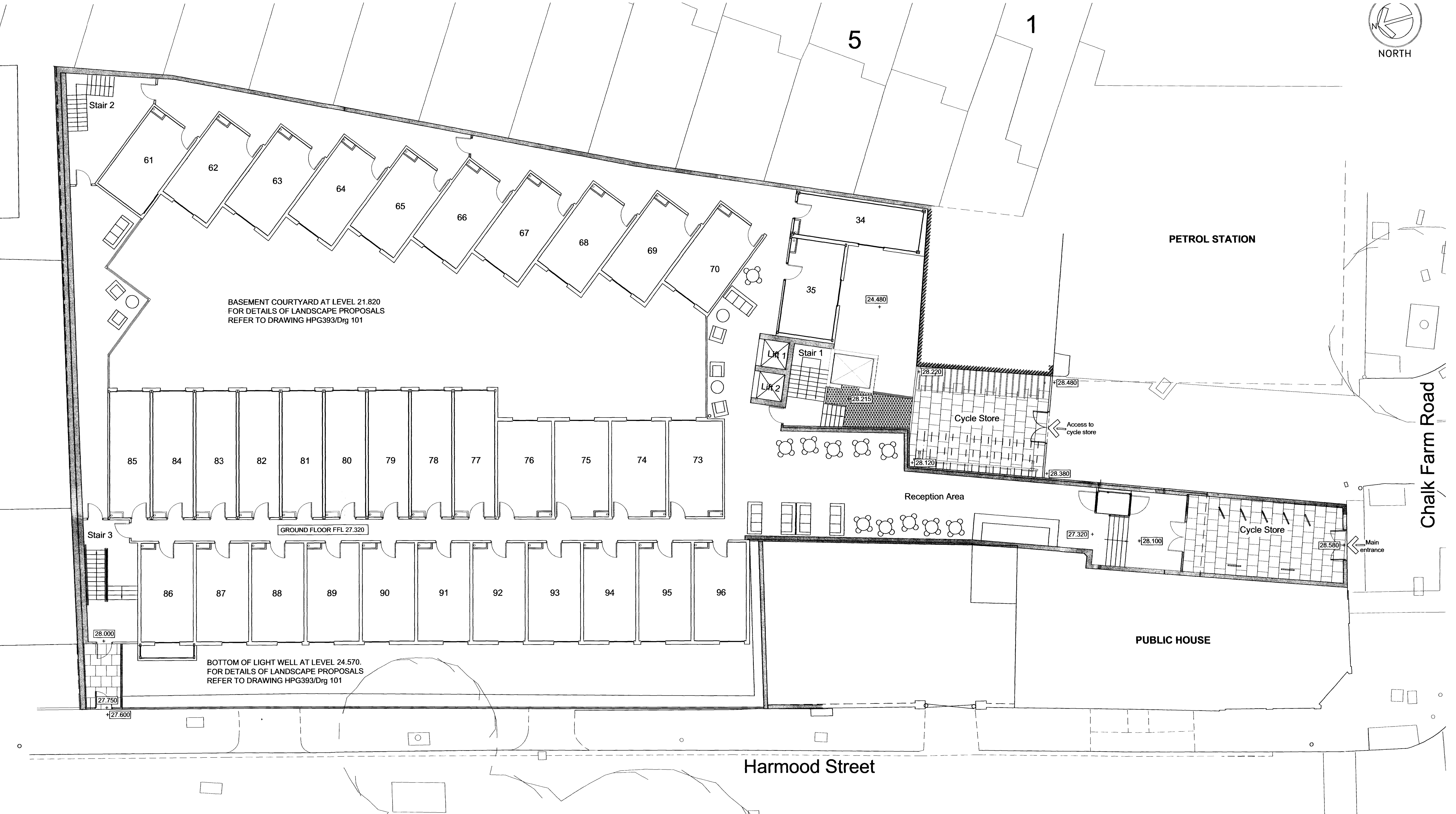


NORTH

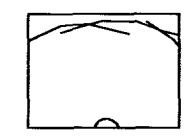
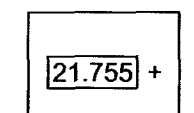
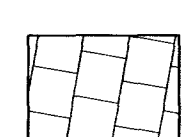
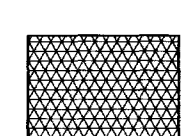


BASEMENT COURTYARD AT LEVEL 21.820  
FOR DETAILS OF LANDSCAPE PROPOSALS  
REFER TO DRAWING HPG393/Drg 101

GROUND FLOOR FFL 27.320

BOTTOM OF LIGHT WELL AT LEVEL 24.570.  
FOR DETAILS OF LANDSCAPE PROPOSALS  
REFER TO DRAWING HPG393/Drg 101

**KEY**

-  Existing trees adjacent to site
-  Proposed Levels
-  600x600x50mm PCC slab paving laid in a staggered pattern. Slabs to be from Marshalls Saxon range in Natural colour.
-  Open mesh galvanised steel walkway and bridge with balustrade

**NOTES:**

- For details of landscape proposals on other floors, read in conjunction with drawings HPG393/Drg 101, Drg 103 and Drg 104



Client: <b>Hallmark Property Group</b>		
Project: <b>STUDENT HOUSING HARMOOD STREET</b>		
Title: <b>Landscape Proposals Ground Floor</b>		
Drg by: <b>ST</b>	Date: <b>March 2010</b>	Scale: <b>1:100 @ A1</b>
Chkd by:	Drg No: <b>HPG393/Drg 102</b>	Rev:
1,17 PAINTWORKS, BATH ROAD, BRISTOL BS4 3EH Tel 0117 300 5330		