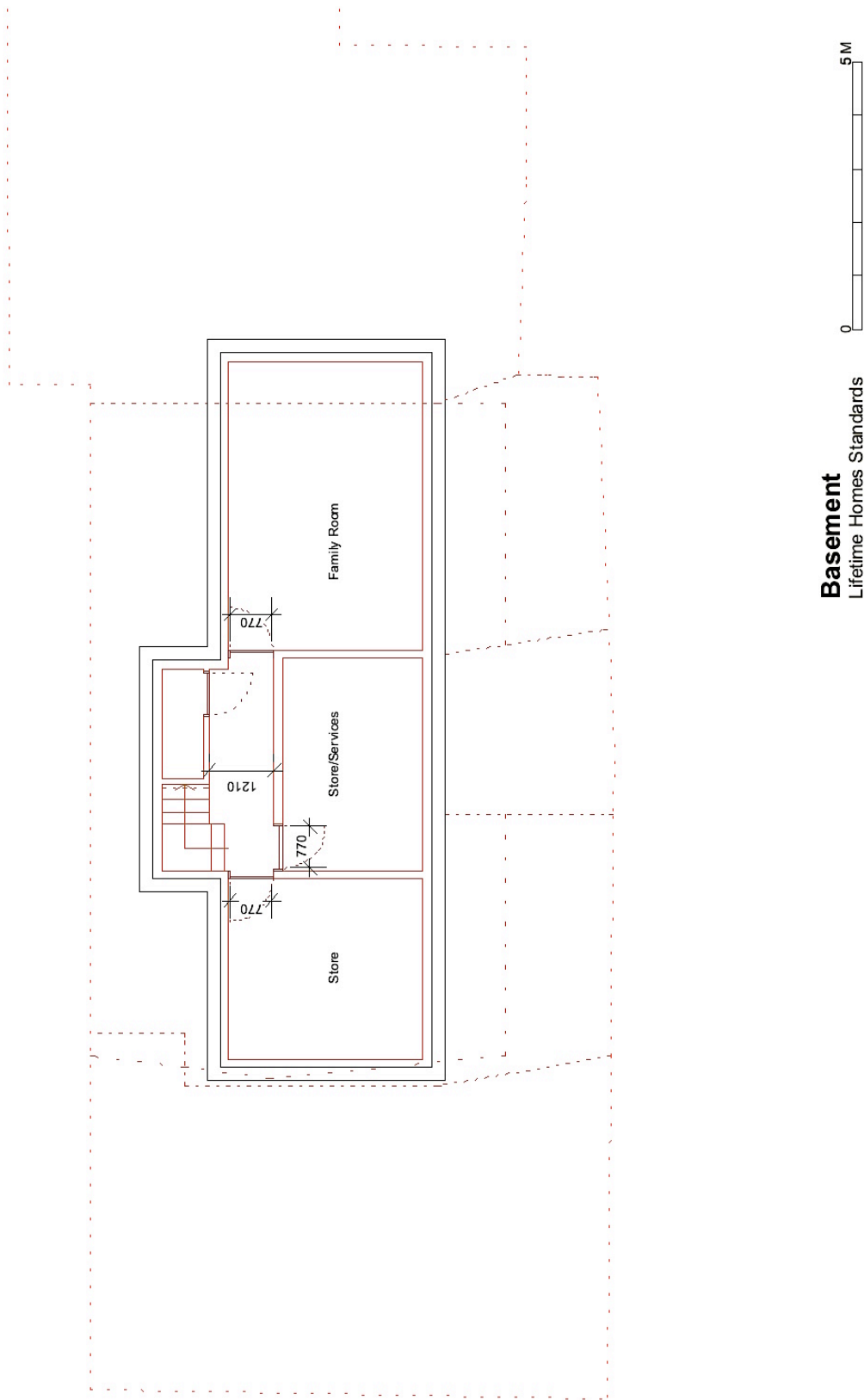


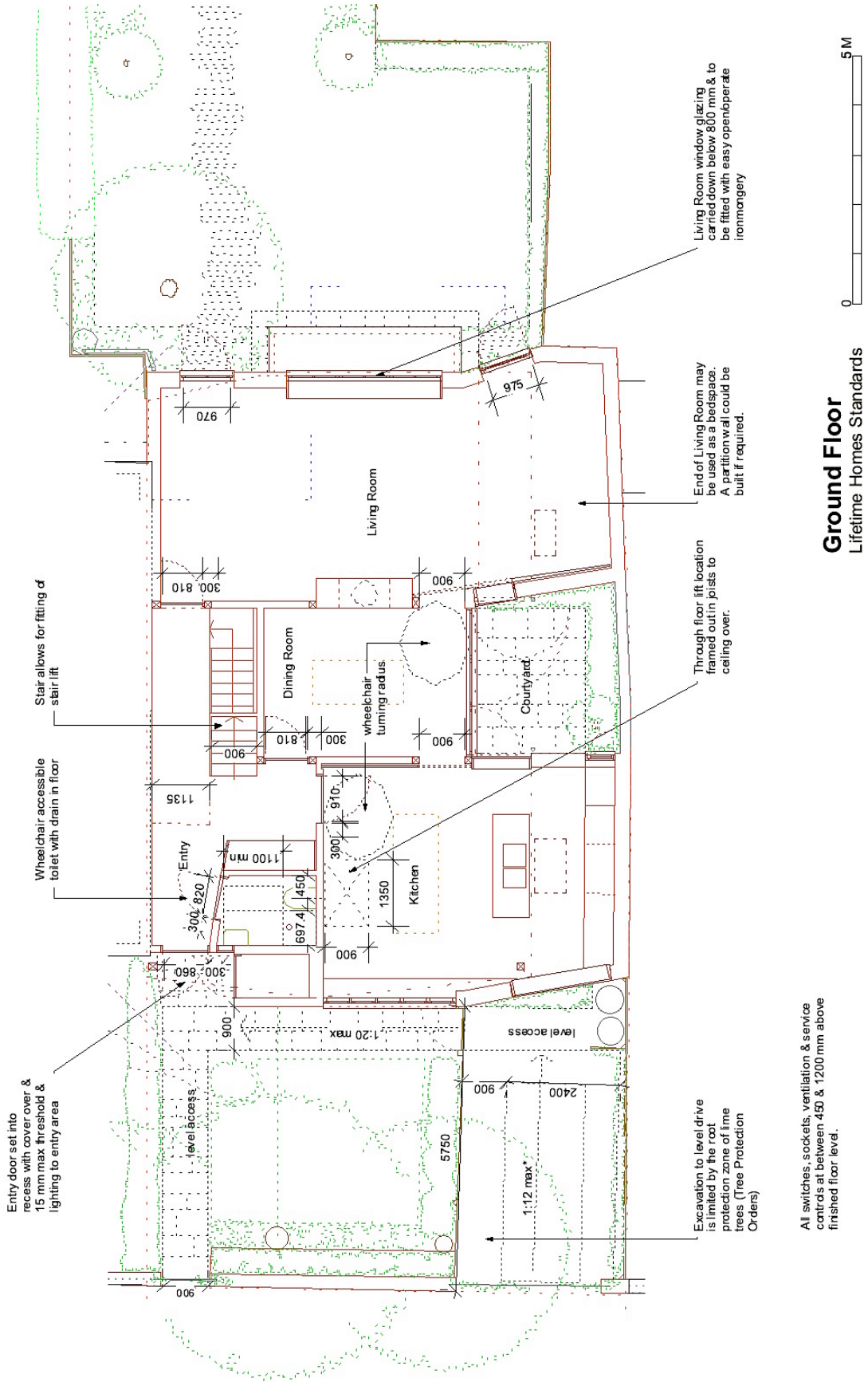
48B Netherhall Gardens
Proposed New House

Planning, Design and Access Statement

4 Lifetime Homes Standards

- The Lifetime Homes Standards have been followed. The annotated drawings following provide details.





Excavation to level drive is limited by the root protection zone of lime trees (Tree Protection Orders)

All switches, sockets, ventilation & service controls at between 450 & 1200 mm above finished floor level.

Woollacott Gilmartin Ltd.,
Company no. 3900277
trading as Woollacott Gilmartin Architects



First Floor
Lifetime Homes Standards

