

Note:- Detail only to be used in conjunction with approved structural assessment from structural engineer

Note
1) O/A frame size = Vitreous sign face size "X" - 10mm

- General Notes**
- This drawing is the copyright of GCP Rail Ltd. and should not be reproduced without prior written approval.
 - This drawing is to be read in conjunction with all relevant Drawings, Specifications, and Contract Documents.
 - This drawing must only be reproduced in colour.
 - All dimensions in millimetres (mm) and all levels are in metres (m). Do not scale from this drawing.
 - For Standard Notes used on Civil/Architectural (Ambience Works) drawings, refer to Drawing No. STD-PAD-P-110-5-01. For Standard Notes used on the Electrical (Ambience Works) drawings, refer to Drawing No. STD-ELE-P-110-5-01.
 - For Symbols and Abbreviations used on the Civil/Architectural (Ambience Works) drawings, refer to Drawing No. STD-PAD-P-110-5-02. For Symbols and Abbreviations used on the Electrical (Ambience Works) drawings, refer to Drawing No. STD-ELE-P-110-5-02.
 - This drawing has been produced without topographical or geometrical survey data. The relative positions of existing structures, station furniture, fixtures, etc., which are not subject to Phase 3 Ambience Works, are shown indicatively. It is the responsibility of the 'User' of this drawing to check and verify the accuracy of the information provided prior to its use. In the event that such verification is not undertaken no liability will be accepted for claims, additional cost or extension of time resulting from any inaccuracies contained within the information provided. All dimensions must be checked on site to ensure the proposed works can be installed correctly and in accordance with the design intent prior to commencing work.
 - All materials and workmanship shall be in accordance with current and specified standards.
 - The systems equipment design which includes Closed Circuit Television Cameras (CCTV), Public Address Speakers (PA), Customer Information Screens (CIS), Next Train Indicators (NTI), Thin Film Transistor Display Screens (TFT), Closed Circuit Television Camera Live Monitor Display Screens (CCTV DS), Public Help Points (PHP) and Induction Loops (IL) is by LOROL's System Designer. New CCTV cameras and PA speakers are shown in the general location indicated on the System Designer's CCTV Desktop Survey drawings. The system equipment locations, where shown, is indicative and are provided for coordination and information purposes only. Lighting columns that support existing operational systems equipment shall not be removed until the new systems equipment is installed and operational. No reliance should be placed upon the accuracy of the systems information provided. Final connections to Systems Equipment to be by LOROL's System Designer. Structural assessment of new or existing structures supporting Systems equipment is by the Systems Designer.
 - Repair and reinstatement / replacement of any existing assets damaged by the 'User' of these documents works is the responsibility of the 'User'. The 'User' shall replace the damaged area / materials with new to a standard no less than equal quality and to the satisfaction of the Engineer. Replacement materials shall be Network Rail compliant. Repair will only be acceptable with prior written approval of the Engineer. The 'User' shall be responsible for all direct and indirect costs associated with such damage.
 - The 'User' of these documents shall be familiar with the 'Designer's Risk Assessment' prior to commencement of any work on site, and shall take all appropriate measures necessary to minimise Health & Safety risks associated with the works.

FRAME SIZE
O/A frame size = Vitreous sign face size "X" - 10mm

Project no.
1036 - 000

Rev	Revision	By	Date	CHK
04	Drawing Status amended	AG	08.12.09	CC
03	Issued for Construction Drawing layout altered	ES	04.11.09	CC
02	Revised to incorporate 'Form It' comments	ES	09.10.09	DJ
01	Minor changes as detailed	ES	19.08.09	DJ
00	Issued for Information	SCB	15.07.09	DJ

Contact

GCP Rail Ltd
42 Tabard Street
London SE1 4JL
t: 020 7407 3047
f: 020 7357 9949
www.gcp.rail.co.uk

partnership

drawing status
STANDARD CONSTRUCTION DETAIL

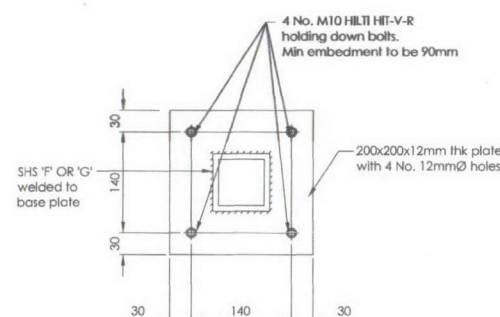
project
client
LOROL
project title
London Overground
Ambience - Standard Details

drawing
drawing title
Signage Foundations and Support Frames
Sheet 1 of 3
scale (A1) date drawn checked
As Noted 08.05.09 ES DJ

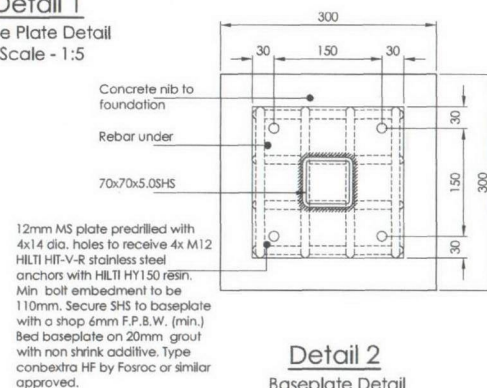
reference
drawing no.
STD-PAD-P-110-5-12
revision
04



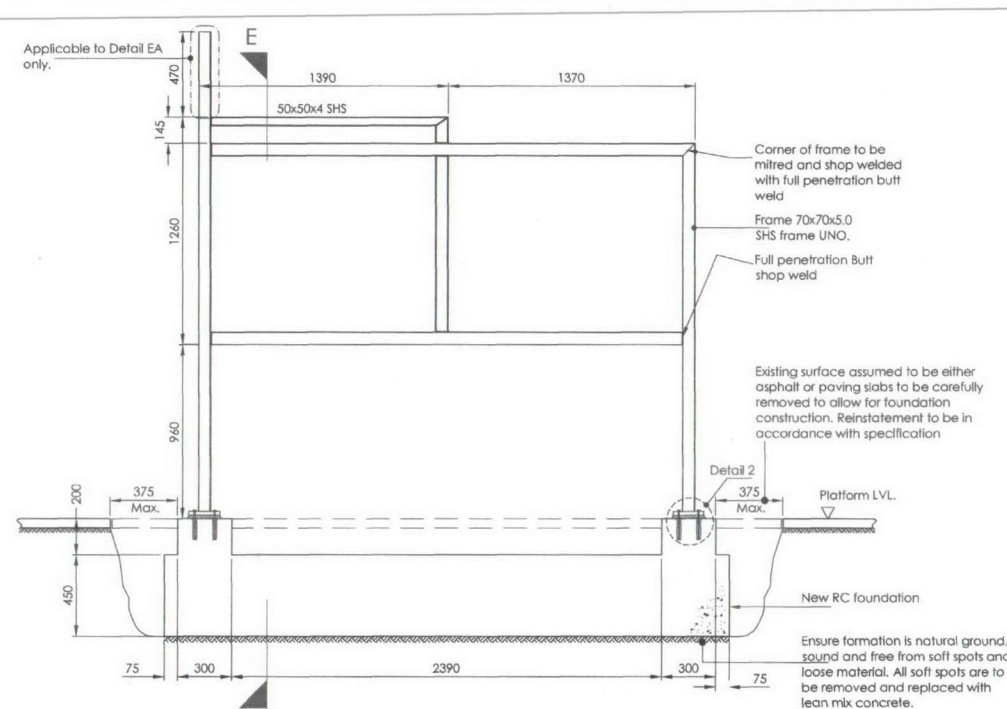
Detail F&G SHS SCHEDULE		
Detail Ref.	Size.	Sign Area
Details F	80x80xSHS	<0.7m ²
Detail G	60x60x5.0 SHS	<0.5m ²



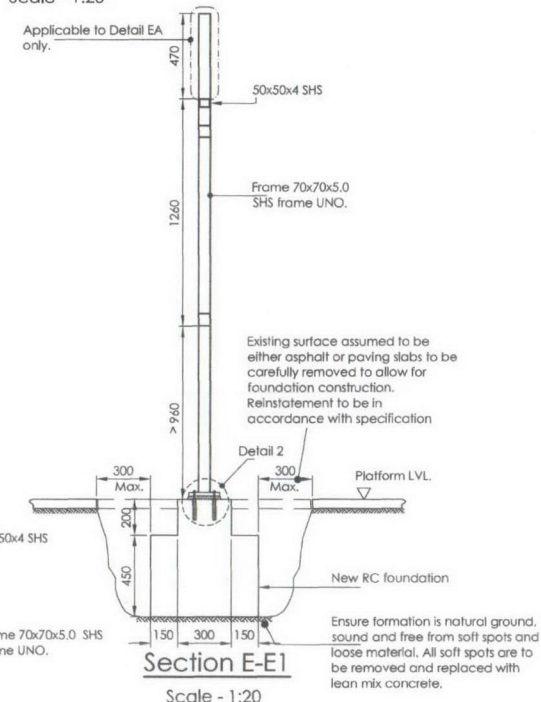
Detail 1
Base Plate Detail
Scale - 1:5



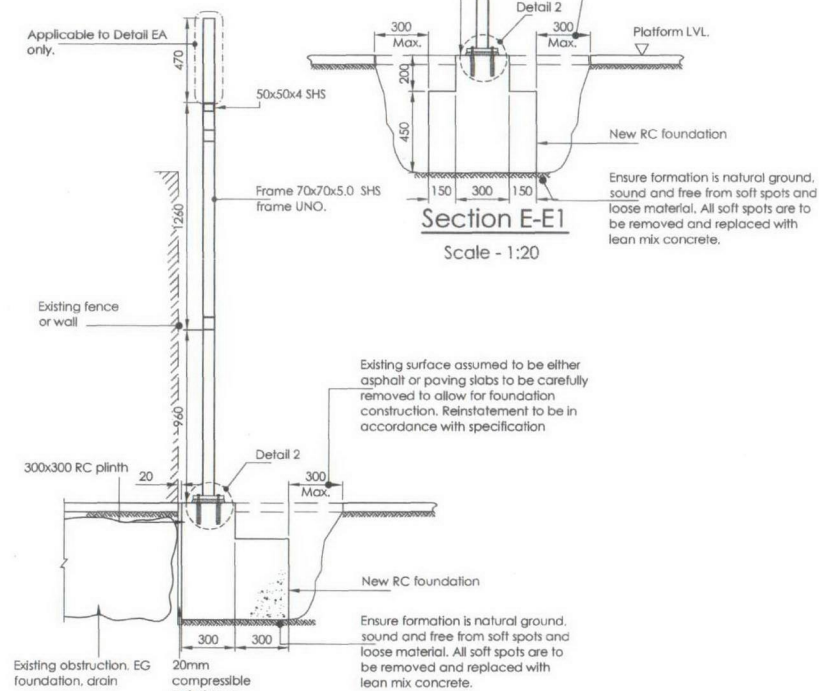
Detail 2
Baseplate Detail
Scale - 1:5



Sign Type E & EA
Scale - 1:20

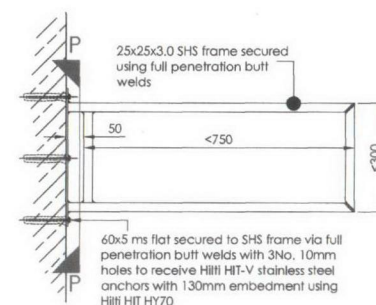


Section E-E1
Scale - 1:20



polystyrene
Section E-E2

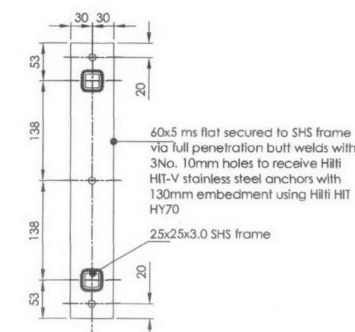
Sign Type E&EA
Applicable when sign is against fence,
wall or buried obstruction
Scale - 1:20



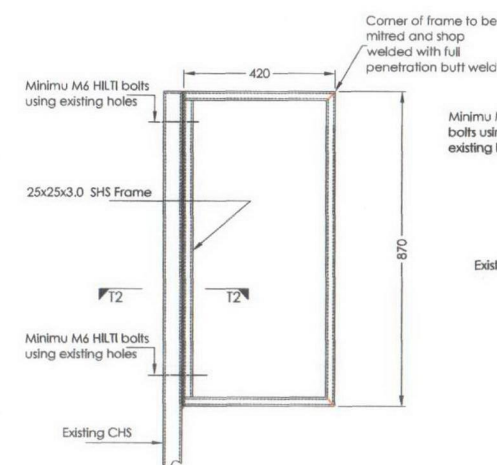
Sign Type P
Wall mounted sign

Scale - 1:10

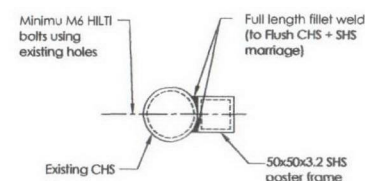
Note:- Detail only to be used in conjunction with approved structural assessment from structural engineer



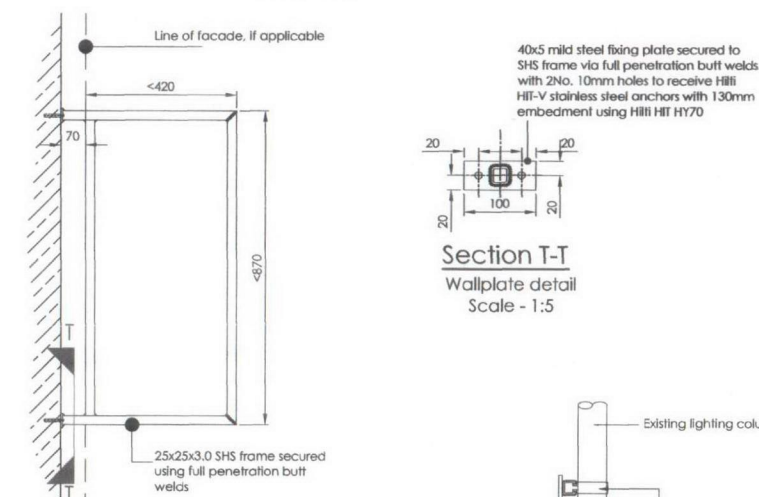
Section P-P
Wallplate detail
Scale - 1:5



T2 - Totem fixing
to existing post
Scale - 1:10



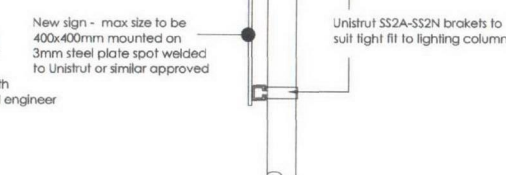
Section T2-T2
Frame to existing post
Scale - 1:5



Sign Type T
Wall mounted sign

Scale - 1:10

Note:- Detail only to be used in conjunction with approved structural assessment from structural engineer



Sign Type D
Typical sign <400X400
Mounted on Lighting Columns

Scale - 1:10

1. This drawing is the copyright of GCP Rail Ltd, and should not be reproduced without prior written approval.
2. This drawing is to be read in conjunction with all relevant Drawings, Specifications, and Conditions of Contract.
3. This drawing must only be reproduced in black.
4. All dimensions in millimetres (mm) and all levels are in metres (m). Do not scale from this drawing.
5. For Standard Notes used on Civil/Architectural (Ambience Works) drawings, refer to Drawing No. STD-LE-10-01, For Standard Notes used on the Electrical (Ambience Works) drawings, refer to Drawing No. STD-LE-10-02.
6. For Symbols and Abbreviations used on the Civil/Architectural (Ambience Works) drawings, refer Drawing No. STD-PAW-10-01, For Symbols and Abbreviations used on the Electrical (Ambience Works) drawings, refer Drawing No. STD-LE-10-02.
7. This drawing has been produced without topographical or geometrical survey data.
8. The position of all structural structures, station furniture, fixtures, etc. which are not subject to these 3 ambience works, are shown in red.
9. It is the responsibility of the 'User' of this drawing to check and verify the accuracy of the information provided prior to its use.
10. The Designer does not accept any liability for any responsibility will be accepted for claims, additional cost or extension of time resulting from the use of this drawing.
11. All dimensions must be checked on site to ensure the proposed works can be installed correctly and in accordance with the design intent and the Commanding work.
12. All materials and workmanship should be in accordance with current and specified standards.
13. The systems equipment designated includes Closed Circuit Television (Camera), Public Address System (PA), Passenger Information Systems (CIS), Next Train Indicator (NTI), Train Information System (TIS), Ticket Vending Machine (TVM), Passenger Display Screens (PDS), Public Help Points (PHP) and Help and Monitor Display Screens (HMS) by CROCS's System Designer.
14. The Camera, PDS, CIS, PA, and NTI are the general location indicator for the system Designer's CIS Desktop Support drawings. The Camera, PDS, CIS, PA, and NTI are the general location and provided for coordination and information purposes only.
15. Lighting columns that support existing operational systems and are not being replaced are shown in red. New equipment is highlighted and operational. No reliance should be placed upon the information of the systems information provided that connections to systems are to be made to the equipment shown in red.
16. The structural assessment of new or existing structures supporting systems is to be done by the System Designer.
17. Repair and replacement / replacement of any existing assets damaged by the 'User' of these documents works is the responsibility of the 'User' of these documents. The 'User' of these documents will be responsible for the cost of replacement of any assets / materials with new to a standard no less than equal quality and to the satisfaction of the Engineer. Replacement materials shall be Network Rail approved. Repair and replacement of any existing assets damaged by the 'User' of these documents shall be the responsibility of the Engineer. The 'User' shall be responsible for all direct and indirect costs associated with the replacement of any assets damaged by the 'User' of these documents shall be the responsibility of the Engineer.
18. The 'User' of these documents shall be familiar with the 'Designer's' Risk Assessment prior to commencement of any work on site, and shall ensure that appropriate measures necessary to minimise Health & Safety risks are included with the work.

FRAME SIZE
O/A frame size = Vitreous sign face size "X" - 10mm

project no.
1036 - 000

1998

02	Drawing Status amended	AG	08.12.09	CC
01	Issued for Construction	ES	04.11.09	CC
00	Issued for Information	ES	09.10.09	DJ

Control

GCP Rail Ltd.

1000

London SE1 4JU
t: 020 7407 3067

www.gcpartnership.co.uk

drawing status

STANDARD CONSTRUCTION DETAIL

project

client

project title
London Overground
Ambience - Standard Deta

growing

drawing title
Signage Foundations and Support
Frames
Sheet 2 of 3

scale (A)	date	drawn	checked
As Noted	08.05.09	ES	DI

reference	
drawing no.	revised
STD-PAD-P-110-5-13	02