

EXISTING SIGNAGE: CAMDEN ROAD - SIGNAGE TO BE REMOVED, REUSED OR ADAPTED																
Location	No.	Sign Name	Sign Code	Fixing / Position	Guidance / Notes	Removed / Reused / Adapted	Reason	Location	No.	Sign Name	Sign Code	Fixing / Position	Guidance / Notes	Removed / Reused / Adapted	Reason	
Station Entrance	1	Cycle Parking	S1/1	post-mounted		✓	to be retained		54	Private	DO1/8	door-mounted		✓	to be retained	
	2	Poster frame: Double Royal		wall-mounted	white poster frame	×	non-standard		55	Keep back behind the line		wall-mounted		×	not applicable	
	3	Poster frame: Double Royal		wall-mounted	white poster frame	×	non-standard		56	Platform station fascia	Temp	suspended on hangers from roof trusses	Overground logo, station name 'Camden Road'	×	temporary	
	4	Station fascia	Temp	mounted above entrance	Overground & National Rail Logo, Station Name 'Camden Road'	×	temporary		57	Platform number (1)	Temp	suspended on hangers from roof trusses	(double-sided)	o	to be relocated	
	5	No smoking/CCTV		wall-mounted		×	to be retained		58	Private	DO1/9	door-mounted		✓	to be retained	
Booking Hall	6	Station Totem	Temp	wall-mounted one side overhead	Overground & National Rail logos, station name 'Camden Road'	×	temporary		59	Poster Frame: Double Royal		wall-mounted	white poster frame	×	non-standard	
	7	Station information of other bus & rail services in vicinity	Temp	mounted above main entrance door		o	to be retained		60	Poster Frame: Double Royal		wall-mounted	white poster frame	×	non-standard	
	8	Poster frame: Double Royal		wall-mounted	white poster frame	×	non-standard		61	Poster Frame: Double Royal		wall-mounted	white poster frame	×	non-standard	
	9	Free-standing poster frame		free-standing		×	not applicable		62	Poster Frame: Double Royal		wall-mounted	white poster frame	×	non-standard	
	10	Free-standing information board		free-standing		✓	to be retained		63	Platform station fascia	Temp	suspended on hangers from roof trusses	Overground logo, station name 'Camden Road'	×	temporary	
	11	Ticket Panel	TKS/1	vending machine		✓	to be retained		64	Way out, directional (2 panels)	Temp	wall-mounted	double-sided	o	to be retained	
	12	Ticket Panel	TKS/2	vending machine		✓	to be retained		65	Poster Frame: Double Royal		wall-mounted		×	not applicable	
	13	Poster frame: Double Royal		wall-mounted	white poster frame	×	non-standard		66	No smoking/Yellow line/CCTV		door-mounted		×	to be retained	
	14	Leaflet rack		wall-mounted	wire rack	×	non-standard		67	Prosecutions		door-mounted		✓	to be retained	
	15	£50 Penalty fare		wall-mounted		×	non-standard		68	No Entry unless authorised		door-mounted		✓	to be retained	
	16	No smoking/CCTV		wall-mounted		×	not applicable		69	Private	DO1/10	door-mounted		✓	to be retained	
	17	Small white board		wall-mounted		×	non-standard		70	Private	DO1/11	door-mounted		✓	to be retained	
	18	Assistance and tickets panel	TK2/1	sticker mounted to window		✓	to be retained		71	Revenue Protection		door-mounted		✓	to be retained	
	19	Assistance panel		sticker mounted to window		✓	to be retained		72	Platform station fascia	Temp	suspended on hangers from roof trusses	Overground logo, station name 'Camden Road'	×	temporary	
	20	Poster frame: Quad Royal		wall-mounted	white poster frame	×	non-standard		73	Private	DO1/12	door-mounted		✓	to be retained	
	21	Poster frame: Double Royal		wall-mounted	white poster frame	×	non-standard		74	Station management team		door-mounted		✓	to be retained	
	22	Poster frame: Quad Royal		wall-mounted	white poster frame	×	non-standard		75	Private	DO1/13	wall-mounted		✓	to be retained	
	23	Poster frame: Double Royal		wall-mounted	white poster frame	×	non-standard		76	Keep back behind the line		wall-mounted		×	not applicable	
	24	Poster frame: Double Royal		wall-mounted	white poster frame	×	non-standard		77	Platform station fascia		Overground logo, station name 'Camden Road'		×	temporary	
25	Poster frame: Double Royal		wall-mounted	white poster frame	×	non-standard		78	Private	DO1/14	door-mounted		✓	to be retained		
26	Private	DO1/1	door-mounted			✓	to be retained	79	Car stop (S) 378		column-mounted on extended bracket		✓	to be retained		
27	Free-standing services update board	FB/1	free-standing			✓	to be retained	80	End-of-platform warning sign	W1/2	fence-mounted		✓	to be retained		
28	Poster frame: Double Royal		wall-mounted	white poster frame	×	non-standard		81	End-of-platform warning sign	W1/3	fence-mounted		✓	to be relocated		
29	Private	DO1/2	door-mounted			✓	to be retained	82	Platform number (2)	Temp	post-mounted	(double-sided)	o	to be relocated		
30	Caution door opens outwards	DO3/1	door-mounted			✓	to be retained	83	Yellow sign No 5		lighting-column-mounted		✓	to be relocated		
31	Poster frame: Double Royal		wall-mounted	white poster frame	×	non-standard		84	Platform station fascia		Overground logo, station name 'Camden Road'		×	temporary		
32	Poster frame: Quad Royal		wall-mounted	white poster frame	×	non-standard		85	Platform station fascia		Overground logo, station name 'Camden Road'		×	temporary		
33	Poster frame: Quad Royal		wall-mounted	white poster frame	×	non-standard		86	Keep back behind the line		fence-mounted		×	not applicable		
34	Way out and platform 1	Temp	wall-mounted	temporary sign	×	not applicable		87	CCTV		lighting-column-mounted		×	not applicable		
35	Private	DO1/3	door-mounted			✓	to be retained	88	Way out, directional	Temp	wall-mounted		o	to be relocated		
36	Platform 1 trains to Richmond and Clapham Junction	Temp	wall-mounted	temporary sign	o	to be retained		89	No smoking	DO2/1	wall-mounted		✓	to be retained		
37	Poster Frame: Double Royal - Line Diagram		wall-mounted	white poster frame	×	non-standard		90	No smoking		mounted on window	Sticker	×	non-standard		
38	Poster frame: Quad Royal		wall-mounted	white poster frame	×	non-standard		91	Platform station fascia	Temp	Overground logo, station name 'Camden Road'		×	temporary		
39	Private	DO1/4	door-mounted			✓	to be retained	92	Poster Frame: Double Royal		white poster frame	white poster frame	×	non-standard		
Under pass	40	Poster frame: Double Royal - Line Diagram		wall-mounted	white poster frame	×	non-standard	93	Poster Frame: Double Royal		white poster frame	white poster frame	×	non-standard		
	41	Platform 2 trains to Stratford, directional	Temp	wall-mounted	temporary sign	×	not applicable	94	Poster Frame: Double Royal		white poster frame	white poster frame	×	non-standard		
	42	Poster Frame: Double Royal		wall-mounted	white poster frame	×	non-standard	95	Poster Frame: Double Royal		white poster frame	white poster frame	×	non-standard		
	43	Platform 2 trains to Stratford, directional	Temp	wall-mounted	temporary sign	o	to be retained	96	CCTV/No smoking		wall-mounted		×	not applicable		
Platform 1	44	No Access to AC Electric trains to No.2 lines		wall-mounted		✓	to be retained	97	Way out, directional (2 panels)	Temp	wall-mounted	double-sided	o	to be retained		
	45	Warning limited clearance		wall-mounted		✓	to be retained	98	Way out, directional	Temp	wall-mounted, overhead on staircase		o	to be retained		
	46	Platform station fascia	Temp	wall-mounted	Overground logo, station name 'Camden Road'	×	temporary	99	Keep back behind the line		wall-mounted		×	not applicable		
	47	End-of-platform warning sign	W1/1	fence-mounted		✓	to be retained	100	Car stop class 378 (S)		wall-mounted at one side on bracket		✓	to be retained		
	48	Private	DO1/5	door-mounted		✓	to be retained	101	Black Car stop sign (S)		lighting-column-mounted		✓	to be relocated		
	49	Caution, Chemical Hazardous material		door-mounted		✓	to be retained	102	End-of-platform warning sign	W1/4	post-mounted		✓	to be retained		
	50	Private	DO1/6	door-mounted		✓	to be retained	103	No Access to AC Electric trains to No.2 lines		post-mounted		✓	to be retained		
	51	Fire exit keep clear		door-mounted		✓	to be retained	104	313 Units pan down No 2 line		post-mounted		✓	to be retained		
	52	Private	DO1/7	door-mounted		✓	to be retained	105	Warning limited clearance		wall-mounted		✓	to be retained		
	53	Neighborhood policing team		door-mounted		✓	to be retained									
Total No. Existing Signs											105	Total No. Removed Signs			52	
												Total No. Reused Signs			43	
												Total No. Adapted Signs			9	

1. This drawing is the copyright of GCP Rail Ltd and should not be reproduced without prior written approval.
2. This drawing is to be read in conjunction with all relevant drawings, specifications and contract documents.
3. This drawing must be read in colour.
4. All dimensions are in millimetres (mm) and all levels are in metres (m). All dimensions and levels are to be checked on site prior to work commencing or preparation of shop or working drawings. All discrepancies are to be brought to the attention of the Engineer for a decision before proceeding with any work. Do not scale from drawings.
5. To be read in conjunction with the following standard Notes and Drawings: civil/architectural notes refer Drawing No. STD-PAD-P-110-5-01. Standard signs refer Drawing No. STD-PAD-P-110-5-01. Signage support and foundations, STD-PAD-P-110-5-12, 13.
6. All Materials and Workmanship shall be in accordance with current and specified standards and the Project Standard Specification.
7. No existing safety signage is to be removed. If temporary removal of existing safety signage is required to complete any works the contractor is to submit a method statement to ensure continuation of existing safety conditions.
8. Each sign has a unique number. ITAN and CBS Outdoor Ltd advertisement boards are outside the scope of works.
9. The user of these documents shall be familiar with the "Designers Risk Assessment" prior to commencement of any work on site and shall take all appropriate measures necessary to minimise Health and Safety risks associated with the works.
10. Signage to be fitted to support structures with standard TIL Mounting System. Coordination between the signage contractor and frame contractor is required.
11. Poster frames to be Mounted to Free Standing Frame Units as per TIL drawing, FSU1000, Free Standing Frame Unit; General Arrangement.

52 - Existing sign to be removed
17 - Existing sign to be reused
9 - Existing sign to be adapted

project no.
1036 - 029

01 Issued for pre construction approval
02 Issued to LOROL for early approval

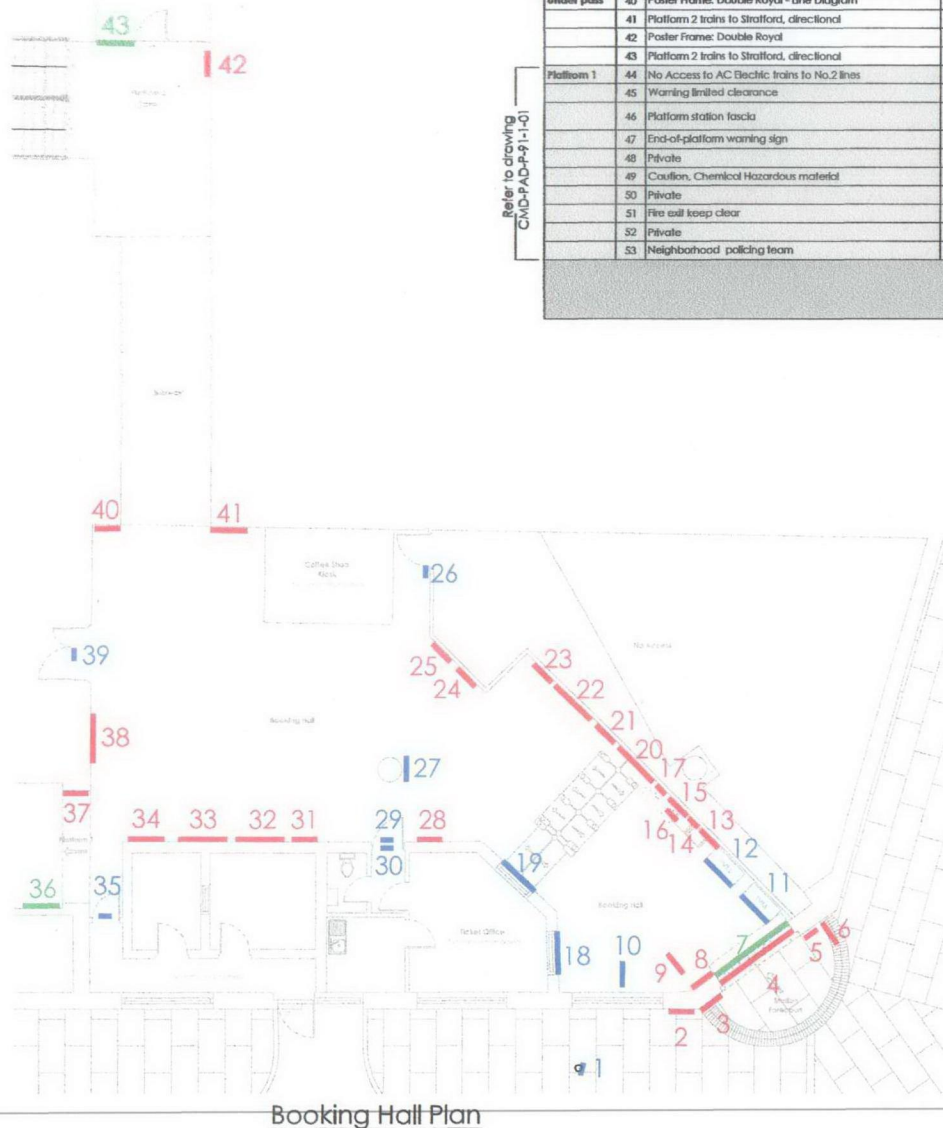
GCP Rail Ltd
42 Tobard Street
London SE1 4JU
t: 020 7407 3067
f: 020 7357 9949
www.gcp.rail.co.uk
partnership

drawing status
PRE CONSTRUCTION APPROVAL

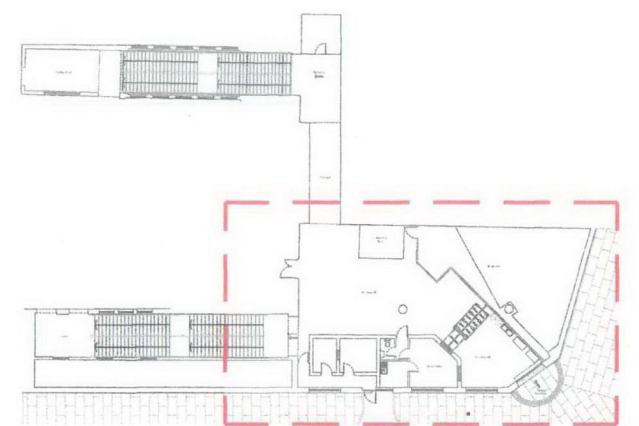
project client
LOROL
project title
London Overground
Camden Road Station

drawing title
Proposed Station Signage
Booking Hall Plan
to be removed - Sheet 1 of 3
scale (A1)
1:50
date
12.01.10
drawn
DLD
checked
MT

reference
drawing no.
CMD-PAD-P-93-1-01
revision
01



Note:
All existing stickers, except Fire exit,
to be removed and area cleaned



Booking Hall Key Plan
N.T.S.

Refer to drawing CMD-PAD-P-93-102

PROPOSED SIGNAGE: CAMDEN ROAD STATION									
Sign Code	Ref. No.	Sign Name	No. Reused	No. New	No. Adapted	Fixing / Position	Guidance / Notes		
Station Entrance									
DR/1 & DR/2		Poster frame: Double Royal	-	2	-	wall-mounted	Jansen poster frame		
F1/1		Station fascia	-	1	-	mounted above door frame of entrance	Overground logo, station name "Camden Road"		
P/1 & P/2		No smoking / No alcohol / CCTV	-	2	-	wall-mounted			
S1/1	1	Cycle Parking	1	-	-	post-mounted, fixed to existing post	to be retained		
T1/1		Station totem, double-sided	-	1	-	wall-mounted, fixed to new bracket at one side	Overground logo, station name, "Camden Road" double-sided		
Booking Hall									
DR/3 - DR/8		Poster frame: Double Royal	-	6	-	wall-mounted	Tf1 poster frame		
DO1/1 - DO1/4	26, 29, 35 & 39	Private	4	-	-	door mounted	to be retained		
DO3/1	30	Caution door opens outwards	1	-	-	door mounted	to be retained		
D1/1		Platform 1 "Trains to Richmond & Clapham Junction"	-	1	-	wall-mounted, overhead			
D2/1		Platform 2 "Trains to Stratford"	-	1	-	wall-mounted, overhead			
FB/1	10 & 27	Free standing services update board	2	-	-	free standing within entrance area	Dr poster frame on reverse side		
HP1/1		Help point identifier	-	1	-	wall-mounted, fixed at one side	Vertical version, double sided		
LD1/1		Line Diagram, directional	-	1	-	wall-mounted along side LD2/1			
LD2/1		Line Diagram, directional	-	1	-	wall-mounted along side LD1/1			
LR/1		Leaflet rack	-	1	-	wall-mounted			
P/3		No smoking / No alcohol / CCTV	-	1	-	wall-mounted			
QR/1 & QR/5		Poster frame: Quad Royal	-	5	-	4 wall-mounted and 1 mounted on new brackets again diagonal wall	Tf1 poster frame		
TK2/1	18	Assistance & Tickets panel	1	-	-	mounted above ticket counter window			
TK4/1		£50 Penalty fare	-	1	-	wall-mounted			
TK5/1 & TK5/2	11 & 12	Ticket panel	2	-	-	ticket vending machine	to be retained		
	7	Local directions and bus information	-	-	1	mounted above door frame of entrance doorway (internally)	to be retained		
	19	Assistance panel	1	-	-	mounted above ticket counter window	to be retained		
	36	Platform 1 "Trains to Richmond & Clapham Junction"	-	-	1	wall-mounted in stair case area	to be retained		
Under Pass									
	43	Platform 2 "Trains to Stratford"	-	-	1	wall-mounted	to be retained		
Platform 1									
DR/9 & DR/10		Poster frame: Double Royal	-	2	-	wall-mounted	Tf1 poster frame		
DO2/2		No smoking	-	1	-	wall-mounted			
F2/1 - F2/3		Station fascia	-	3	-	mounted from droppers under existing canopy	Overground logo, station name "Camden Road" new droppers required		
HP1/2		Help point identifier	-	1	-	wall-mounted	Horizontal version, double sided		
LD3/1		Basic Line diagram	-	1	-	wall-mounted	Trains to Richmond & Clapham Junction, Platform 1		
P/4, P/5 & P/6		No smoking / No alcohol / CCTV	-	3	-	wall-mounted			
PS1/1 & PS1/2		Priority seating	-	2	-	woodro seat-mounted			
QR/6		Poster frame: Quad Royal	-	1	-	wall-mounted	Tf1 poster frame		
R1/1		New station roundel and way out	-	1	-	wall-mounted	wall-mounted roundel with no smoking sign above		
R2/1		New station roundel and way out	-	1	-	wall-mounted	wall-mounted roundel with no smoking sign above		
W1/1 - W1/2	47 & 80	End-of-platform warning	2	-	-	W1/1 wall-mounted at one edge on existing bracket, W1/2 barrier-mounted	Standard version (square edge) W1/1 to be retained W1/2 to be relocated		
	44	No Access to AC Electric trains to No. 2 lines	1	-	-	wall-mounted	to be retained		
	45	Warning limited clearance	1	-	-	wall-mounted	to be retained		
DO1/5 - DO1/14	48, 50, 52, 54, 58, 60, 70, 73, 75 & 78	Private	10	-	-	door-mounted			
	49	Caution, Chemical Hazardous material	1	-	-	door-mounted	to be retained		
	51	Fire exit keep clear	1	-	-	door-mounted	to be retained		
	53	Neighborhood policing team	1	-	-	door-mounted	to be retained		
	64	Way out sign, directional	-	-	1	wall-mounted, overhead, double sided	to be adapted and re-mounted on existing brackets.		
	57	Station platform No.1	-	-	1	mounted from droppers under existing canopy, double sided	to be adapted relocated and re-mounted using existing droppers		
	67	Prosecution	1	-	-	door-mounted	to be retained		
	68	No entry unless authorised	1	-	-	door-mounted	to be retained		
	71	Revenue Protection	1	-	-	door-mounted	to be retained		
	74	Station management team	1	-	-	door-mounted	to be retained		
	79	Car Stop [S] class 378	1	-	-	to be relocated to new position in line with NLRP design	to be retained		
Platform 2									
DR/11 & DR/12		Poster frame: Double Royal	-	2	-	fence-mounted	Jansen poster frame		
DO2/1	89	No smoking	1	-	-	wall-mounted	to be retained		
HP1/3		Help point identifier	-	1	-	lighting column mounted	Horizontal version, double sided		
LD4/1		Basic Line diagram	-	1	-	part of platform mounted unit	Trains to Stratford, Platform 2		
P/7, P/8 & P/9		No smoking / No alcohol / CCTV	-	3	-	mounted to new lighting columns and P/8 wall-mounted			
PS1/3 & PS1/4		Priority seating	-	2	-	woodro seat-mounted			
QR/7		Poster frame: Quad Royal	-	1	-	wall-mounted	Jansen poster frame		
R1/2 - R1/4		New station roundel and way out	-	3	-	fence-mounted	fence-mounted roundel with no smoking sign above		
R2/2 & R2/3		New station roundel and way out	-	2	-	fence-mounted	fence-mounted roundel with no smoking sign above		
W1/3 - W1/4	81 & 102	End-of-platform warning	2	-	-	W1/3 fence-mounted, W1/4 wall-mounted	Standard version (square edge) W1/3 to be relocated W1/4 to be retained		
	82	Station platform No.2 double sided	-	-	1	mounted to existing redundant lighting column	to be retained		
	83	Yellow sign No.5	1	-	-	mounted to existing lighting column	to be retained		
	88	Way out, directional	-	-	1	wall mounted	To be adapted and replaced in the same position		
	98	Way out, directional	-	-	1	wall mounted, overhead in staircase	to be retained		
	100	Car Stop [S] 378 class	1	-	-	post-mounted	to be retained		
	97	Way out sign, directional	-	-	1	wall-mounted, overhead, double sided	to be adapted and re-mounted on existing brackets.		
	101	Car Stop Black [S]	1	-	-	fence-mounted	to be retained		
	103	No Access to AC Electric trains to No.2 lines	1	-	-	post-mounted	to be retained		
	104	313 Units pan down No 2 line	1	-	-	post-mounted	to be retained		
	105	Warning limited clearance	1	-	-	wall-mounted	to be retained		
Total No. Proposed Signs (Revised+New+Adapted)			43	56	9	108			

TOTAL NO. PROPOSED SIGNS: CAMDEN ROAD STATION					
Sign Code	Existing Ref. No.	Sign Name	No. Reused	No. New	Adapt
DR/1-DR/12		Poster frame: Double Royal	-	12	-
DO1/1 - DO1/14	26, 29, 35, 39, 48, 50, 52, 54, 58, 60, 70, 73, 75 & 78	Private	14	-	-
DO2/1 & DO2/2	89	No smoking	1	1	-
DO3/1	30	Caution door opens outwards	1	-	-
D1/1		Platform 1 "Trains to Richmond & Clapham Junction"	-	1	-
D2/1		Platform 1 "Trains to Stratford"	-	1	-
FB/1	10 & 27	Free standing update board	2	-	-
F1/1		Station fascia	-	1	-
F2/1 - F2/3		Station fascia for platform	-	3	-
HP1/1 - HP/3		Help point identifier, horizontal	-	3	-
LD1/1		Directional line diagram	-	1	-
LD2/1		Directional line diagram	-	1	-
LD3/1		Basic line diagram	-	1	-
LD4/1		Basic line diagram	-	1	-
LR/1		Leaflet rack	-	1	-
P/1 - P/9		No smoking / No alcohol / CCTV	-	9	-
PS1/1 - PS1/4		Priority seating	-	4	-
QR/1 & QR/7		Poster frame: Quad Royal	-	7	-
R1/1 - R1/4		Fence/wall mounted roundels & way out	-	4	-
R2/1 - R2/3		Fence/wall mounted roundels & way out	-	3	-
S1/1	1	Cycle parking	1	-	-
T1/1		Station totem double-sided	-	1	-
TK2/1	18	Assistance & Ticket panel	1	-	-
TK4/1		£50 Penalty fare	-	1	-
TK5/1 & TK5/2	11 & 12	Ticket panel	2	-	-
W1/1 - W1/4	47, 80, 81 & 102	End-of-warning	4	-	-
	19	Assistance panel	1	-	-
	79 & 100	Car Stop [S] class 378	2	-	-
	7	Local directions and bus information	-	-	1
	36	Platform 1 "Trains to Richmond & Clapham Junction"	-	-	1
	43	Platform 1 "Trains to Stratford"	-	-	1
	44	No Access to AC Electric trains to No.2 lines	1	-	-
	45	Warning limited clearance	1	-	-
	49	Caution, chemical hazardous materials	1	-	-
	51	Fire exit keep clear	1	-	-
	53	Neighborhood policing team	1	-	-
	64	Way out sign, directional (2 panels)	-	-	1
	57	Station platform No.1 double sided	-	-	1
	67	Prosecution	1	-	-
	68	No entry unless authorised	1	-	-
	71	Revenue Protection	1	-	-
	74	Station management team	1	-	-
	82	Station platform No. 2 double sided	-	-	1
	83	Yellow sign No.5	1	-	-
	88	Way out, directional	-	-	1
	95	Way out, directional	-	-	1
	97	Way out sign, directional (2 panels)	-	-	1
	101	Black Car Stop [S]	1	-	-
	103	No Access to AC Electric trains to No.2 lines	1	-	-
	104	313 Units pan down No 2 line	1	-	-
	105	Warning limited clearance	1	-	-
TOTAL:			43	56	9

1. This drawing is the copyright of GCP Rail Ltd and should not be reproduced without prior written approval.
2. This drawing is to be read in conjunction with all relevant drawings, specifications and contract documents.
3. This drawing must be read in colour.
4. All dimensions are in millimetres (mm) and all levels are in metres (m). All dimensions and levels are to be checked on site prior to work commencing or preparation of shop or working drawings. All discrepancies are to be brought to the attention of the Engineer for a decision before proceeding with any work. Do not scale from drawings.
5. To be read in conjunction with the following standard Notes and Drawings: civil/architectural notes refer Drawing No. STD-PAD-P-110-5-01. Standard signs refer Drawing No. STD-PAD-P-90-5-01. Signage support and foundations, STD-PAD-P-110-5-12, 13.
6. All Materials and Workmanship shall be in accordance with current and specified standards and the Project Standard Specification.
7. No existing safety signage is to be removed. If temporary removal of existing safety signage is required to complete any works the contractor is to submit a method statement to ensure continuation of existing safety conditions.
8. Each sign has a unique number. TITAN and CBS Outdoor Ltd advertisement boards are outside the scope of works.
9. The user of these documents shall be familiar with the "Designers Risk Assessment" prior to commencement of any work on site and shall take all appropriate measures necessary to minimise Health and Safety risks associated with the works.
10. Signage to be fitted to support structures with standard TIL Mounting System. Coordination between the signage contractor and frame contractor is required.
11. Poster frames to be mounted to Free Standing Frame Units as per TfL drawing, FSU1000, Free Standing Frame Unit: General Arrangement.

QR/1 - Existing sign to be reused
LD2/1 - Proposed new sign
P/9 - Existing sign to be adapted

project no.
1036 - 029

01 Issued for pre construction approval
02 Issued to LOROL for only approval

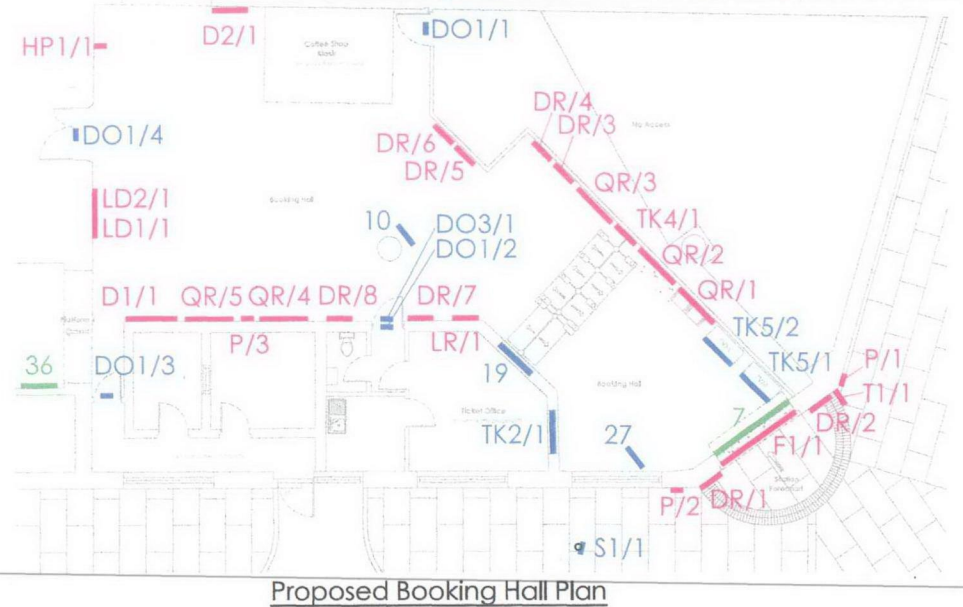
GCP Rail Ltd
42 Tabard Street
London SE1 4JG
t: 020 7407 5067
f: 020 7357 9949
www.gcpairtnership.co.uk
partnership

drawing status
PRE CONSTRUCTION APPROVAL

client
LOROL
project title
**London Overground
Camden Road Station**

drawing title
**Proposed Station Signage
Booking Hall Plan - Signage
Sheet 2 of 3**
scale (A1)
1:50
date
12.01.10
drawn
DLD
checked
MT

drawing no.
CMD-PAD-P-93-102
revision
01

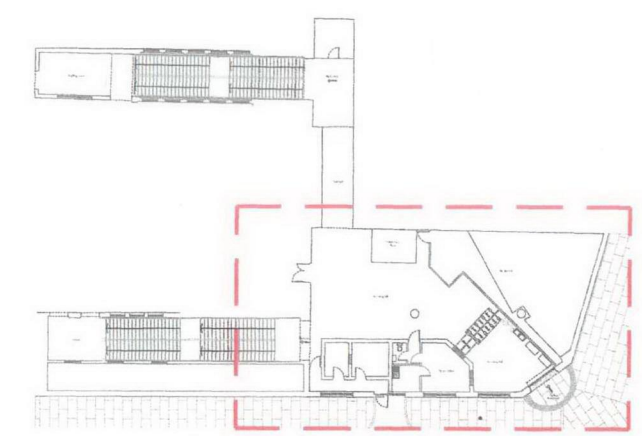


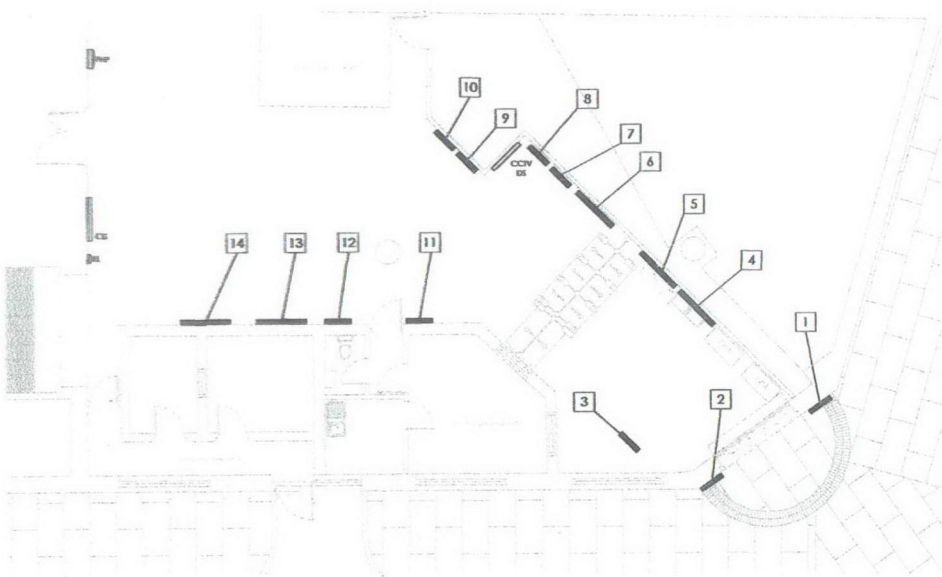
Proposed Booking Hall Plan

Sign Categories:

A - Additional sign	F - Fascia	R - Roundel
C - Confirmation sign	HP - Help Point Identifier sign	S - Supplementary sign
CS - Car Stop sign	LD - Line Diagram	T - Totem
D - Directional sign	LR - Leaflet Rack	TK - Ticketing sign
DO - Door sign	P - Prohibition sign	W - Warning sign
DR - Double Royal poster frame	QR - Quad Royal poster frame	FB - Free-standing board
		WO - Way Out sign

Xx/7 - sign code
Xx - unique number
7 - sign type number
X - sign category code





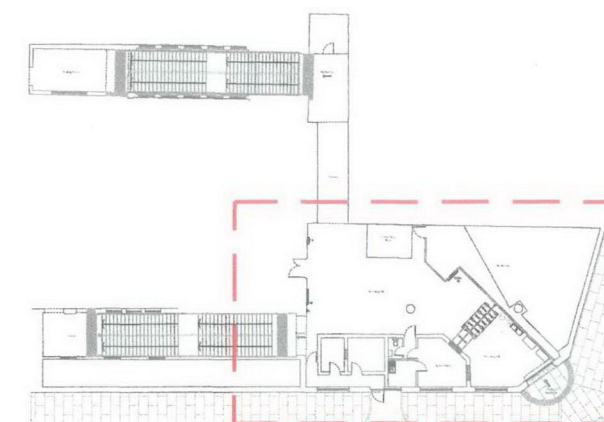
Booking Hall Plan

Refer to drawing
CMD-PAD-P-93-1-03

PROPOSED POSTER FRAMES: CAMDEN ROAD				
Location	Poster Ref. No.	Application	Poster Frame Type	Size
Station Entrance	1	Welcome poster	Jansen (new)	DR
	2	LO Engineering works	Jansen (new)	DR
Booking Hall	3	LO circuit 7 - Investment message	TB (ex.)	DR
	4	LO Timetable x 2 directions	TB (new)	QR
	5	Continuing your journey	TB (new)	QR
	6	London connections	TB (new)	QR
	7	Welcome poster	TB (new)	DR
	8	Performance report	TB (new)	DR
	9	Timetable changes	TB (new)	DR
	10	LO circuit 2 - Bus replacement information	TB (new)	DR
	11	TfL circuit 1 - Oyster message	TB (new)	DR
	12	LO circuit 3 - Fares change information	TB (new)	DR
	13	LO circuit 5 - Closures information/LO circuit 4 - Investment message	TB (new)	QR
	14	Continuing your journey	TB (new)	QR
Platform 1	15	LO Engineering works	TB (new)	DR
	16	London connections	TB (new)	QR
Platform 2	17	LO Timetable (trains to Richmond and Clapham Junction) and performance report	TB (new)	DR
	18	London connections	Jansen (new)	QR
	19	LO Timetable (trains to Stratford) and performance report	TB (new)	DR
	20	LO Engineering works	TB (new)	DR
Total No. Quad Royal Poster Frames (QR)				7
Total No. Double Royal Poster Frames (DR)				13
TOTAL				20

NOTES:

- External poster frames on open platforms or station forecourts etc. are to be replaced with new style JANSEN poster frames.
- Internal poster frames (i.e. in Booking Hall and/or Overbridge) plus frames sheltered by platform canopies are to be TFL poster frames.



Booking Hall Key Plan
N.T.S.

general notes

- This drawing is the copyright of GCP Rail Ltd and should not be reproduced without prior written approval.
- This drawing is to be read in conjunction with all relevant drawings, specifications and contract documents.
- This drawing must be read in colour.
- All dimensions are in millimetres (mm) and all levels are in metres (m). All dimensions and levels are to be checked on site prior to work commencing or preparation of shop or working drawings. All discrepancies are to be brought to the attention of the Engineer for a decision before proceeding with any work. Do not scale from drawings.
- To be read in conjunction with the following standard Notes and Drawings: civil/architectural notes refer Drawing No. STD-PAD-P-110-5-01, Standard signs refer Drawing No. STD-PAD-P-90-5-01, Signage support and foundations, STD-PAD-P-110-5-12, 13.
- All Materials and Workmanship shall be in accordance with current and specified standards and the Project Standard Specification.
- No existing safety signage is to be removed. If temporary removal of existing safety signage is required to complete any works the contractor is to submit a method statement to ensure continuation of existing safety conditions.
- Each sign has a unique number. TITAN and CBS Outdoor Ltd advertisement boards are outside the scope of works.
- The user of these documents shall be familiar with the "Designers Risk Assessment" prior to commencement of any work on site and shall take all appropriate measures necessary to minimise Health and Safety risks associated with the works.
- Signage to be fitted to support structures with standard TFL Mounting System. Coordination between the signage contractor and frame contractor is required.
- Poster frames to be Mounted to Free Standing Frame Units as per TFL drawing, FSU1000, Free Standing Frame Unit: General Arrangement.

- Proposed poster frame position
- Proposed poster frame reference number

project no.
1036 - 029

01 Issued for pre construction approval
02 Issued to LOROL for early approval

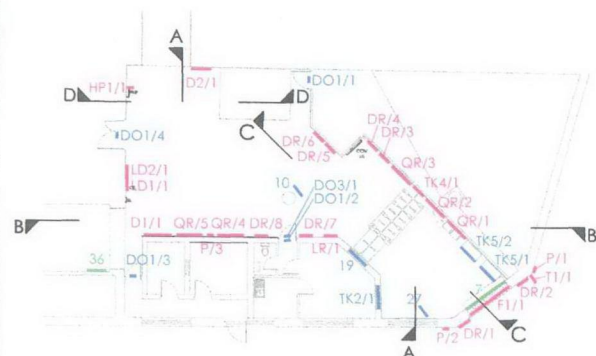
GCP Rail Ltd
42 Tabard Street
London SE1 4JU
t: 020 7407 3947
f: 020 7357 9949
www.gcpartnership.co.uk

drawing status
PRE CONSTRUCTION APPROVAL

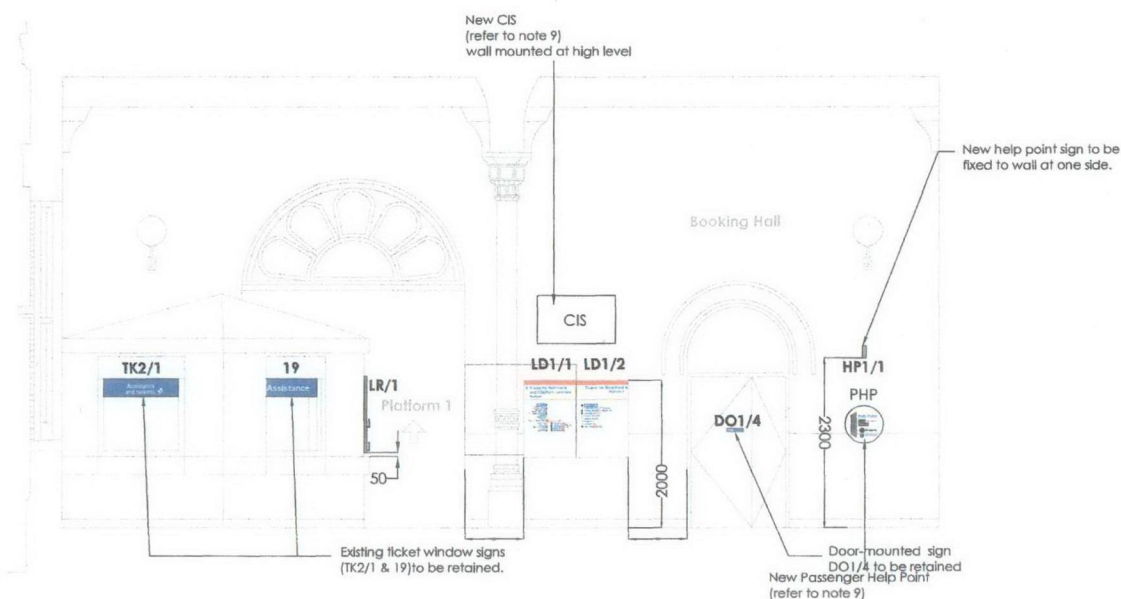
client
project title
LOROL
London Overground
Camden Road Station

drawing title
Proposed Station Signage
Booking Hall - Poster Frame Plan
Sheet 3 of 3
scale (A1) 1:50
date 12.01.10
drawn DLD
checked MT

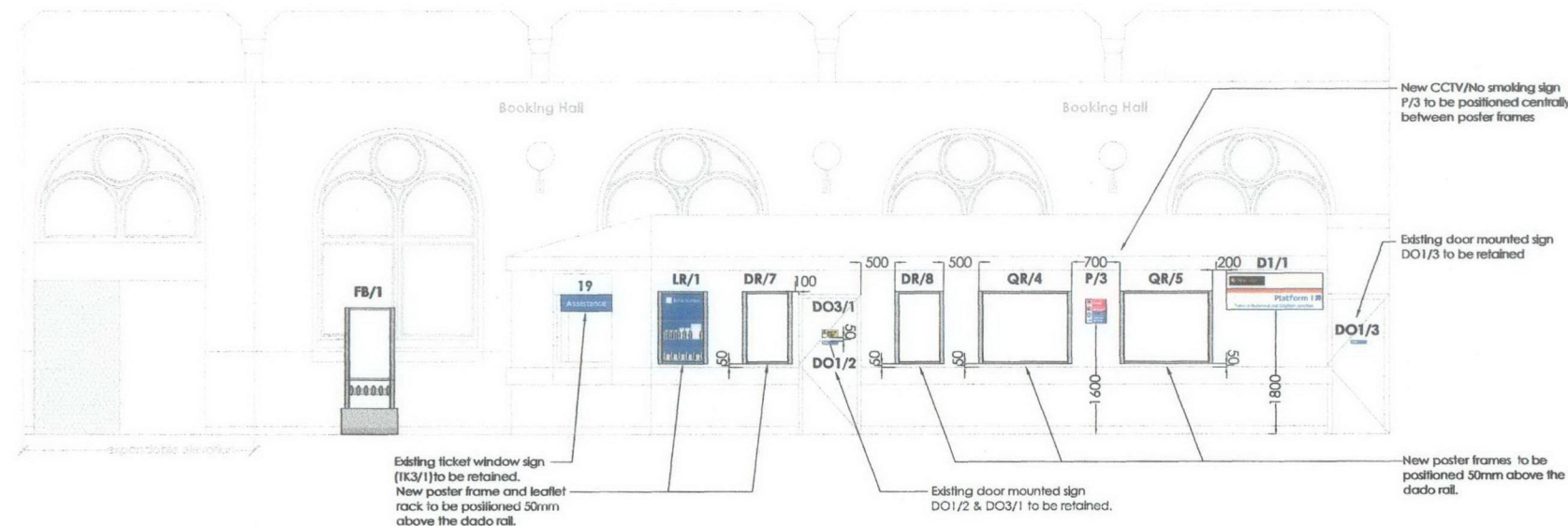
drawing no.
revision
CMD-PAD-P-93-1-03
01



Booking Hall Key Plan
N.T.S.



Section A-A



Section B-B



Section C-C

- General notes
1. This drawing is the copyright of GCP Rail Ltd and should not be reproduced without prior written approval.
 2. This drawing is to be read in conjunction with all relevant drawings, specifications and contract documents.
 3. This drawing must be read in colour.
 4. All dimensions are in millimetres (mm) and all levels are in metres (m). All dimensions and levels are to be checked on site prior to work commencing or preparation of shop or working drawings. All discrepancies are to be brought to the attention of the Engineer for a decision before proceeding with any work. Do not scale from drawings.
 5. To be read in conjunction with the following standard Notes and Drawings: civil/architectural notes refer Drawing No. STD-PAD-P-110-S-01. Standard signs refer Drawing No. STD-PAD-P-90-S-01. Signage support and foundations, STD-PAD-P-110-S-12, 13.
 6. All Materials and Workmanship shall be in accordance with current and specified standards and the Project Standard Specification.
 7. No existing safety signage is to be removed. If temporary removal of existing safety signage is required to complete any works the contractor is to submit a method statement to ensure continuation of existing safety conditions.
 8. Each sign has a unique number. TITAN and CBS Outdoor Ltd advertisement boards are outside the scope of works.
 9. The user of these documents shall be familiar with the "Designers Risk Assessment" prior to commencement of any work on site and shall take all appropriate measures necessary to minimise Health and Safety risks associated with the works.
 10. Signage to be fitted to support structures with standard TIL Mounting System. Coordination between the signage contractor and frame contractor is required.
 11. Poster frames to be Mounted to Free Standing Frame Units as per TIL drawing, FSU1000, Free Standing Frame Unit: General Arrangement.

- Legend
- Existing sign to be reused
 - Proposed new sign
 - Existing sign to be adapted

Project no.
1036 - 029

01	Revised for pre construction approval	01/01/10	MT
02	Revised to LOROL for ready approval	01/02/10	MT

GCP Rail Ltd
42 Tolard Street
London SE1 4JH
t: 020 7407 3067
f: 020 7357 9949
www.gcp.rail.co.uk

go
partnership

drawing status
PRE CONSTRUCTION APPROVAL

client
LOROL

project title
London Overground
Camden Road Station

drawing title
Proposed Station Signage
Booking Hall - Sections AA-CC
Sheet 1 of 1

scale (A1)
1:50

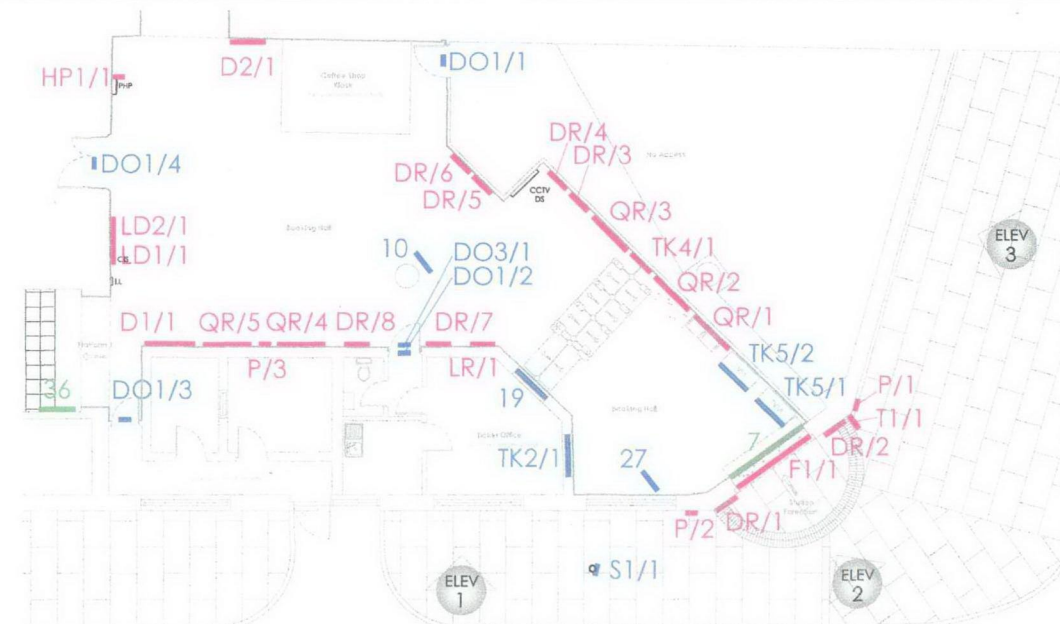
date
18.01.10

drawn
DLD

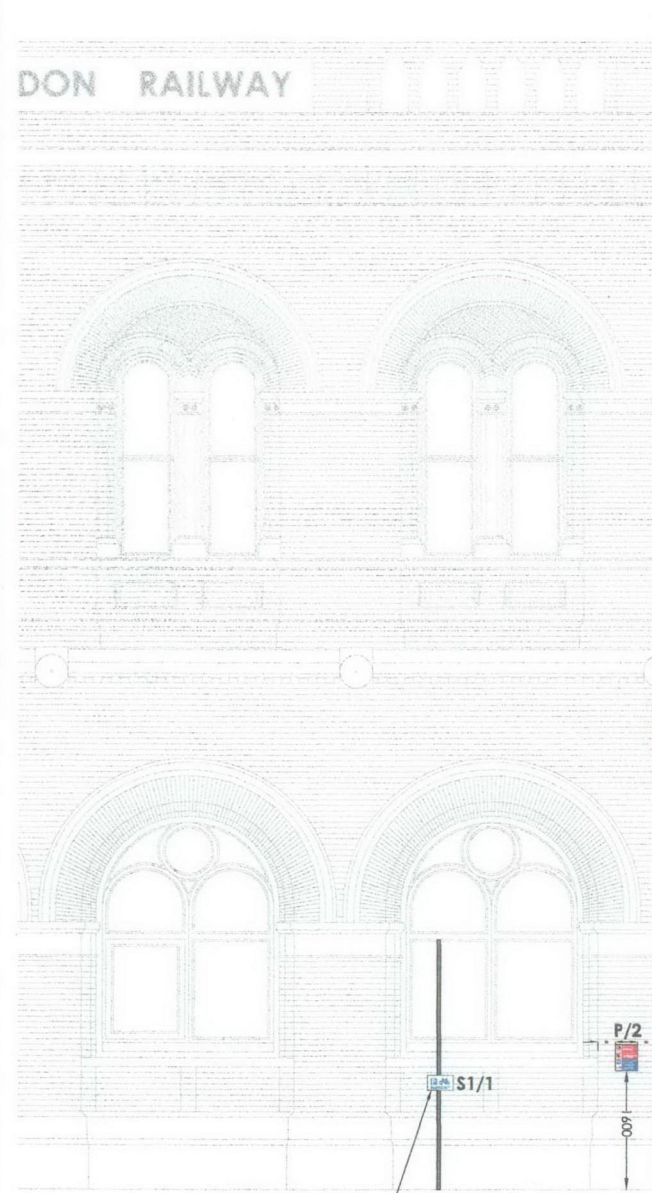
checked
MT

drawing no.
CMD-PAD-P-93-2-01

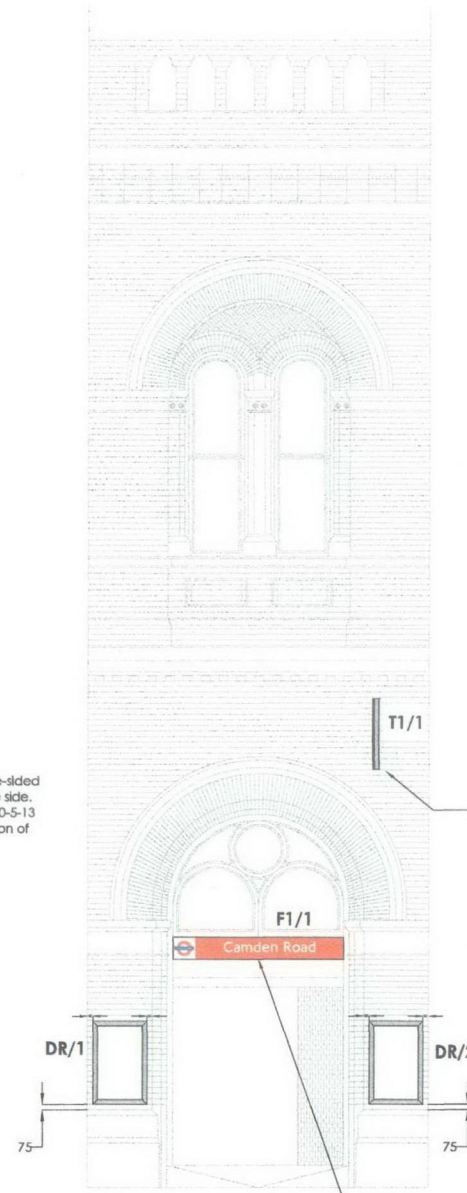
revision
01



Booking Hall Key Plan
N.T.S.



South Elevation 1



South Elevation 2



East Elevation 3

General notes

1. This drawing is the copyright of GCP Rail Ltd and should not be reproduced without prior written approval.
2. This drawing is to be read in conjunction with all relevant drawings, specifications and contract documents.
3. This drawing must be read in colour.
4. All dimensions are in millimetres (mm) and all levels are in metres (m). All dimensions and levels are to be checked on site prior to work commencing or preparation of shop or working drawings. All discrepancies are to be brought to the attention of the Engineer for a decision before proceeding with any work. Do not scale from drawings.
5. To be read in conjunction with the following standard Notes and Drawings: civil/architectural notes refer Drawing No. STD-PAD-P-110-5-01, standard signs refer Drawing No. STD-PAD-P-90-5-01, signage support and foundations, STD-PAD-P-110-5-12, 13.
6. All Materials and Workmanship shall be in accordance with current and specified standards and the Project Standard Specification.
7. No existing safety signage is to be removed. If temporary removal of existing safety signage is required to complete any works the contractor is to submit a method statement to ensure continuation of existing safety conditions.
8. Each sign has a unique number, TITAN and CBS Outdoor Ltd advertisement boards are outside the scope of works.
9. The user of these documents shall be familiar with the "Designers Risk Assessment" prior to commencement of any work on site and shall take all appropriate measures necessary to minimise Health and Safety risks associated with the works.
10. Signage to be fitted to support structures with standard TIL Mounting System. Coordination between the signage contractor and frame contractor is required.
11. Poster frames to be Mounted to Free Standing Frame Units as per TIL drawing, FSU1000, Free Standing Frame Unit: General Arrangement.

- QR/1 - Existing sign to be reused
- LD2/1 - Proposed new sign
- P/1 - Existing sign to be adapted

Project no.

1036 - 029

01	Revised for pre construction approval	01.01	22.02.10	MT
02	Revised to LOROL for early approval	01.01	01.02.10	MT

GCP Rail Ltd
42 Tabard Street
London SE1 4JF
t: 020 7407 5047
f: 020 7357 9949
www.gcp.railpartnership.co.uk

go
partnership

drawing status

PRE CONSTRUCTION APPROVAL

client

LOROL
London Overground
Camden Road Station

drawing title

Proposed Station Signage
Booking Hall - Elevations
Sheet 1 of 1

scale (A1)	date	drawn	checked
1:50	22.01.10	DLD	MT

reference

drawing no.	revision
CMD-PAD-P-93-3-01	01