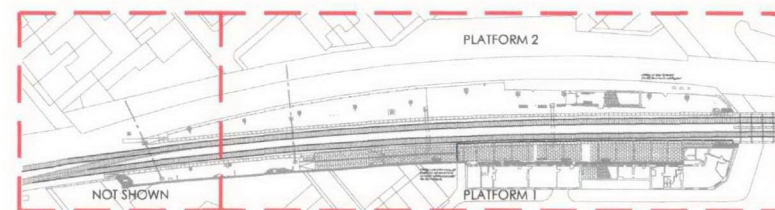


Platform Plan

Location	No.	Sign Name	Location	No.	Sign Name
Station Entrance	1	Cycle Parking	Platform 2	52	Private
	2	Poster frame: Double Royal		53	Neighborhood policing team
	3	Poster frame: Double Royal		54	Private
	4	Station fascia		55	Keep back behind the line
	5	CCTV/No smoking		56	Poster frame: Double Royal
	6	Station Tolerant		57	Private
Booking Hall	7	Station Information of other bus & rail services in vicinity		58	Poster frame: Double Royal
	8	Poster frame: Double Royal		59	Poster frame: Double Royal
	9	Free-standing leaflet rack		60	Poster frame: Double Royal
	10	Free-standing information board		61	Way out, directional
	11	Ticket Panel		62	Platform station fascia
	12	Ticket Panel		63	Platform number (1) (double-sided)
	13	Poster frame: Double Royal		64	Poster frame: Double Royal
	14	Leaflet rack		65	Keep back behind the line
	15	£50 Penalty fare		66	Prosecutions
	16	CCTV/No smoking		67	No Entry unless authorised
Under pass	17	Small white board		68	Private
	18	Assistance and tickets panel		69	Private
	19	Assistance panel		70	Revenue Protection
	20	Poster frame: Quad Royal		71	Private
	21	Poster frame: Double Royal		72	Station management team
	22	Poster frame: Quad Royal		73	Private
	23	Poster frame: Double Royal		74	Keep back behind the line
	24	Poster frame: Double Royal		75	Platform station fascia
	25	Poster frame: Double Royal		76	Private
	26	Private		77	Car stop (S) 378
Platform 1	27	Free-standing leaflet rack		78	End-of-platform warning sign
	28	Poster frame: Double Royal		79	End-of-platform warning sign
	29	Private		80	Platform number (2) (double-sided)
	30	Caution Door opens outwards		81	Yellow sign No 5
	31	Poster frame: Double Royal		82	Keep back behind the line
	32	Poster frame: Quad Royal		83	Platform station fascia
	33	Poster frame: Quad Royal		84	Keep back behind the line
	34	Platform 1 trains to Richmond and Clapham Junction		85	CCTV/No smoking
	35	Private		86	Way out, directional
	36	Platform 1 trains to Richmond and Clapham Junction		87	No smoking
Platform 2	37	Poster frame: Double Royal - Line Diagram		88	No smoking
	38	Poster frame: Quad Royal		89	Platform station fascia
	39	Private		90	Poster frame: Double Royal
	40	Poster frame: Double Royal - Line Diagram		91	Poster frame: Double Royal
	41	Platform 2 trains to Stratford, directional		92	Poster frame: Double Royal
	42	Poster frame: Double Royal		93	Poster frame: Double Royal
	43	Platform 2 trains to Stratford, directional		94	CCTV/No smoking
	44	No Access to AC Electric trains to No.2 lines		95	Way out, directional
	45	Warning limited clearance		96	Keep back behind the line
	46	Platform station fascia		97	Car stop (S) 378
Platform 1	47	End-of-platform warning sign		98	Black Car stop sign (S)
	48	Private		99	End-of-platform warning sign
	49	Caution, Chemical Hazardous material		100	No Access to AC Electric trains to No.2 lines
	50	Private		101	313 Units pan down No 2 line
	51	Fire exit keep clear		102	Warning limited clearance

Total No. Existing Poster Frames - Quad Royal: 5
Total No. Existing Poster Frames - Double Royal: 23
Total No. Existing Free-standing white board: 2
Total No. Existing Signs: 102



Key Plan
N.T.S.

- general notes
- This drawing is the copyright of GCP Rail Ltd and should not be reproduced without prior written approval.
 - This drawing is to be read in conjunction with all relevant drawings, specifications and contract documents.
 - This drawing must be read in colour.
 - All dimensions are in millimetres (mm) and all levels are in metres (m). All dimensions and levels are to be checked on site prior to work commencing or preparation of shop or working drawings. All discrepancies are to be brought to the attention of the Engineer for a decision before proceeding with any work. Do not scale from drawings.
 - To be read in conjunction with the following standard Notes and Drawings: civil/architectural notes refer Drawing No. STD-PAD-P-110-5-01. Standard signs refer Drawing No. STD-PAD-P-90-5-01. Signage support and foundations, STD-PAD-P-110-5-12, 13.
 - All Materials and Workmanship shall be in accordance with current and specified standards and the Project Standard Specification.
 - No existing safety signage is to be removed. If temporary removal of existing safety signage is required to complete any works the contractor is to submit a method statement to ensure continuation of existing safety conditions.
 - Each sign has a unique number. TITAN and CBS Outdoor Ltd advertisement boards are outside the scope of works.
 - The user of these documents shall be familiar with the "Designers Risk Assessment" prior to commencement of any work on site and shall take all appropriate measures necessary to minimise Health and Safety risks associated with the works.
 - Signage to be fitted to support structures with standard TIT Mounting System. Coordination between the signage contractor and frame contractor is required.
 - Poster frames to be Mounted to Free Standing Frame Units as per TIT drawing, FSU1000. Free Standing Frame Unit: General Arrangement.

key

52 - Existing sign
18 - Existing poster frame

project no.
1036 - 029

issued for information DLD 01.02.10 MT

GCP Rail Ltd
42 Tabard Street
London SE1 4JU
t: 020 7407 3047
f: 020 7357 9949
www.gcp.rail.co.uk

partnership

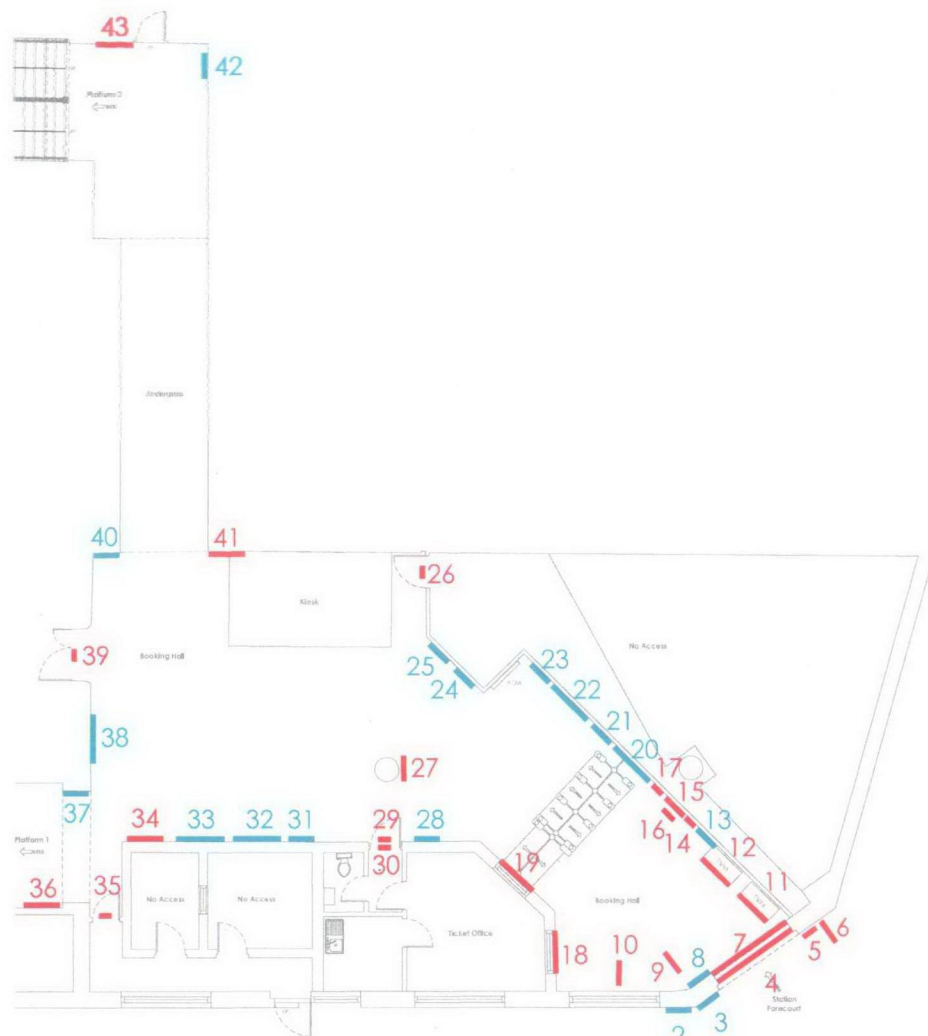
FOR INFORMATION

project
client
project title
London Overground
Camden Road Station

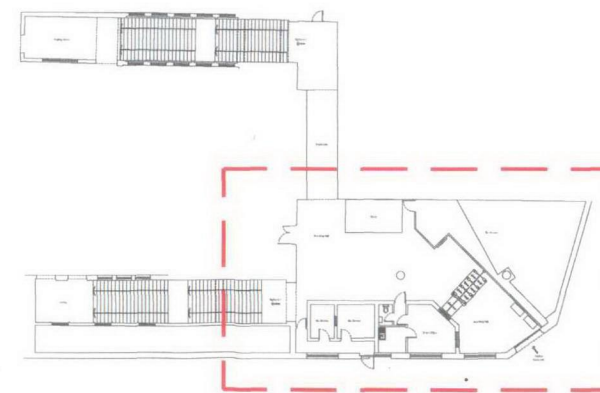
drawing
drawing title
Existing Station Signage
Platform Plans
Sheet 1 of 1

scale (A1) date drawn checked
1:200 20.09.09 DLD MT

reference
drawing no. revision
CMD-PAD-E-91-1-01 00



Existing Booking Hall Plan



Existing Booking Hall Key Plan
N.T.S.

EXISTING SIGNAGE: CAMDEN ROAD				
Location	No.	Sign Name	Location	No.
Station Entrance	1	Cycle Parking	52	Private
	2	Poster frame: Double Royal	53	Neighborhood - policing team
	3	Poster frame: Double Royal	54	Private
	4	Station fascia	55	Keep back behind the line
	5	CCTV/No smoking	56	Poster frame: Double Royal
	6	Station Totem	57	Private
Booking Hall	7	Station information of other bus & rail services in vicinity	58	Poster frame: Double Royal
	8	Poster frame: Double Royal	59	Poster frame: Double Royal
	9	Free-standing leaflet rack	60	Poster frame: Double Royal
	10	Free-standing information board	61	Way out, directional
	11	Ticket Panel	62	Platform station fascia
	12	Ticket Panel	63	Platform number (1) (double-sided)
	13	Poster frame: Double Royal	64	Poster frame: Double Royal
	14	Leaflet rack	65	Keep back behind the line
	15	£50 Penalty fare	66	Prosecutions
	16	CCTV/No smoking	67	No Entry unless authorised
Platform 1	17	Small white board	68	Private
	18	Assistance and tickets panel	69	Private
	19	Assistance panel	70	Revenue Protection
	20	Poster frame: Quad Royal	71	Private
	21	Poster frame: Double Royal	72	Station management team
	22	Poster frame: Quad Royal	73	Private
	23	Poster frame: Double Royal	74	Keep back behind the line
	24	Poster frame: Double Royal	75	Platform station fascia
	25	Poster frame: Double Royal	76	Private
	26	Private	77	Car stop (B) 378
Platform 2	27	Free-standing leaflet rack	78	End-of-platform warning sign
	28	Poster frame: Double Royal	79	End-of-platform warning sign
	29	Private	80	Platform number (2) (double-sided)
	30	Caution Door opens outwards	81	Yellow sign No 5
	31	Poster frame: Double Royal	82	Keep back behind the line
	32	Poster frame: Quad Royal	83	Platform station fascia
	33	Poster frame: Quad Royal	84	Keep back behind the line
	34	Platform 1 trains to Richmond and Clapham Junc	85	CCTV/No smoking
	35	Private	86	Way out, directional
	36	Platform 1 trains to Richmond and Clapham Junc	87	No smoking
Under pass	37	Poster frame: Double Royal - Line Diagram	88	No smoking
	38	Poster frame: Quad Royal	89	Platform station fascia
	39	Private	90	Poster frame: Double Royal
	40	Poster frame: Double Royal - Line Diagram	91	Poster frame: Double Royal
	41	Platform 2 trains to Stratford, directional	92	Poster frame: Double Royal
	42	Poster frame: Double Royal	93	Poster frame: Double Royal
	43	Platform 2 trains to Stratford, directional	94	CCTV/No smoking
	44	No Access to AC Electric trains to No.2 lines	95	Way out, directional
	45	Warning limited clearance	96	Keep back behind the line
	46	Platform station fascia	97	Car stop (B) 378
Platform 1	47	End-of-platform warning sign	98	Black Car stop sign (B)
	48	Private	99	End-of-platform warning sign
	49	Caution, Chemical Hazardous material	100	No Access to AC Electric trains to No.2 lines
	50	Private	101	313 Units pan down No 2 line
	51	Fire exit keep clear	102	Warning limited clearance
		Total No. Existing Poster Frames - Quad Royal: 5		
		Total No. Existing Poster Frames - Double Royal: 32		
		Total No. Existing Free-standing white board: 2		
		Total No. Existing Signs: 102		

- general notes
- This drawing is the copyright of GCP Rail Ltd and should not be reproduced without prior written approval.
 - This drawing is to be read in conjunction with all relevant drawings, specifications and contract documents.
 - This drawing must be read in colour.
 - All dimensions are in millimetres (mm) and all levels are in metres (m). All dimensions and levels are to be checked on site prior to work commencing or preparation of shop or working drawings. All discrepancies are to be brought to the attention of the Engineer for a decision before proceeding with any work. Do not scale from drawings.
 - To be read in conjunction with the following standard Notes and Drawings: civil/architectural notes refer Drawing No. STD-PAD-P-110-S-01. Standard signs refer Drawing No. STD-PAD-P-90-S-01. Signage support and foundations: STD-PAD-P-110-S-12, 13.
 - All Materials and Workmanship shall be in accordance with current and specified standards and the Project Standard Specification.
 - No existing safety signage is to be removed. If temporary removal of existing safety signage is required to complete any works the contractor is to submit a method statement to ensure continuation of existing safety conditions.
 - Each sign has a unique number. TITAN and CBS Outdoor Ltd advertisement boards are outside the scope of works.
 - The user of these documents shall be familiar with the "Designers Risk Assessment" prior to commencement of any work on site and shall take all appropriate measures necessary to minimise Health and Safety risks associated with the works.
 - Signage to be fitted to support structures with standard TIL Mounting System. Coordination between the signage contractor and frame contractor is required.
 - Poster frames to be Mounted to Free Standing Frame Units as per TIL drawing, FSU1000, Free Standing Frame Unit: General Arrangement.

key

52 - Existing sign

18 - Existing poster frame

gcp reference

project no.

1036 - 029

revision

NO	Issued for Information	DLD	01.02.10	MT
NP	Revision	By	Date	CRD

company

GCP Rail Ltd

42 Tabard Street
London SE1 4JH
t: 020 7407 3047
f: 020 7357 9949

www.gcp.rail.co.uk

partnership

drawing status

FOR INFORMATION

project

client

project title

London Overground
Camden Road Station

drawing

drawing title

Existing Station Signage
Booking Hall Plan
Sheet 1 of 1

scale (A1)

1:50

date

12.01.10

drawn

DLD

checked

MT

reference

drawing no.

CMD-PAD-E-93-1-01

revision

00