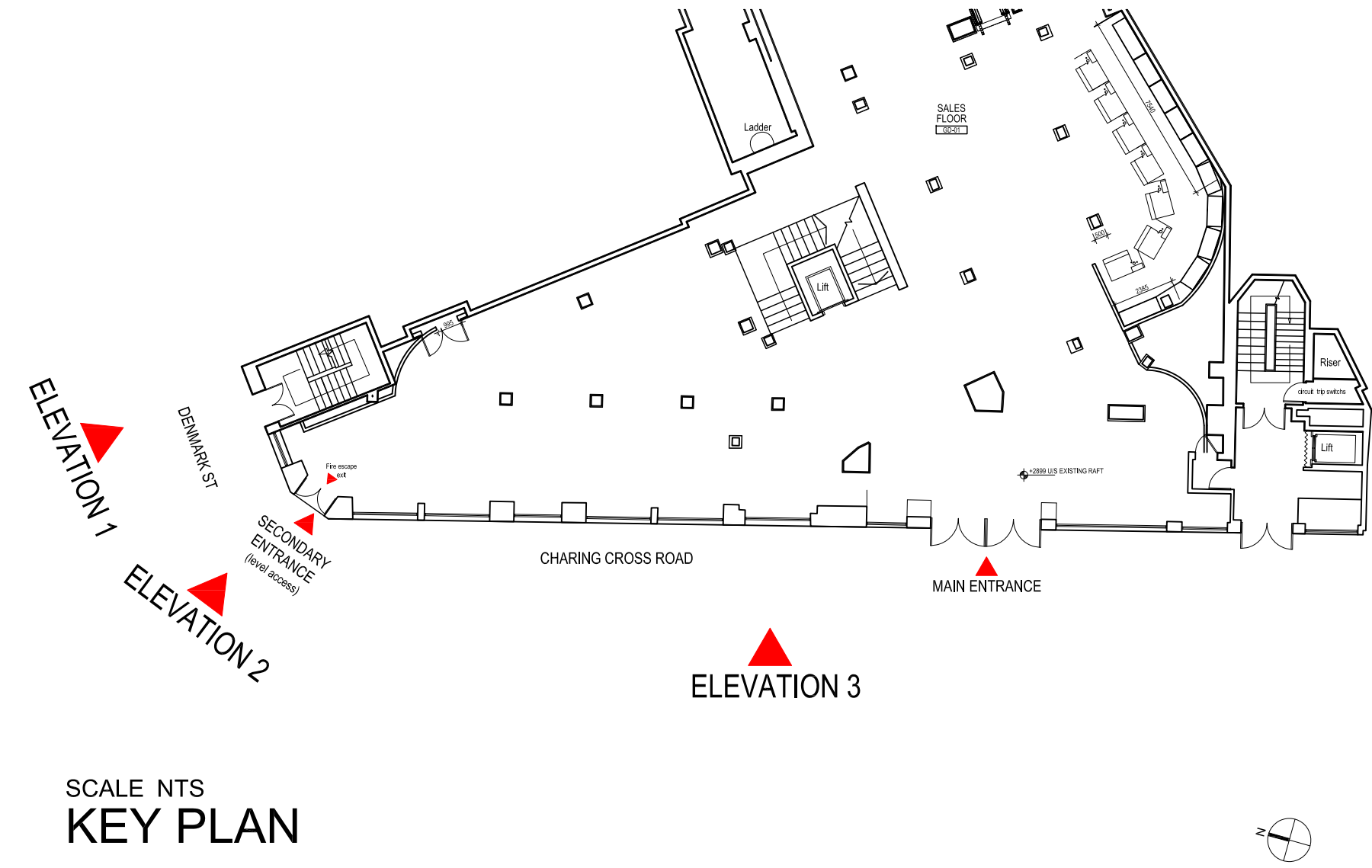
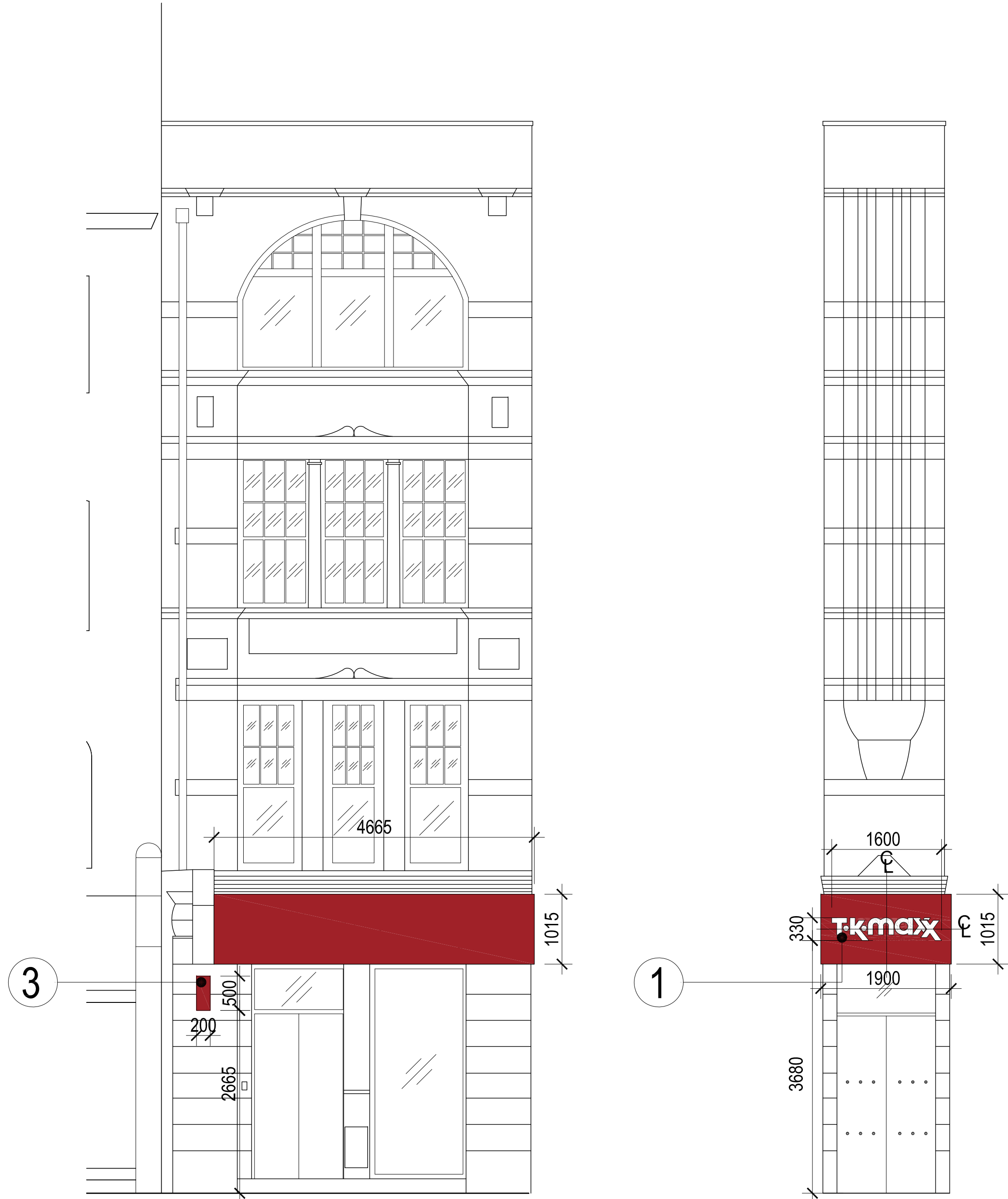


REVISIONS			
REV.	DATE	DESCRIPTION	BY
P1	19.04.2010	ISSUED FOR PLANNING PURPOSES ONLY.	IM
P2	22.04.2010	ISSUED FOR PLANNING PURPOSES ONLY.	IM
P2	28.04.2010	CONSENTION REVISED FOR PROJECTING SIGN ISSUED FOR PLANNING PURPOSES ONLY.	IM



SCALE NTS  
KEY PLAN



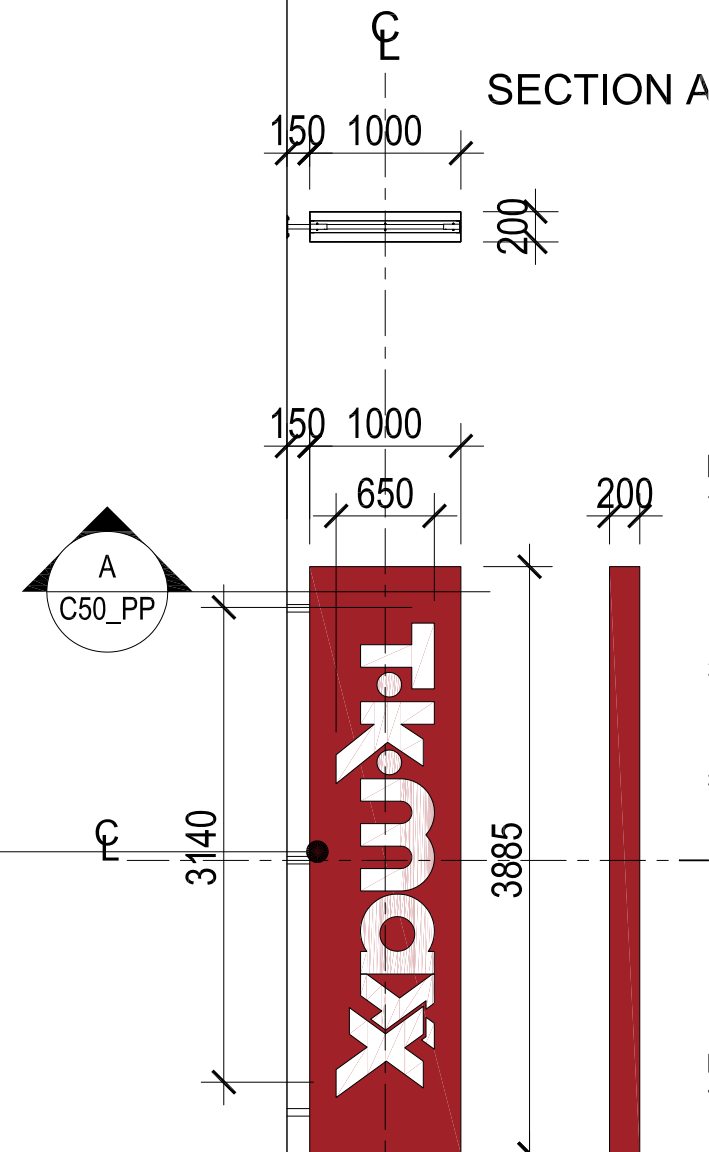
SCALE 1:50  
1 PROPOSED ELEVATION  
DENMARK STREET

SCALE 1:50  
2 PROPOSED ELEVATION  
CHARRING CROSS ROAD / DENMARK STREET



SCALE 1:50  
3 PROPOSED ELEVATION  
CHARRING CROSS ROAD

SCALE 1:50  
4 PROPOSED ELEVATION  
CHARRING CROSS ROAD



- LEGEND: (x is to read in relation with drafted numbers)
- PROPOSED TK MAXX SIGN MOUNTED WHITE ACRYLIC LETTERING WITH SS FINISH SIDE EDGES ON ALUMINIUM BUNGEE PANEL POWDER COATED TO RAL 9001. FACE AND BACKLIT TO CREATE RED HALO EFFECT AROUND LETTERS. WHITE LEDS TO FRONT FACE WITH MAX LIGHTING LEVEL OF 700 CDP. HALO IN RED LEDS WITH MAX LIGHT LEVEL OF 300CM.
  - PROPOSED TK MAXX INTERNALLY ILLUMINATED PROJECTING HONG KONG STYLE SIGN POWDER COATED ALUMINIUM (RAL 3001) WITH WHITE ACRYLIC LETTERS PUSHED THROUGH 5mm. TYPICAL ILLUMINATION 450 CDP.
  - PROPOSED TK MAXX 1000 X 500mm INTERNALLY ILLUMINATED PROJECTING BUS STOP SIGN POWDER COATED ALUMINIUM (RAL 3001) WITH WHITE ACRYLIC LETTERS PUSHED THROUGH 5mm. TYPICAL ILLUMINATION 450 CDP.

NOTE:  
1. THESE DRAWINGS ARE FOR PLANNING PURPOSES ONLY.



client  
TJX EUROPE

project  
TK MAXX:  
118-124 CHARRING CROSS RD  
LONDON, WC2H 0JR  
drawing title  
PROPOSED SHOPFRONT  
ELEVATIONS

date  
01:03:2010  
drawn by  
IM  
status

scale  
1:50 @ A0  
checked by  
CB  
PLANNING  
drawing no.  
1122-TK50-C51\_PP P2

LOM architecture and design  
Boulevard House 92 Fortis Green London N2 9EY  
T +44(0)20 8444 2999 F +44(0)20 8444 5999  
W lom-fdp.com E mail@lom-fdp.com