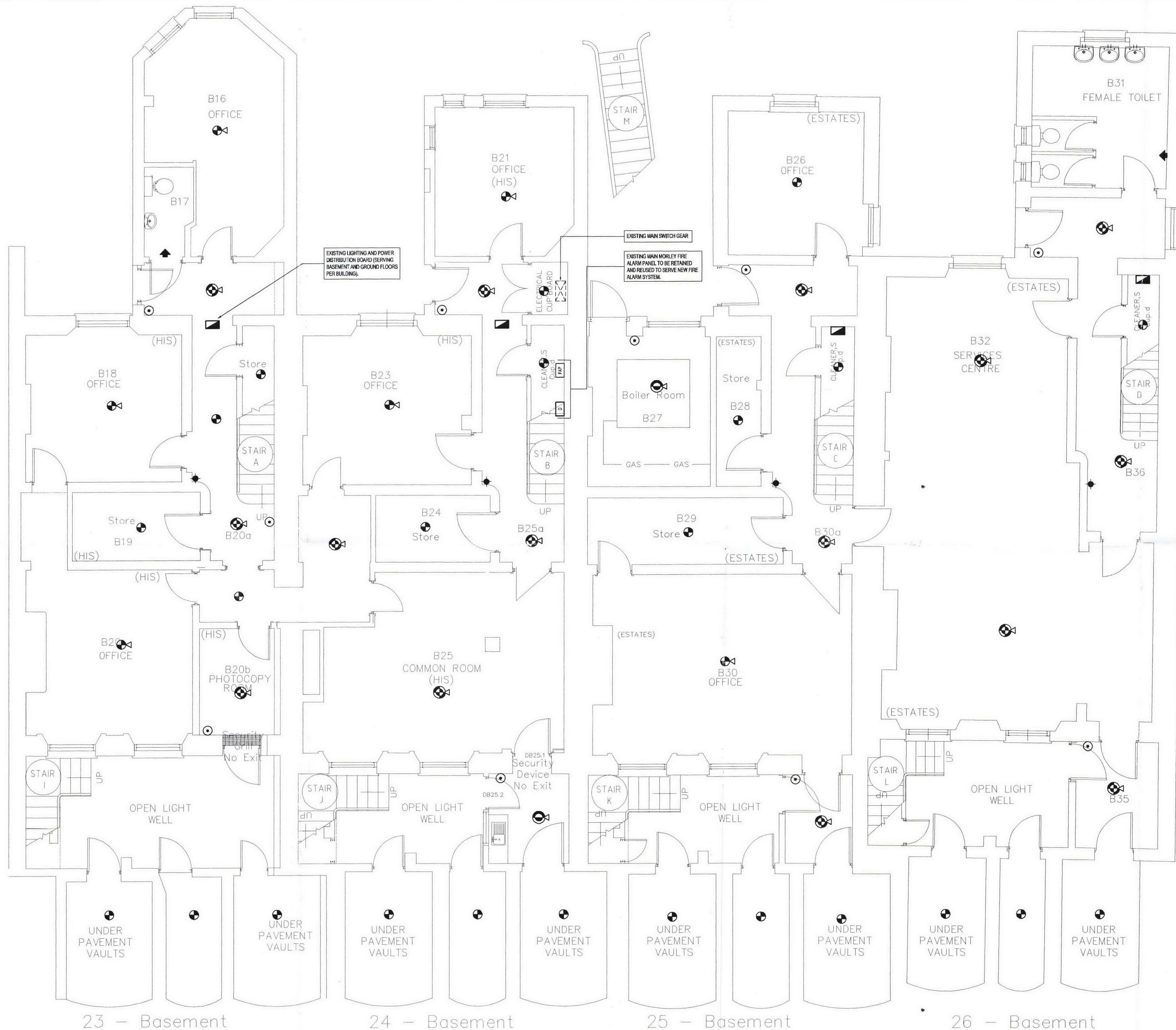


22 Gordon Square



This drawing should be read in conjunction with the specification and shall not be used in lieu of the service contractors working drawings. At construction stage, the service contractors are required to prepare co-ordinated drawings for construction purposes under the terms of the contract.

A1

LEGEND AND NOTES

- BREAK GLASS CONTACT
- HEAT DETECTOR
- SMOKE DETECTOR
- LOOP INTERFACE
- COMBINED HEAT DETECTOR / SOUNDER BASE
- COMBINED SMOKE DETECTOR / SOUNDER BASE
- COMBINED SOUNDER / FLASHING BEACON
- REMOTE LED INDICATOR
- FUSED CONNECTION UNIT
- COMBINED HEAT DETECTOR / SOUNDER / FLASHING BEACON
- COMBINED SMOKE DETECTOR / SOUNDER / FLASHING BEACON
- COMBINED SMOKE DETECTOR AND FLASHING BEACON
- TRIO PAGE UNIT
- EXISTING DISTRIBUTION BOARD
- FIRE ALARM PANEL
- REPEATER FIRE ALARM PANEL
- UCL NETWORK DATA POINT
- EXISTING MAIN SWITCH GEAR
- 75mm DIA CORE DRILLED HOLE THROUGH FLOOR SLAB (FORM AND MAKE GOOD) (SEE POSITION FOR FIRE ALARM AND EMERGENCY LIGHTING DATA CABLES TO ALL FLOORS)

REV	DATE	DESCRIPTION	ALT	DO	CHK	ORIG	APP
-----	------	-------------	-----	----	-----	------	-----

TGA Consulting Engineers LLP
Armstrong House,
Norton Road
Stevenage
Hertfordshire, SG1 2LX
T: 01438 314422
F: 01438 314433
E: stevenage@tga.co.uk

tga

Consulting Engineers LLP

Project
UNIVERSITY COLLEGE LONDON
23-26 GORDON SQUARE HOUSES

Title
ELECTRICAL ENGINEERING SERVICES
BASEMENT PLAN
REPLACEMENT FIRE ALARM LAYOUT

Architect

Client
UCL ESTATES AND FACILITIES DIVISION.

Drawing Number
6888E(67)-007

Revision	Scale
A1	1:50
A3	N.T.S.
A4	N.T.S.

Path
J:\6888\ELEC\6888E(67)-007

Architects Drawing Reference

Drawn	DO Check	Originator	Approved
AW	GK	ED	ED
Date	JAN 2010	Status	TENDER

This drawing is the copyright of TGA Consulting Engineers LLP and must not be reproduced without their permission. This drawing shall not be scaled for construction purposes.