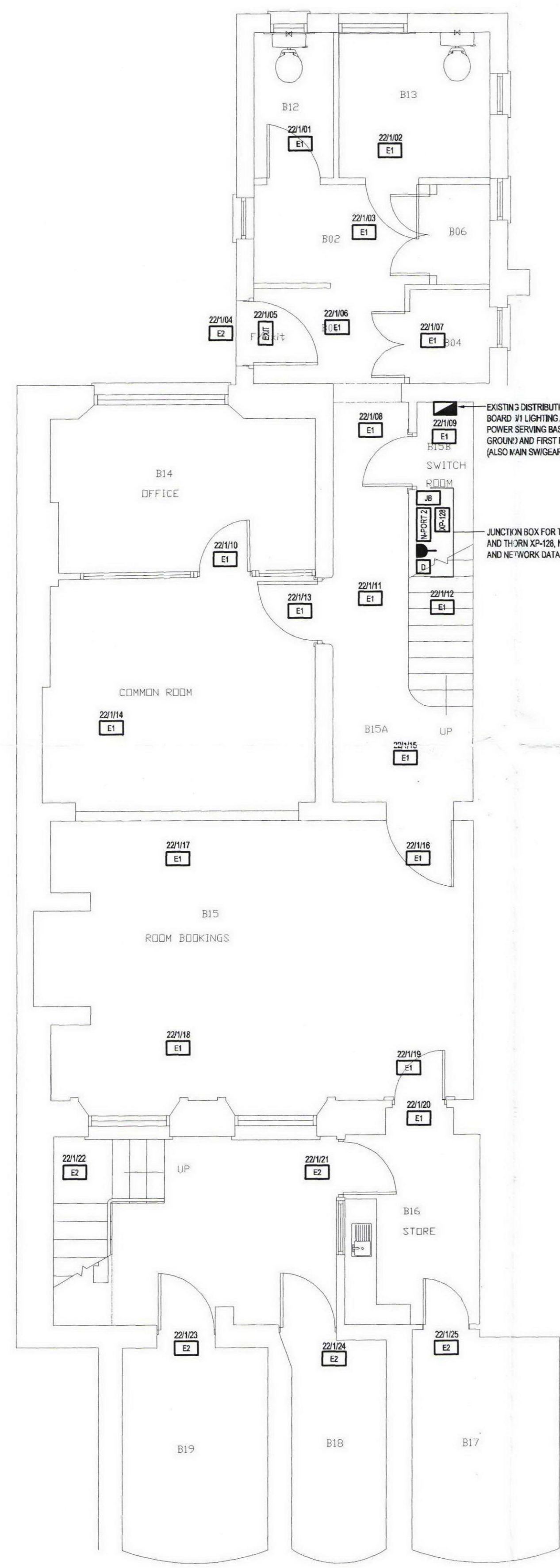


This drawing should be read in conjunction with the specification and shall not be used in lieu of the service contractors working drawings. At construction stage, the service contractors are required to prepare detailed drawings for construction purposes under the terms of the contract.

A1

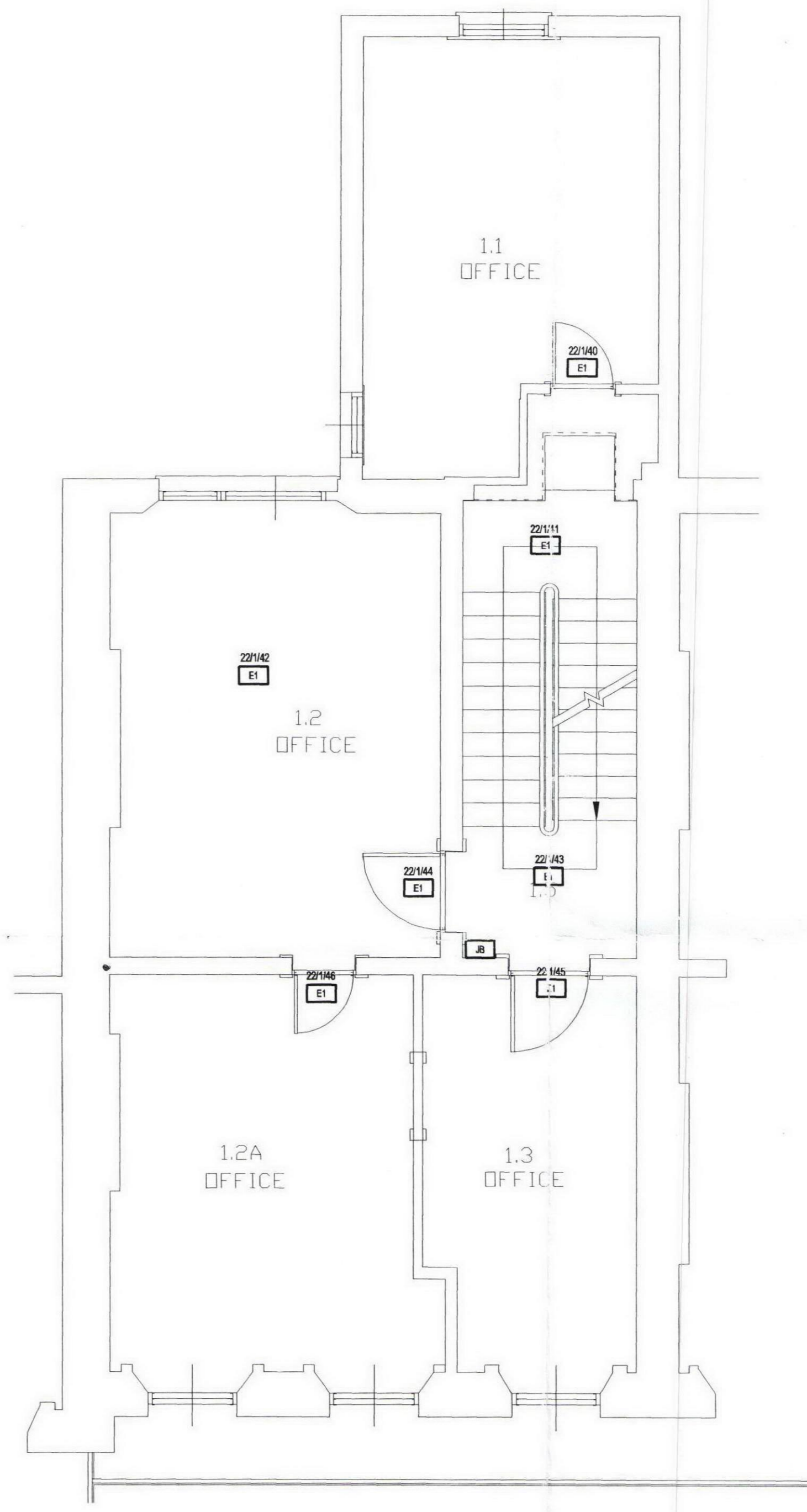
- LEGEND
- STAND ALONE EMERGENCY LUMINAIRE
 - STAND ALONE (EXTERNAL) EMERGENCY LUMINAIRE
 - ILLUMINATE EXIT SIGN
 - THORN EXPANDER PANEL
 - THORN DATA COMMS COMMUNICATIONS
 - FUSED CONNECTION UNIT
 - JUNCTION BOX FOR DATA CABLING TO EMERGENCY LUMINAIRES
 - UCL NETWORK DATA POINT
 - EXISTING DISTRIBUTION BOARD



BASEMENT



GROUND



FIRST

REV	DATE	DESCRIPTION	ALT	DO	ORIG	APP	
CHK	CHK						
<p>TGA Consulting Engineers LLP Armstrong House, Norton Road Stevenage Hertfordshire, SG1 2LX T: 01438 314422 F: 01438 314433 E: stovenage@tga.co.uk</p>							
<p>Project UNIVERSITY COLLEGE LONDON 22 GORDON SQUARE HOUSES</p>							
<p>Title ELECTRICAL ENGINEERING SERVICES BASEMENT, GROUND AND FIRST FLOOR REPLACEMENT EMERGENCY LIGHTING SYSTEM</p>							
<p>Architect -</p>							
<p>Client UCL ESTATES AND FACILITIES DIVISION.</p>							
<p>Drawing Number 6888E(63)-013</p>			<p>Revision</p>		<p>Scale</p>		
			A1		1:50		
			A3		N.T.S.		
			A4		N.T.S.		
<p>Path J:\6888\ELEC\6888E(63)-012</p>							
<p>Architects Drawing Reference -</p>							
<p>Drawn JB</p>		<p>DO Check GK</p>		<p>Originator ED</p>		<p>Approved ED</p>	
<p>Date JAN 2010</p>						<p>Status TENDER</p>	
<p>This drawing is the copyright of TGA Consulting Engineers LLP and must not be reproduced without their permission. This drawing shall not be scaled for construction purposes.</p>							

