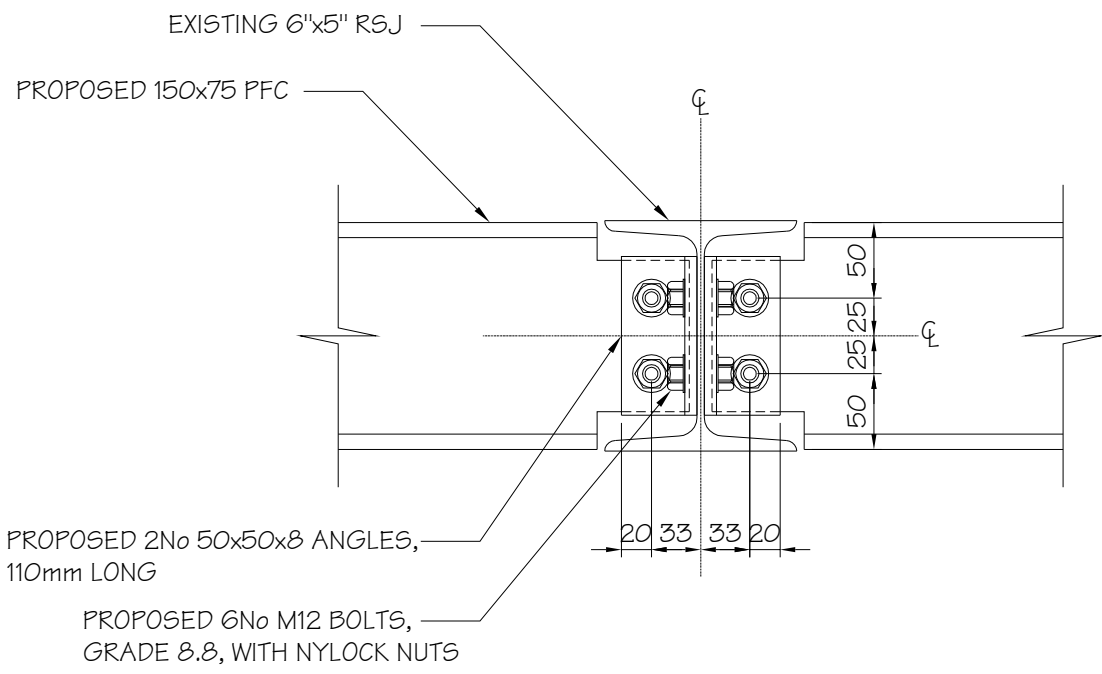
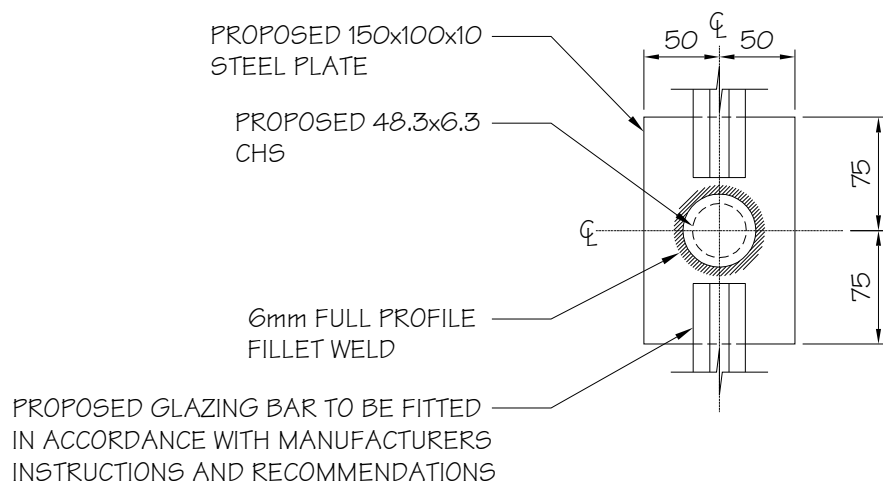


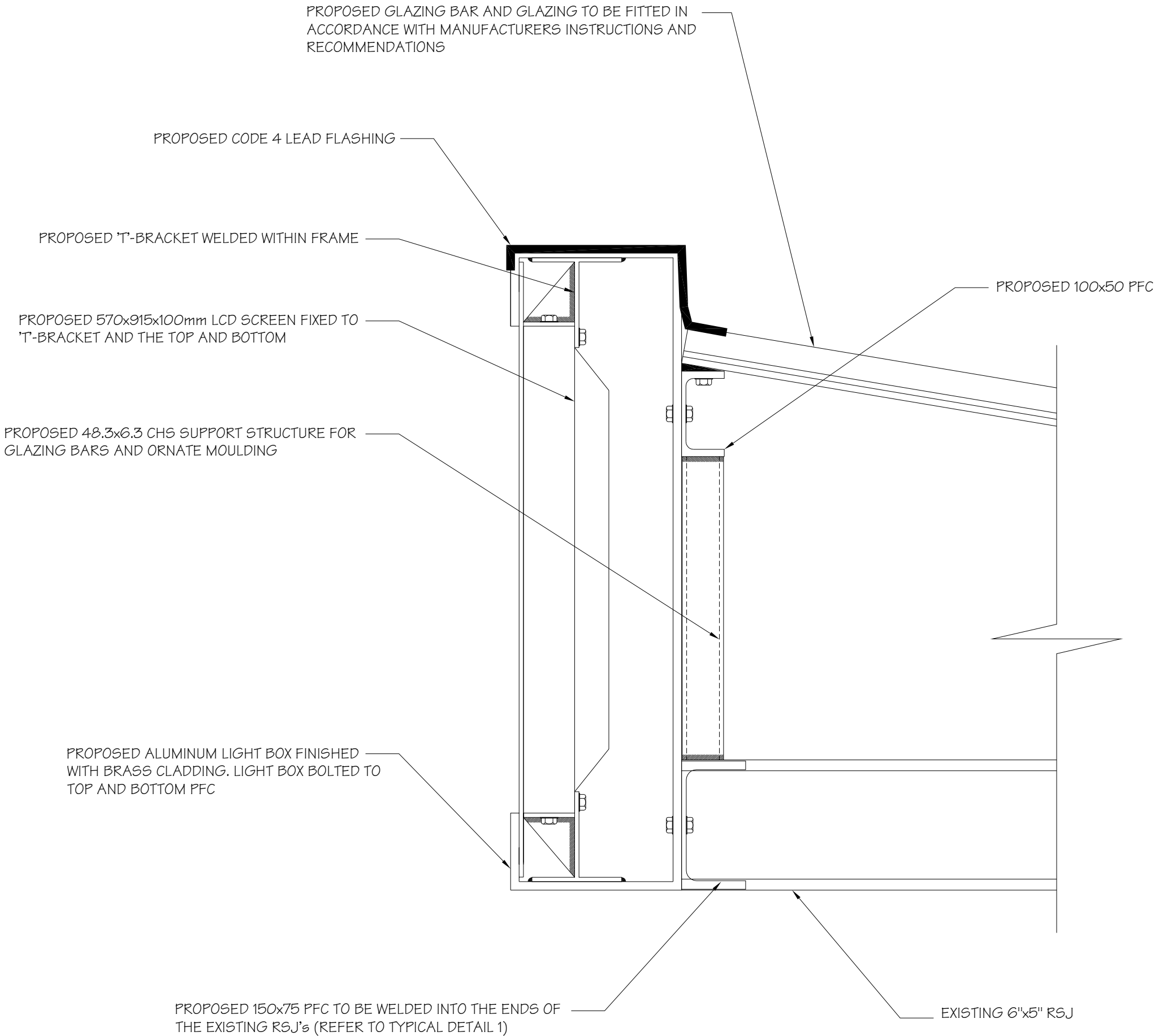
PROPOSED SECTION B-B  
THROUGH CANOPY OVER THE MAIN ENTRANCE SHOWING LIGHT BOX  
(SCALE 1:10 AT A1)



TYPICAL DETAIL 1  
PFC CONNECTION DETAIL TO EXISTING STEEL  
(SCALE 1:5 AT A1)



TYPICAL DETAIL 2  
(SCALE 1:5 AT A1)



PROPOSED ENLARGED LIGHT BOX SHOWING FIXING DETAILS  
(SCALE 1:5 AT A1)

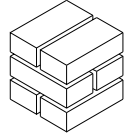
DO NOT SCALE THIS DRAWING.

Notes

FOR GENERAL NOTES REFER TO DRAWING 1636-054


PRELIMINARY FOR  
LOCAL AUTHORITY  
APPROVAL ONLY  
NOT FOR  
CONSTRUCTION

Rev.	Date	Description	By
Revisions			

**Michael Jackson Consulting**  
Chartered Structural Engineers

204 BOLTON ROAD  
WALKDEN, WORSLEY  
MANCHESTER, M28 3BN  
Tel: 0161 790 4404  
Fax: 0161 790 4405

Client

**Shaftesbury Theatre**

Project

SHAFTESBURY THEATRE  
ELEVATION REFURBISHMENT

Drawing Title

PROPOSED SECTION B-B  
THROUGH CANOPY OVER  
ENTRANCE

Scale	Date	Drawn	Checked	Passed
A5 SHOWN	25/01/10	DS		

DRG. No.

1636-055