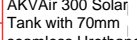
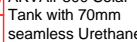
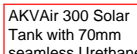


Adelaide Community Garden

1 to 6

Hutchinson House

76



File ref:	900 - BA - Plans 7.pln
-----------	------------------------

NOTES.

Please note that all dimensions must be checked on site and not scaled off this drawing.

Planning Consent:
Until planning consent has been granted and all conditions contained in that consent complied with, no building works whatsoever should be carried out on the site. Any building works thereafter are entirely at Client's own risk.

Building Regulations (Notice of Passing of Plans) Until unconditional approval of plans has been issued by Building control (The Council's District Surveyors Service), all works undertaken beforehand are entirely at Client's own risk. District Surveyors frequently require amendments to submitted plans, and any such changes or changes arising from different presumed site conditions, can radically affect building procedures.

Therefore we do not recommend that any works at all are started before obtaining both planning & unconditional Notice of Passing of Plans.

Preliminary

Planning

Building Regs.

Tender

Construction

As-built

Rev.	Date	Revision
A	Feb 10	Design amendment to LGF Storage areas.
B	Mar 10	Design amendments proposed layouts.
C	May 10	Design amendments.

[illegible]

Scholars' House, Shotton Brook Office Park,
Timothy's Bridge Road, Stratford-upon-Avon,
Warwickshire, CV37 9NR

Tel : 01789 294 560
Fax : 01789 294 549
donald@ds-architects.demon.co.uk

Reference No.	887-BA-015
---------------	------------

© Copyright

Client	Arlington Investment Company Ltd
--------	----------------------------------

Project	78 Adelaide Road
---------	------------------

Drawing Title

Proposed LGF Plan

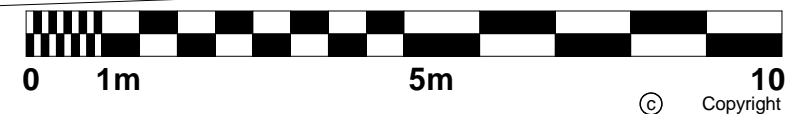
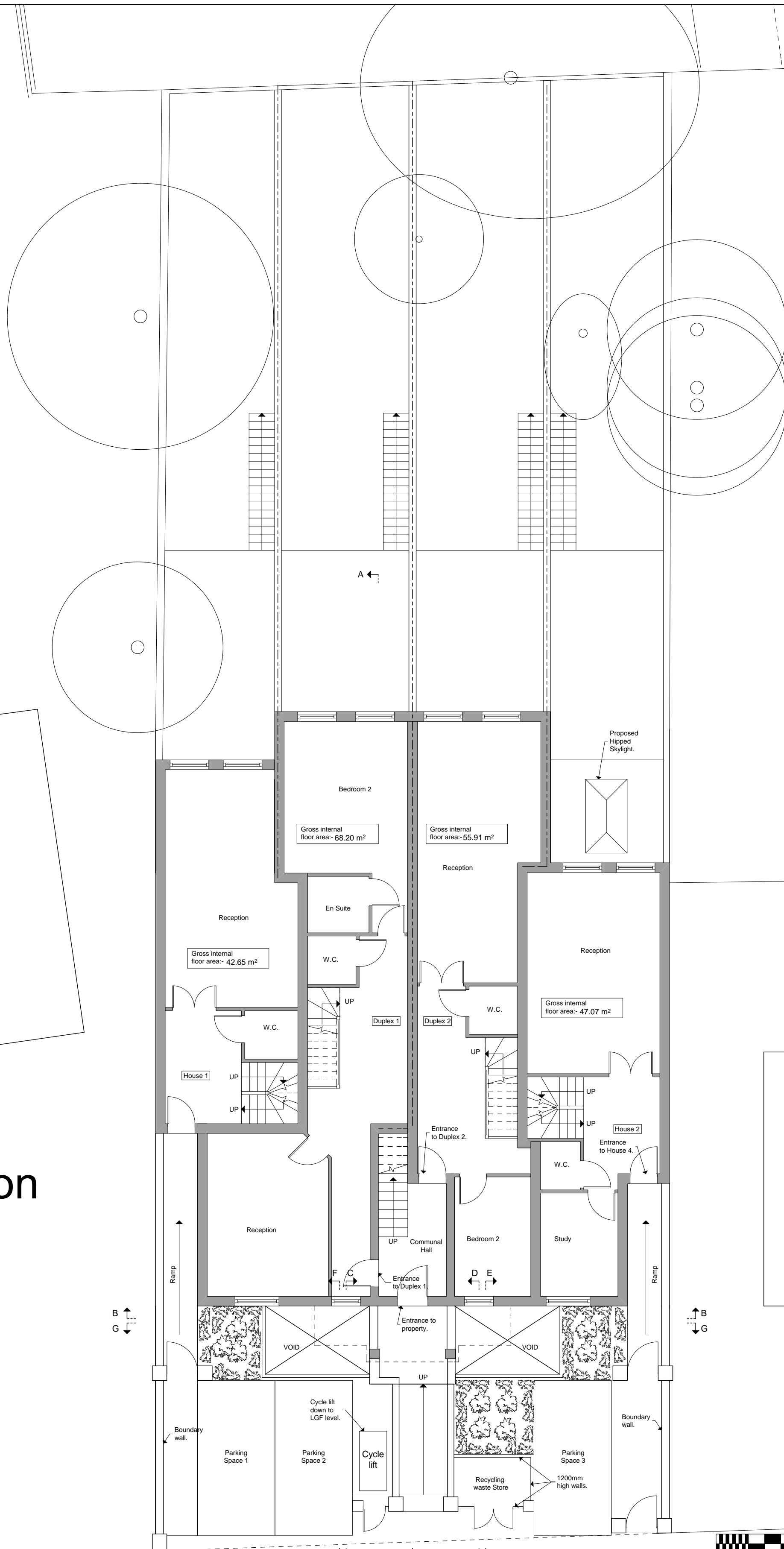
Scale	1:100	Drawing size	A2	Date	Jan 10
-------	-------	--------------	----	------	--------

Adelaide Community Garden

1 to 6

Hutchinson House

76



File ref:	900 - BA - Plans 7.pln
-----------	------------------------

NOTES.

Please note that all dimensions must be checked on site and not scaled off this drawing.

Planning Consent:
Until planning consent has been granted and all conditions contained in that consent complied with, no building works whatsoever should be undertaken. Any building works started beforehand are entirely at

Building Regulations (Notice of Passing of Plans) Until unconditional approval of plans has been issued by Building control (The Council's District Surveyors Service), all works undertaken beforehand are entirely at Client's own risk. District Surveyors frequently require amendments to submitted plans, and any such changes or changes arising from different presumed site conditions, can radically affect building procedures.

Therefore we do not recommend that any works at all are started before obtaining both planning & unconditional Notice of Passing of Plans.

Preliminary	
Planning	
Building Regs.	
Tender	
Construction	
As-built	

[illegible]

Scholars' House, Shottery Brook Office Park,
Timothy's Bridge Road, Stratford-upon-Avon,
Warwickshire, CV37 9NR

Tel : 01789 294 560
Fax : 01789 294 549
donald@ds-architects.demon.co.uk

Reference No.	887-BA-016
---------------	------------

© Copyright

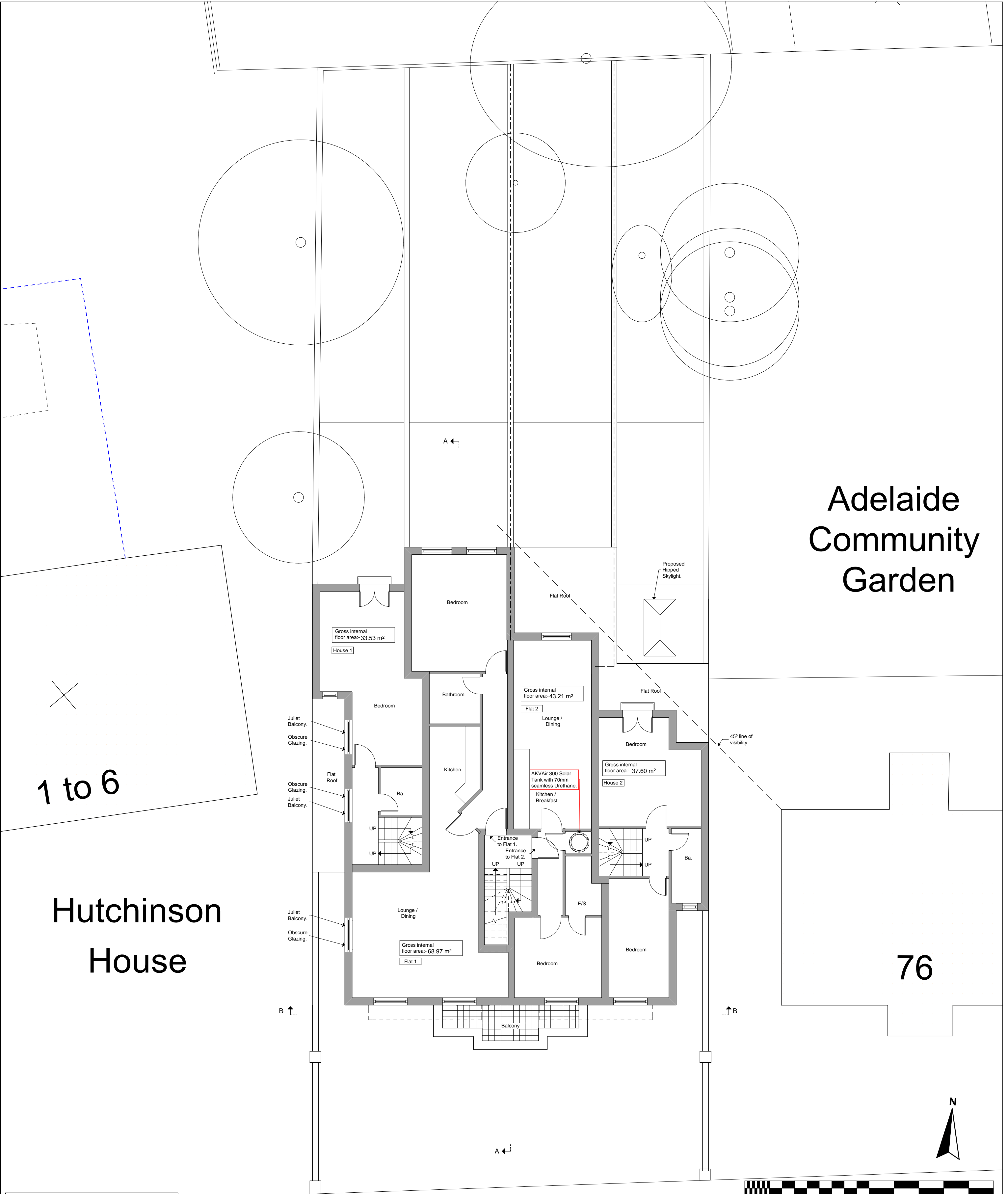
Client **Arlington Investment Company Ltd**

Project	78 Adelaide Road
---------	------------------

Drawing Title

Proposed UGF Plan

Scale	1:100	Drawing size	A2	Date	Jan 10
-------	-------	--------------	----	------	--------



File ref: 900 - BA - Plans 7.pln

NOTES.

Please note that all dimensions must be checked on site and not scaled off this drawing.

Planning Consent:
Until planning consent has been granted and all conditions contained in that consent complied with, no building works whatsoever should be undertaken. Any building works started beforehand are entirely at Client's own risk.

Building Regulations (Notice of Passing of Plans) Until unconditional approval of plans has been issued by Building control (The Council's District Surveyors Service), all works undertaken beforehand are entirely at Client's own risk. District Surveyors frequently require amendments to submitted plans, and any such changes or changes arising from different presumed site conditions, can radically affect building procedures.

Therefore we do not recommend that any works at all are started before obtaining both planning & unconditional Notice of Passing of Plans.

Preliminary	
Planning	
Building Regs.	
Tender	
Construction	
As-built	

Rev.	Date	Revision
A	Feb 10	Design amendment to Proposed Site.
B	Mar 10	Design amendments proposed layouts.
C	May 10	Design amendments.

© Copyright

ARCHITECTS
DONALD SHEARER
CHARTERED ARCHITECTS

Scholars' House, Shottery Brook Office Park,
Timothy's Bridge Road, Stratford-upon-Avon,
Warwickshire, CV37 9NR

Tel : 01789 294 580
Fax : 01789 294 549
donald@ds-architects.demon.co.uk

Reference No. 887-BA-017

Rev. C

Client Arlington Investment Company Ltd

Project 78 Adelaide Road

Drawing Title Proposed Mezz. Plan

Scale 1:100	Drawing size A2	Date Jan 10
-------------	-----------------	-------------

Adelaide Community Garden

1 to 6

Hutchinson House

76

[illegible]

Adelaide Community Garden

1 to 6

Hutchinson House

76

File ref: 900 - BA - Plans 7.pln		<div><div><div></div><div></div><div></div><div></div><div></div><div></div><div></div><div></div><div></div><div></div><div></div><div></div><div></div><div></div><div></div><div></div><div></div><div></div><div></div><div></div><div></div><div></div><div></div><div></div><div></div><div></div><div></div><div></div><div></div><div></div><div></div><div></div><div></div><div></div><div></div><div></div><div></div><div></div><div></div><div></div><div></div><div></div><div></div><div></div><div></div><div></div><div></div><div></div><div></div><div></div><div></div><div></div><div></div><div></div><div></div><div></div><div></div><div></div><div></div><div></div><div></div><div></div><div></div><div></div><div></div><div></div><div></div><div></div><div></div><div></div><div></div><div></div><div></div><div></div><div></div><div></div><div></div><div></div><div></div><div></div><div></div><div></div><div></div><div></div><div></div><div></div><div></div><div></div><div></div><div></div><div></div><div></div><div></div><div></div><div></div><div></div><div></div><div></div><div></div><div></div><div></div><div></div><div></div><div></div><div></div><div></div><div></div><div></div><div></div><div></div><div></div><div></div><div></div><div></div><div></div><div></div><div></div><div></div><div></div><div></div><div></div><div></div><div></div><div></div><div></div><div></div><div></div><div></div><div></div><div></div><div></div><div></div><div></div><div></div><div></div><div></div><div></div><div></div><div></div><div></div><div></div><div></div><div></div><div></div><div></div><div></div><div></div><div></div><div></div><div></div><div></div><div></div><div></div><div></div><div></div><div></div><div></div><div></div><div></div><div></div><div></div><div></div><div></div><div></div><div></div><div></div><div></div><div></div><div></div><div></div><div></div><div></div><div></div><div></div><div></div><div></div><div></div><div></div><div></div><div></div><div></div><div></div><div></div><div></div><div></div><div></div><div></div><div></div><div></div><div></div><div></div><div></div><div></div><div></div><div></div><div></div><div></div><div></div><div></div><div></div><div></div><div></div><div></div><div></div><div></div><div></div><div></div><div></div><div></div><div></div><div></div><div></div><div></div><div></div><div></div><div></div><div></div><div></div><div></div><div></div><div></div><div></div><div></div><div></div><div></div><div></div><div></div><div></div><div></div><div></div><div></div><div></div><div></div><div></div><div></div><div></div><div></div><div></div><div></div><div></div><div></div><div></div><div></div><div></div><div></div><div></div><div></div><div></div><div></div><div></div><div></div><div></div><div></div><div></div><div></div><div></div><div></div><div></div><div></div><div></div><div></div><div></div><div></div><div></div><div></div><div></div><div></div><div></div><div></div><div></div><div></div><div></div><div></div><div></div><div></div><div></div><div></div><div></div><div></div><div></div><div></div><div></div><div></div><div></div><div></div><div></div><div></div><div></div><div></div><div></div><div></div><div></div><div></div><div></div><div></div><div></div><div></div><div></div><div></div><div></div><div></div><div></div><div></div><div></div><div></div><div></div><div></div><div></div><div></div><div></div><div></div><div></div><div></div><div></div><div></div><div></div><div></div><div></div><div></div><div></div><div></div><div></div><div></div><div></div><div></div><div></div><div></div><div></div><div></div><div></div><div></div><div></div><div></div><div></div><div></div><div></div><div></div><div></div><div></div><div></div><div></div><div></div><div></div><div></div><div></div><div></div><div></div><div></div><div></div><div></div><div></div><div></div><div></div><div></div><div></div><div></div><div></div><div></div><div></div><div></div><div></div><div></div><div></div><div></div><div></div><div></div><div></div><div></div><div></div><div></div><div></div><div></div><div></div><div></div><div></div><div></div><div></div><div></div><div></div><div></div><div></div><div></div><div></div><div></div><div></div><div></div><div></div><div></div><div></div><div></div><div></div><div></div><div></div><div></div><div></div><div></div><div></div><div></div><div></div><div></div><div></div><div></div><div></div><div></div><div></div><div></div><div></div><div></div><div></div><div></div><div></div><div></div><div></div><div></div><div></div><div></div><div></div><div></div><div></div><div></div><div></div><div></div><div></div><div></div><div></div><div></div><div></div><div></div><div></div><div></div><div></div><div></div><div></div><div></div><div></div><div></div><div></div><div></div><div></div><div></div><div></div><div></div><div></div><div></div><div></div><div></div><div></div><div></div><div></div><div></div><div></div><div></div><div></div><div></div><div></div><div></div><div></div><div></div><div></div><div></div><div></div><div></div><div></div><div></div><div></div><div></div><div></div><div></div><div></div><div></div><div></div><div></div><div></div><div></div><div></div><div></div><div></div><div></div><div></div><div></div><div></div><div></div><div></div><div></div><div></div><div></div><div></div><div></div><div></div><div></div><div></div><div></div><div></div><div></div><div></div><div></div><div></div><div></div><div></div><div></div><div></div><div></div><div></div><div></div><div></div><div></div><div></div><div></div><div></div><div></div><div></div><div></div><div></div><div></div><div></div><div></div><div></div><div></div><div></div><div></div><div></div><div></div><div></div><div></div><div></div><div></div><div></div><div></div><div></div><div></div><div></div><div></div><div></div><div></div><div></div><div></div><div></div><div></div><div></div><div></div><div></div><div></div><div></div><div></div><div></div><div></div><div></div><div></div><div></div><div></div><div></div><div></div><div></div><div></div><div></div><div></div><div></div><div></div><div></div><div></div><div></div><div></div><div></div><div></div><div></div><div></div><div></div><div></div><div></div><div></div><div></div><div></div><div></div><div></div><div></div><div></div><div></div><div></div><div></div><div></div><div></div><div></div><div></div><div></div><div></div><div></div><div></div><div></div><div></div><div></div><div></div><div></div><div></div><div></div><div></div><div></div><div></div><div></div><div></div><div></div><div></div><div></div><div></div><div></div><div></div><div></div><div></div><div></div><div></div><div></div><div></div><div></div><div></div><div></div><div></div><div></div><div></div><div></div><div></div><div></div><div></div><div></div><div></div><div></div><div></div><div></div><div></div><div></div><div></div><div></div><div></div><div></div><div></div><div></div><div></div><div></div><div></div><div></div><div></div><div></div><div></div><div></div><div></div><div></div><div></div><div></div><div></div><div></div><div></div><div></div><div></div><div></div><div></div><div></div><div></div><div></div><div></div><div></div><div></div><div></div><div></div><div></div><div></div><div></div><div></div><div></div><div></div><div></div><div></div><div></div><div></div><div></div><div></div><div></div><div></div><div></div><div></div><div></div><div></div><div></div><div></div><div></div><div></div><div></div><div></div><div></div><div></div><div></div><div></div><div></div><div></div><div></div><div></div><div></div><div></div><div></div><div></div><div></div><div></div><div></div><div></div><div></div><div></div><div></div><div></div><div></div><div></div><div></div><div></div><div></div><div></div><div></div><div></div><div></div><div></div><div></div><div></div><div></div><div></div><div></div><div></div><div></div><div></div><div></div><div></div><div></div><div></div><div></div><div></div><div></div><div></div><div></div><div></div><div></div><div></div><div></div><div></div><div></div><div></div><div></div><div></div><div></div><div></div><div></div><div></div><div></div><div></div><div></div><div></div><div></div><div></div><div></div><div></div><div></div><div></div><div></div><div></div><div></div><div></div><div></div><div></div><div></div><div></div><div></div><div></div><div></div><div></div><div></div><div></div><div></div><div></div><div></div><div></div><div></div><div></div><div></div><div></div><div></div><div></div><div></div><div></div><div></div><div></div><div></div><div></div><div></div><div></div><div></div><div></div><div></div><div></div><div></div><div></div><div></div><div></div><div></div><div></div><div></div><div></div><div></div><div></div><div></div><div></div><div></div><div></div><div></div><div></div><div></div><div></div><div></div><div></div><div></div><div></div><div></div><div></div><div></div><div></div><div></div><div></div><div></div><div></div><div></div><div></div><div></div><div></div><div></div><div></div><div></div><div></div><div></div><div></div><div></div><div></div><div></div><div></div><div></div><div></div><div></div><div></div><div></div><div></div><div></div><div></div><div></div><div></div><div></div><div></div><div></div><div></div><div></div><div></div><div></div><div></div><div></div><div></div><div></div><div></div><div></div><div></div><div></div><div></div><div></div><div></div><div></div><div></div><div></div><div></div><div></div><div></div><div></div><div></div><div></div><div></div><div></div><div></div><div></div><div></div><div></div><div></div><div></div><div></div><div></div><div></div><div></div><div></div><div></div><div></div><div></div><div></div><div></div><div></div><div></div><div></div><div></div><div></div><div></div><div></div><div></div><div></div><div></div><div></div><div></div><div></div><div></div><div></div><div></div><div></div><div></div><div></div><div></div><div></div><div></div><div></div><div></div><div></div><div></div><div></div><div></div><div></div><div></div><div></div><div></div><div></div><div></div><div></div><div></div><div></div><div></div><div></div><div></div><div></div><div></div><div></div><div></div><div></div><div></div><div></div><div></div><div></div><div></div><div></div><div></div><div></div><div></div><div></div><div></div><div></div><div></div><div></div><div></div><div></div><div></div><div></div><div></div><div></div><div></div><div></div><div></div><div></div><div></div><div></div><div></div><div></div><div></div><div></div><div></div><div></div><div></div><div></div><div></div><div></div><div></div><div></div><div></div><div></div><div></div><div></div><div></div><div></div><div></div><div></div><div></div><div></div><div></div><div></div><div></div><div></div><div></div><div></div><div></div><div></div><div></div><div></div><div></div><div></div><div></div><div></div><div></div><div></div><div></div><div></div><div></div><div></div><div></div><div></div><div></div><div></div><div></div><div></div><div></div><div></div><div></div><div></div><div></div><div></div><div></div><div></div><div></div><div></div><div></div><div></div><div></div><div></div><div></div><div></div><div></div><div></div><div></div><div></div><div></div><div></div><div></div><div></div><div></div><div></div><div></div><div></div><div></div><div></div><div></div><div></div><div></div><div></div><div></div><div></div><div></div><div></div><div></div><div></div><div></div><div></div><div></div><div></div><div></div><div></div><div></div><div></div><div></div><div></div><div></div><div></div><div></div><div></div><div></div><div></div><div></div><div></div><div></div><div></div><div></div><div></div><div></div><div></div><div></div><div></div><div></div><div></div><div></div><div></div><div></div><div></div><div></div><div></div><div></div><div></div><div></div><div></div><div></div><div></div><div></div><div></div><div></div><div></div><div></div><div></div><div></div><div></div><div></div><div></div><div></div><div></div><div></div><div></div><div></div><div></div><div></div><div></div><div></div><div></div><div></div><div></div><div></div><div></div><div></div><div></div><div></div><div></div><div></div><div></div><div></div><div></div><div></div><div></div><div></div><div></div><div></div><div></div><div></div><div></div><div></div><div></div></div></div>									
----------------------------------	--	---	--	--	--	--	--	--	--	--	--

Adelaide Community Garden

1 to 6

Hutchinson House

76



File ref: 900 - BA - Plans 7.pln						0 1m 5m		© Copyright 10	
NOTES. Please note that all dimensions must be checked on site and not scaled off this drawing. Planning Consent: Until planning consent has been granted and all conditions contained in that consent complied with, no building works whatsoever should be undertaken. Any building works started beforehand are entirely at Client's own risk. Building Regulations (Notice of Passing of Plans) Until unconditional approval of plans has been issued by Building control (The Council's District Surveyors Service), all works undertaken beforehand are entirely at Client's own risk. District Surveyors frequently require amendments to submitted plans, and any such changes or changes arising from different presumed site conditions, can radically affect building procedures. Therefore we do not recommend that any works at all are started before obtaining both planning & unconditional Notice of Passing of Plans.		Preliminary				Rev. Date Revision		© Copyright Client Arlington Investment Company Ltd	
		Planning				A Feb 10 Design amendment to Proposed Site.		Project	
		Building Regs.				B Mar 10 Design amendments proposed layouts.		78 Adelaide Road	
		Tender				C May 10 Design amendments.		Drawing Title	
		Construction						Proposed Roof Plan	
As-built						Scholars' House, Shotton Brook Office Park, Timothly's Bridge Road, Stratford-upon-Avon, Warwickshire, CV37 9NR		Scale 1:100 Drawing size A2 Date Jan 10	
						Reference No. 887-BA-020		Rev. C	
						© Copyright			
						DONALD SHEARER CHARTERED ARCHITECTS			
						Fax : 01789 294 560 Fax : 01789 294 549 donald@ds-architects.demon.co.uk			



NOTES.
Please note that all dimensions must be checked on site and not scaled off this drawing.
Planning Consent:
Until planning consent has been granted and all conditions contained in that consent complied with, no building works whatsoever should be undertaken. Any building works started beforehand are entirely at Client's own risk.
Building Regulations (Notice of Passing of Plans) Until unconditional approval of plans has been issued by Building control (The Council's District Surveyors Service), all works undertaken beforehand are entirely at Client's own risk. District Surveyors frequently require amendments to submitted plans, and any such changes or changes arising from different presumed site conditions, can radically affect building procedures.
Therefore we do not recommend that any works at all are started before obtaining both planning & unconditional; Notice of Passing of Plans.

Preliminary	
Planning	
Building Regs.	
Tender	
Construction	
As-built	

Rev	Date	
A	Feb 10	Design amendment to Proposed Site.
B	Mar 10	Design amendments.
C	May 10	Design amendments.

File Ref: 900 - BA - Plans 7.pln

© Copyright

ARCHITECTS

DONALD SHEARER

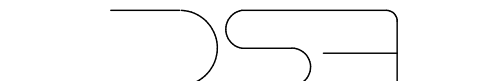
CHARTERED ARCHITECTS

Scholar's House, Shotton Brook Office Park,
Timothy's Bridge Road, Stratford-upon-Avon,
Warwickshire, CV37 9NR

Tel: 01789 294 560
Fax: 01789 294 549
donald@ds-architects.demon.co.uk

Project	78 Adelaide Road	Reference Number	887-BA-021	C
Client	Arlington Investment Company Ltd	Date	Jan 10	Scale 1:100
Drawing	Proposed South Elevation	Drawing size	A3	



 <p>© Copyright</p>		Client Arlington Investment Company Ltd	
Project 78 Adelaide Road			
Drawing Title Proposed East Elevation			
Reference No. 887-BA-022		Rev. C	
Scale 1:100		Drawing size A2	
Date Jan 10			



NOTES.

Please note that all dimensions must be checked on site and not scaled off this drawing.

Planning Consent:
Until planning consent has been granted and all conditions contained in that consent complied with, no building works whatsoever should be undertaken. Any building works started beforehand are entirely at Client's own risk.

Building Regulations (Notice of Passing of Plans) Until unconditional approval of plans has been issued by Building control (The Council's District Surveyors Service), all works undertaken beforehand are entirely at Client's own risk. District Surveyors frequently require amendments to submitted plans, and any such changes or changes arising from different presumed site conditions, can radically affect building procedures.

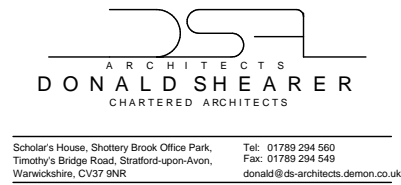
Therefore we do not recommend that any works at all are started before obtaining both planning & unconditional; Notice of Passing of Plans.

Preliminary	
Planning	
Building Regs.	
Tender	
Construction	
As-built	

Rev	Date	
A	Mar 10	Design amendments.
B	May 10	Design amendments.

File Ref: 900 - BA - Plans 7.pln

© Copyright



Project	78 Adelaide Road	Reference Number	887-BA-023 B
Client	Arlington Investment Company Ltd	Date	Jan 10
		Scale	1:100
Drawing	Proposed North Elevation	Drawing size	A3

Adelaide Community Garden

1 to 6

Hutchinson House

76



File ref:	900 - BA - Plans 7.pln
-----------	------------------------

NOTES.

Please note that all dimensions must be checked on site and not scaled off this drawing.

Planning Consent:
Until planning consent has been granted and all conditions contained in that consent complied with, no building works whatsoever should be undertaken. Any building works started beforehand are entirely at

Building Regulations (Notice of Passing of Plans) Until unconditional approval of plans has been issued by Building control (The Council's District Surveyors Service), all works undertaken beforehand are entirely at Client's own risk. District Surveyors frequently require amendments to submitted plans, and any such changes or changes arising from different presumed site conditions, can radically affect building procedures.

Therefore we do not recommend that any works at all are started before obtaining both planning & unconditional Notice of Passing of Plans.

Preliminary

Planning

Building Regs.

Tender

Construction

As-built

[illegible]

Scholars' House, Shotton Brook Office Park,
Timothy's Bridge Road, Stratford-upon-Avon,
Warwickshire, CV37 9NR

Tel : 01789 294 560
Fax : 01789 294 549
donald@ds-architects.demon.co.uk

Reference No.	887-BA-026
---------------	------------

© Copyright

Client	Arlington Investment Company Ltd
--------	----------------------------------

Project	78 Adelaide Road
---------	------------------

Drawing Title

Proposed Attic Plan

Scale	1:100	Drawing size	A2	Date	Jan 10
-------	-------	--------------	----	------	--------