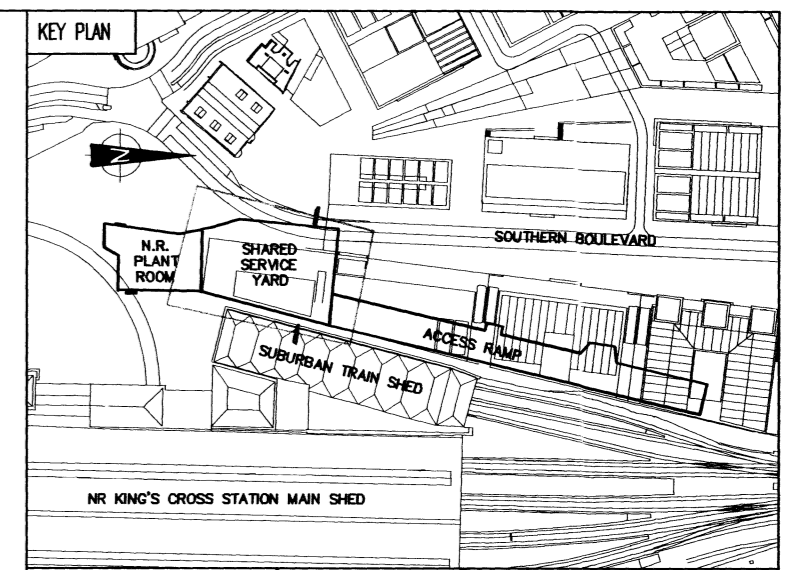
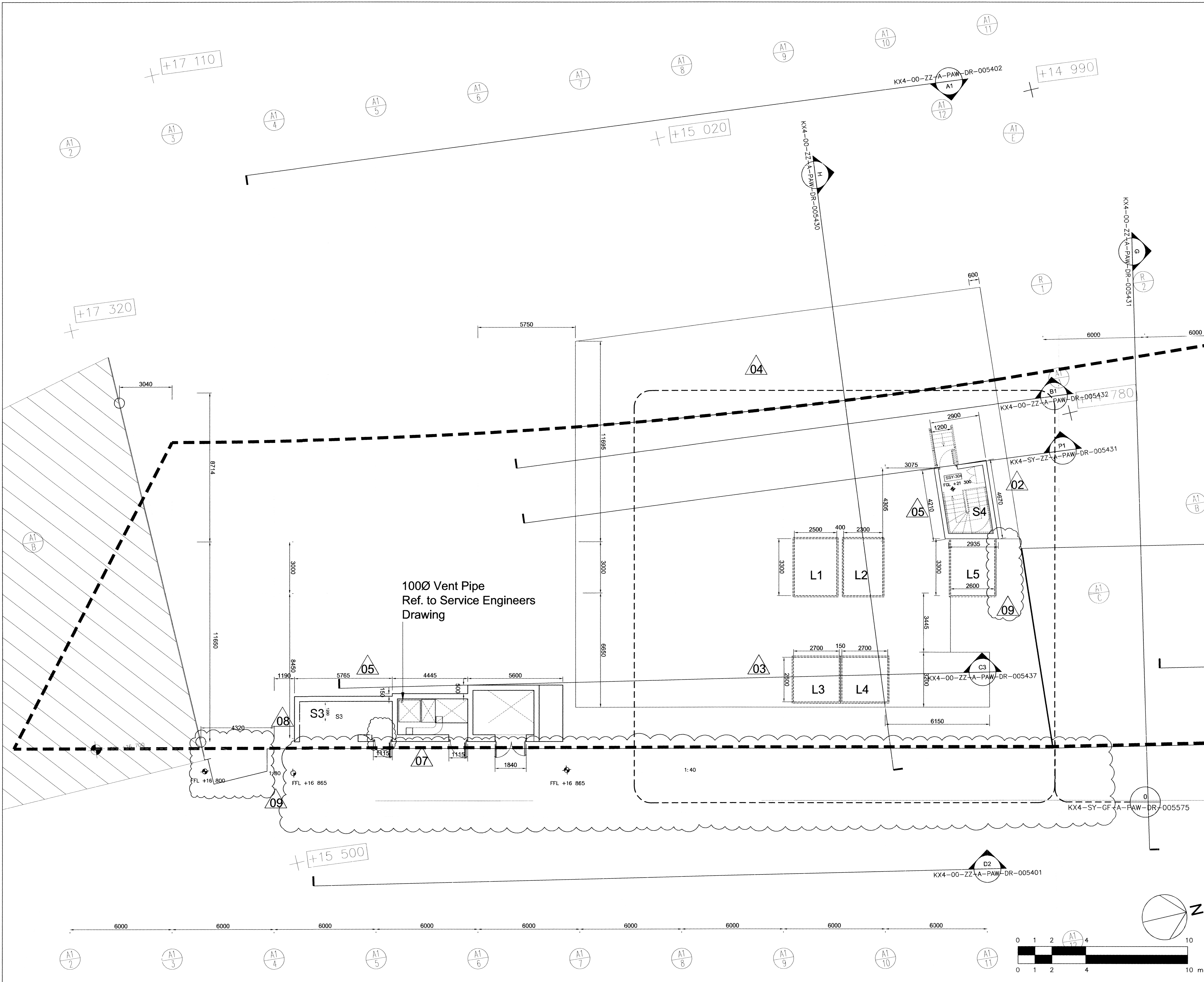


NOTE: THE PROPERTY OF THIS DRAWING AND DESIGN IS RESERVED IN DESIGNER AND MUST NOT BE COPIED OR REPRODUCED IN ANY MANNER WITHOUT THEIR WRITTEN CONSENT



Construction Risks	Maintenance/demolition Risks	Demolition/adaptation Risks

In addition to the hazard/risks normally associated with the types of work detailed on this drawing take note of the above.
It is assumed that all works on this drawing will be carried out by a competent contractor working, where appropriate, to an appropriate method statement.

SAFETY HEALTH AND ENVIRONMENTAL INFORMATION BOX

- NOTES
- ALL DIMENSIONS ARE IN MILLIMETERS
 - ALL LEVELS ARE IN METRES UNLESS SHOWN OTHERWISE

REV	DATE	BY	CHECKED BY	DATE	DESCRIPTION
09	19.12.08	R.M.	M.H.	19.12.08	Updated LIFT L5/Updated Maintenance strip
08	11.11.08	R.M.	M.H.	11.11.08	Ventilation Grille Structure Opening Revised According to ARUP Requirement
07	07.11.08	R.M.	M.H.	07.11.08	Revised Stair Following Building Controls Consultation
06	10.10.08	R.M.	M.H.	10.10.08	Revised Stair according to Building Regulation Part M
05	10.09.08	R.M.	M.H.	10.09.08	Revised according to client instruction no.3
04	20.08.08	R.M.	M.H.	20.08.08	Revised lift shafts according to Engineers drawing: WS-SA-03-0023
03	15.08.08	R.M.	M.H.	15.08.08	Revised lift shafts according to Engineers drawing: WS-SA-03-0023

REV	DATE	BY	CHECKED BY	DATE	DESCRIPTION
AB		R.M.	M.H.	19 DEC 2008	

SCALE: A1	ISSUING OFFICE	PROJECT NUMBER
1:100	PWA	3300

CLIENT APPROVAL	
A - APPROVED	
B - APPROVED WITH COMMENTS	
C - DO NOT USE - AMEND WITH COMMENTS AND RE-SUBMIT	

STATUS	PURPOSE OF ISSUE
S10	FOR CONSTRUCTION

Taylor Woodrow Construction Ltd
 TWC - Head Office
 41, Clarendon Road
 Watford,
 Hertfordshire
 WD17 1TR
 Tel: +44 (0)1923 478400

PROJECT
KING'S CROSS REDEVELOPMENT PROGRAMME

TITLE
**SHARED SERVICE YARD
 GROUND LEVEL
 REFLECTED CEILING**



Architect
Pascal+Watson architects
 5 Carlton Court 116 Putney Bridge Road London SW15 2NQ
 telephone +44 020 8874 1311
 facsimile +44 020 8874 2584
 www.pascal.co.uk

DRAWING NUMBER	REV
KX4-SY-GF-A-PAW-DR-005435	09

Keyplan, A1-PWA-3300, KX4-SY-GF-A-PAW-M2-005035, KX4-00-XX-A-PAW-M2-005101, KX4-00-XX-A-PAW-M2-005105