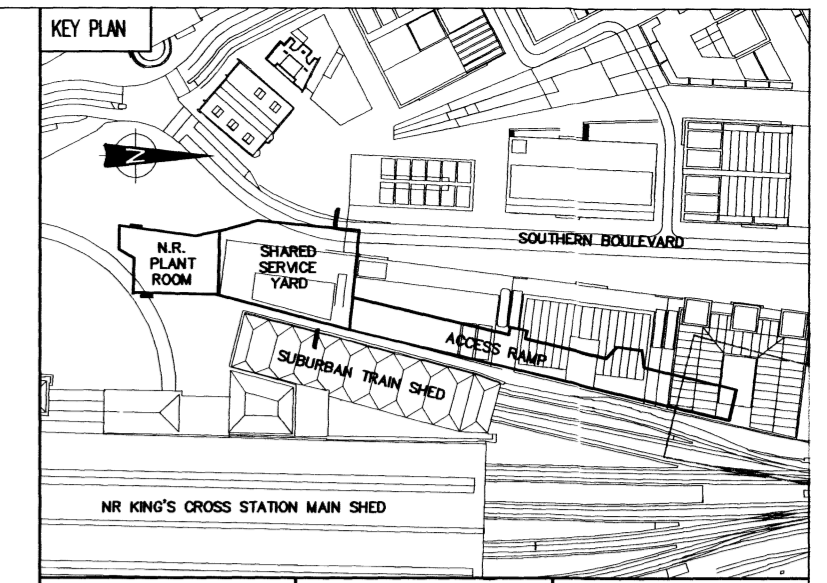


For continuation refer to drawing  
KX4-AR-B1-A-PAW-DR-005417

Possible Outline of proposed  
Building Above TBC by others



Construction Risks	Maintenance/cleaning Risks	Demolition/adaptation Risks
--------------------	----------------------------	-----------------------------

In addition to the hazard/risks normally associated with the types of work detailed on this drawing, take note of the above.  
It is assumed that all works on this drawing will be carried out by a competent contractor working, where appropriate, to an appropriate method statement.

SAFETY HEALTH AND ENVIRONMENTAL INFORMATION BOX

NOTES  
1. ALL DIMENSIONS ARE IN MILLIMETERS  
2. ALL LEVELS ARE IN METRES UNLESS SHOWN OTHERWISE

Signal Cable Trough Cover and Permanent Fence Updated according to manufacturer's Specifications.	07	A.R.	19.12.08	R.M.	19.12.08	M.H.	19.12.08
Service Revised according to the Plowman Croven Survey Drawing; Signal Cable Trough Cover Updated.	06	Y.Z.	31.10.08	R.M.	31.10.08	M.H.	31.10.08
Pavement Width Updated	05	Y.Z.	21.10.08	R.M.	21.10.08	M.H.	21.10.08
ISSUED FOR CONSTRUCTION Wall Thickness Updated According to Engineer's Drawing	04	Y.Z.	10.10.08	R.M.	10.10.08	M.H.	10.10.08
ISSUED FOR CONSTRUCTION	03	Y.Z.	05.09.08	R.M.	05.09.08	M.H.	05.09.08
ISSUED FOR INFORMATION: GENERAL UPDATE	02	A.P.	01.08.08	R.M.	01.08.08	M.H.	01.08.08

REVISION	DATE	BY	APPROVED BY	DATE
01	19 DEC 2008	Y.Z.	M.H.	

SCALE	ISSUING OFFICE	PROJECT NUMBER
1:100	PWA	3300

CLIENT APPROVAL	PURPOSE OF ISSUE
A - APPROVED	S10 FOR CONSTRUCTION
B - APPROVED WITH COMMENTS	
C - DO NOT USE - AMEND WITH COMMENTS AND RE-SUBMIT	

**Taylor Woodrow Construction Ltd**  
TWC - Head Office  
41, Clarendon Road  
Watford  
Hertfordshire  
WD17 1TR  
Tel: +44 (0)1923 478400

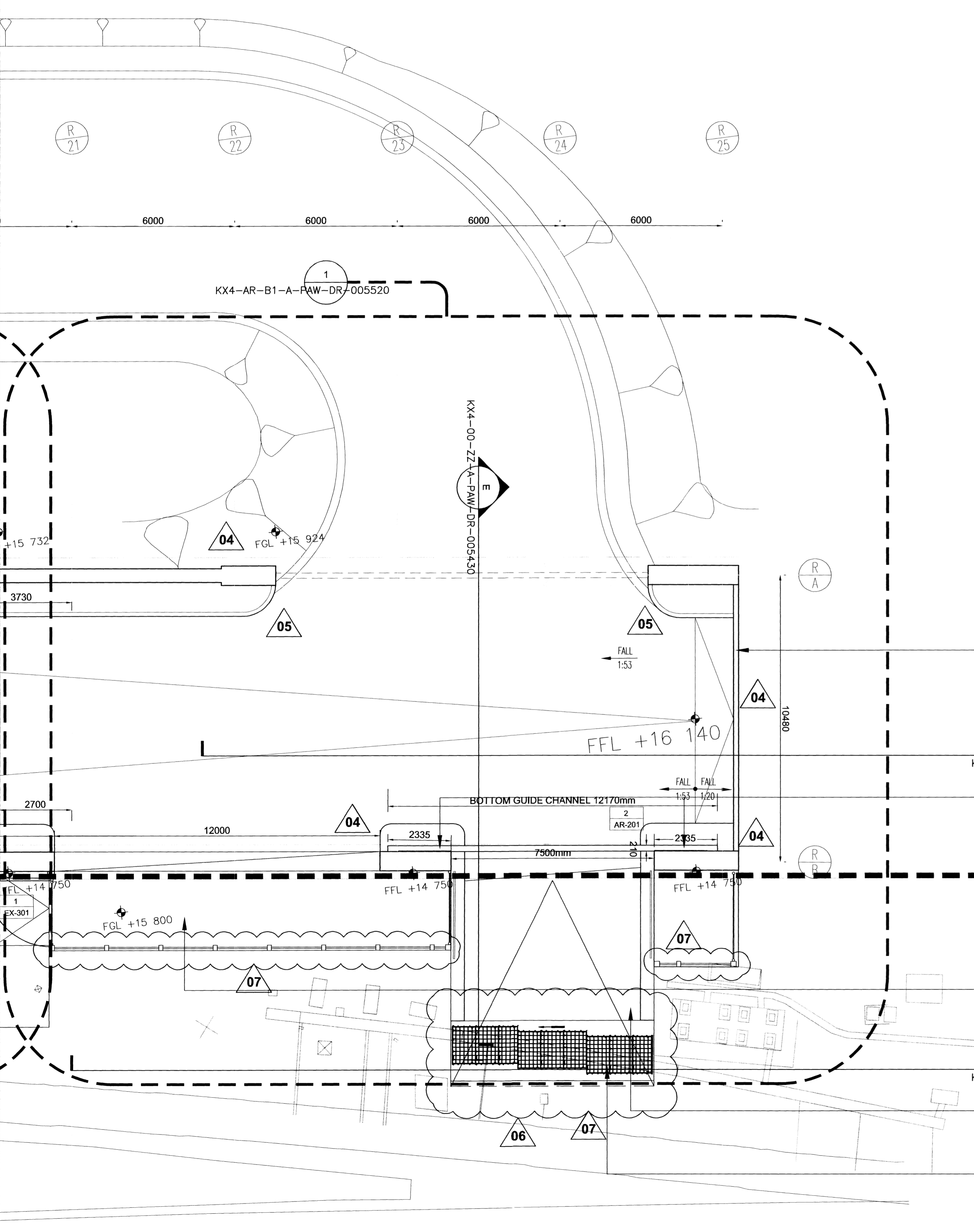
PROJECT  
KING'S CROSS REDEVELOPMENT PROGRAMME

TITLE  
ACCESS RAMP  
MEZZANINE LEVEL PLAN  
Sheet 1 of 3



Architect  
**Pascall+Watson architects**  
5 Carlton Court, 116 Putney Bridge Road London SW15 2ND  
Telephone: +44 (0)20 8874 1311  
Facsimile: +44 (0)20 8874 2584  
www.pascall.co.uk

DRAWING NUMBER	REV
KX4-AR-B1-A-PAW-DR-005416	07



Temporary Wall refer to  
Engineers Details

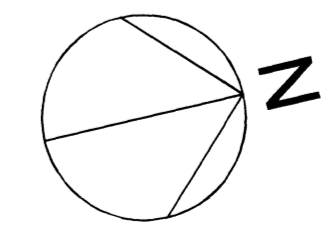
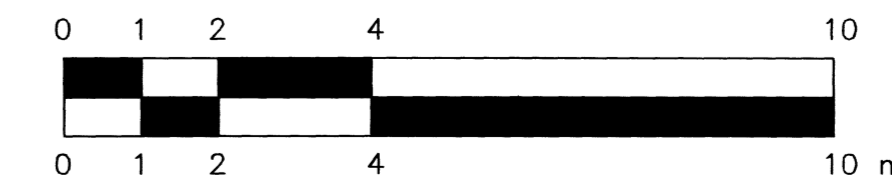
Steel Frame  
Sliding Gate

Possible Outline of proposed  
Building Above TBC by others

Lay By Area

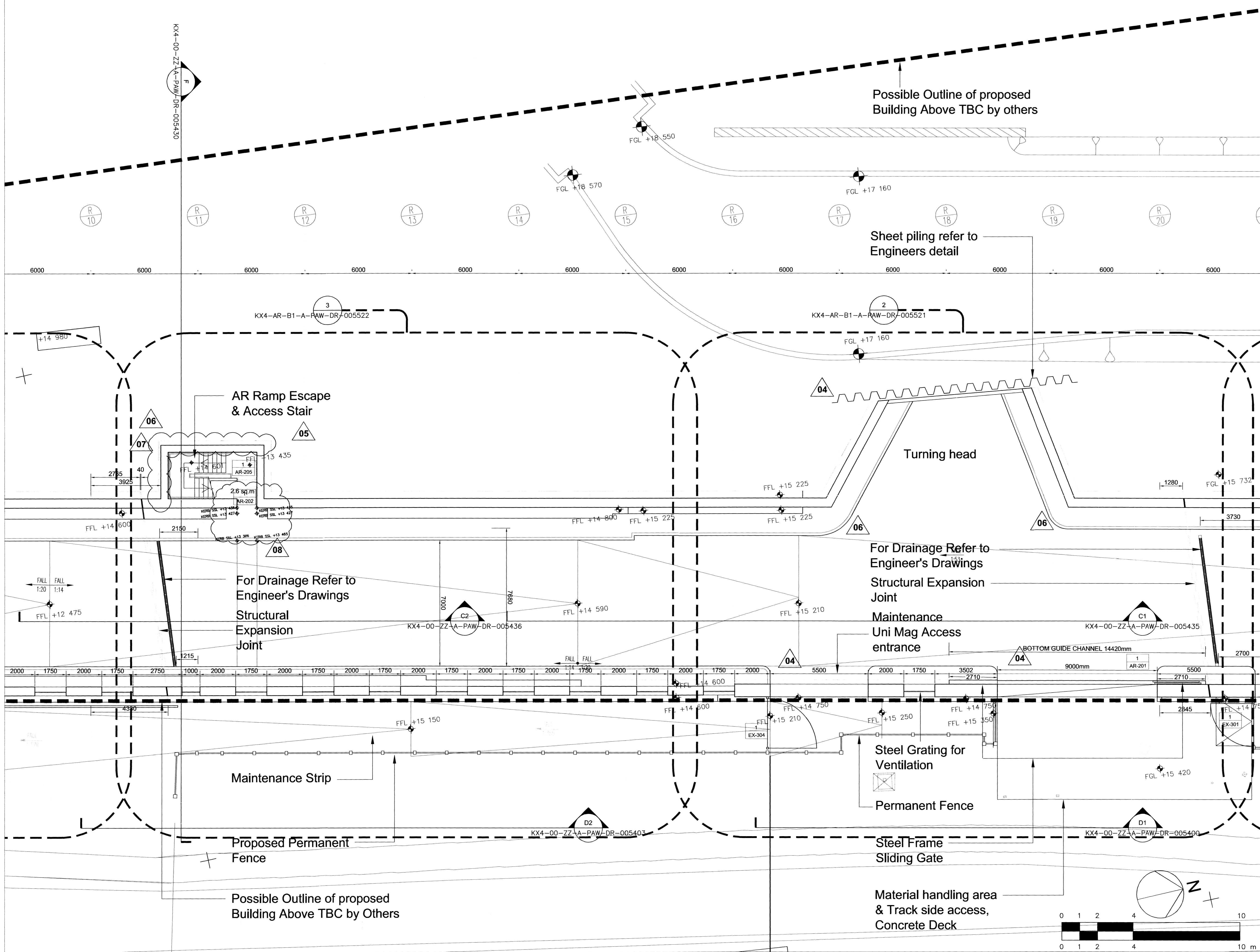
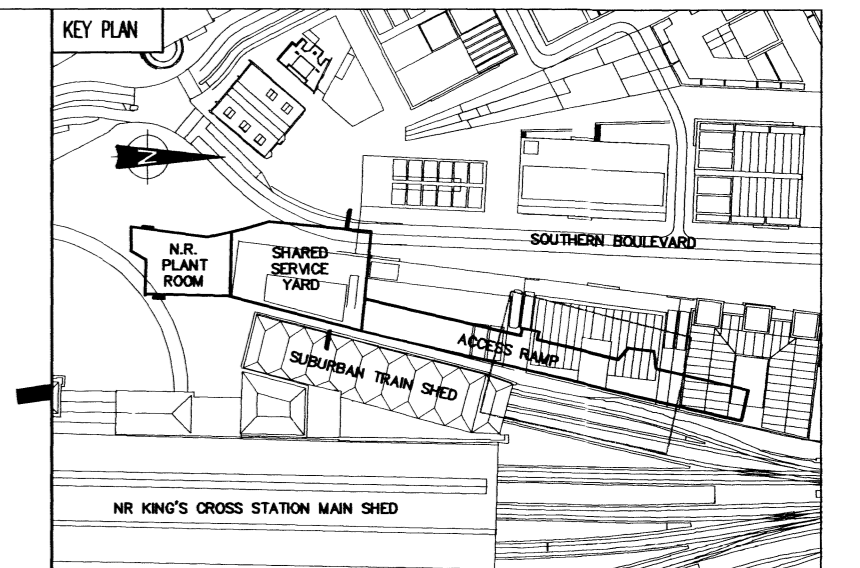
Track Access

Proposed troughing for  
Signal cables Covered by  
Steel Concrete Infill.



For continuation refer to drawing  
KX4-AR-B1-A-PAW-DR-005418

For continuation refer to drawing  
KX4-AR-B1-A-PAW-DR-005416



Construction Risks	Maintenance/cleaning Risks	Demolition/adaptation Risks
In addition to the hazard/risks normally associated with the types of work detailed on this drawing take note of the above. It is assumed that all works on this drawing will be carried out by a competent contractor working, where appropriate, to an appropriate method statement.		

SAFETY HEALTH AND ENVIRONMENTAL INFORMATION BOX					
NOTES					
1. ALL DIMENSIONS ARE IN MILLIMETERS					
2. ALL LEVELS ARE IN METRES UNLESS SHOWN OTHERWISE					

REV	DATE	BY	CHECKED BY	APPROVED BY	DESCRIPTION
08	12.19.08	R.M.	M.H.	M.H.	Changed the Kern stopping lines at stair SS
07	07.11.08	R.M.	M.H.	M.H.	File Cap Updated
06	07.11.08	R.M.	M.H.	M.H.	Staircase SS Updated
05	07.11.08	R.M.	M.H.	M.H.	Staircase SS Updated
04	17.10.08	R.M.	M.H.	M.H.	ISSUED FOR CONSTRUCTION Wall Thickness & Sheet piling Updated According to Engineer's Drawing
03	10.10.08	R.M.	M.H.	M.H.	ISSUED FOR CONSTRUCTION
02	05.09.08	R.M.	M.H.	M.H.	ISSUED FOR INFORMATION: GENERAL UPDATE
01	01.08.08	R.M.	M.H.	M.H.	ISSUED FOR INFORMATION: GENERAL UPDATE

SCALE	ISSUING OFFICE	PROJECT NUMBER
1:100	PWA	3300

CLIENT APPROVAL
A - APPROVED
B - APPROVED WITH COMMENTS
C - DO NOT USE - AMEND WITH COMMENTS AND RE-SUBMIT

STATUS	PURPOSE OF ISSUE
S10	FOR CONSTRUCTION

**Taylor Woodrow Construction Ltd**  
TWC - Head Office  
41, Clarendon Road  
Watford  
Hertfordshire  
WD17 1TR  
Tel: +44 (0)1923 478400

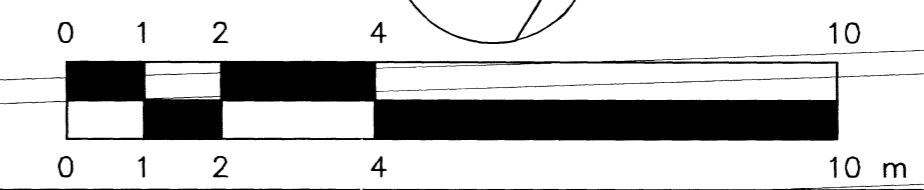
PROJECT  
KING'S CROSS REDEVELOPMENT PROGRAMME

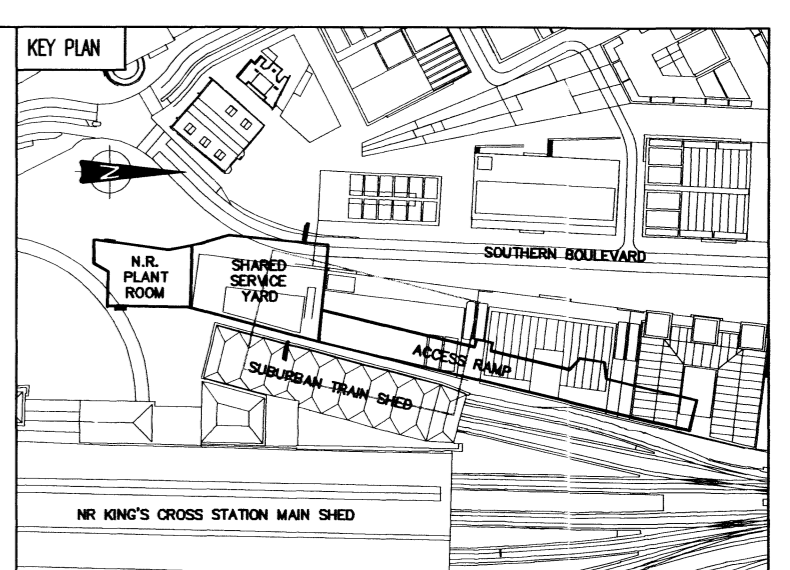
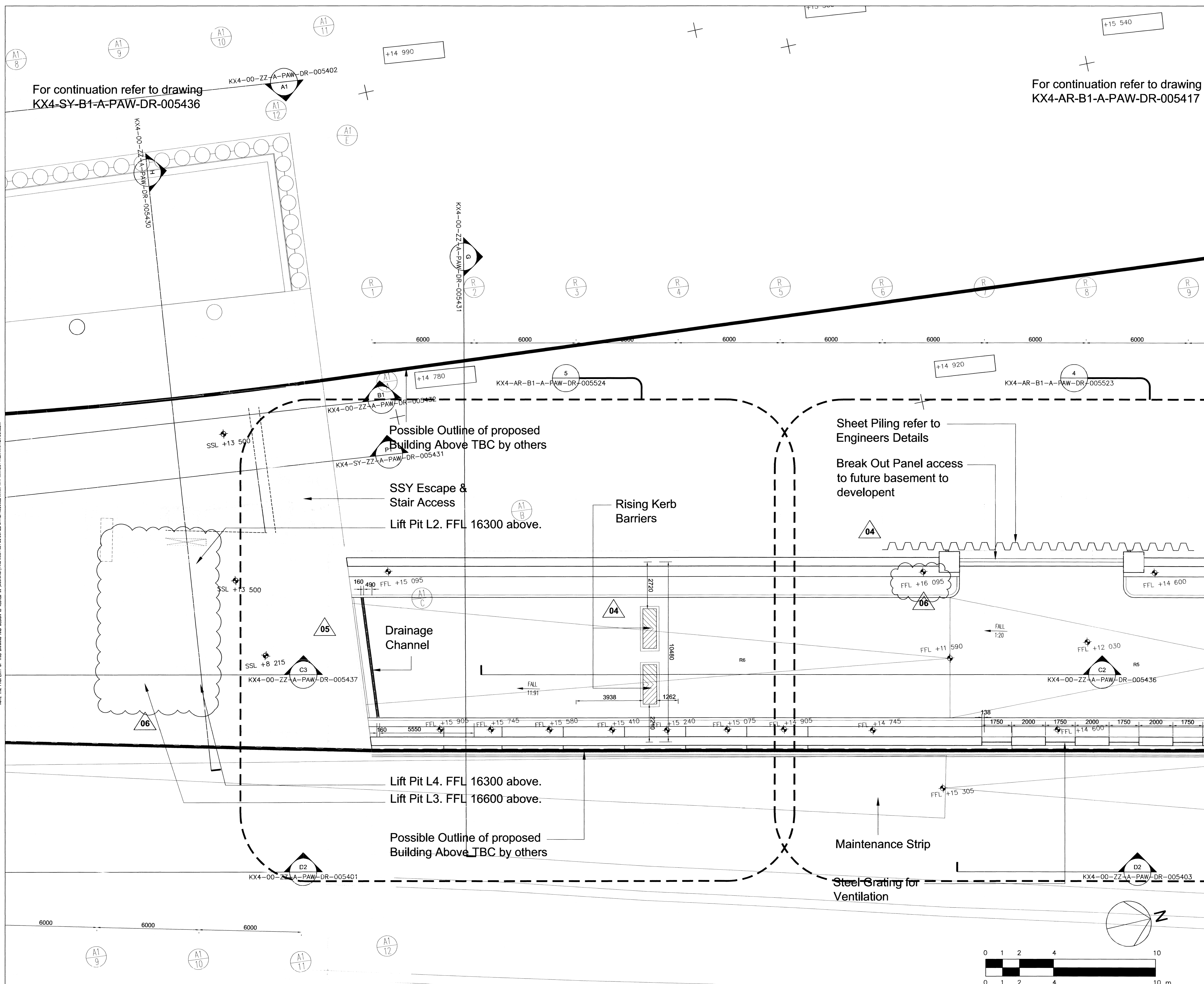
TITLE  
ACCESS RAMP  
MEZZANINE LEVEL PLAN  
Sheet 2 of 3

CLIENT  
**Network Rail**

Architect  
**Pascall + Watson architects**  
5 Carlson Court 116 Putney Bridge Road London SW15 2NQ  
Telephone +44 (0)20 8874 1311  
Facsimile +44 (0)20 8874 2584  
www.pascalls.co.uk  
This drawing is issued on behalf of Pascall + Watson architects limited.

DRAWING NUMBER	REV
KX4-AR-B1-A-PAW-DR-005417	08





Construction Risks	Maintenance/cleaning Risks	Demolition/Adaptation Risks

In addition to the hazards/risks normally associated with the types of work detailed on this drawing take note of the above.  
It is assumed that all works on this drawing will be carried out by a competent contractor working, where appropriate, to an appropriate method statement.

SAFETY HEALTH AND ENVIRONMENTAL INFORMATION BOX

NOTES  
1. ALL DIMENSIONS ARE IN MILLIMETERS  
2. ALL LEVELS ARE IN METRES UNLESS SHOWN OTHERWISE

REVISED LEVEL	REVISED LIFTS	GRAPHICAL REPRESENTATION
08	A,B	19.12.08 R,M 19.12.08 M,H 19.12.08

FIRE SHUTTER REVISED  
05 Y,Z 07.11.08 R,M 07.11.08 M,H 07.11.08

Sheet Piling Updated and Rising Kerb Barrier Position Changed According to Engineer's Drawing  
04 Y,Z 10.10.08 R,M 10.10.08 M,H 10.10.08

ISSUED FOR CONSTRUCTION  
03 Y,Z 25.09.08 R,M 25.09.08 M,H 25.09.08

ISSUED FOR INFORMATION: GENERAL UPDATE  
02 A,F 01.08.08 R,M 01.08.08 M,H 01.08.08

ISSUED FOR INFORMATION  
01 Y,Z 06.06.08 R,M 06.06.08 M,H 06.06.08

COMMENT

REV	DRAWN BY	CHECKED BY	DATE	APPROVED BY	A DATE
	Y,Z	R,M		M,H	12 DEC 2008

SCALES # A1 1:100  
ISSUING OFFICE PWA  
PROJECT NUMBER 3300

CLIENT APPROVAL  
A - APPROVED  
B - APPROVED WITH COMMENTS  
C - DO NOT USE - AMEND WITH COMMENTS AND RE-SUBMIT

STATUS  
PURPOSE OF ISSUE  
S10 FOR CONSTRUCTION

Taylor Woodrow Construction Ltd  
TWCC - Head Office  
41, Clarendon Road  
Watford  
Hertfordshire  
WD17 1TR  
Tel: +44 (0)1923 478400

PROJECT  
KING'S CROSS REDEVELOPMENT PROGRAMME

TITLE  
ACCESS RAMP  
MEZZANINE LEVEL PLAN  
Sheet 3 of 3

CLIENT  
Network Rail

Architect  
Pascall + Watson architects  
5, Carlton Court, 116 Putney Bridge Road London SW15 2NG  
Telephone: +44 (0)20 8874 1311  
Facsimile: +44 (0)20 8874 2584  
www.pascall.co.uk

This drawing is issued on behalf of Pascall + Watson architects limited.

DRAWING NUMBER	REV
KX4-AR-B1-A-PAW-DR-005418	06



NOTE: THE PROPERTY OF THIS DRAWING AND DESIGN IS KEPT IN RESERVE AND MUST NOT BE REPRODUCED OR REPRODUCED IN ANY MANNER WITHOUT WRITTEN CONSENT.