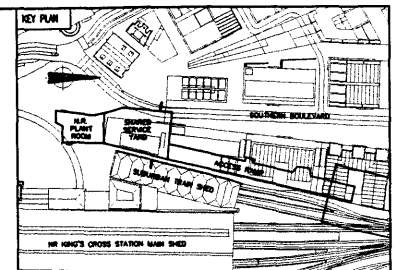
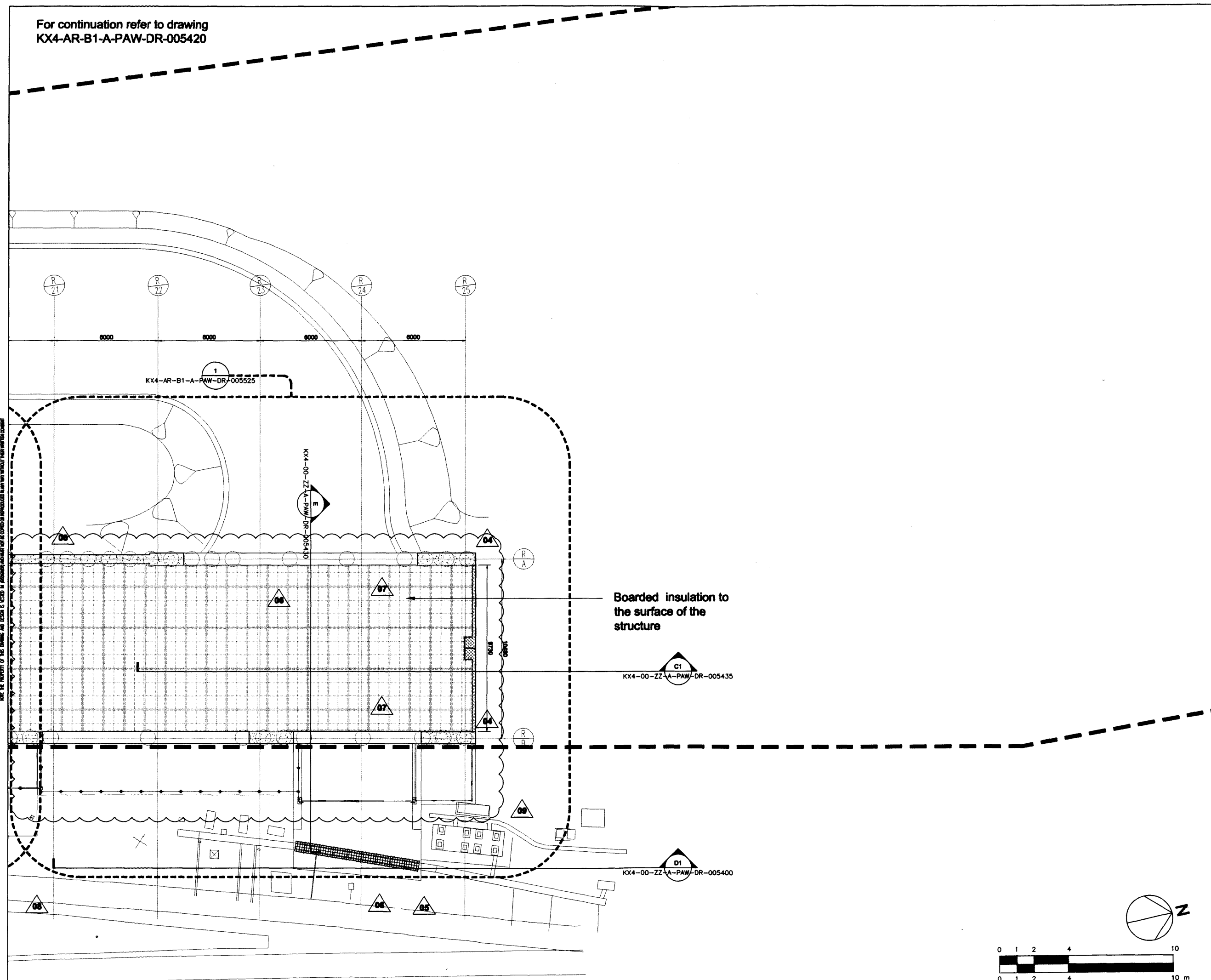


For continuation refer to drawing
KX4-AR-B1-A-PAW-DR-005420



Construction Risk	Maintenance/Cleaning Risk	Demolition/Obstruction Risk
-------------------	---------------------------	-----------------------------

In addition to the hazard/risk normally associated with the types of work detailed on this drawing take note of the above.
It is assumed that all works on this drawing will be carried out by a competent contractor working, where appropriate, to an appropriate method statement.

SAFETY HEALTH AND ENVIRONMENTAL INFORMATION BOX

- NOTES**
1. ALL DIMENSIONS ARE IN MILLIMETERS
 2. ALL LEVELS ARE IN METRES UNLESS SHOWN OTHERWISE

General structural update. Fence modified following instruction 31 001.				
09	AM	30.03.10	R.M	30.03.10 M.H 30.03.10
Insulation Boards added, fire of loop revised.				
08	AM	01.05.08	R.M	01.05.08 M.H
ACCESS RAMP CEILING UPDATED.				
07	A.B	18.01.08	R.M	18.01.08 M.H 18.01.08
Signal Cable Trough Cover Updated according to manufacturer's Specifications.				
06	A.B	18.12.08	R.M	18.12.08 M.H 18.12.08
Services Routed according to the Plenum Crown Survey Drawing. Signal Cable Trough Cover Updated.				
05	Y.Z	07.11.08	R.M	07.11.08 M.H 07.11.08
Revised Wall Thickness According to Listed Engineer Drawing. Holes Channels Removed as perutory instruction.				
04	Y.Z	10.10.08	R.M	10.10.08 M.H 10.10.08
ISSUED FOR CONSTRUCTION				
03	Y.Z	05.09.08	R.M	05.09.08 M.H 05.09.08

REV	DATE	BY	CHKD BY	DATE	APPROVED BY	DATE
		Y.Z	R.M		M.H	19 DEC 2008

SCALE: # A1	ISSUING OFFICE	PROJECT NUMBER
1:100	PWA	3300

CLIENT APPROVAL	A - APPROVED
	B - APPROVED WITH COMMENTS
	C - DO NOT USE - AMENDED WITH COMMENTS AND RE-SUBMIT

S10 FOR CONSTRUCTION

Taylor Woodrow Construction Ltd
 TWC - Head Office
 41, Clarendon Place
 Watlington
 Oxfordshire
 OX17 1TY
 Tel: +44 (0)1823 478400

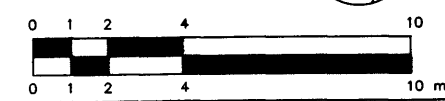
KING'S CROSS REDEVELOPMENT PROGRAMME

**ACCESS RAMP MEZZANINE LEVEL PLAN
REFLECTED CEILING
Sheet 1 of 3**

Network Rail

Architect
Pascall+Watson architects
 5 Carlton Court, 116 Putney Bridge Road, London SW15 2NQ
 Telephone +44 (0)20 8874 1311
 Facsimile +44 (0)20 8874 2584
 www.pascall.co.uk
 This drawing is issued on behalf of Pascall+Watson architects limited.

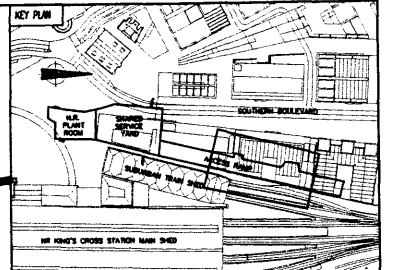
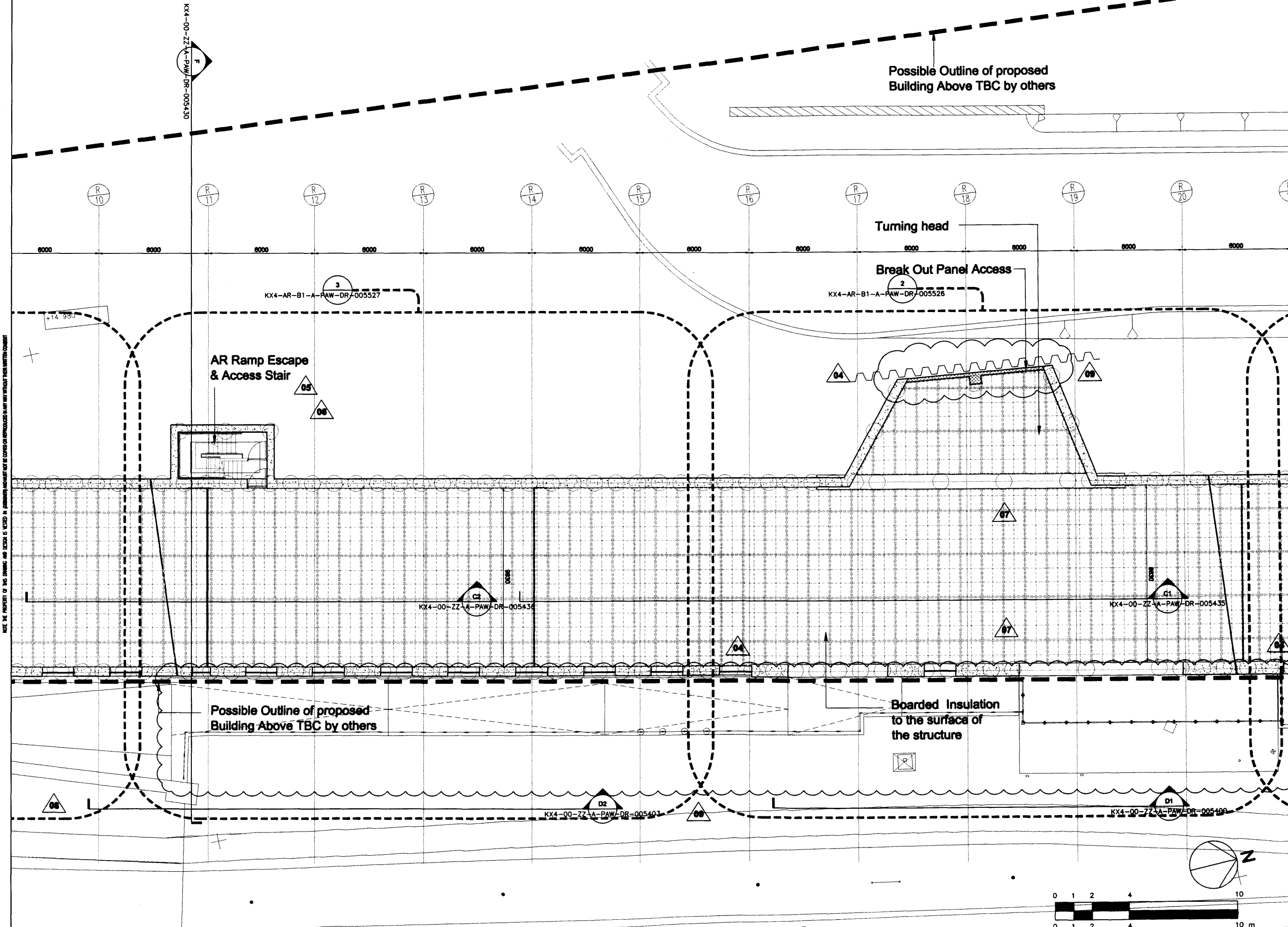
PROJECT NUMBER	REV
KX4-AR-B1-A-PAW-DR-005419	09



For continuation refer to drawing
KX4-AR-B1-A-PAW-DR-005421

For continuation refer to drawing
KX4-AR-B1-A-PAW-DR-005419

NOTE: THE PROPERTY OF THIS DRAWING AND DESIGN IS RESERVED BY ARCHITECTS WHOSE NAME IS VISIBLE ON THIS DRAWING. ANY UNAUTHORIZED REPRODUCTION OR USE WITHOUT THEIR WRITTEN CONSENT IS PROHIBITED.



Construction Risk	Maintenance/Operational Risk	Commissioning/Operational Risk

In addition to the hazards/risks normally associated with the types of work detailed on this drawing take note of the above.
It is assumed that all work on this drawing will be carried out by a competent contractor working, where appropriate, to an appropriate method statement.

SAFETY HEALTH AND ENVIRONMENTAL INFORMATION BOX

NOTES

1. ALL DIMENSIONS ARE IN MILLIMETERS
2. ALL LEVELS ARE IN METRES UNLESS SHOWN OTHERWISE

General structural updates. Fence modified following instruction SI 001.	DATE	BY	REVISION
08 A.M.	30.03.10	R.M.	M.H.
08 A.M.	31.05.09	R.M.	M.H.
07 A.B.	18.01.09	R.M.	M.H.
04 Y.Z.	07.11.08	R.M.	M.H.
03 Y.Z.	17.10.08	R.M.	M.H.
04 Y.Z.	10.10.08	R.M.	M.H.
03 Y.Z.	30.08.08	R.M.	M.H.

ISSUED FOR CONSTRUCTION	DATE	BY	REVISION
03 Y.Z.	30.08.08	R.M.	M.H.

DESIGNED BY	CHECKED BY	APPROVED BY	DATE
Y.Z.	R.M.	M.H.	19 DEC 2008

SCALE	ISSUING OFFICE	PROJECT NUMBER
1:100	PWA	3300

CLIENT APPROVAL
A - APPROVED
B - APPROVED WITH COMMENTS
C - DO NOT USE - AMEND WITH COMMENTS AND RE-SUBMIT

STATUS: **S10 FOR CONSTRUCTION**

Taylor Woodrow Construction Ltd
 TWC - Head Office
 41, Chiseldon Road
 Westford
 Hertfordshire
 WD17 1TR
 Tel: +44 (0)1823 478400

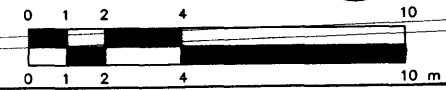
PROJECT: **KING'S CROSS REDEVELOPMENT PROGRAMME**

TITLE: **ACCESS RAMP MEZZANINE LEVEL PLAN REFLECTED CEILING DRAWINGS Sheet 2 of 3**



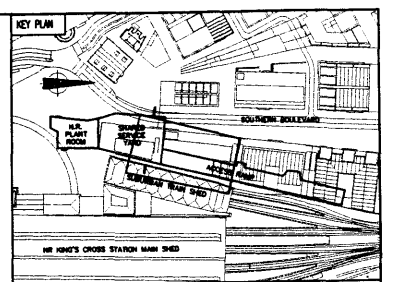
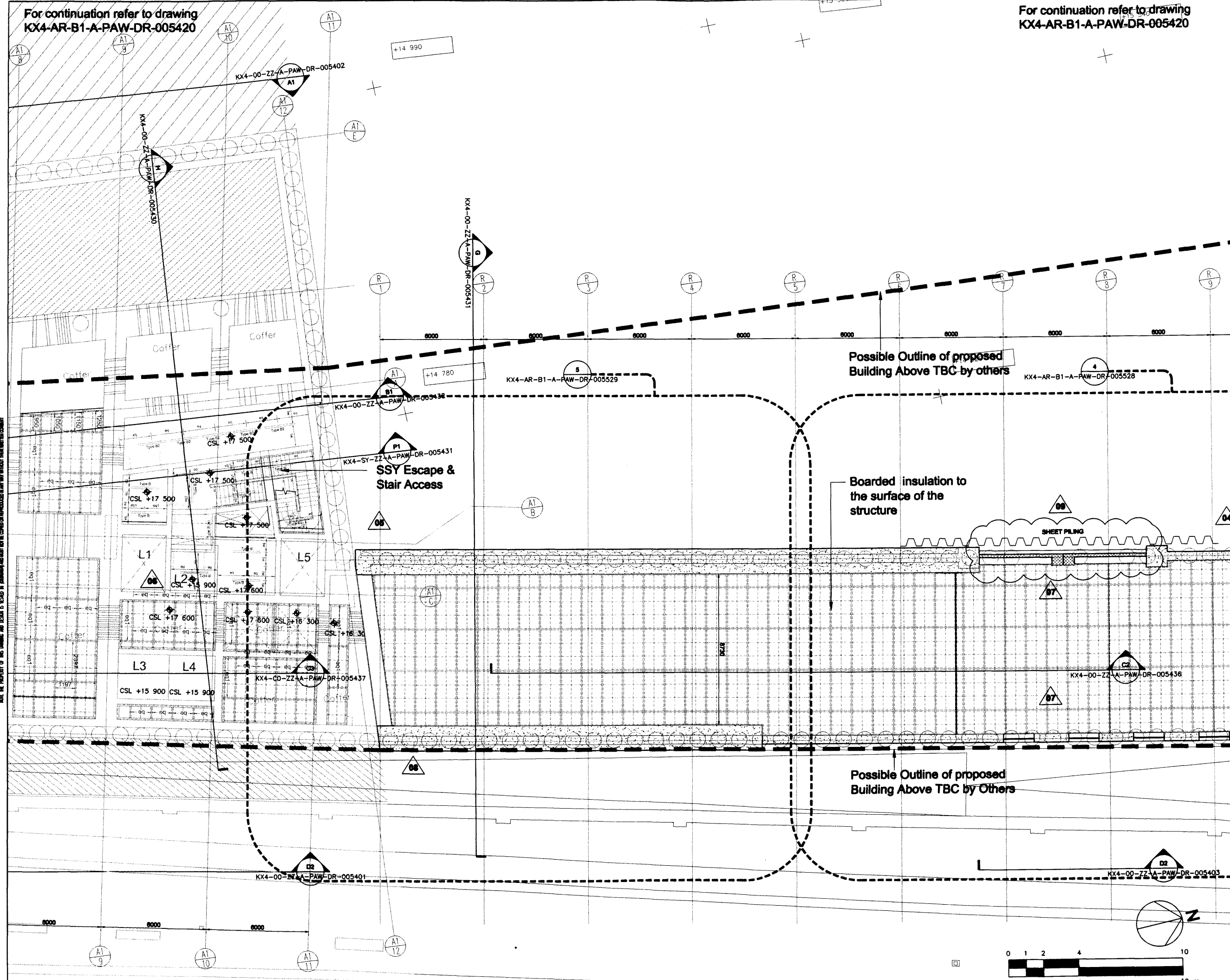
Architect:
Pascal+Watson architects
 5 Carlton Court, 118 Putney Bridge Road London SW15 2NQ
 Telephone +44 (0)20 8874 1311
 Facsimile +44 (0)20 8874 2584
 www.pascal.co.uk
 This drawing is issued on behalf of Pascal+Watson architects limited.

DRAWING NUMBER	REV
KX4-AR-B1-A-PAW-DR-005420	09



For continuation refer to drawing
KX4-AR-B1-A-PAW-DR-005420

For continuation refer to drawing
KX4-AR-B1-A-PAW-DR-005420



CONSTRUCTION RATES

Construction Rate	Highway/Construction Rate	Demolition/Construction Rate
In addition to the hourly rates normally associated with the types of work detailed on this drawing take note of the above.		
It is assumed that all work on this drawing will be carried out by a competent contractor working, where appropriate, to an appropriate method statement.		

SAFETY HEALTH AND ENVIRONMENTAL INFORMATION BOX

NOTES

1. ALL DIMENSIONS ARE IN MILLIMETERS
2. ALL LEVELS ARE IN METRES UNLESS SHOWN OTHERWISE

GENERAL STRUCTURAL UPDATE FOLLOWING ENGINEER'S CHANGES

NO	REV	DESCRIPTION	DATE
01	RM	Block Wall Updated	30.03.10
02	RM	Insulation Boards added	01.05.09
03	RM	ACCESS RAMP CEILING UPDATED	18.01.09
04	RM	Revised the LRI wall Snes	18.12.08
05	RM	FIRE SHUTTER REVISED	07.11.08
06	RM	Revised Wall Thickness According to Latest Engineer Drawing, Hallow Channels Removed as per Rotary Instruction	10.10.08
07	RM	ISSUED FOR CONSTRUCTION	05.09.08

OWNED BY	DESIGNED BY	CHECKED BY	APPROVED BY	DATE
Y.Z	R.M	M.H		19 DEC 2008

ISSUING OFFICE: PWA PROJECT NUMBER: 3300

CLIENT APPROVAL

A - APPROVED
B - APPROVED WITH COMMENTS
C - DO NOT USE - AMEND WITH COMMENTS AND RE-SUBMIT

STATUS: S10 FOR CONSTRUCTION

Taylor Woodrow Construction Ltd
41, Clarendon Road
Weyford
Hertfordshire
WD17 1TR
Tel: +44 (0)1823 478400

PROJECT: KING'S CROSS REDEVELOPMENT PROGRAMME

TITLE: ACCESS RAMP MEZZANINE LEVEL PLAN REFLECTED CEILING Sheet 3 of 3

CLIENT: Network Rail

Architect: Pascall + Watson architects
5 Carlton Court, 118 Putney Bridge Road London SW15 2HQ
Telephone +44 (0)20 8574 1311
Facsimile +44 (0)20 8574 2584
www.pascall.co.uk

DRAWING NUMBER: KX4-AR-B1-A-PAW-DR-005421

REVISION: 09

MAKE THE PROPERTY OF THIS DRAWING AND DESIGN IS RESERVED BY PATENT RIGHTS AND NOT BE COPIED OR REPRODUCED IN ANY MANNER WITHOUT WRITTEN PERMISSION

Copyright, A1-PWA-3300, KX4-00-ZZ-A-PAW-DR-005401, KX4-00-ZZ-A-PAW-DR-005402, KX4-00-ZZ-A-PAW-DR-005403, KX4-AR-B1-A-PAW-DR-005528, KX4-AR-B1-A-PAW-DR-005529, KX4-AR-B1-A-PAW-DR-005530, KX4-AR-B1-A-PAW-DR-005531, KX4-AR-B1-A-PAW-DR-005532, KX4-AR-B1-A-PAW-DR-005533, KX4-AR-B1-A-PAW-DR-005534, KX4-AR-B1-A-PAW-DR-005535, KX4-AR-B1-A-PAW-DR-005536, KX4-AR-B1-A-PAW-DR-005537, KX4-AR-B1-A-PAW-DR-005538, KX4-AR-B1-A-PAW-DR-005539, KX4-AR-B1-A-PAW-DR-005540, KX4-AR-B1-A-PAW-DR-005541, KX4-AR-B1-A-PAW-DR-005542, KX4-AR-B1-A-PAW-DR-005543, KX4-AR-B1-A-PAW-DR-005544, KX4-AR-B1-A-PAW-DR-005545, KX4-AR-B1-A-PAW-DR-005546, KX4-AR-B1-A-PAW-DR-005547, KX4-AR-B1-A-PAW-DR-005548, KX4-AR-B1-A-PAW-DR-005549, KX4-AR-B1-A-PAW-DR-005550, KX4-AR-B1-A-PAW-DR-005551, KX4-AR-B1-A-PAW-DR-005552, KX4-AR-B1-A-PAW-DR-005553, KX4-AR-B1-A-PAW-DR-005554, KX4-AR-B1-A-PAW-DR-005555, KX4-AR-B1-A-PAW-DR-005556, KX4-AR-B1-A-PAW-DR-005557, KX4-AR-B1-A-PAW-DR-005558, KX4-AR-B1-A-PAW-DR-005559, KX4-AR-B1-A-PAW-DR-005560, KX4-AR-B1-A-PAW-DR-005561, KX4-AR-B1-A-PAW-DR-005562, KX4-AR-B1-A-PAW-DR-005563, KX4-AR-B1-A-PAW-DR-005564, KX4-AR-B1-A-PAW-DR-005565, KX4-AR-B1-A-PAW-DR-005566, KX4-AR-B1-A-PAW-DR-005567, KX4-AR-B1-A-PAW-DR-005568, KX4-AR-B1-A-PAW-DR-005569, KX4-AR-B1-A-PAW-DR-005570, KX4-AR-B1-A-PAW-DR-005571, KX4-AR-B1-A-PAW-DR-005572, KX4-AR-B1-A-PAW-DR-005573, KX4-AR-B1-A-PAW-DR-005574, KX4-AR-B1-A-PAW-DR-005575, KX4-AR-B1-A-PAW-DR-005576, KX4-AR-B1-A-PAW-DR-005577, KX4-AR-B1-A-PAW-DR-005578, KX4-AR-B1-A-PAW-DR-005579, KX4-AR-B1-A-PAW-DR-005580, KX4-AR-B1-A-PAW-DR-005581, KX4-AR-B1-A-PAW-DR-005582, KX4-AR-B1-A-PAW-DR-005583, KX4-AR-B1-A-PAW-DR-005584, KX4-AR-B1-A-PAW-DR-005585, KX4-AR-B1-A-PAW-DR-005586, KX4-AR-B1-A-PAW-DR-005587, KX4-AR-B1-A-PAW-DR-005588, KX4-AR-B1-A-PAW-DR-005589, KX4-AR-B1-A-PAW-DR-005590, KX4-AR-B1-A-PAW-DR-005591, KX4-AR-B1-A-PAW-DR-005592, KX4-AR-B1-A-PAW-DR-005593, KX4-AR-B1-A-PAW-DR-005594, KX4-AR-B1-A-PAW-DR-005595, KX4-AR-B1-A-PAW-DR-005596, KX4-AR-B1-A-PAW-DR-005597, KX4-AR-B1-A-PAW-DR-005598, KX4-AR-B1-A-PAW-DR-005599, KX4-AR-B1-A-PAW-DR-005600