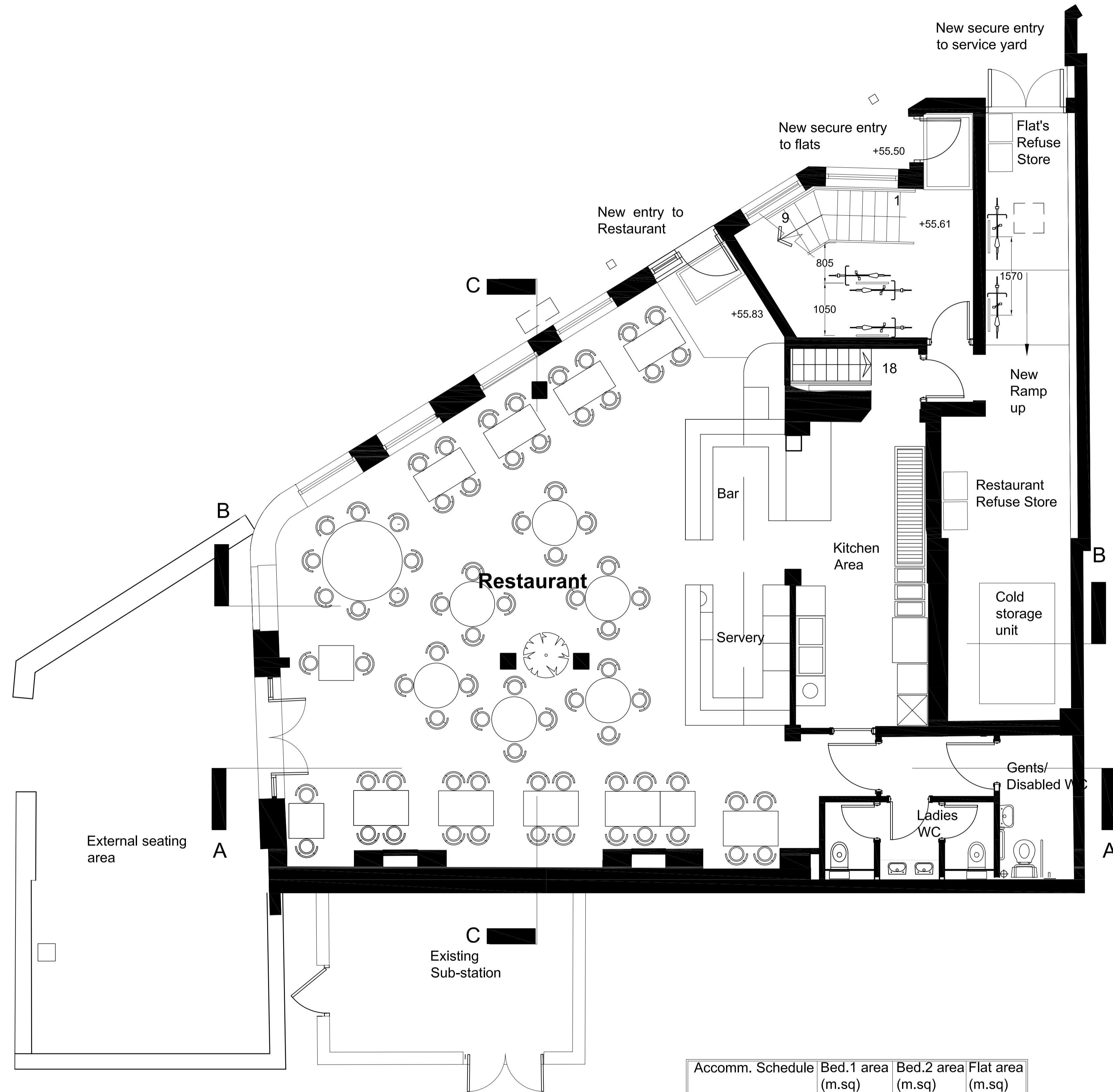
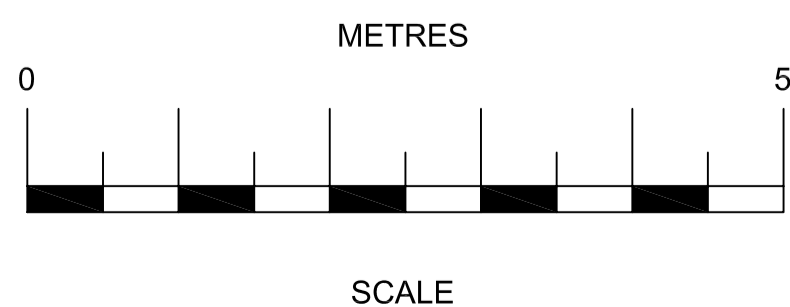
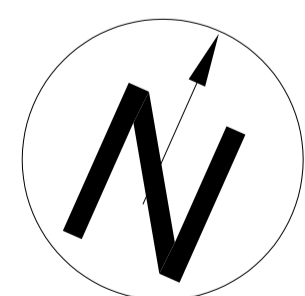


**BASEMENT FLOOR PLAN 1:50**



**GROUND FLOOR PLAN 1:50**



Accomm.	Schedule	Bed.1 area (m.sq)	Bed.2 area (m.sq)	Flat area (m.sq)
Flat 1a	1B x 2P	15.00	n/a	55.85
Flat 1b	2B x 3P	13.42	9.97	63.65
Flat 2a	2B x 3P	12.21	9.92	60.00
Flat 2b	2B x 3P	13.42	9.97	63.65
Flat 3	2B x 4P	13.72	13.86	81.00

Rev. B 23.04.10 - Entrance to new flats and cycle parking amended to comply with planning officer advise  
 Rev. A 23.11.09 - Basement plan added, 1:100 plans removed and dwg. no altered.



2nd Floor East,  
 98 White Lion Street,  
 Islington,  
 London N1 9PF

roject:  
**Extension to the  
 Carob Tree Restaurant  
 Highgate,  
 Camden**

Title:  
**Proposed Basement and  
 Ground Floor Plans**

Scale:  
**1:50 (@A1)**  
 Drawn By:  
**S.D.G**  
 Drawing No.  
**SA/PL/101/06**

Date:  
**Apr. 10'**  
 Checked:  
**D.U.**  
 Revision  
**B**