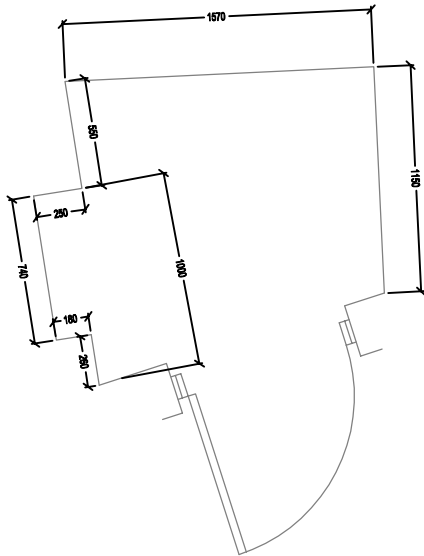


LEGEND

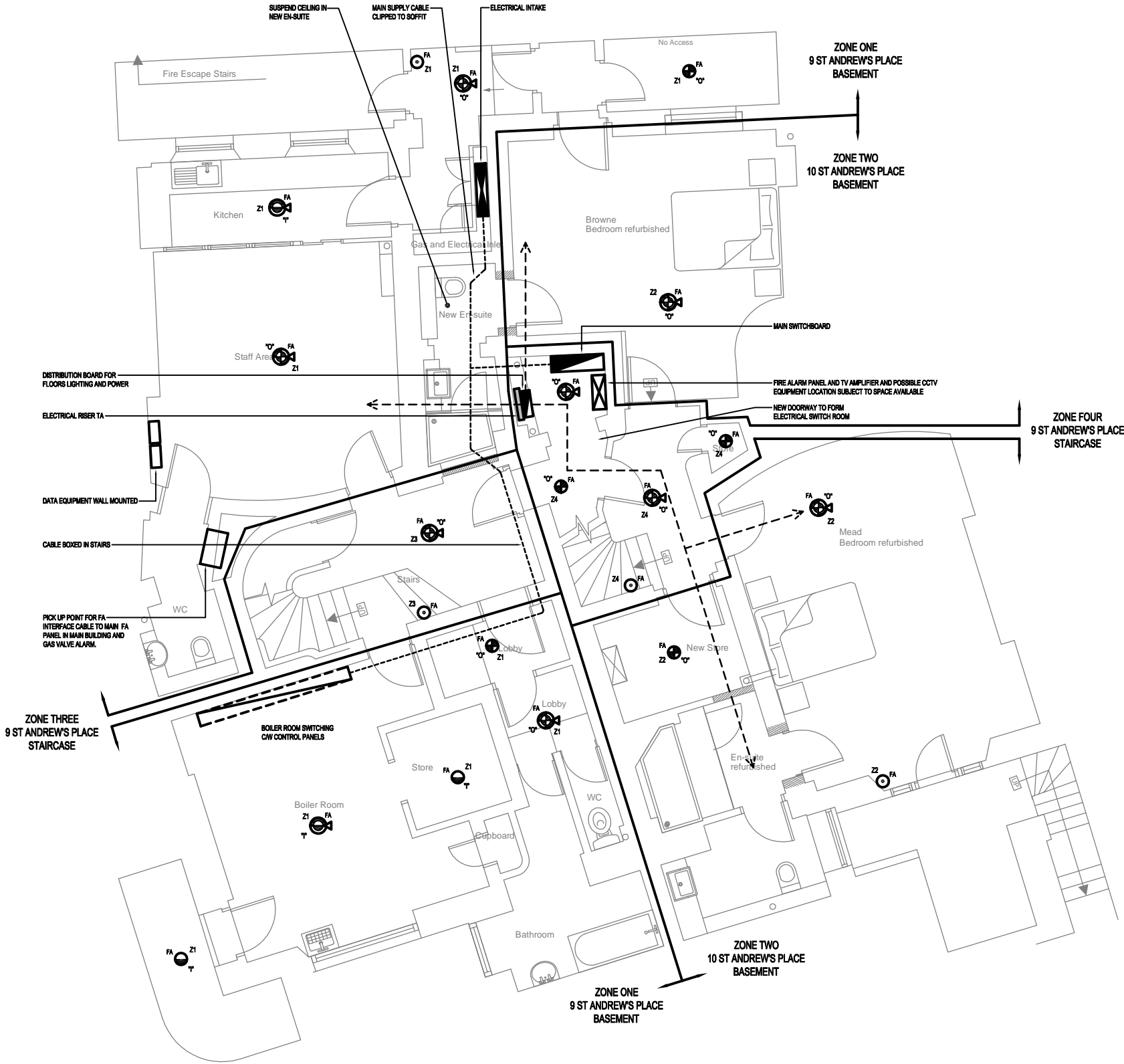
- FA BREAK GLASS POINT
- FA SMOKE DETECTOR (O = OPTICAL, I = IONISATION)
- ⊙ FA SMOKE DETECTOR WITH SOUNDER AND BEACON BASE
- ⊙ FA HEAT DETECTOR WITH SOUNDER AND BEACON BASE
- ⊙ FA HEAT DETECTOR (FIXED TEMP)
- ⊙ FA RADIO OPERATED ELECTRICAL DOOR HOLD OPEN DEVICE (TO CLOSE ON OPERATION OF THE FIRE ALARM SYSTEM)
- INDICATES CABLE ROUTES FOR LIGHTING, POWER, FIRE ALAR DATA AND TV
- LIGHTING AND FIRE ALARM IN FLOOR ABOVE POWER, DATA AND TV IN FLOOR.

NOTES:

- 9 AND 10 ST ANDREWS PLACE, TO BE PROVIDED WITH NEW FIRE ALARM SYSTEM TO L1 CATEGORY OF COVERAGE IN ACCORDANCE WITH BRITISH STANDARD 5839.
- 9 AND 10 ST ANDREWS PLACE TO BE PROVIDED WITH NEW EMERGENCY LIGHTING TO ALL ESCAPE ROUTES, COMMON AREAS AND BEDROOM TOILETS/BATH AREAS IN ACCORDANCE WITH BS 5266.
- "YE" ADJACENT GENERAL PURPOSE LUMINAIRE INDICATES LUMINAIRE WITH 3 HOUR NON MAINTAINED SELF CONTAINED EMERGENCY LIGHTING FACILITY
- "EXT" INDICATES NON MAINTAINED 3 HOUR SELF CONTAINED ILLUMINATED EXIT SIGN.



ELECTRICAL SWITCHROOM
1:20



BASEMENT PLAN

P4	07.06.10	SCALE BAR AND NORTH POINTER ADDED	GK	JB	ADM
P3	23.04.10	FA AND EL GENERAL NOTES ADDED	GK	JB	ADM
P2	10.03.10	ELECTRICAL SWITCHROOM DETAIL ADDED	JB	GK	ADM
P1	08.02.10	INDICATIVE FIRE ALARM SYSTEM ADDED.	JB	GK	ADM
REV	DATE	DESCRIPTION	ALT	DO	ORIG
			CHK	CHK	CHK

TGA Consulting Engineers LLP
Armstrong House,
Norton Road
Stevenage
Hertfordshire, SG1 2LX
T: 01438 314422
F: 01438 314433
E: stevenage@tgace.co.uk

tga
Consulting Engineers LLP

Project
ROYAL COLLEGE OF PHYSICIANS
9&10 ST ANDREWS PLACE

Title
ELECTRICAL ENGINEERING SERVICES
PROPOSED BASEMENT PLAN
INDICATIVE MAIN CABLE ROUTES AND
INDICATIVE FIRE ALARM SYSTEM

Architect
EDGINGTON SPINK-HYNE

Client
ROYAL COLLEGE OF PHYSICIANS

Drawing Number	Revision	Scale
6870E(60)001	P4	A1 1:50
		A3 N.T.S.
		A4 N.T.S.

Path
J:\6870\ELEC\

Architects Drawing Reference
4850-1200 Rev B

Drawn	DO Check	Originator	Approved
JB	GK	ADM	ADM

Date	Status
2010 JAN	

