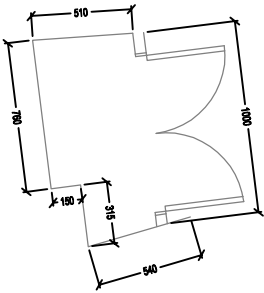


LEGEND

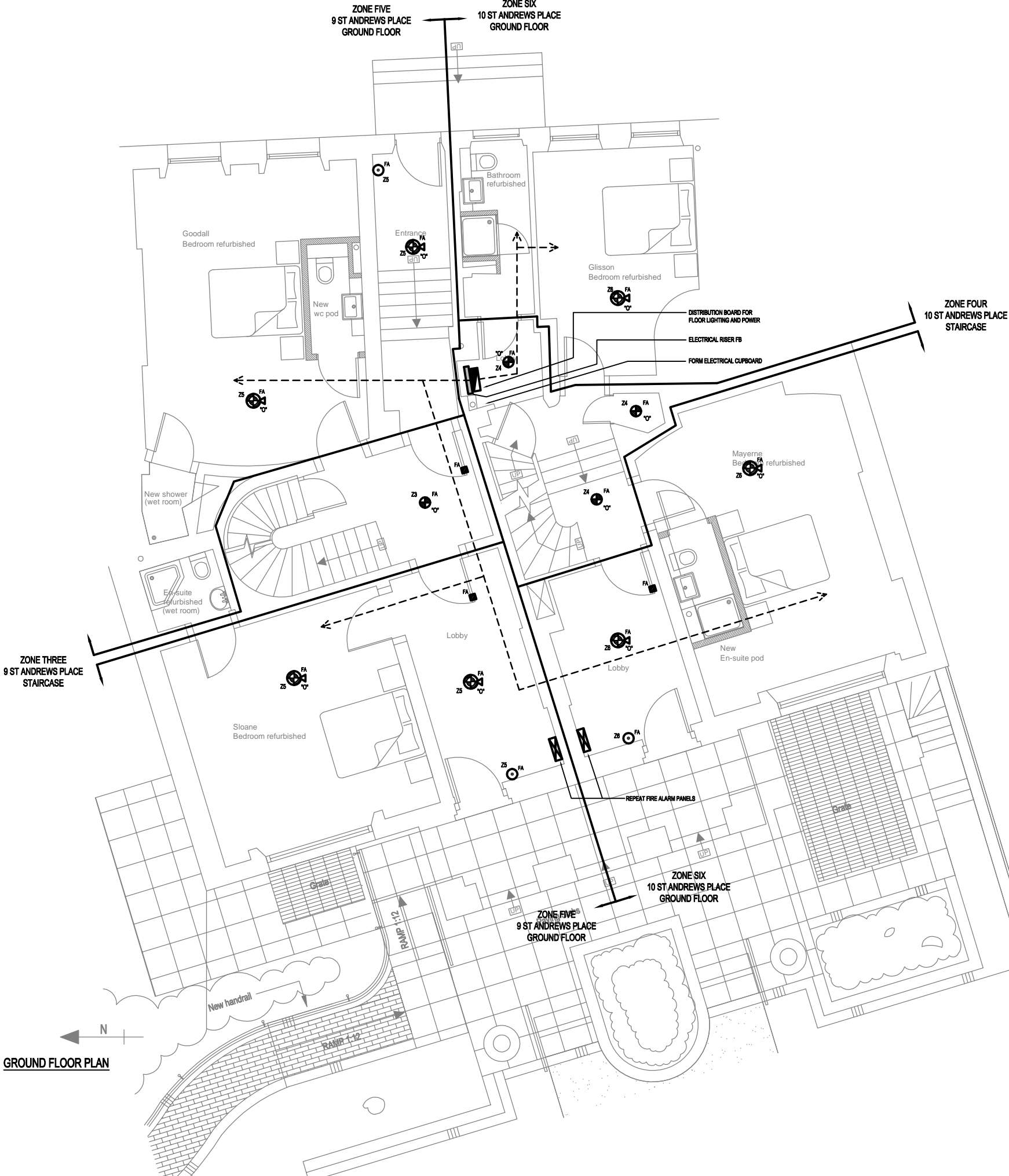
- FA BREAK GLASS POINT
- ⊙ FA SMOKE DETECTOR (D = OPTICAL, I = IONISATION)
- ⊙ FA SMOKE DETECTOR WITH SOUNDER AND BEACON BASE
- ⊙ FA HEAT DETECTOR WITH SOUNDER AND BEACON BASE
- ⊙ FA HEAT DETECTOR (FIXED TEMP)
- FA RADIO OPERATED ELECTRICAL DOOR HOLD OPEN DEVICE (TO CLOSE ON OPERATION OF THE FIRE ALARM SYSTEM)
- INDICATES CABLE ROUTES FOR LIGHTING, POWER, FIRE ALAR DATA AND TV
- LIGHTING AND FIRE ALARM IN FLOOR ABOVE POWER, DATA AN TV IN FLOOR.

NOTES:

- 9 AND 10 ST ANDREWS PLACE, TO BE PROVIDED WITH NEW FIRE ALARM SYSTEM TO L1 CATEGORY OF COVERAGE IN ACCORDANCE WITH BRITISH STANDARD 5839.
- 9 AND 10 ST ANDREWS PLACE TO BE PROVIDED WITH NEW EMERGENCY LIGHTING TO ALL ESCAPE ROUTES, COMMON AREAS AND BEDROOM TOILETS/BATH AREAS IN ACCORDANCE WITH BS 5266.
- "YE" ADJACENT GENERAL PURPOSE LUMINAIRE INDICATES LUMINAIRE WITH 3 HOUR NON MAINTAINED SELF CONTAINED EMERGENCY LIGHTING FACILITY
- "EXIT" INDICATES NON MAINTAINED 3 HOUR SELF CONTAINED ILLUMINATED EXIT SIGN.



ELECTRICAL RISER CUPBOARD  
1:20



GROUND FLOOR PLAN



P4	07.06.10	SCALE BAR AND NORTH POINTER ADDED	GK	JB	ADM
P3	23.04.10	FA AND EA GENERAL NOTES ADDED	GK	JB	ADM
P2	10.03.10	ELECTRICAL SWITCHROOM DETAIL ADDED	JB	GK	ADM
P1	08.02.10	INDICATIVE FIRE ALARM SYSTEM ADDED	JB	GK	ADM
REV	DATE	DESCRIPTION	ALT	DO	ORIG
			CHK	CHK	CHK

TGA Consulting Engineers LLP  
Armstrong House,  
Norton Road  
Stevenage  
Hertfordshire, SG1 2LX  
T: 01438 314422  
F: 01438 314433  
E: stevenage@tgace.co.uk

**tga**  
Consulting Engineers LL

Project  
ROYAL COLLEGE OF PHYSICIANS  
9&10 ST ANDREWS PLACE

Title  
ELECTRICAL ENGINEERING SERVICES  
PROPOSED GROUND FLOOR PLAN  
INDICATIVE MAIN CABLE ROUTES AND  
INDICATIVE FIRE ALARM SYSTEM

Architect  
EDGINGTON SPINK-HYNE

Client  
ROYAL COLLEGE OF PHYSICIANS

Drawing Number	Revision	Scale
6870E(60)002	P4	A1 1:50
		A3 N.T.S.
		A4 N.T.S.

Path  
J:\6870\ELEC\

Architects Drawing Reference  
4850-1201 Rev C

Drawn	DO Check	Originator	Approved
JB	GK	ADM	ADM

Date	Status
2010 JAN	