

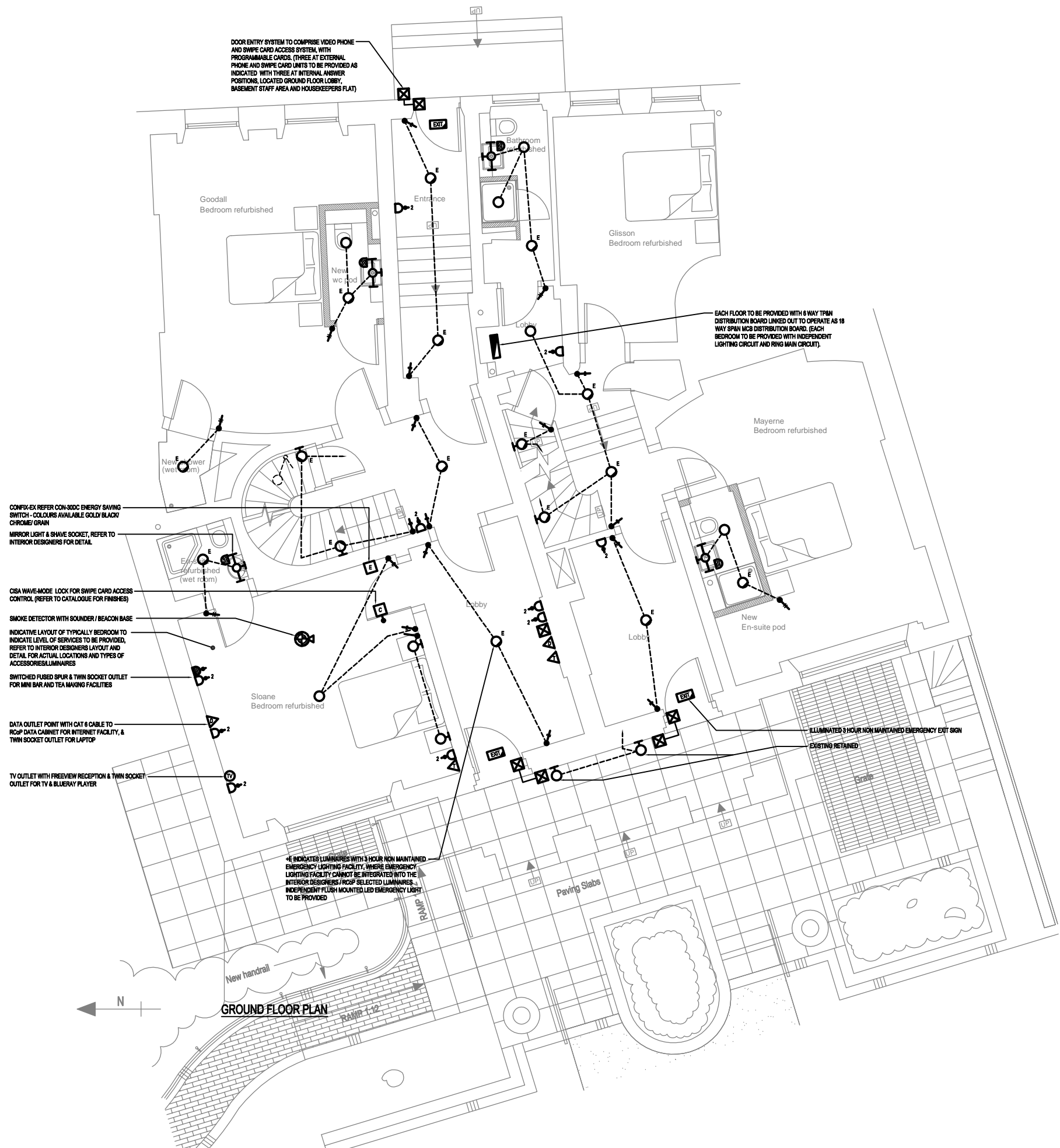
NOTES:

9 AND 10 ST ANDREWS PLACE, TO BE PROVIDED WITH NEW FIRE ALARM SYSTEM TO L1 CATEGORY OF COVERAGE IN ACCORDANCE WITH BRITISH STANDARD 5839.

9 AND 10 ST ANDREWS PLACE TO BE PROVIDED WITH NEW EMERGENCY LIGHTING TO ALL ESCAPE ROUTES, COMMON AREAS AND BEDROOM TOILETS/BATH AREAS IN ACCORDANCE WITH BS 5266.

E ADJACENT GENERAL PURPOSE LUMINAIRE INDICATES LUMINAIRE WITH 3 HOUR NON MAINTAINED SELF CONTAINED EMERGENCY LIGHTING FACILITY

EXIT INDICATES NON MAINTAINED 3 HOUR SELF CONTAINED ILLUMINATED EXIT SIGN.



P2	07.05.10	SCALE BAR AND NORTH POINTER ADDED	OK	JB	ADM
P1	23.04.10	FA AND EL GENERAL NOTES ADDED	OK	JB	ADM
REV	DATE	DESCRIPTION	ALT	DO	ORIG
			CHK	CHK	CHK

TGA Consulting Engineers LLP
Armstrong House,
Norton Road
Stevenage
Hertfordshire, SG1 2LX
T: 01438 314422
F: 01438 314433
E: stevenage@tgace.co.uk



Project
ROYAL COLLEGE OF PHYSICIANS
9&10 ST ANDREWS PLACE

Title
ELECTRICAL ENGINEERING SERVICES
PROPOSED GROUND FLOOR PLAN
INDICATIVE LIGHTING & POWER

Architect
EDGINGTON SPINK-HYNE

Client
ROYAL COLLEGE OF PHYSICIANS

Drawing Number	Revision	Scale	
		A1	1:50
6870E(60)007	P2	A3	N.T.S.
		A4	N.T.S.

Path
J:\6870E(60)007

Architects Drawing Reference
4850-1201 Rev C

Drawn	DO Check	Originator	Approved
Date	Status		
2010 JAN			

This drawing is the copyright of TGA Consulting Engineers LLP and must not be reproduced without their permission.