

SECTION B-B LOCATION PLAN
(SCALE 1:200)

NOTE
THIS DRAWING SHALL BE READ IN CONJUNCTION WITH DRG No. 6870M(PL)401.

REV	DATE	DESCRIPTION	ALT	DO	ORIG	APP
			CHK	CHK	CHK	

TGA Consulting Engineers LLP
Armstrong House,
Norton Road
Stevenage
Hertfordshire, SG1 2LX
T: 01438 314422
F: 01438 314433
E: stevenage@tgace.co.uk



Project
ROYAL COLLEGE OF PHYSICIANS
9&10 ST ANDREWS PLACE

Title
MECHANICAL ENGINEERING SERVICES
SECTION DETAILS
SECTION B-B

Architect
EDGINGTON SPINK-HYNE

Client
ROYAL COLLEGE OF PHYSICIANS

Drawing Number	Revision	Scale	
		A1	1:50
		A3	N.T.S.
		A4	N.T.S.

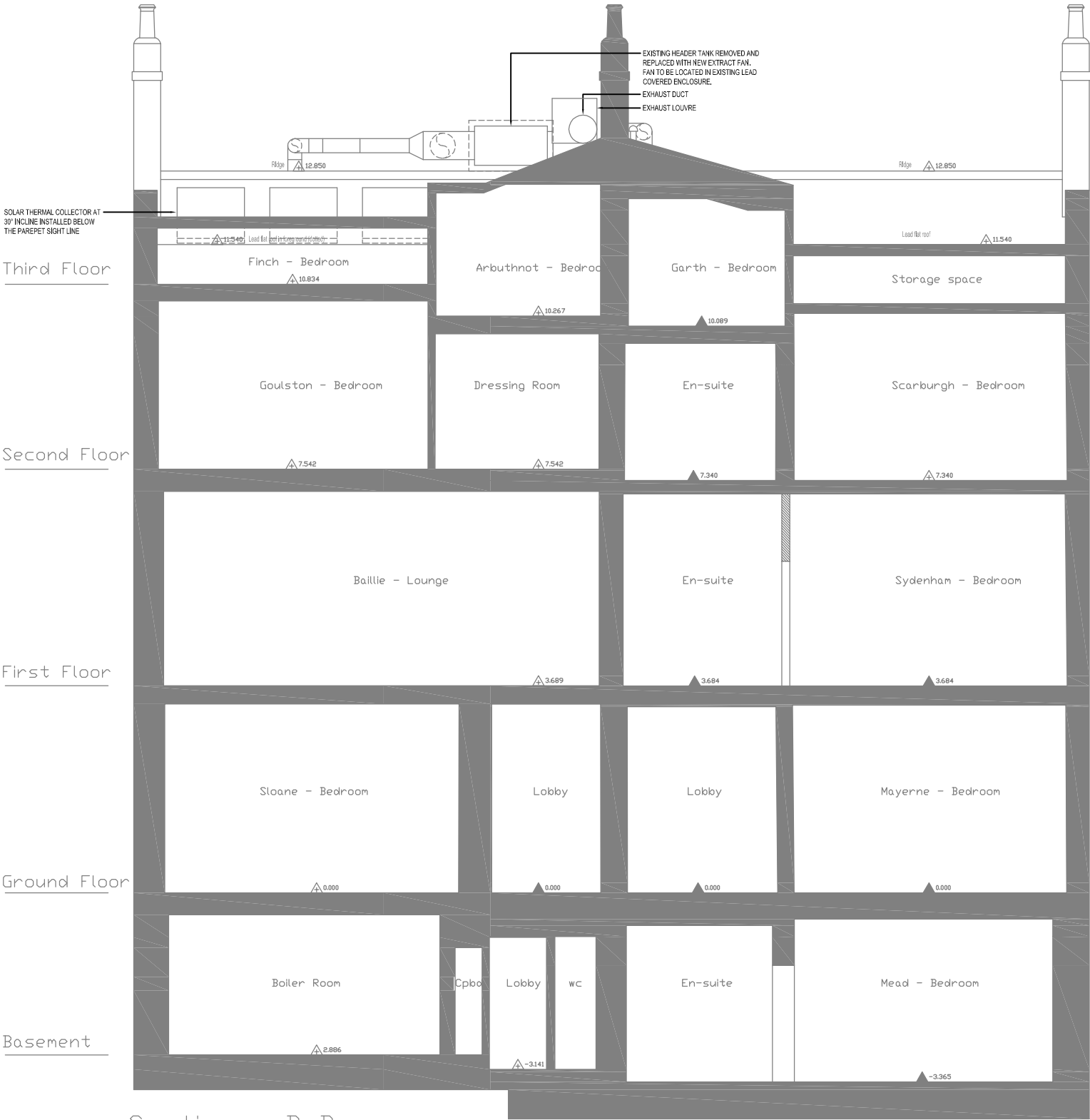
Path
J:\6870\MECH\

Architects Drawing Reference
-

Drawn	DO Check	Originator	Approved
JG	GK	CH	CH

Date	Status
JANUARY 2010	

This drawing is the copyright of TGA Consulting Engineers LLP and must not be reproduced without their permission.



Section - B B

