

John
Robertson
Architects

Holbrook House

8 - 18 Great Queen Street, London WC2

Public Art:

Design and Access Statement



May 2010

Contents

- 1.0 Introduction
- 2.0 The Artist
- 3.0 The Proposed Artwork
 - 3.1 Concept
 - 3.2 Scale and Placement
 - 3.3 Composition and Material
- 4.0 Landscaping
- 5.0 Access Statement
- 6.0 Maintenance and other matters

1.0 Introduction

On 30 October 2009, Henderson Global Investors ('the Applicant') gained permission to vary details pursuant to Condition 5 (Public Art) of planning permission 2006/3315/P to enable the delivery of an alternative public art installation on the Great Queen Street forecourt of newly refurbished building (2009/4214/P).

The aspiration continues to be for the project to create a modern, attractive addition to the Great Queen Street streetscape and a commitment to providing public art.

The public art element of the work was varied in application ref. 2009/4214/P, from an art work by the sculptor Richard Aumonier to an alternative art work by David Worthington. In conjunction with David Worthington, Henderson Global Investors now wish to gain consent for a development of the work consented under 2009/4214/P, to a family of forms that create a space within the street.

This Design and Access Statement should be read in conjunction with the following drawings:

1590/SK11/010/C2

1590/SK11/011/C6

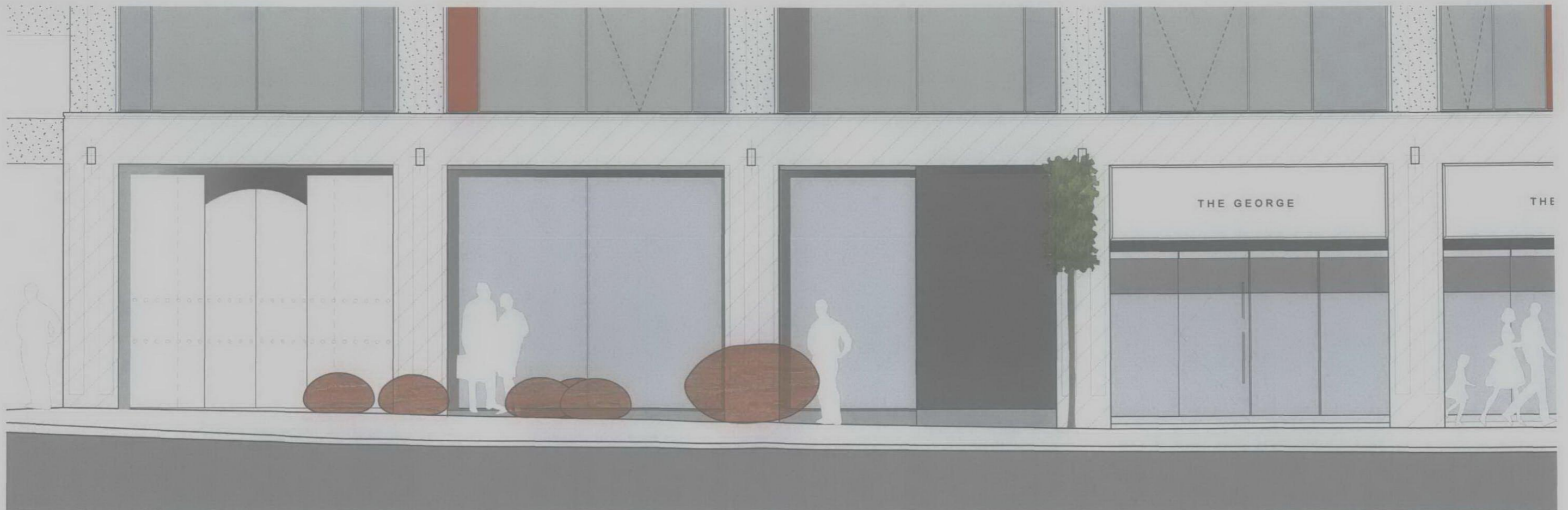


Image of scheme with proposed artwork

2.0 The Artist

David Worthington is a sculptor who has been working principally in the medium of stone. After training in Barcelona and New York, in 1995 he returned to London. In 2008 he moved with his family to Bridport in Dorset where he maintains a studio practice, carrying out public and private commissions as well as exhibitions. "I remain committed to object-making, because I believe each generation must redefine itself through its own creations, including objects. And I am committed to sculpture as I see it as a reflection of our own bodies in space. In a sense all we are is ground up stone dust with water added, metamorphosed by the *élan vital*, the breath of life. That is why I see a continuing relevance and fascination for stone as we respond to it on a primal level."

For several years he has been making wax drawings over a water colour base, images that frustrate the viewers ability to see them clearly. He has been developing mobile stone sculptures. Balanced on bearings these can be manually rotated. They encourage interactivity, and have an amazing response from the public who seem to delight in playing and climbing on them. Increasingly he is interested in the relationship between design and sculpture. Along with many of his generation Science Fiction has become a source for many ideas. For Worthington, sculpture is about the body, and if the audiences' bodies can also be part of the process, so much the better.



Ascending Spiral 2002



Seat Sculpture 2009



Yo Reina 2001



Cap 2005

2.0 The Artist continued

DAVID WORTHINGTON
[b. London 1962]

Education & Professional Experience

1981 Art Students League, New York
1981 Worked at PS1 Studios, Queens, New York
Assisted Mike Heizer on photomontage for pyramid project
1981-84 BA Philosophy and Theology, LMH Oxford University
1987 Foundation Byam Shaw School of Art London
Worked in studio of Tim Scott, London
1989-90 Massana School of Art, Barcelona
1990-1992 Fine Art, Barcelona University
1992 New York Studio School, New York
1993-1995 Resident at Llorens Artigas Foundation, Gallifa, Barcelona
1996 Elected Associate Member of Royal Society of British Sculptors
1997-1999 Carved stone pieces for Anish Kapoor
2000 MA Visual Culture, Middlesex University
2002 Visiting Lecturer Pratt School of Art, New York
2004 Elected Trustee Royal British Society of Sculptors
2005 eta [empowering the artist] courses Contracts and Copyright
Chair and speaker on Contracts and Copyright at Royal British Society of Sculptors Continuing Professional Development Seminars
2005/6 MA Computer Arts Thames Valley University
2007 Elected Fellow of the Royal British Society of Sculptors
2009 Elected Vice President Royal British Society of Sculptors
Shortlisted Jerwood Sculpture Prize
Curates Sculpture at Woburn Abbey with Sladmore Gallery

Solo Exhibitions

1999 Lefevre Contemporary Art, London
2001 Invited Sculptor Glyndebourne Festival 2001
2001/2 Lefevre Contemporary Art London

Mixed Exhibitions

1994 Artists Plates, Llorens Artigas Foundation, Gallifa, Barcelona
1996 Rory Carnegie and David Worthington at The Poster Studio, London
1996 Three Sculptors from Royal Society of British Sculptors at the London School of Business
1997 The Lefevre Gallery, London, 'Contemporary British Art'
The Traveling Show, Odintune Place, Lewes, Sussex
1998 British Council, Kobe, Japan, public art project
1999 The Lefevre Gallery, London 'Post War & Contemporary Art'
2000 Art London, Lefevre Contemporary Art
Tommy's Campaign 2000 The Atlantis gallery, London
2001 The Lefevre Gallery, London 'Contemporary Art'
Art 2001, Lefevre Contemporary Art
2002 Art 2002, Lefevre Contemporary Art
The Courts, National Trust Garden, Trowbridge, Wilts.
Basel Miami Beach, Crane Kalman Gallery
2003 Art 2003 London Crane Kalman Gallery
Tate Modern, Live Culture, performance with Guillermo Gomez Pena
Sculpture at Good wood, Sussex, UK
Against The Trend, Crane Kalman Gallery
2004 On Form, Asthall House, Oxfordshire
Sculpture at Goodwood, Sussex.
2005 Fresh Air, Quennington Sculpture Trust
Leicester University, Royal British Society of Sculptors Centenary Exhibition

2006 Sculpture at Goodwood
20/21 Art Fair RCA Crane Kalman London
20th C Modern Crane Kalman London
Art 2006 Crane Kalman
Nicholas Jones Crane Kalman
8 at 108 Royal British Society of Sculptors
Sculptors at St Johns Ladbroke Grove
On Form 06 Asthall House Oxon
Art London Fine Art Society London
Crane Kalman 20/20 Art Fair Royal College of Art London
20/21 RCA Crane Kalman
2007 Dubai Art Fair Crane Kalman
Monochrome, Fine Art Society London
Thames Valley University MA degree show
Spectrum, Abbey House Gardens, Malmesbury
20/21 RCA Crane Kalman
2008 Art2008 Islington Crane Kalman & Fine Art Society
Montesque Square Sladmore Gallery
On Form 08 Asthall House Oxon.
Hannah Pescha Sculpture Garden
20/21 Crane Kalman Royal College of Art
Newby Hall Sculpture show
2009 Jerwood Sculpture Prize Shortlisted artists
Dubai Art Fair Sladmore Gallery
Art20009 London Crane Kalman Gallery & Fine Art Society
2 1/2 D Royal British Society of Sculptors
18 @ 108 Kinetic Sculpture Royal British Society of Sculptors
Stone Paper Scissors Walford Mill Crafts
Sladmore Gallery Woburn Abbey

Collections

Public Commissions:
Kobe, Japan.
Delancey PLC, 41 Portman Sq, London
Work Space Group, Quality Court, Chancery Lane, London

2009 Trademark Property Fort Worth Texas USA
2009 Rokeby Southern Thornhill Southampton

3.0 The Proposed Artwork

