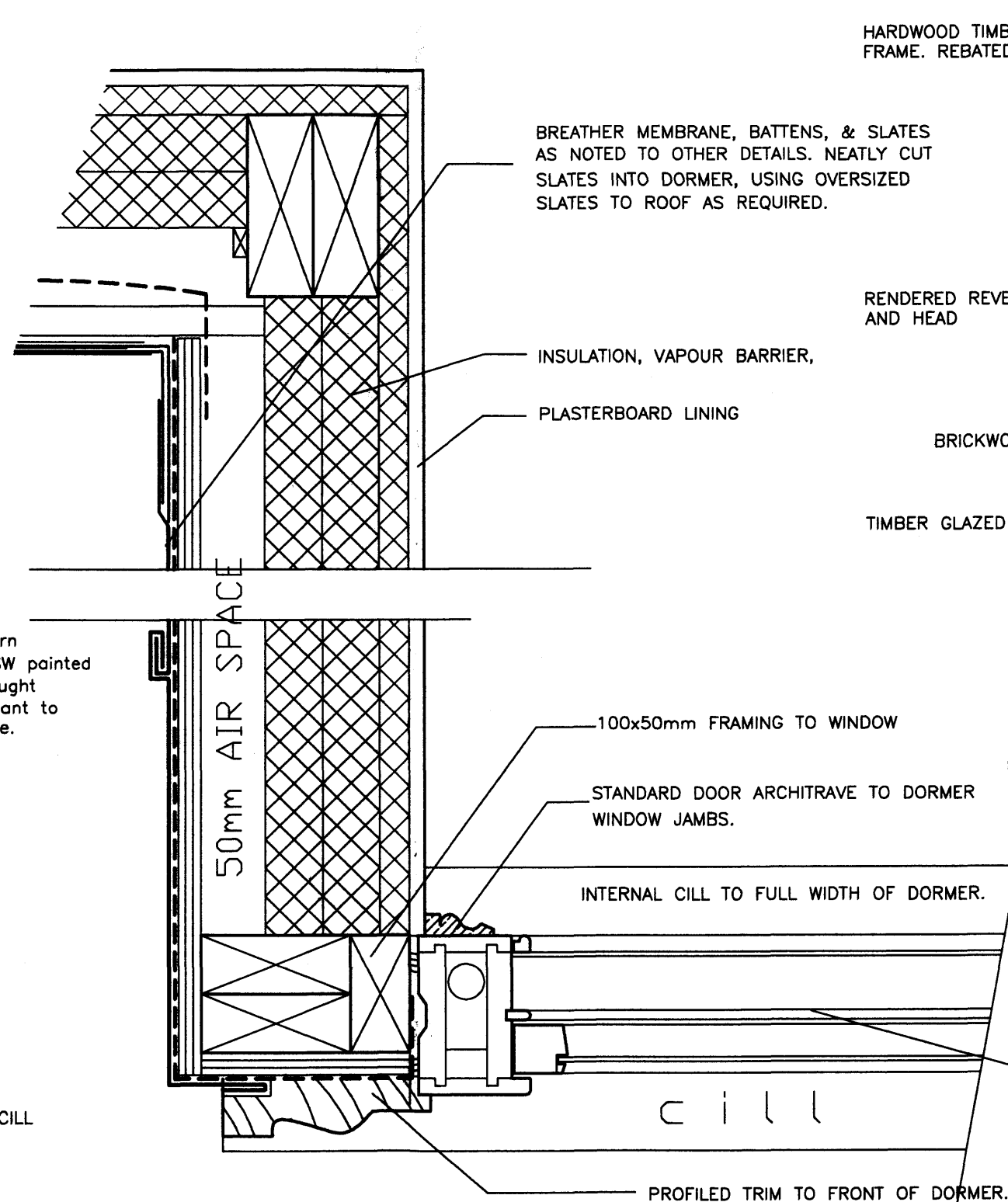
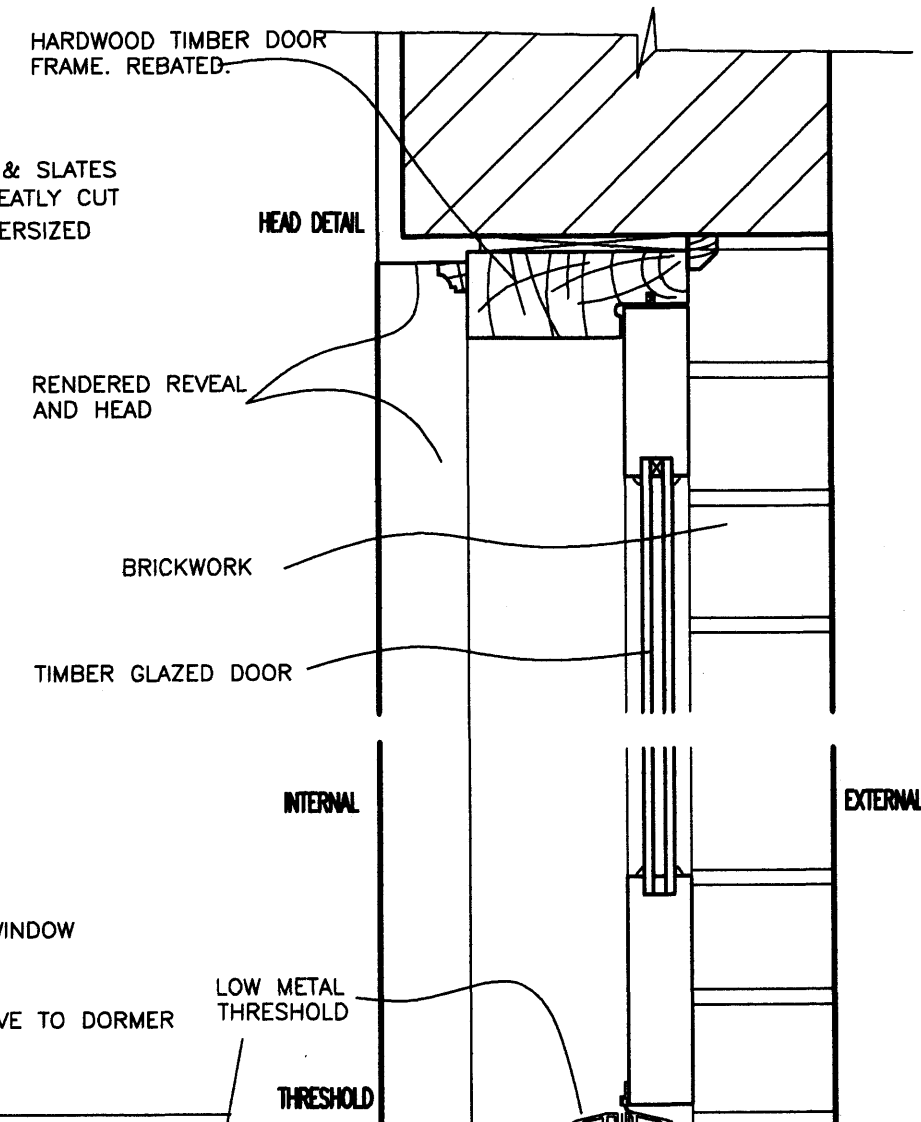


TYPICAL SECTION THROUGH WINDOW



TYPICAL JAMB DETAIL OF DORMER



TYPICAL SECTION THROUGH DOOR

Proprietary heritage pattern sash window in treated SW painted white. To include full draught stripping. Install with sealant to all edges inside & outside. U VALUE TO BE 0.18

DO NOT SCALE FROM DRAWING. USE FIGURED DIMENSIONS ONLY. WHERE APPLICABLE, CHECK DIMENSIONS ON SITE PRIOR TO COMMENCEMENT OF WORKS.

**WEIGHTMAN & BULLEN**  
**ARCHITECTS**

tel: 020 7323 9593 fax: 020 7637 0806  
e-mail: wb@wb-london.com

Project 87 AVENUE ROAD  
LONDON NW8 6JD  
DOOR AND WINDOW DETAILS

Dwg. No. 5535/112

Rev. A

Date June 2006  
Scale 1:5  
Drawn  
Checked