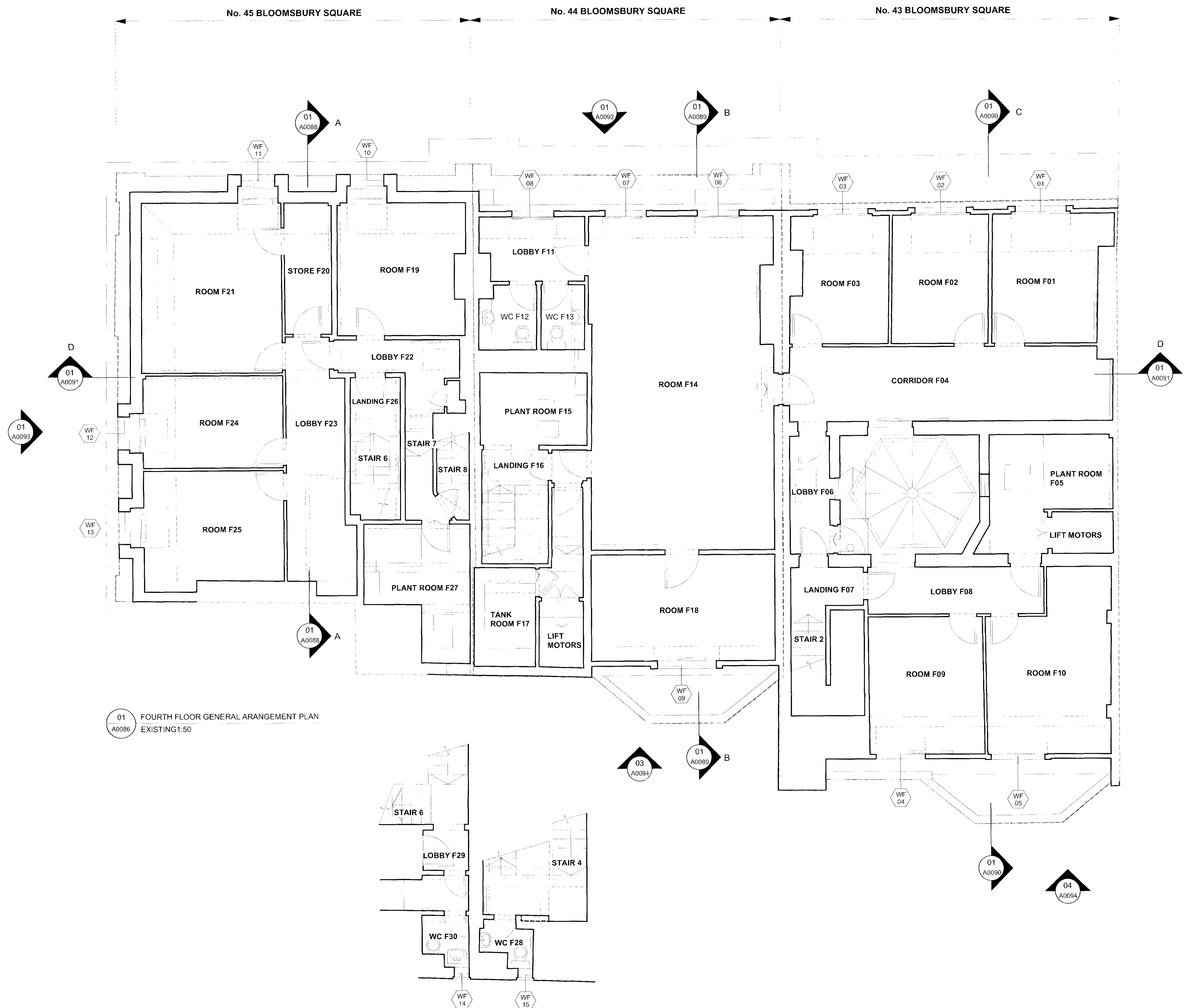
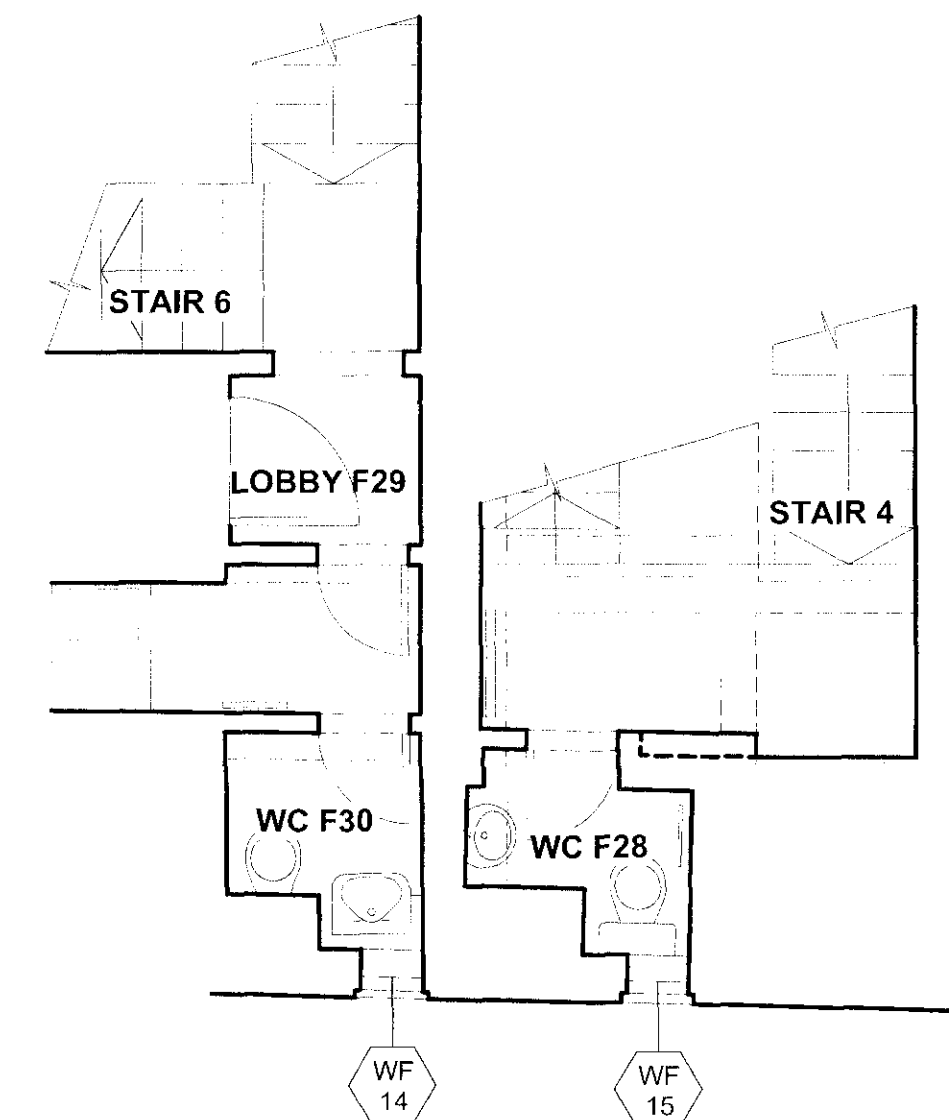


KEY:
 --- Site Boundary

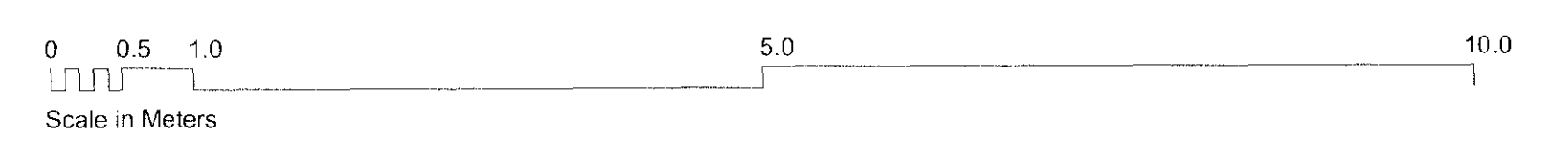
WF 00 Window reference: (Level/No)



01 FOURTH FLOOR GENERAL ARRANGEMENT PLAN
 A0086 EXISTING:1:50



02 INTERMEDIATE LANDINGS AND TOILETS BETWEEN THIRD AND FOURTH FLOOR
 A0086 EXISTING:1:50



Revisions
CANAWAY FLEMING ARCHITECTS
 Canaway Fleming Architects Ltd
 The Dutch House
 307-308 High Holborn
 London WC1V 7JL
 T: 020 7430 2282
 F: 020 7430 2274
 E: info@canawayfleming.com

Client: Holborn Links Limited.
 Project: 43-45 Bloomsbury Square, London.
 Drawing Title: Existing Fourth Floor General Arrangement Plan
 Date: March 2010 Scale: 1:50 @ A0

Project	059	Origin	A	Revision	0086
Drawn	PLANNING	Checked	LH	MC	