

**Photographic Record of the Existing Buildings
43-45 Bloomsbury Square**

Holborn Links Limited
May 2010



Contents


Section	Page
1.0 Basement Photographic Record.	3 - 25
No.43 Bloomsbury Square	3 - 11
No.44 Bloomsbury Square	12 - 18
No.45 Bloomsbury Square	19 - 25
2.0 Ground Floor Photographic Record.	26 - 32
No.43 Bloomsbury Square	26 - 28
No.44 Bloomsbury Square	29 - 30
No.45 Bloomsbury Square	31 - 32
3.0 First Floor Photographic Record.	33 - 36
No.43 Bloomsbury Square	33 - 34
No.45 Bloomsbury Square	35 - 36
4.0 Second Floor Photographic Record.	37 - 51
No.43 Bloomsbury Square	37 - 41
No.44 Bloomsbury Square	42 - 44
No.45 Bloomsbury Square	45 - 51
5.0 Third Floor Photographic Record.	52 - 66
No.43 Bloomsbury Square	52 - 57
No.44 Bloomsbury Square	58 - 61
No.45 Bloomsbury Square	62 - 66
6.0 Fourth Floor Photographic Record.	67 - 82
No.43 Bloomsbury Square	67 - 71
No.44 Bloomsbury Square	72 - 75
No.45 Bloomsbury Square	76 - 82

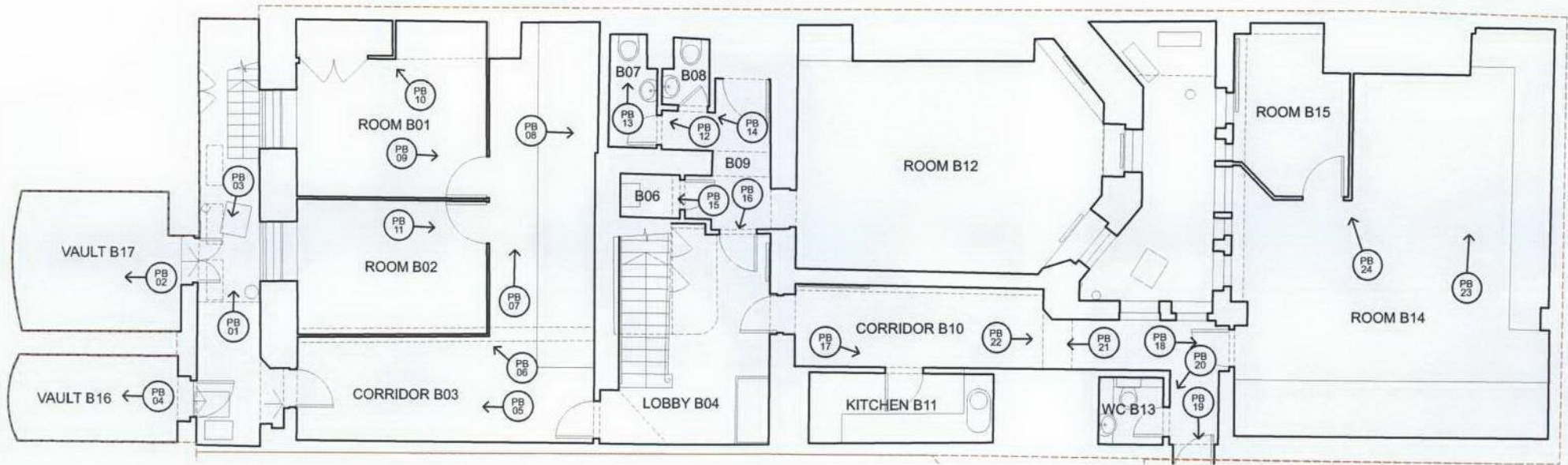
Revisions:

Canaway Fleming Architects Ltd
 Fifth Floor
 The Dutch House
 307-308 High Holborn
 London
 WC1V 7LL

T. 0207 430 2262
 F. 0207 430 2274
 E. mailbox@canawayfleming.com
 www.canawayfleming.com

1.0. Basement - No.43 Bloomsbury Square

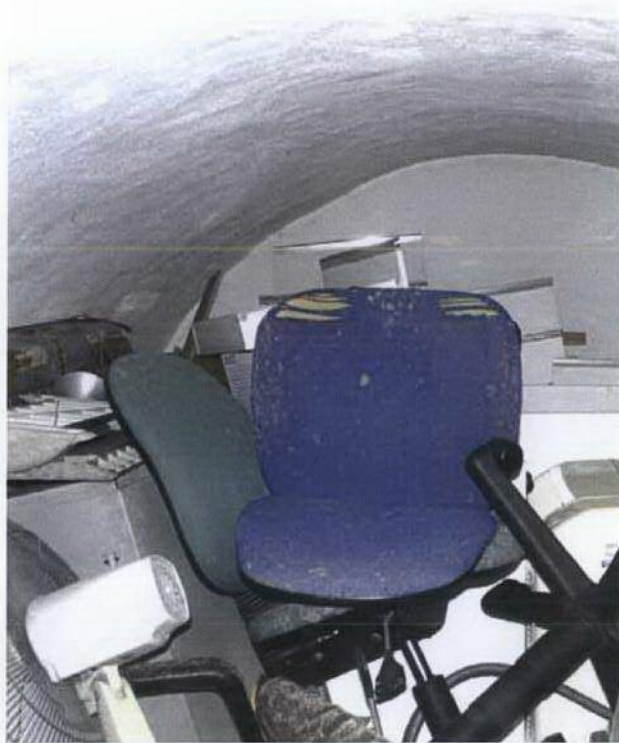
 Denotes photograph reference number and direction of view.



1.0. Basement - No.43 Bloomsbury Square



PB01



PB02



PB03

1.0. Basement - No.43 Bloomsbury Square



PB04



PB05

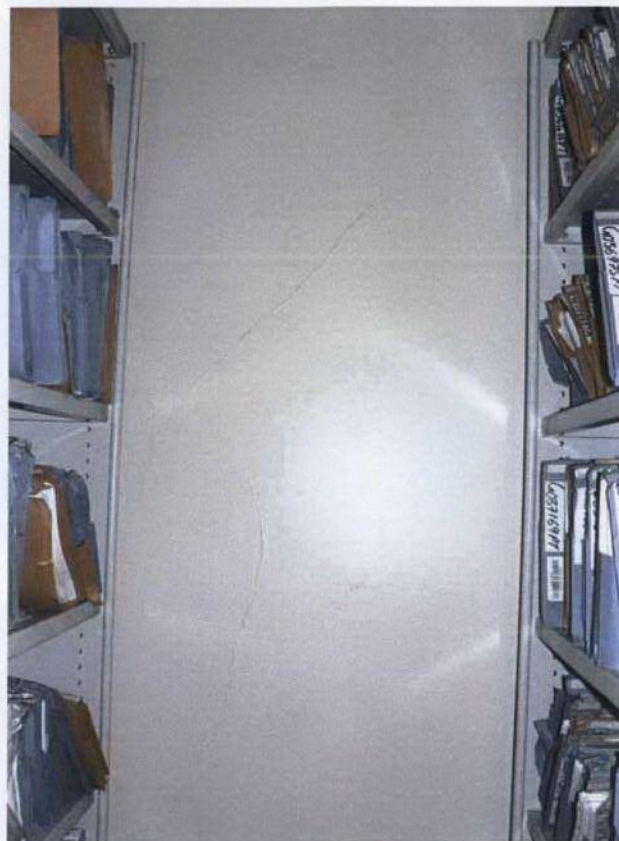


PB06

1.0. Basement - No.43 Bloomsbury Square



PB07



PB08



PB09

1.0. Basement - No.43 Bloomsbury Square



PB10



PB11



PB12

1.0. Basement - No.43 Bloomsbury Square



PB13



PB14



PB15

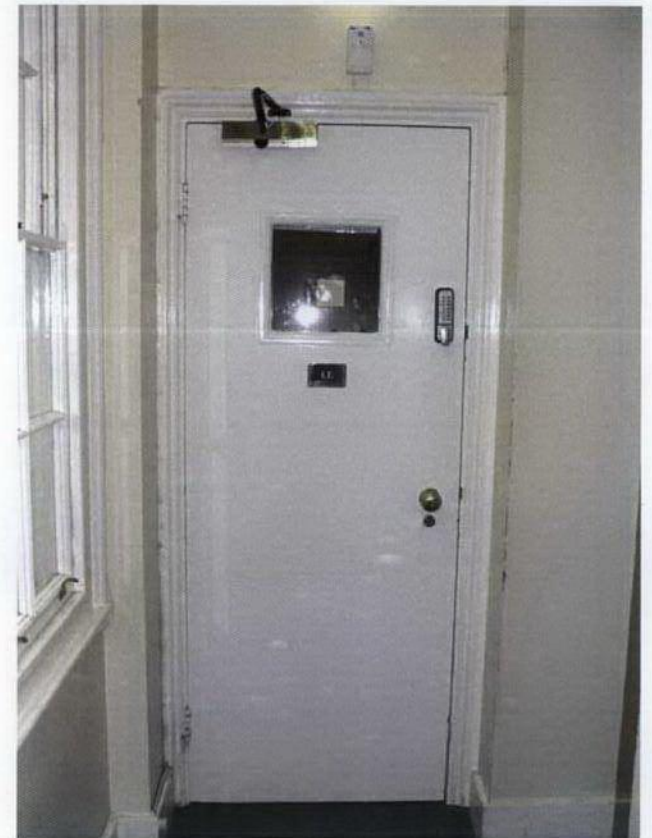
1.0. Basement - No.43 Bloomsbury Square



PB16



PB17



PB18

1.0. Basement - No.43 Bloomsbury Square



PB19

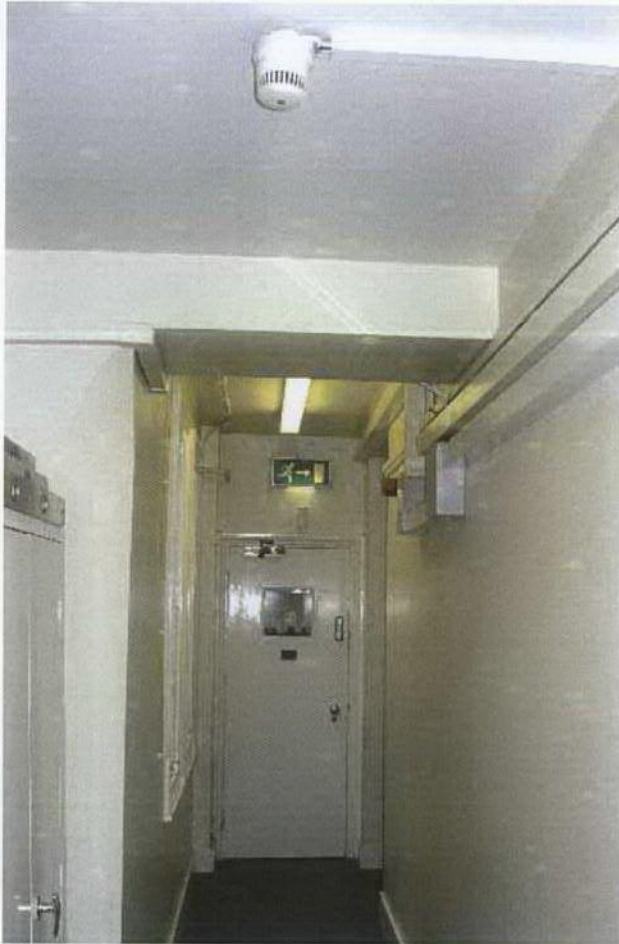


PB20



PB21

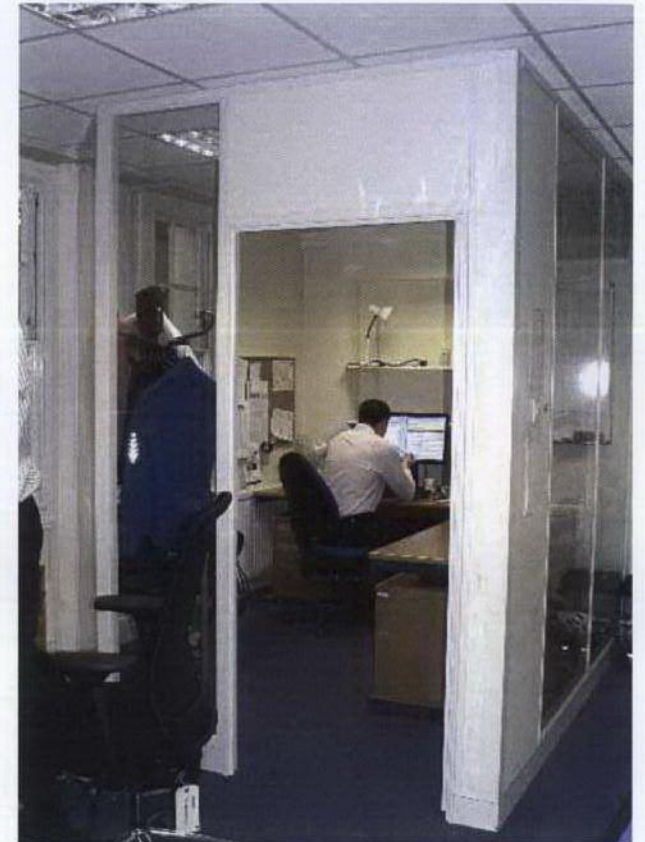
1.0. Basement - No.43 Bloomsbury Square



PB22




PB23



PB24

1.0. Basement - No.44 Bloomsbury Square

 Denotes photograph reference number and direction of view.

