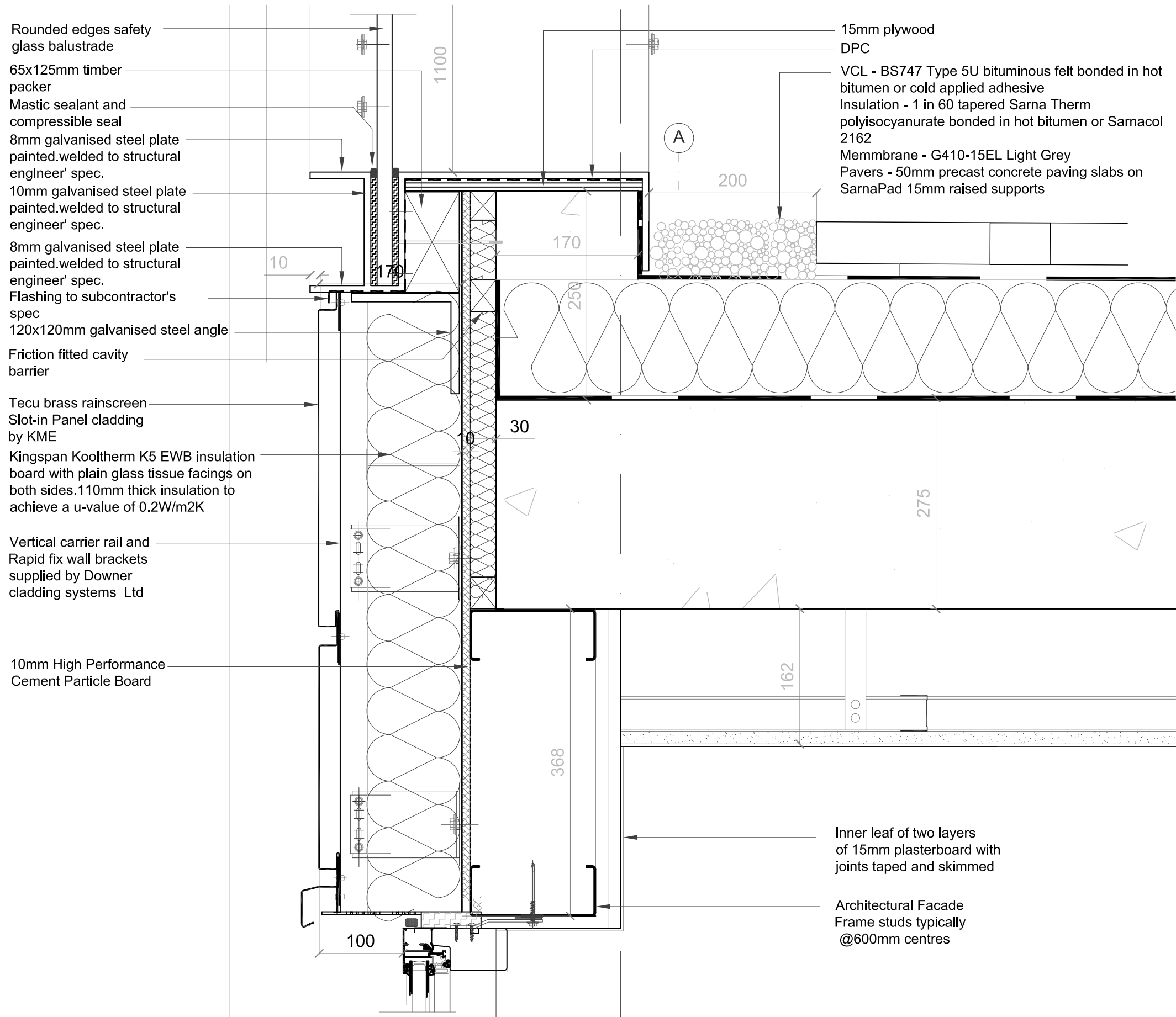


GENERALLY:
DRAWING TO BE READ IN CONJUNCTION WITH ALL RELEVANT FLOOR
PLANS & STRUCTURAL, MECHANICAL & ELECTRICAL
ENGINEERS DETAILS.

ALL DIMENSIONS TO BE CHECKED ON SITE BEFORE COMMENCEMENT OF
WORKS. ALL DIMENSIONS SHOWN ARE TO STRUCTURE UNLESS
OTHERWISE NOTED. DO NOT SCALE THIS DRAWING. WORK TO FIGURED
DIMENSIONS ONLY.

ALL CONSTRUCTION TO BE IN COMPLIANCE WITH LOCAL AUTHORITY
BUILDING REGULATIONS & STANDARDS AND THE HEALTH
AND SAFETY PLAN. ADVISE THE PLANNING SUPERVISOR OF
ALL RELEVANT HEALTH & SAFETY MATTERS.

ONLY BUILD FROM DRAWINGS MARKED FOR CONSTRUCTION.
©THE COPYRIGHT OF THIS DRAWING BELONGS TO NEALE & NORDEN
LTD. DO NOT REPRODUCE OR USE THIS DRAWING WITHOUT THE PRIOR
PERMISSION OF NEALE & NORDEN LTD.



- Rounded edges safety glass balustrade
- 65x125mm timber packer
- Mastic sealant and compressible seal
- 8mm galvanised steel plate painted.welded to structural engineer' spec.
- 10mm galvanised steel plate painted.welded to structural engineer' spec.
- 8mm galvanised steel plate painted.welded to structural engineer' spec.
- Flashing to subcontractor's spec
- 120x120mm galvanised steel angle
- Friction fitted cavity barrier
- Tecu brass rainscreen
- Slot-in Panel cladding by KME
- Kingspan Kooltherm K5 EWB insulation board with plain glass tissue facings on both sides.110mm thick insulation to achieve a u-value of 0.2W/m2K
- Vertical carrier rail and Rapid fix wall brackets supplied by Downer cladding systems Ltd
- 10mm High Performance Cement Particle Board

- 15mm plywood
- DPC
- VCL - BS747 Type 5U bituminous felt bonded in hot bitumen or cold applied adhesive
- Insulation - 1 in 60 tapered Sarna Therm polyisocyanurate bonded in hot bitumen or Sarnacol 2162
- Membrane - G410-15EL Light Grey
- Pavers - 50mm precast concrete paving slabs on SarnaPad 15mm raised supports

Inner leaf of two layers of 15mm plasterboard with joints taped and skimmed

Architectural Facade Frame studs typically @600mm centres

Rev D	25-5-10	Window move in by 13mm to increase reveal to 100mm
Rev C	24-6-09	Concrete slab dimension amended
Rev B	10-7-08	Drawing updated
Rev A	3-4-08	Beam dimensions revised and balustrading amended
19-23 WHITE LION STREET LONDON N1 9PD TEL: 020 7843 1500 FAX: 020 7843 1501		
Neale + Norden LIMITED		
job	CAMDEN HIGH STREET	
client	S PATEL	
title	3RD FLOOR TERRACE EXTERNAL WALL DETAILS	
date	scale	drawn
APRIL '08	1:5 @ A3	CM
job no	drawing no	revision
048604	A172	D