

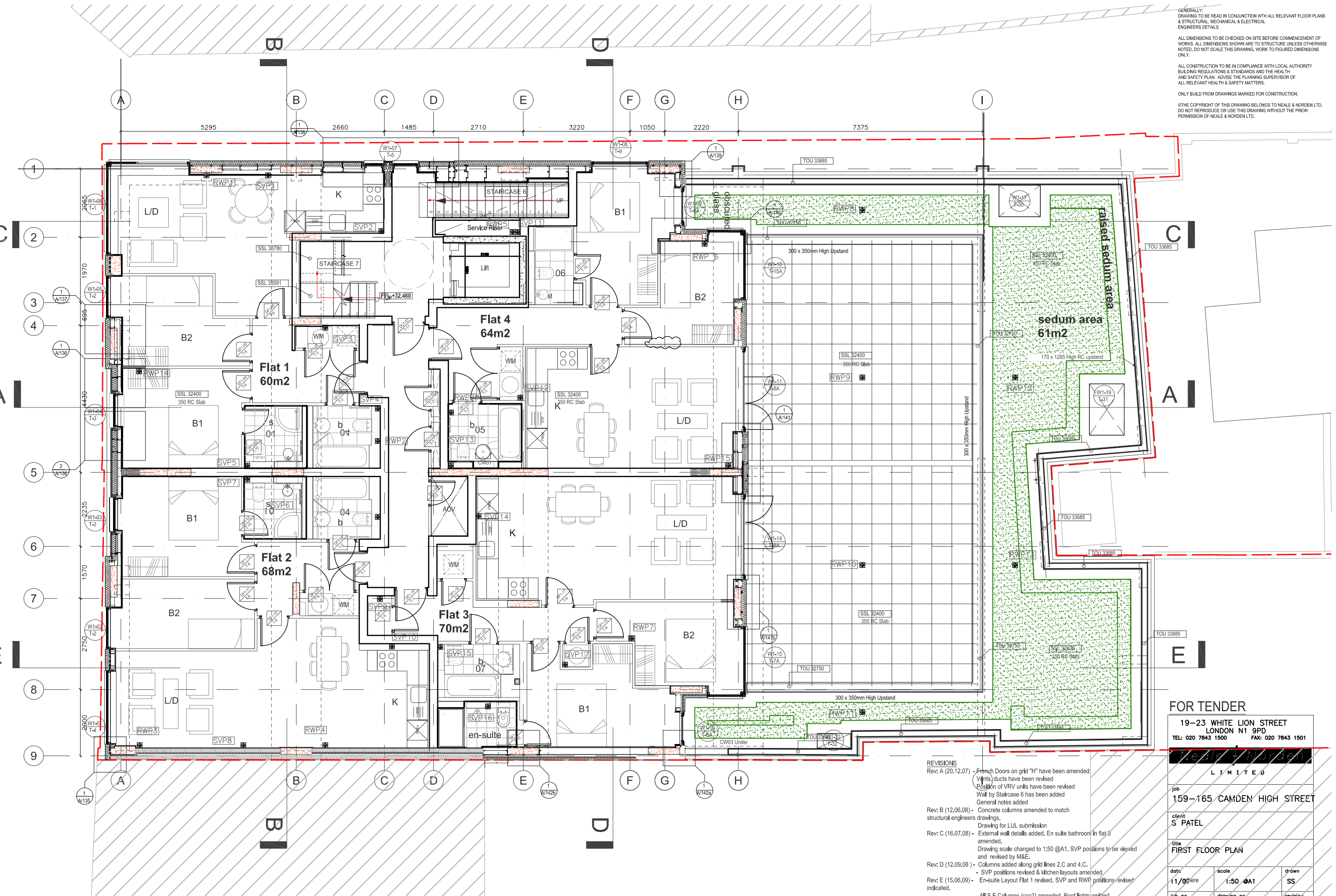
GENERALLY: DRAWING TO BE READ IN CONJUNCTION WITH ALL RELEVANT FLOOR PLANS & STRUCTURAL, MECHANICAL & ELECTRICAL ENGINEERS DETAILS.

ALL DIMENSIONS TO BE CHECKED ON SITE BEFORE COMMENCEMENT OF WORKS. ALL DIMENSIONS SHOWN ARE TO STRUCTURE UNLESS OTHERWISE NOTED. DO NOT SCALE THIS DRAWING. WORK TO FIGURED DIMENSIONS ONLY.

ALL CONSTRUCTION TO BE IN COMPLIANCE WITH LOCAL AUTHORITY BUILDING REGULATIONS & STANDARDS AND THE HEALTH AND SAFETY PLAN. ADVISE THE PLANNING SUPERVISOR OF ALL RELEVANT HEALTH & SAFETY MATTERS.

ONLY BUILD FROM DRAWINGS MARKED FOR CONSTRUCTION.

©THE COPYRIGHT OF THIS DRAWING BELONGS TO NEALE & NORDEN LTD. DO NOT REPRODUCE OR USE THIS DRAWING WITHOUT THE PRIOR PERMISSION OF NEALE & NORDEN LTD.



- REVISIONS
- Rev: A (20.12.07) - French Doors on grid "H" have been amended; Vents ducts have been revised; Position of VRV units have been revised; Wall by Staircase 6 has been added; General notes added
  - Rev: B (12.06.08) - Concrete columns amended to match structural engineers drawings.
  - Rev: C (16.07.08) - External wall details added. En suite bathroom in flat 3 amended. Drawing scale changed to 1:50 @A1. SVP positions to be viewed and revised by M&E.
  - Rev: D (12.09.08) - Columns added along grid lines 2,C and 4,C. SVP positions revised & kitchen layouts amended
  - Rev: E (15.06.09) - En-suite Layout Flat 1 revised, SVP and RWP positions revised indicated. All S.E Columns (cco2) amended. Roof lights omitted
  - Rev: F (22.06.09) - Positions of sanitary fixtures revised., STRUCTURAL LAYOUT REVISED
  - Rev: G (07.05.10) - pattern of sedum amended

**FOR TENDER**

19-23 WHITE LION STREET  
LONDON N1 9PD  
TEL: 020 7843 1500 FAX: 020 7843 1501

**NEALE & NORDEN**  
LIMITED

job  
159-165 CAMDEN HIGH STREET

client  
S PATEL

title  
FIRST FLOOR PLAN

date	scale	drawn
11/07/09	1:50 @A1	SS
job no	drawing no	revision
048604	L 12	G