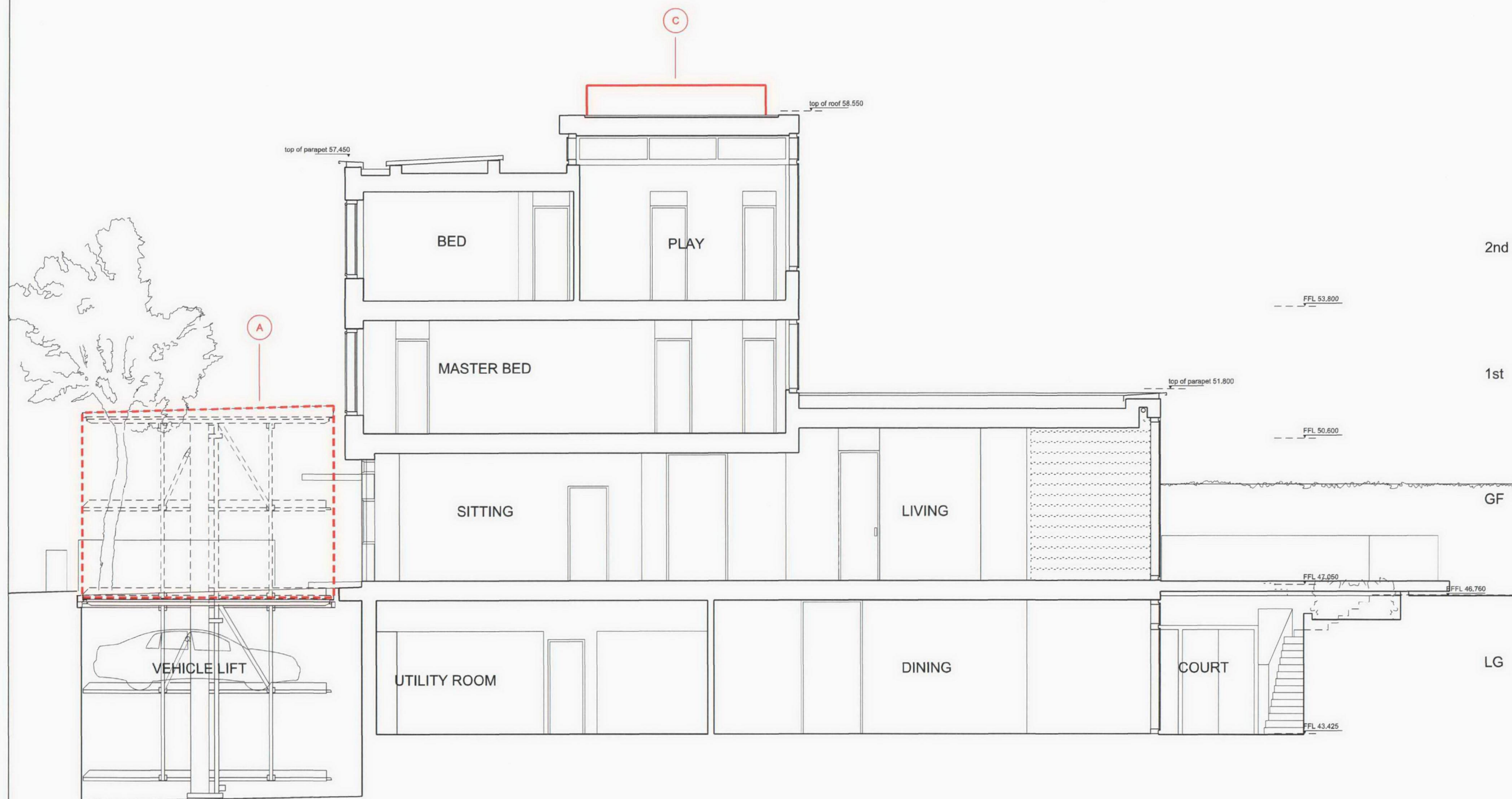


A3

This drawing is to be read in conjunction with all other contract documents and specifications and all other consultants drawings.
All levels and dimensions should be checked on site and any discrepancies notified to the Architect prior to proceeding with works.
THIS DRAWING IS COPYRIGHT. No drawing shall be reproduced in any form without prior written permission of Eric Parry Architects.



Design Amendments

A The double width car lift has been replaced with a double stacker (one above another). The opening in the low boundary wall to pavement can also now be narrowed.

C Introduction of a roof top air source heating and cooling in lieu of the combined ground source and heat rejection units at application. The form of the louvred enclosure is curved so it diminishes in street and garden views and about the same height as the chimneys of the neighbouring villas.

PLANNING

| Rev | Description | Date | By | Client | Scale | Drawn by | Checked by | Rev |
|-----|--|----------|----|--------------------------|----------------|----------|------------|-----|
| P4 | Issue to DP9 | 24.03.10 | | Queen's Grove Residents | 1: 100 | ZF | | |
| P1 | Issued for Planning - Incorporating section of enclosed parking lift car. Location when in operation shown dashed. | 06.06.08 | | 40 Queen's Grove, NW8 | October 2007 | RK | | |
| P2 | Issued for Information with internal layout changes | 10.06.09 | | | | | | |
| P3 | General update - revision clouds added to indicate changes | 10.03.10 | | | | | | |
| | | | | Eric Parry Architects | EPA QGR 03_105 | | | |
| | | | | Proposed Long Section FF | P4 | | | |